

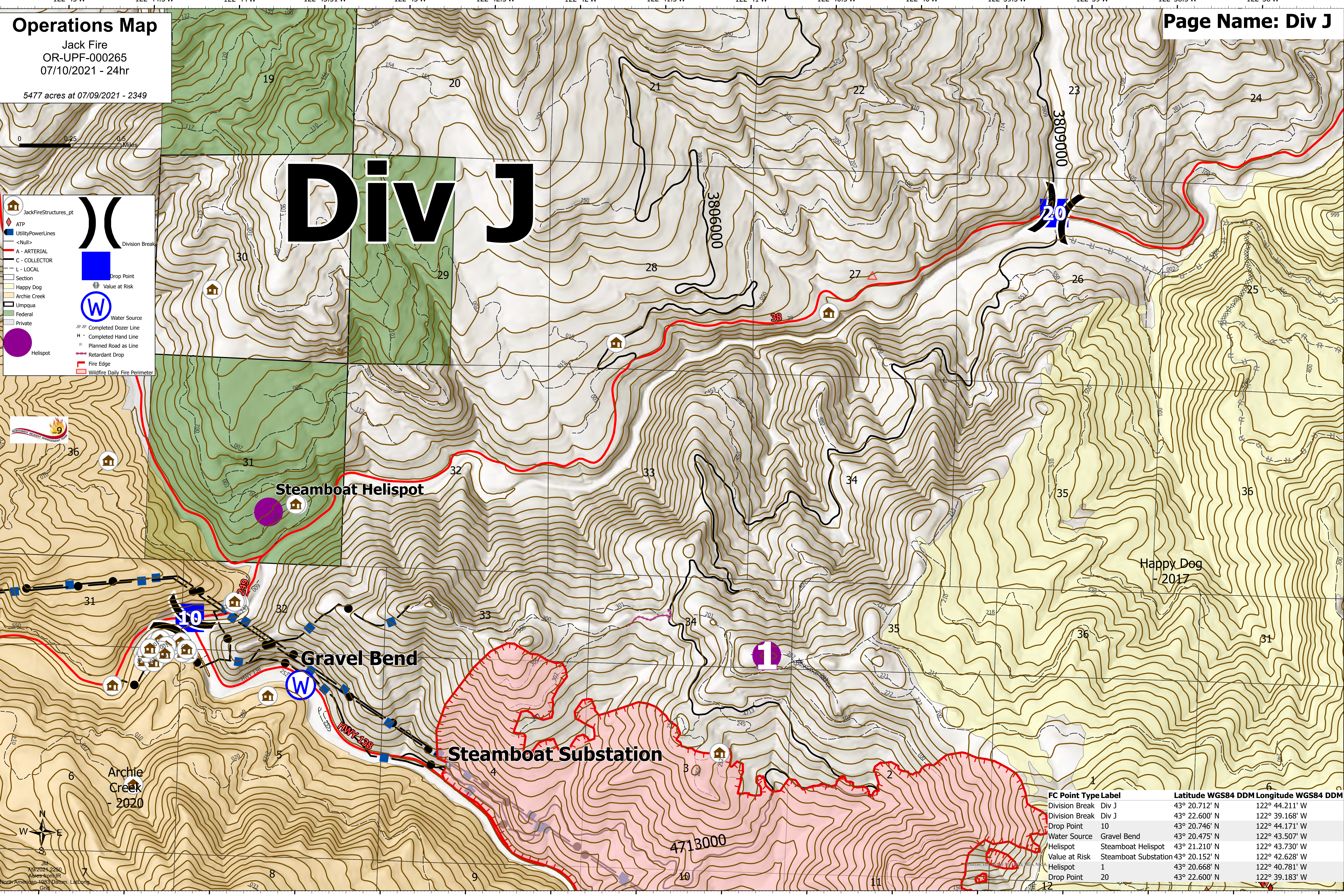
# Operations Map

Jack Fire  
OR-UPF-000265  
07/10/2021 - 24hr

5477 acres at 07/09/2021 - 2349

# Div J

- JackFireStructures\_pt
- ATP
- UtilityPowerLines
- <Null>
- A - ARTERIAL
- C - COLLECTOR
- L - LOCAL
- Section
- Happy Dog
- Archie Creek
- Umpqua
- Federal
- Private
- Helispot
- Division Break
- Drop Point
- Value at Risk
- Water Source
- Completed Dozer Line
- Completed Hand Line
- Planned Road as Line
- Retardant Drop
- Fire Edge
- Wildfire Daily Fire Perimeter



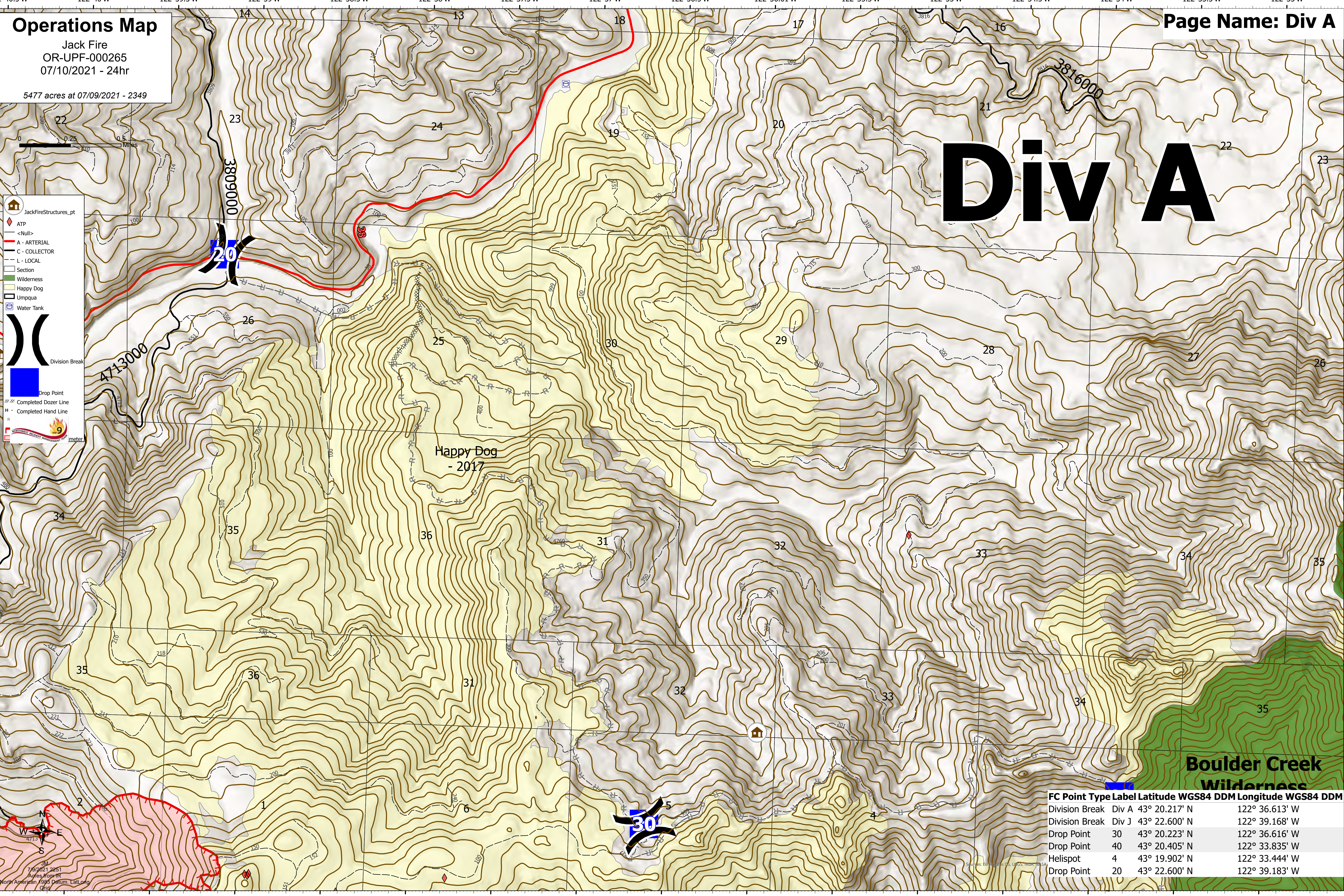
FC Point Type Label	Latitude WGS84 DDM	Longitude WGS84 DDM
Division Break Div J	43° 20.712' N	122° 39.211' W
Division Break Div J	43° 22.600' N	122° 39.168' W
Drop Point 10	43° 20.746' N	122° 44.171' W
Water Source Gravel Bend	43° 20.475' N	122° 43.507' W
Helispot Steamboat Helispot	43° 21.210' N	122° 43.730' W
Value at Risk Steamboat Substation	43° 20.152' N	122° 42.628' W
Helispot 1	43° 20.668' N	122° 40.781' W
Drop Point 20	43° 22.600' N	122° 39.183' W

# Operations Map

Jack Fire  
OR-UPF-000265  
07/10/2021 - 24hr

5477 acres at 07/09/2021 - 2349

# Div A



- JackFireStructures\_pt
- ATP
- <Null>
- A - ARTERIAL
- C - COLLECTOR
- L - LOCAL
- Section
- Wilderness
- Happy Dog
- Umpqua
- Water Tank
- Division Break
- Drop Point
- Completed Dozer Line
- Completed Hand Line



FC Point Type	Label	Latitude WGS84 DDM	Longitude WGS84 DDM
Division Break	Div A	43° 20.217' N	122° 36.613' W
Division Break	Div J	43° 22.600' N	122° 39.168' W
Drop Point	30	43° 20.223' N	122° 36.616' W
Drop Point	40	43° 20.405' N	122° 33.835' W
Helispot	4	43° 19.902' N	122° 33.444' W
Drop Point	20	43° 22.600' N	122° 39.183' W

7/9/2021 2251  
Acres from IR  
North American 1983 Datum, Laitlong  
Grid

# Operations Map

Jack Fire  
OR-UPF-000265  
07/10/2021 - 24hr

5477 acres at 07/09/2021 - 2349



**Legend**

- JackFireStructures\_pt
- ATP
- UtilityPowerLines
- <Null>
- A - ARTERIAL
- C - COLLECTOR
- L - LOCAL
- Section
- Wilderness
- Happy Dog
- Apple
- Umpqua
- Private
- Pump
- Water Tank
- Helispot
- Division Break
- Drop Point
- Value at Risk
- Safety Zone
- Completed Dozer Line
- Completed Hand Line
- Planned Road as Line
- Fire Edge
- Wildfire Daily Fire Perimeter



7/9/2021 2:25:11  
Acres from IR  
North America, 1983 Datum, Lat/Long



# Div Z

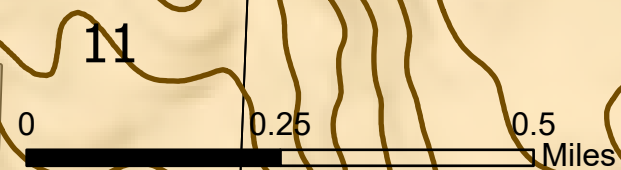
FC Point Type Label	Latitude WGS84 DDM	Longitude WGS84 DDM
Division Break Div M	43° 17.593' N	122° 36.264' W
Division Break Div A	43° 20.217' N	122° 36.613' W
Drop Point 60	43° 17.739' N	122° 36.558' W
Drop Point 30	43° 20.223' N	122° 36.616' W
Drop Point 40	43° 20.405' N	122° 33.835' W
Value at Risk Illahee Flats Substation	43° 17.963' N	122° 34.874' W
Drop Point 62	43° 17.973' N	122° 34.704' W
Helispot 5	43° 17.507' N	122° 35.269' W
Helispot 4	43° 19.902' N	122° 33.444' W
Safety Zone	43° 17.259' N	122° 33.201' W
Safety Zone	43° 17.631' N	122° 34.596' W



# Operations Map

Jack Fire  
OR-UPF-000265  
07/10/2021 - 24hr

5477 acres at 07/09/2021 - 2349



- JackFireStructures\_pt
- UtilityPowerLines
- <Null>
- A - ARTERIAL
- C - COLLECTOR
- L - LOCAL
- Section
- Happy Dog
- Apple
- Archie Creek
- Umpqua
- Federal
- Hot Spot - Spot Fire
- Bridge
- Completed Dozer Line
- Completed Hand Line
- Fire Edge
- Wildfire Daily Fire Perimeter



# Div M

FC Point Type	Label	Latitude WGS84 DDM	Longitude WGS84 DDM
Hot Spot - Spot Fire		43° 17.959' N	122° 40.249' W
Bridge		43° 18.244' N	122° 40.653' W

JM  
7/9/2021 2252  
Address from IR  
North America 1983 Datum Lat/long