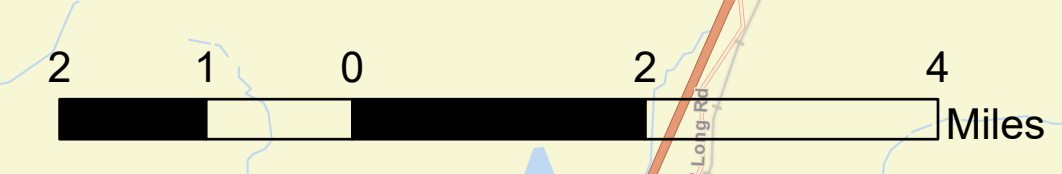


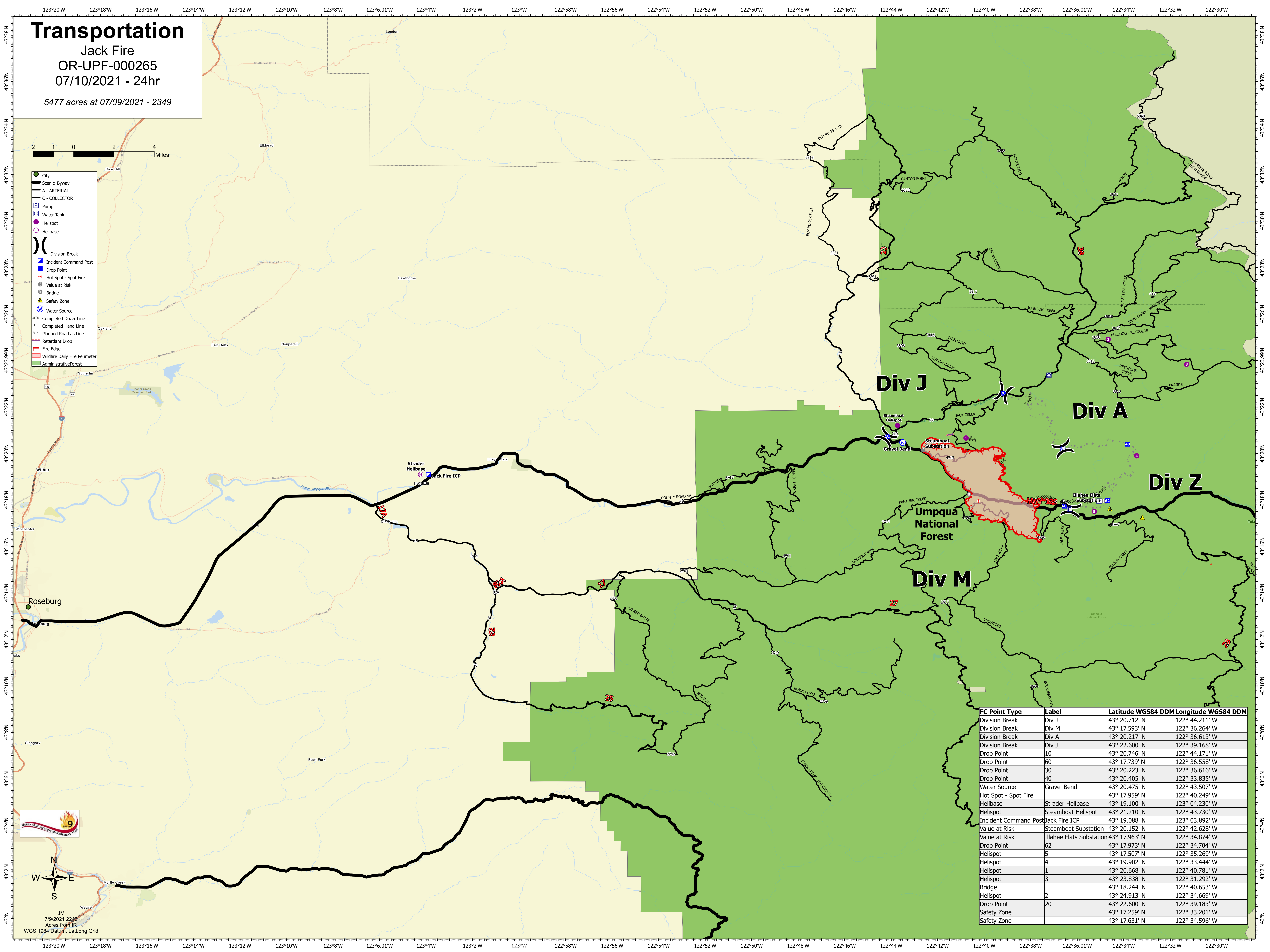
# Transportation

Jack Fire  
OR-UPF-000265  
07/10/2021 - 24hr

5477 acres at 07/09/2021 - 2349



- City
- Scenic Byway
- A - ARTERIAL
- C - COLLECTOR
- Pump
- Water Tank
- Helispot
- Helibase
- Division Break
- Incident Command Post
- Drop Point
- Hot Spot - Spot Fire
- Value at Risk
- Bridge
- Safety Zone
- Water Source
- Completed Dozer Line
- Completed Hand Line
- Planned Road as Line
- Retardant Drop
- Fire Edge
- Wildfire Daily Fire Perimeter
- Administrative Forest



FC Point Type	Label	Latitude WGS84 DDM	Longitude WGS84 DDM
Division Break	Div J	43° 20.712' N	122° 44.211' W
Division Break	Div M	43° 17.593' N	122° 36.264' W
Division Break	Div A	43° 20.217' N	122° 36.613' W
Division Break	Div J	43° 22.600' N	122° 39.168' W
Drop Point	10	43° 20.746' N	122° 44.171' W
Drop Point	60	43° 17.739' N	122° 36.558' W
Drop Point	30	43° 20.223' N	122° 36.616' W
Drop Point	40	43° 20.405' N	122° 33.835' W
Water Source	Gravel Bend	43° 20.475' N	122° 43.507' W
Hot Spot - Spot Fire		43° 17.959' N	122° 40.249' W
Helibase	Strader Helibase	43° 19.100' N	123° 04.230' W
Helispot	Steamboat Helispot	43° 21.210' N	122° 43.730' W
Incident Command Post	Jack Fire ICP	43° 19.088' N	123° 03.892' W
Value at Risk	Steamboat Substation	43° 20.152' N	122° 42.628' W
Value at Risk	Illahee Flats Substation	43° 17.963' N	122° 34.874' W
Drop Point	62	43° 17.973' N	122° 34.704' W
Helispot	5	43° 17.507' N	122° 35.269' W
Helispot	4	43° 19.902' N	122° 33.444' W
Helispot	1	43° 20.668' N	122° 40.781' W
Helispot	3	43° 23.838' N	122° 31.292' W
Bridge	2	43° 18.244' N	122° 40.653' W
Helispot		43° 24.913' N	122° 34.669' W
Drop Point	20	43° 22.600' N	122° 39.183' W
Safety Zone		43° 17.259' N	122° 33.201' W
Safety Zone		43° 17.631' N	122° 34.596' W

JM  
 7/9/2021 22:46  
 Acres from IR  
 WGS 1984 Datum, Lat/Long Grid