


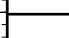


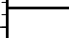

122°28'W 122°27.5'W 122°27'W 122°26.5'W 122°26'W 122°25.5'W 122°25'W 122°24.5'W 122°24'W 122°23.5'W 122°23'W 122°22.5'W

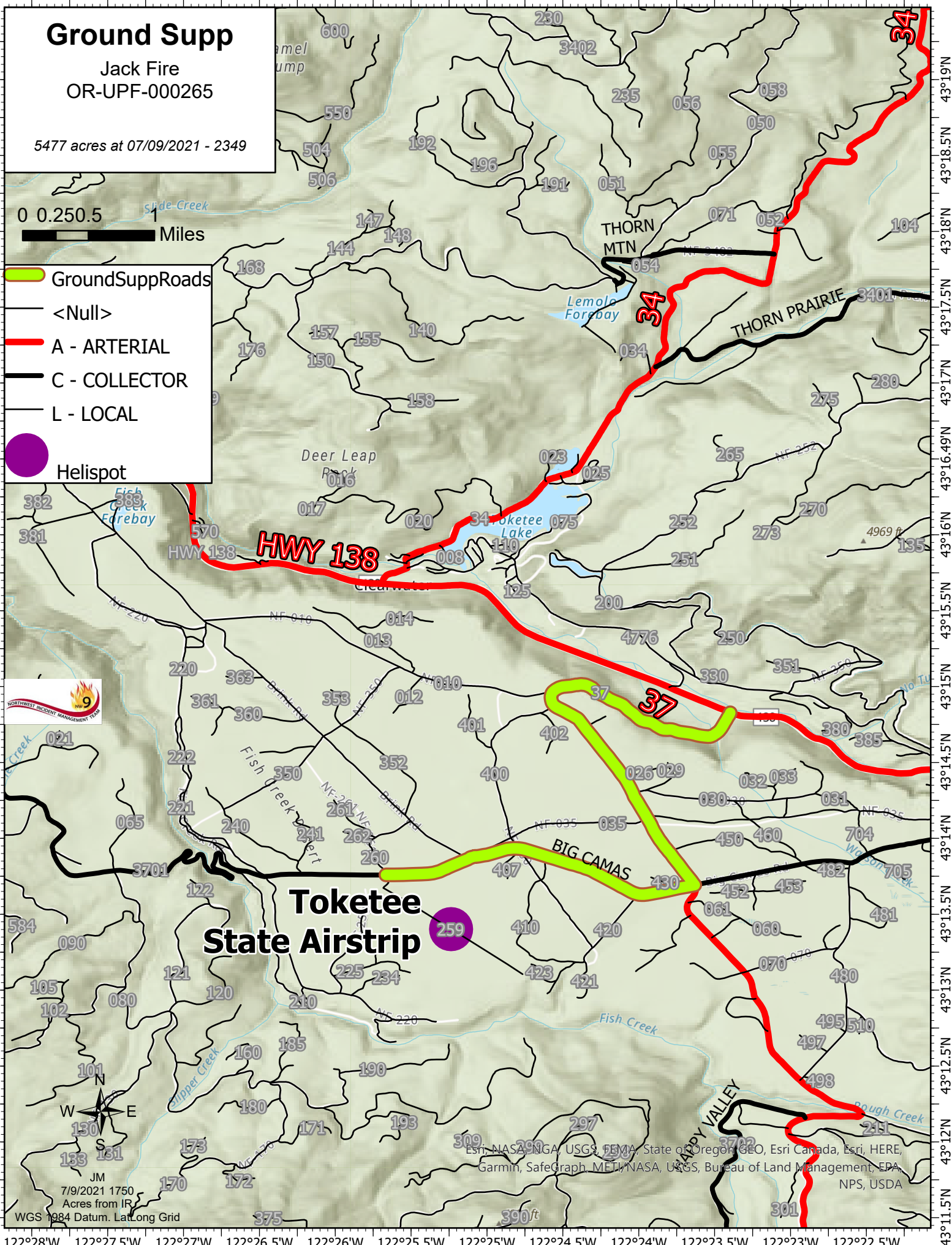
Ground Supp

Jack Fire
OR-UPF-000265

5477 acres at 07/09/2021 - 2349

0 0.250.5 Miles

-  GroundSuppRoads
-  <Null>
-  A - ARTERIAL
-  C - COLLECTOR
-  L - LOCAL
-  Helispot



Toketee State Airstrip



W E
S N
JM
7/9/2021 1750
Acres from IR
WGS 1984 Datum, Lat/Long Grid

Esri, NASA, NGA, USGS, FEMA, State of Oregon, GEO, Esri Canada, Esri, HERE, Garmin, SafeGraph, METI/NASA, USGS, Bureau of Land Management, EPA, NPS, USDA

122°28'W 122°27.5'W 122°27'W 122°26.5'W 122°26'W 122°25.5'W 122°25'W 122°24.5'W 122°24'W 122°23.5'W 122°23'W 122°22.5'W