

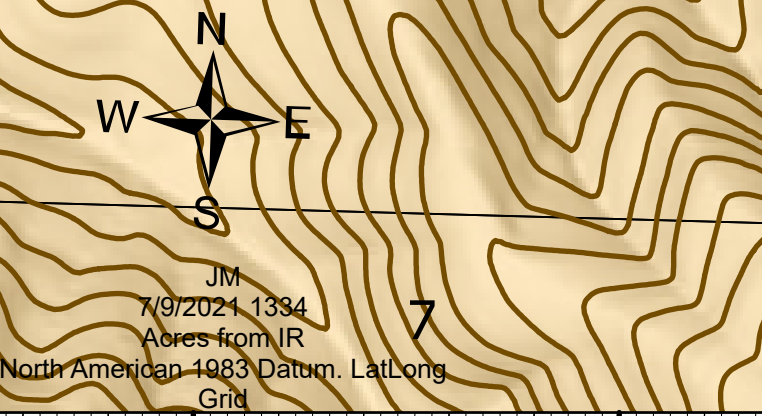
Operations Map

Jack Fire
OR-UPF-000265
07/10/2021 - 24hr

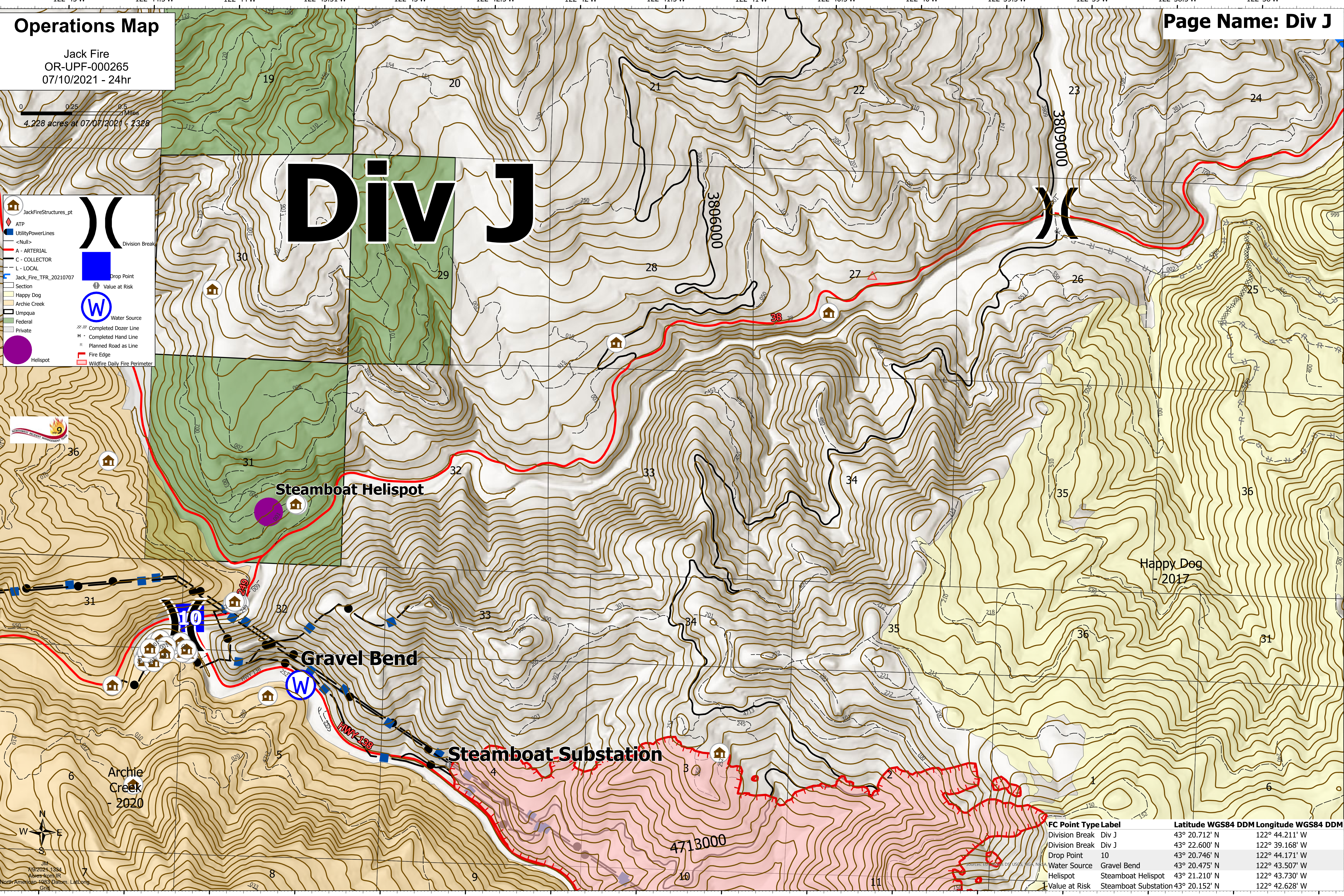
0 0.25 0.5 Miles
4,228 acres at 07/07/2021 - 2328

Div J

- JackFireStructures_pt
- ATP
- UtilityPowerLines
- <Null>
- A - ARTERIAL
- C - COLLECTOR
- L - LOCAL
- Jack_Fire_TFR_20210707
- Section
- Happy Dog
- Archie Creek
- Umpqua
- Federal
- Private
- Helispot
- Division Break
- Drop Point
- Value at Risk
- Water Source
- Completed Dozer Line
- Completed Hand Line
- Planned Road as Line
- Fire Edge
- Wildfire Daily Fire Perimeter



7/9/2021 1334
Acres from IR
North American 4883 Datum LatLong
GMA



FC Point Type Label	Latitude WGS84 DDM	Longitude WGS84 DDM
Division Break Div J	43° 20.712' N	122° 44.211' W
Division Break Div J	43° 22.600' N	122° 39.168' W
Drop Point 10	43° 20.746' N	122° 44.171' W
Water Source Gravel Bend	43° 20.475' N	122° 43.507' W
Helispot Steamboat Helispot	43° 21.210' N	122° 43.730' W
Value at Risk Steamboat Substation	43° 20.152' N	122° 42.628' W

Operations Map

Jack Fire
OR-UPF-000265
07/10/2021 - 24hr

0 0.25 0.5 Miles
4,228 acres at 07/07/2021 2328

JackFireStructures_pt

- ATP
- <Null>
- A - ARTERIAL
- C - COLLECTOR
- L - LOCAL
- Jack_Fire_TFR_20210707
- Section
- Wilderness
- Happy Dog
- Umpqua

Division Break

Drop Point

Completed Dozer Line

Completed Hand Line

Div A

Happy Dog
- 2017

Boulder Creek
Wilderness

40

30

FC Point	Type	Label	Latitude WGS84 DDM	Longitude WGS84 DDM
Division Break	Div A		43° 20.217' N	122° 36.613' W
Division Break	Div J		43° 22.600' N	122° 39.168' W
Drop Point		30	43° 20.223' N	122° 36.616' W
Drop Point		40	43° 20.405' N	122° 33.835' W

North American 1983 Datum, Laitlong Grid

Operations Map

Jack Fire
OR-UPF-000265
07/10/2021 - 24hr

4.228 acres at 07/07/2021 - 2328

- JackFireStructures_pt
- ATP
- UtilityPowerLines
- <Null>
- A - ARTERIAL
- C - COLLECTOR
- L - LOCAL
- Jack_Fire_TFR_20210707
- Section
- Wilderness
- Happy Dog
- Apple
- Umpqua
- Private
- Division Break
- Drop Point
- Value at Risk
- Planned Road as Line
- Fire Edge
- Wildfire Daily Fire Perimeter



Div Z

Boulder Creek Wilderness

Illahee Flats Substation

North American 1983 Datum Lat/Long

FC Point Type Label	Latitude WGS84 DDM	Longitude WGS84 DDM
Division Break Div M	43° 17.593' N	122° 36.264' W
Division Break Div A	43° 20.217' N	122° 36.613' W
Drop Point 60	43° 17.739' N	122° 36.558' W
Drop Point 30	43° 20.223' N	122° 36.616' W
Drop Point 40	43° 20.405' N	122° 33.835' W
Value at Risk Illahee Flats Substation	43° 17.963' N	122° 34.874' W

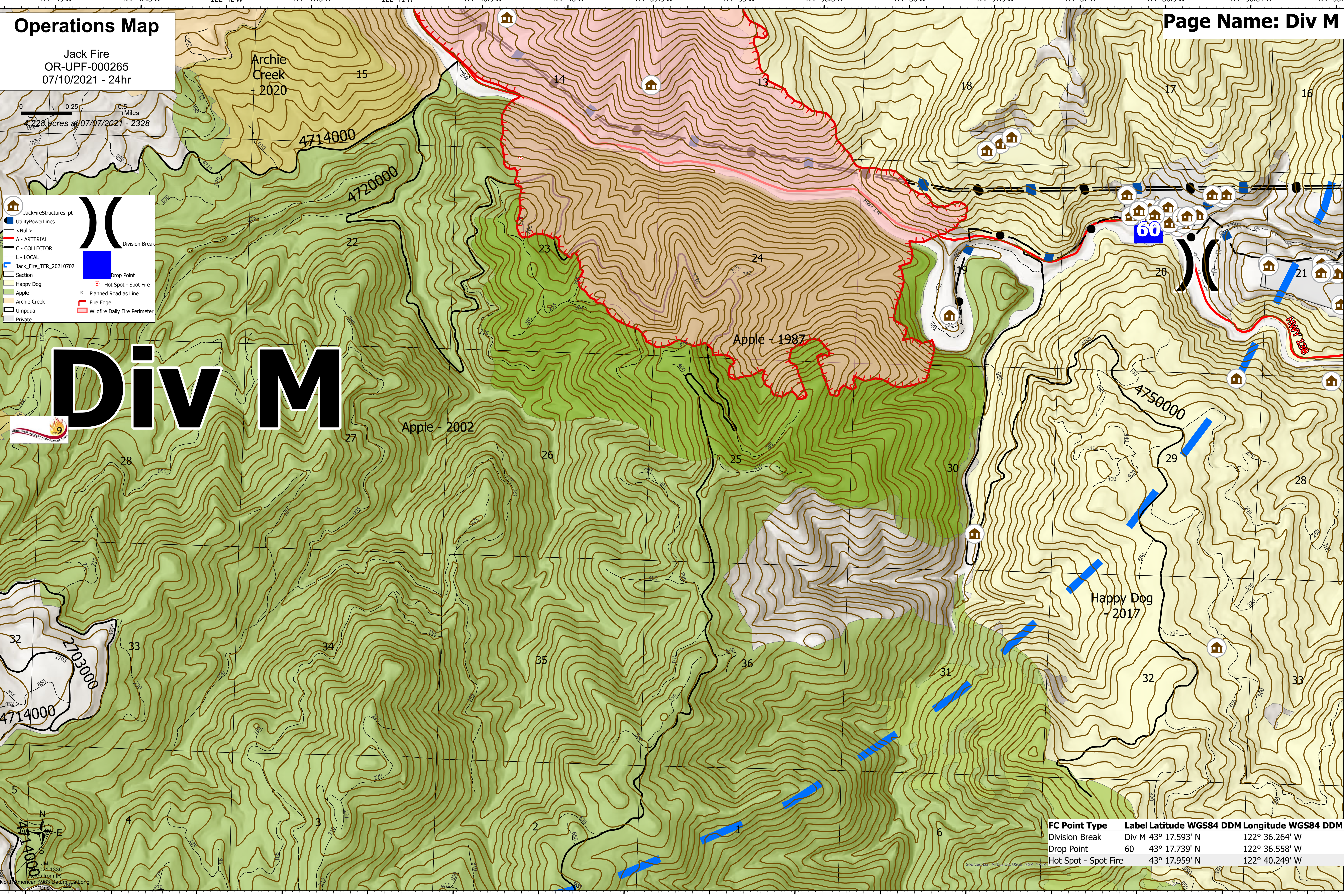
Operations Map

Jack Fire
OR-UPF-000265
07/10/2021 - 24hr

228 acres at 07/07/2021 - 2328

- JackFireStructures_pt
- UtilityPowerLines
- <Null>
- A - ARTERIAL
- C - COLLECTOR
- L - LOCAL
- Jack_Fire_TFR_20210707
- Section
- Happy Dog
- Apple
- Archie Creek
- Umpqua
- Private
- Division Break
- Drop Point
- Hot Spot - Spot Fire
- Planned Road as Line
- Fire Edge
- Wildfire Daily Fire Perimeter

Div M



FC Point Type	Label	Latitude WGS84 DDM	Longitude WGS84 DDM
Division Break	Div M	43° 17.593' N	122° 36.264' W
Drop Point	60	43° 17.739' N	122° 36.558' W
Hot Spot - Spot Fire		43° 17.959' N	122° 40.249' W

North American 1983 Datum, Lat/Long
Sources: Esri, DeLorme, USGS, NOAA, IGN, SRSB

Operations Map

Jack Fire
OR-UPF-000265
07/10/2021 - 24hr

0 0.25 0.5 Miles
4,218 acres at 07/07/2021 - 2328

- JackFireStructures_pt
- UtilityPowerLines
- <Null>
- A - ARTERIAL
- C - COLLECTOR
- L - LOCAL
- Jack_Fire_TFR_20210707
- Section
- Happy Dog
- Apple
- Archie Creek
- Umpqua
- Federal
- Hot Spot - Spot Fire
- Fire Edge
- Wildfire Daily Fire Perimeter



Div M

FC Point Type	Label	Latitude WGS84 DDM	Longitude WGS84 DDM
Hot Spot - Spot Fire		43° 17.959' N	122° 40.249' W

35
JM
7/9/2021 1336
Acres from IR
North America 1983 Datum, Lat,Long