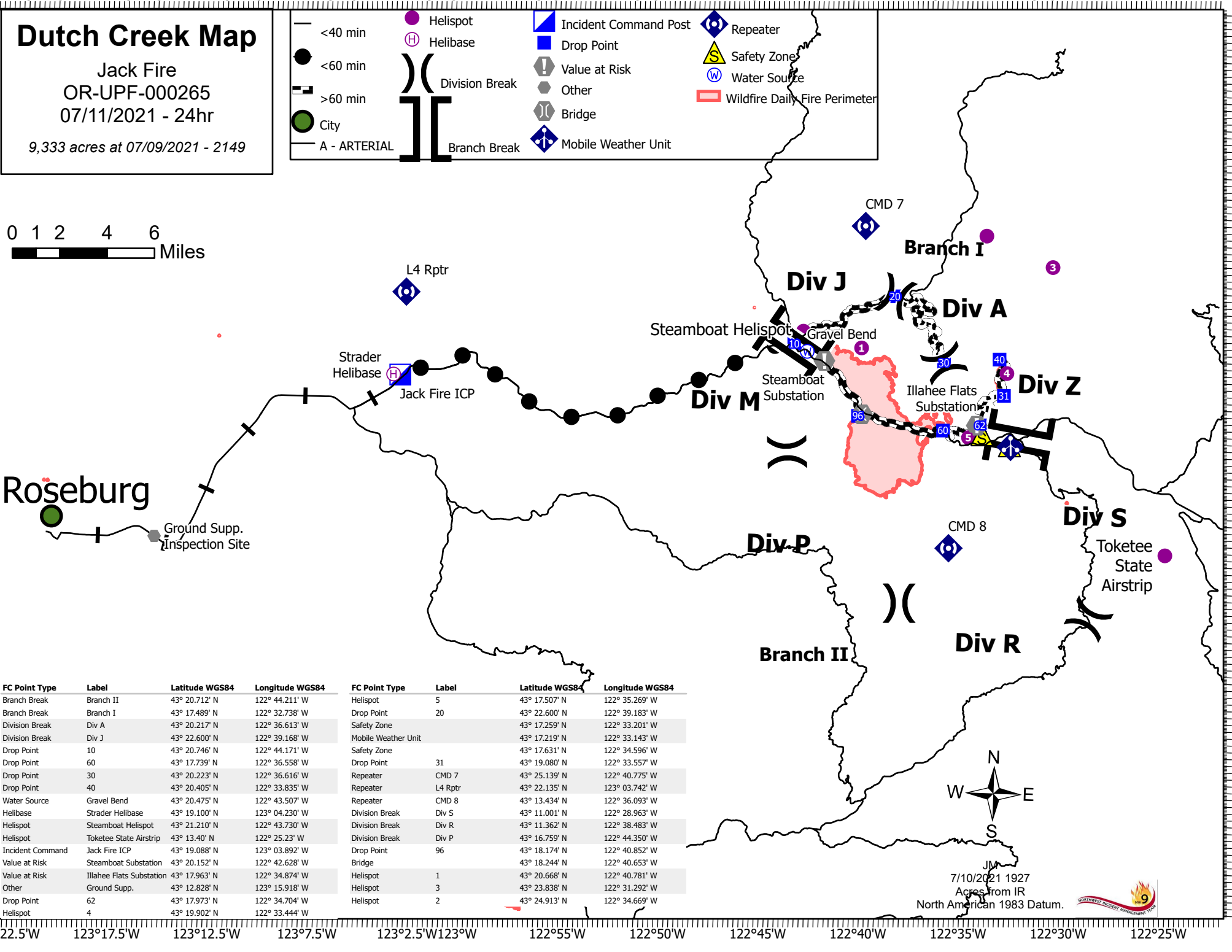
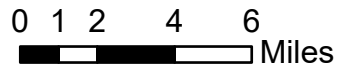


Dutch Creek Map

Jack Fire
OR-UPF-000265
07/11/2021 - 24hr

9,333 acres at 07/09/2021 - 2149

	<40 min		Helispot		Incident Command Post		Repeater
	<60 min		Helibase		Drop Point		Safety Zone
	>60 min		Division Break		Value at Risk		Water Source
			Branch Break		Other		Wildfire Daily Fire Perimeter
					Bridge		
					Mobile Weather Unit		



FC Point Type	Label	Latitude WGS84	Longitude WGS84	FC Point Type	Label	Latitude WGS84	Longitude WGS84
Branch Break	Branch II	43° 20.712' N	122° 44.211' W	Helispot	5	43° 17.507' N	122° 35.269' W
Branch Break	Branch I	43° 17.489' N	122° 32.738' W	Drop Point	20	43° 22.600' N	122° 39.183' W
Division Break	Div A	43° 20.217' N	122° 36.613' W	Safety Zone		43° 17.259' N	122° 33.201' W
Division Break	Div J	43° 22.600' N	122° 39.168' W	Mobile Weather Unit		43° 17.219' N	122° 33.143' W
Drop Point	10	43° 20.746' N	122° 44.171' W	Safety Zone		43° 17.631' N	122° 34.596' W
Drop Point	60	43° 17.739' N	122° 36.558' W	Drop Point	31	43° 19.080' N	122° 33.557' W
Drop Point	30	43° 20.223' N	122° 36.616' W	Repeater	CMD 7	43° 25.139' N	122° 40.775' W
Drop Point	40	43° 20.405' N	122° 33.835' W	Repeater	L4 Rptr	43° 22.135' N	123° 03.742' W
Water Source	Gravel Bend	43° 20.475' N	122° 43.507' W	Repeater	CMD 8	43° 13.434' N	122° 36.093' W
Helibase	Strader Helibase	43° 19.100' N	123° 04.230' W	Division Break	Div S	43° 11.001' N	122° 28.963' W
Helispot	Steamboat Helispot	43° 21.210' N	122° 43.730' W	Division Break	Div R	43° 11.362' N	122° 38.483' W
Helispot	Toketee State Airstrip	43° 13.40' N	122° 25.23' W	Division Break	Div P	43° 16.759' N	122° 44.350' W
Incident Command	Jack Fire ICP	43° 19.088' N	123° 03.892' W	Drop Point	96	43° 18.174' N	122° 40.852' W
Value at Risk	Steamboat Substation	43° 20.152' N	122° 42.628' W	Bridge		43° 18.244' N	122° 40.653' W
Value at Risk	Illahee Flats Substation	43° 17.963' N	122° 34.874' W	Helispot	1	43° 20.668' N	122° 40.781' W
Other	Ground Supp.	43° 12.828' N	123° 15.918' W	Helispot	3	43° 23.838' N	122° 31.292' W
Drop Point	62	43° 17.973' N	122° 34.704' W	Helispot	2	43° 24.913' N	122° 34.669' W
Helispot	4	43° 19.902' N	122° 33.444' W				



7/10/2021 1927
Acres from IR
North American 1983 Datum.

