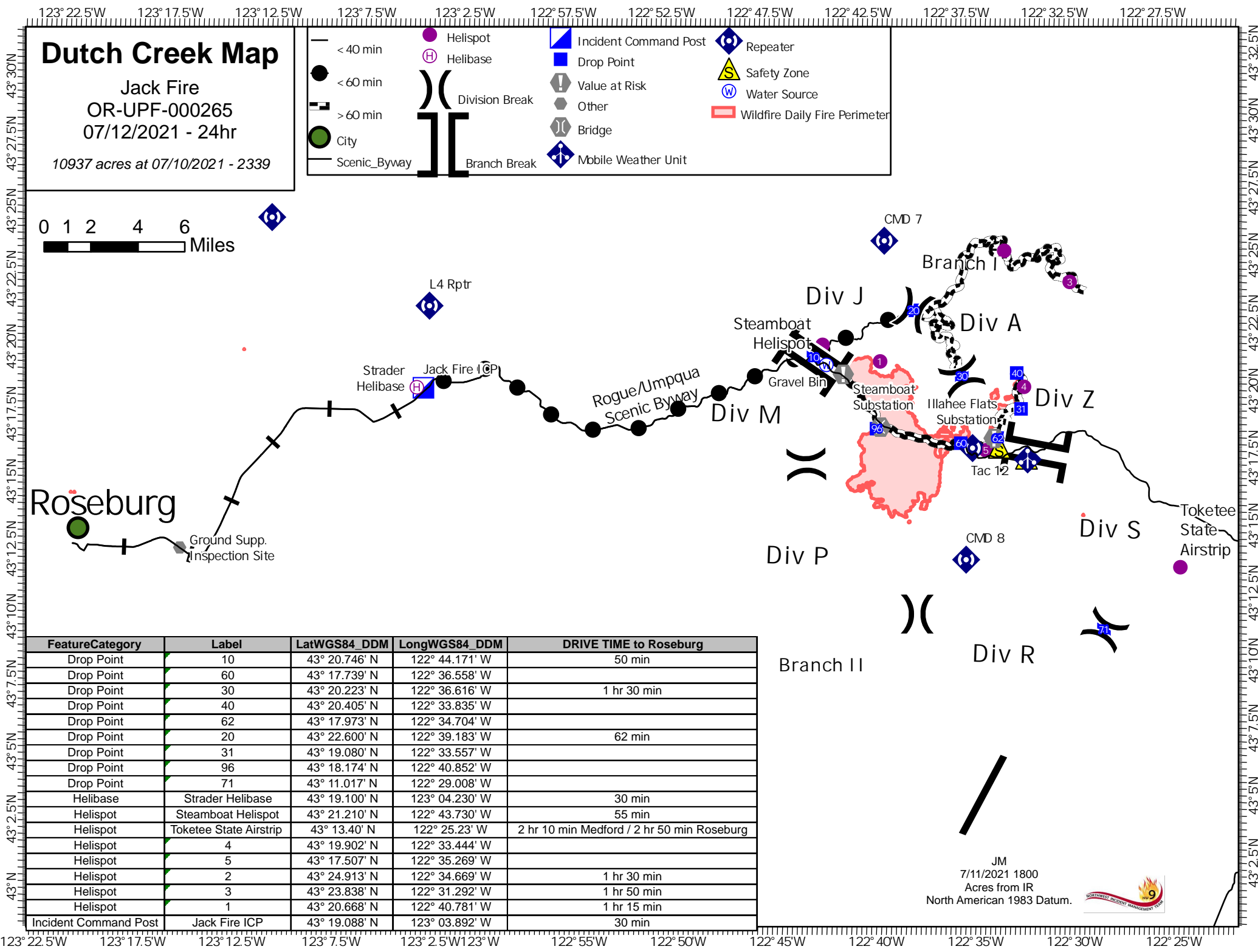
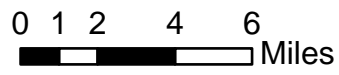


# Dutch Creek Map

Jack Fire  
OR-UPF-000265  
07/12/2021 - 24hr

10937 acres at 07/10/2021 - 2339

< 40 min	Helispot	Incident Command Post	Repeater
< 60 min	Helibase	Drop Point	Safety Zone
> 60 min	Division Break	Value at Risk	Water Source
City	Branch Break	Other	Wildfire Daily Fire Perimeter
Scenic_Byway		Bridge	
		Mobile Weather Unit	



FeatureCategory	Label	LatWGS84_DDM	LongWGS84_DDM	DRIVE TIME to Roseburg
Drop Point	10	43° 20.746' N	122° 44.171' W	50 min
Drop Point	60	43° 17.739' N	122° 36.558' W	
Drop Point	30	43° 20.223' N	122° 36.616' W	1 hr 30 min
Drop Point	40	43° 20.405' N	122° 33.835' W	
Drop Point	62	43° 17.973' N	122° 34.704' W	
Drop Point	20	43° 22.600' N	122° 39.183' W	62 min
Drop Point	31	43° 19.080' N	122° 33.557' W	
Drop Point	96	43° 18.174' N	122° 40.852' W	
Drop Point	71	43° 11.017' N	122° 29.008' W	
Helibase	Strader Helibase	43° 19.100' N	123° 04.230' W	30 min
Helispot	Steamboat Helispot	43° 21.210' N	122° 43.730' W	55 min
Helispot	Toketee State Airstrip	43° 13.40' N	122° 25.23' W	2 hr 10 min Medford / 2 hr 50 min Roseburg
Helispot	4	43° 19.902' N	122° 33.444' W	
Helispot	5	43° 17.507' N	122° 35.269' W	
Helispot	2	43° 24.913' N	122° 34.669' W	1 hr 30 min
Helispot	3	43° 23.838' N	122° 31.292' W	1 hr 50 min
Helispot	1	43° 20.668' N	122° 40.781' W	1 hr 15 min
Incident Command Post	Jack Fire ICP	43° 19.088' N	123° 03.892' W	30 min

JM  
7/11/2021 1800  
Acres from IR  
North American 1983 Datum.

