

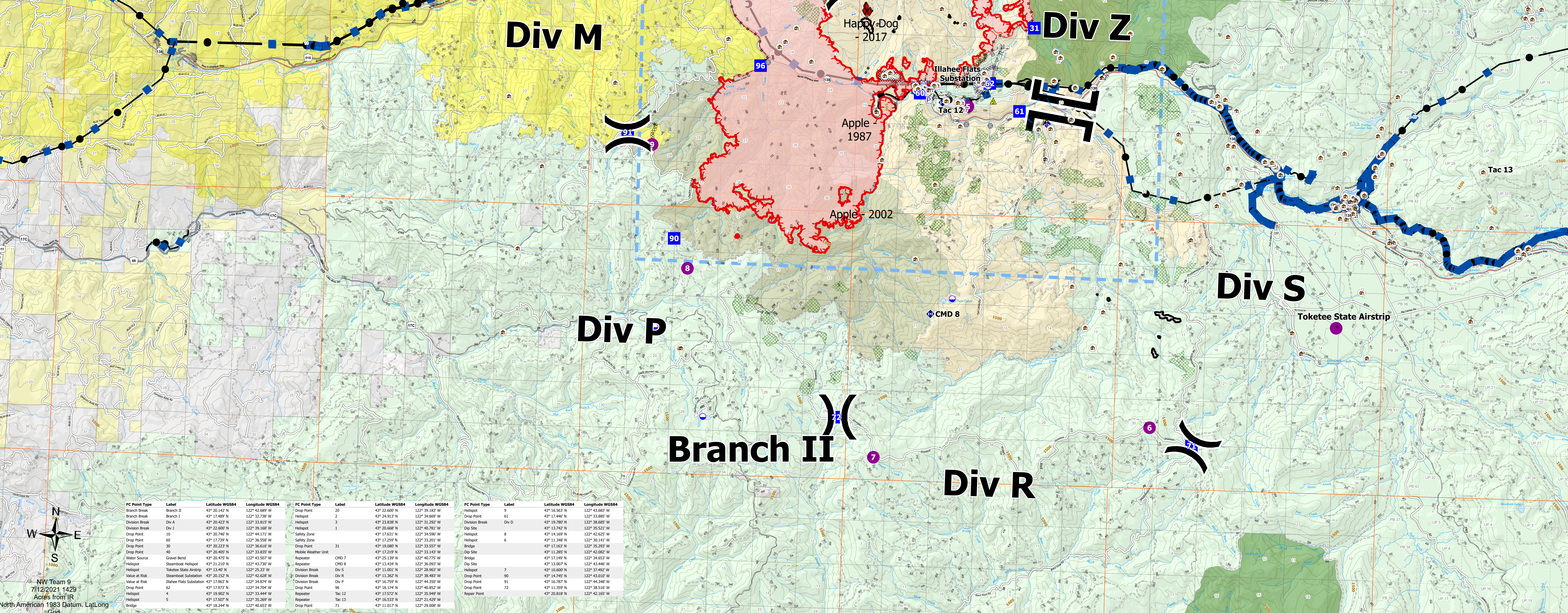
Operations Map

Jack Fire
OR-UPF-000265
07/12/2021 - 24hr

12533 acres at 07/12/2021 0110



- JackFireStructures_pt
- ATP
- Pump
- Water Tank
- Dip Site
- Helispot
- Division Break
- Branch Break
- Drop Point
- Value at Risk
- Bridge
- Repair Point
- Mobile Weather Unit
- Repeater
- Safety Zone
- Water Source
- Completed Dozer Line
- Completed Hand Line
- Planned Dozer as Line
- Planned Road as Line
- Retardant Drop
- Temporary Flight Restriction
- Fire Edge
- Wildfire Daily Fire Perimeter
- UtilityPowerLines
- Contours 100ft
- CC Units
- CC Alternative_Final_Units
- DryUnits
- JackFinalUnits
- Area to Protect (ATP)
- Land Ownership
- BLM
- PV
- <all other values>
- Forest Service Land
- Wilderness
- Historic Fire
- Apple
- Archie Creek
- Happy Dog
- Protected Section
- Section
- Township
- Forest Service Roads
- Paved Road
- Gravel Road
- Dirt Roads
- Unimproved Roads
- Closed Roads
- <all other values>
- HIFLD Roads
- Primary Highway
- Secondary Highway
- Paved Roads
- Dirt (Not Paved)
- Interstate Not Paved
- US Route Not Paved



FC Point Type	Label	Latitude WGS84	Longitude WGS84	FC Point Type	Label	Latitude WGS84	Longitude WGS84	FC Point Type	Label	Latitude WGS84	Longitude WGS84
Branch Break	Branch II	43° 20.142' N	122° 42.687' W	Drop Point	20	43° 22.607' N	122° 39.183' W	Helispot	5	43° 15.563' N	122° 43.683' W
Branch Break	Branch I	43° 17.489' N	122° 32.237' W	Drop Point	2	43° 24.913' N	122° 34.667' W	Drop Point	61	43° 17.440' N	122° 33.889' W
Division Break	Div 1	43° 20.423' N	122° 33.252' W	Helispot	3	43° 20.423' N	122° 33.252' W	Division Break	Div D	43° 19.782' N	122° 36.695' W
Division Break	Div 2	43° 22.607' N	122° 39.183' W	Helispot	1	43° 20.686' N	122° 36.781' W	Dip Site	8	43° 13.742' N	122° 35.521' W
Drop Point	10	43° 20.740' N	122° 44.171' W	Safety Zone	1	43° 17.631' N	122° 34.599' W	Helispot	8	43° 14.587' N	122° 42.629' W
Drop Point	40	43° 17.210' N	122° 35.252' W	Helispot	6	43° 11.348' N	122° 35.141' W	Helispot	6	43° 11.348' N	122° 35.141' W
Drop Point	30	43° 20.223' N	122° 36.536' W	Drop Point	31	43° 19.087' N	122° 35.557' W	Bridge	30	43° 17.653' N	122° 35.293' W
Drop Point	40	43° 20.605' N	122° 33.837' W	Mobile Weather Unit	CMD 7	43° 17.285' N	122° 33.147' W	Dip Site	7	43° 12.285' N	122° 42.082' W
Gravel Bend	Steamboat	43° 20.475' N	122° 41.527' W	Repeater	CMD 8	43° 25.138' N	122° 36.773' W	Bridge	6	43° 17.448' N	122° 34.653' W
Gravel Bend	Steamboat	43° 21.101' N	122° 43.737' W	Repeater	CMD 8	43° 13.047' N	122° 36.093' W	Dip Site	7	43° 13.067' N	122° 43.446' W
Helispot	Steamboat Helispot	43° 13.461' N	122° 35.227' W	Division Break	Div S	43° 11.001' N	122° 36.962' W	Helispot	7	43° 10.600' N	122° 35.492' W
Value at Risk	Toketee State Airstrip	43° 20.512' N	122° 42.423' W	Division Break	Div P	43° 11.348' N	122° 36.462' W	Drop Point	80	43° 15.497' N	122° 41.010' W
Value at Risk	Happy Dog Substation	43° 17.967' N	122° 34.354' W	Division Break	Div R	43° 16.759' N	122° 44.354' W	Drop Point	91	43° 16.767' N	122° 44.348' W
Drop Point	62	43° 17.973' N	122° 34.354' W	Drop Point	96	43° 18.174' N	122° 40.852' W	Drop Point	72	43° 11.357' N	122° 38.516' W
Helispot	4	43° 19.002' N	122° 35.947' W	Repeater	Tac 12	43° 19.072' N	122° 35.949' W	Repeater	71	43° 20.848' N	122° 42.185' W
Helispot	5	43° 17.507' N	122° 35.269' W	Repeater	Tac 13	43° 16.533' N	122° 31.429' W	Drop Point	71	43° 11.017' N	122° 29.002' W
Bridge	5	43° 18.244' N	122° 40.627' W								

NW Team 9
7/12/2021 1429
Acres from IR
North American 1983 Datum, Lat/Long