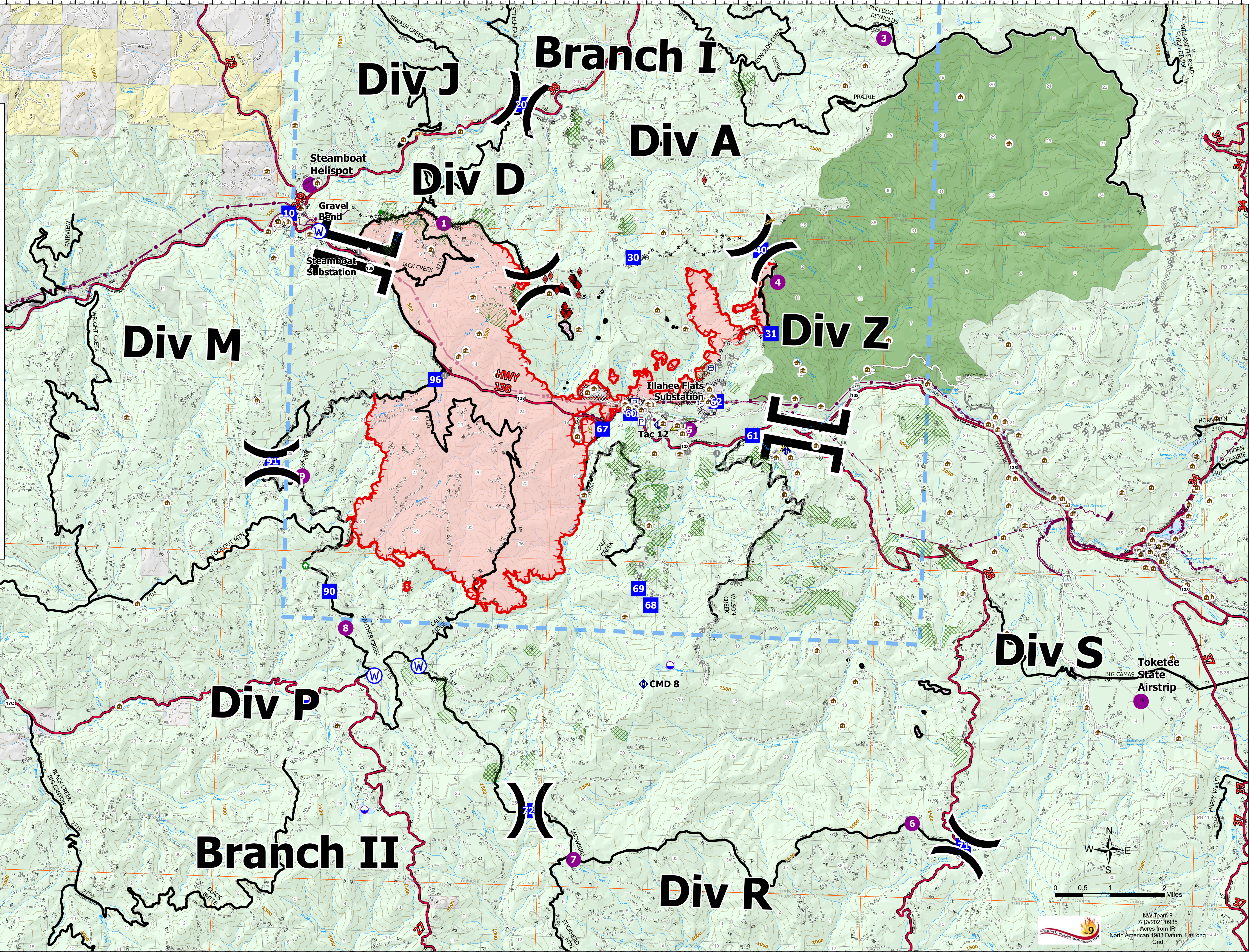


Operations Map

Jack Fire
OR-UPF-000265
07/13/2021 - 24hr
13795 acres at 07/12/2021 2220

Point Type	Label	Latitude WGS84	Longitude WGS84
Branch Break	Branch II	43° 20.142' N	122° 42.689' W
Branch Break	Branch I	43° 17.489' N	122° 33.738' W
Division Break	Div A	43° 20.423' N	122° 33.815' W
Division Break	Div J	43° 22.600' N	122° 39.166' W
Drop Point	10	43° 20.746' N	122° 44.171' W
Drop Point	60	43° 17.799' N	122° 36.558' W
Drop Point	30	43° 20.223' N	122° 36.616' W
Drop Point	40	43° 20.405' N	122° 33.835' W
Water Source	Gravel Bend	43° 20.475' N	122° 43.507' W
Helispot	Steamboat Helispot	43° 21.210' N	122° 43.730' W
Helispot	Toketeē State Airstrip	43° 13.40' N	122° 25.23' W
Value at Risk	Steamboat Substation	43° 20.152' N	122° 42.626' W
Value at Risk	Illahee Flats Substation	43° 17.963' N	122° 36.874' W
Drop Point	62	43° 17.973' N	122° 34.704' W
Helispot	4	43° 19.902' N	122° 33.444' W
Helispot	5	43° 17.507' N	122° 35.269' W
Bridge	20	43° 18.244' N	122° 40.653' W
Drop Point	2	43° 22.600' N	122° 39.183' W
Helispot	2	43° 24.913' N	122° 34.669' W
Helispot	3	43° 23.838' N	122° 31.292' W
Helispot	1	43° 20.669' N	122° 40.781' W
Safety Zone	31	43° 17.631' N	122° 34.596' W
Safety Zone	31	43° 17.259' N	122° 33.201' W
Drop Point	31	43° 19.080' N	122° 33.557' W
Mobile Weather Unit	CMD 8	43° 17.219' N	122° 33.143' W
Repeater	CMD 8	43° 13.434' N	122° 36.093' W
Division Break	Div S	43° 11.001' N	122° 28.963' W
Division Break	Div R	43° 11.362' N	122° 36.463' W
Division Break	Div P	43° 16.793' N	122° 44.350' W
Drop Point	96	43° 18.174' N	122° 40.852' W
Repeater	Tac 12	43° 17.572' N	122° 35.949' W
Drop Point	71	43° 11.017' N	122° 29.008' W
Helispot	9	43° 16.563' N	122° 43.683' W
Drop Point	61	43° 17.446' N	122° 33.885' W
Division Break	Div D	43° 19.780' N	122° 36.685' W
Helispot	8	43° 13.762' N	122° 35.521' W
Helispot	8	43° 14.169' N	122° 42.625' W
Helispot	6	43° 11.348' N	122° 30.141' W
Bridge	6	43° 17.163' N	122° 35.293' W
Dip Site	7	43° 11.285' N	122° 42.082' W
Bridge	7	43° 17.149' N	122° 34.653' W
Dip Site	7	43° 13.007' N	122° 43.446' W
Helispot	7	43° 10.600' N	122° 37.492' W
Drop Point	90	43° 14.749' N	122° 43.016' W
Drop Point	91	43° 16.287' N	122° 44.348' W
Drop Point	72	43° 11.359' N	122° 38.516' W
Drop Point	67	43° 17.474' N	122° 37.167' W
Drop Point	68	43° 14.695' N	122° 35.987' W
Drop Point	69	43° 14.950' N	122° 36.265' W
Structure Wrap	7	43° 15.140' N	122° 43.545' W
Water Source	7	43° 13.803' N	122° 41.968' W
Repair Point	7	43° 13.424' N	122° 41.424' W
Repair Point	7	43° 20.818' N	122° 42.165' W

43° 09' 51" N 122° 54' 00" W to 43° 09' 51" N 122° 23' 00" W



NW Team 9
7/13/2021 0935
Acres from IR
North American 1983 Datum, LatLong Grid