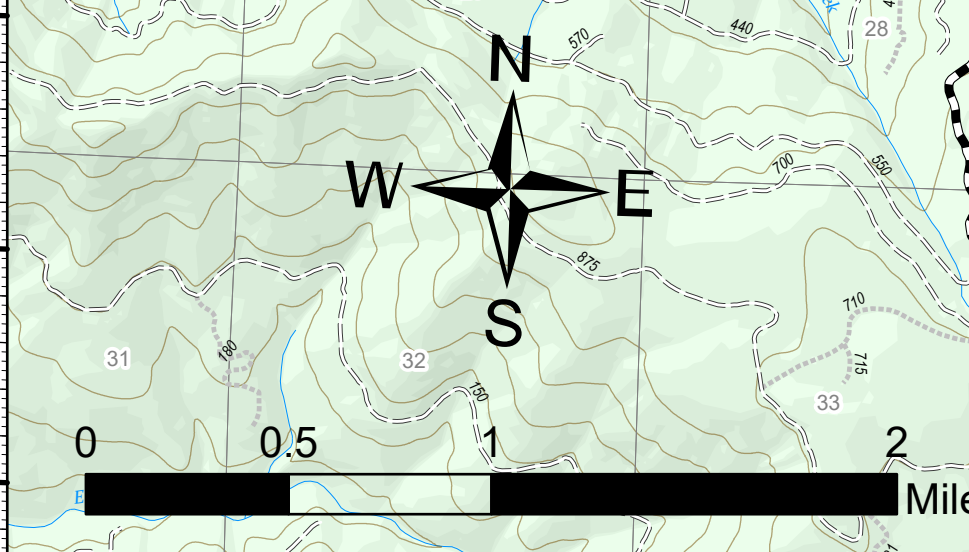


Operations Map

Jack Fire
OR-UPF-000265
07/13/2021 - 24hr

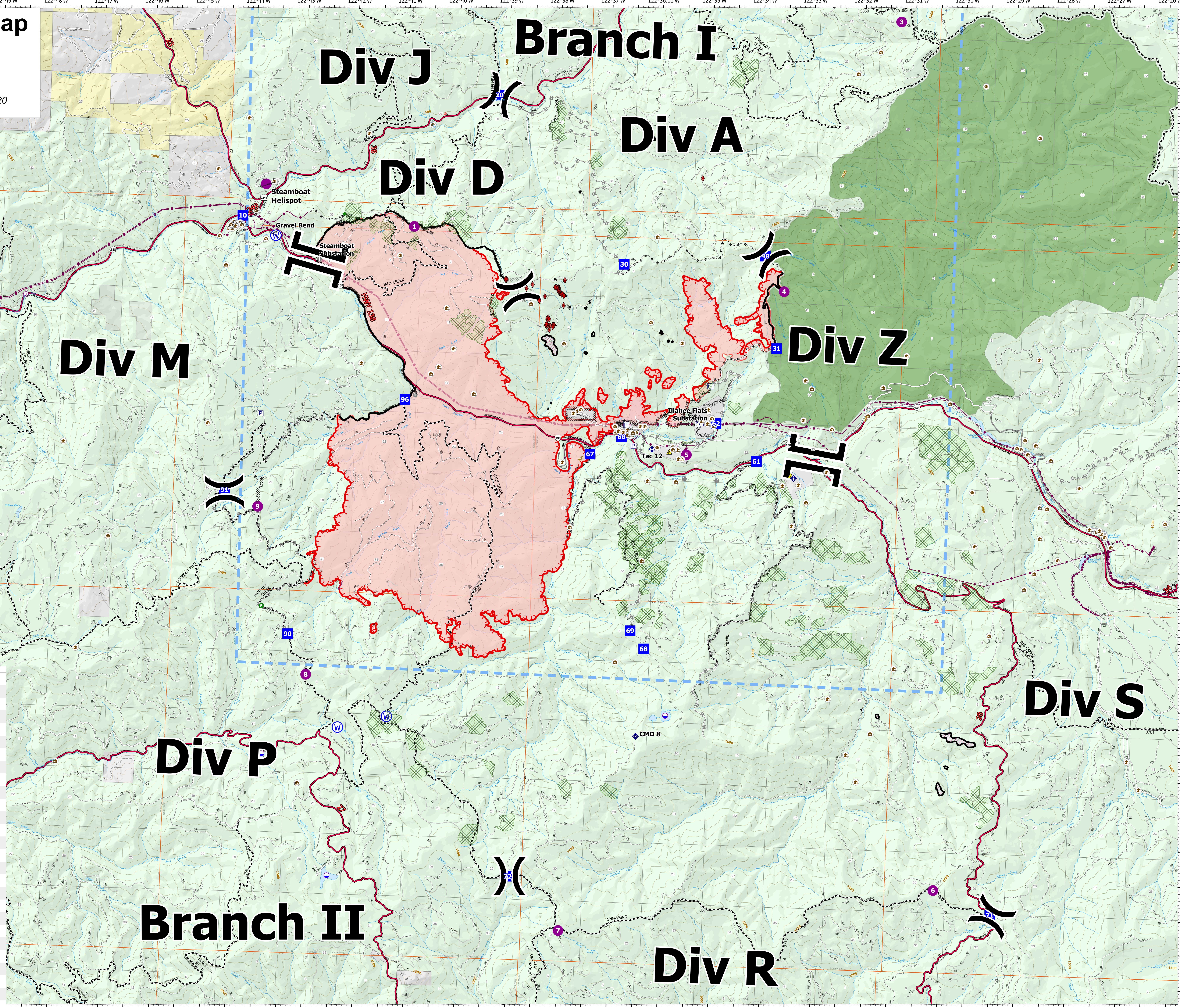
13795 acres at 07/12/2021 2220

- JackFireStructures_pt
- ATP
- Pump
- Water Tank
- Check Point
- Dip Site
- Hellspot
- Planned Hand Line
- Planned Road as Line
- Retardant Drop
- Temporary Flight Restriction
- Fire Edge
- Contained Line
- Wildfire Daily Fire Perimeter
- Utility Power Lines
- Contours 100ft
- Calf Units
- CC_Alternative_Final_Units
- DryUnits
- JackFinalUnits
- Area to Protect (ATP)
- Land Ownership
- BLM
- PV
- <all other values>
- Forest Service Land
- Wilderness
- Protracted Section
- Section
- Township
- Forest Service Roads
- Paved Road
- Gravel Road
- Dirt Roads
- Unimproved Roads
- Unspecified
- Closed Roads
- HIFLD Roads
- Primary Highway
- Secondary Highway
- Paved Roads
- Dirt (Not Paved)
- Interstate Not Paved
- US Route Not Paved
- A - Arterial
- C - Collector
- Drop Point
- Value at Risk
- Bridge
- Structure Wrap
- Repair Point
- Mobile Weather Unit
- Repeater
- Safety Zone
- Water Source
- Completed Dozer Line
- Completed Hand Line
- Completed Road as Line
- Planned Dozer Line



NW Team 9
7/13/2021 1747
Acres from IR
North American 1983 Datum - Lat/Long
Grid

FC Point Type	Label	Latitude WGS84	Longitude WGS84
Branch II	Branch II	43° 20.142' N	122° 42.689' W
Branch Break	Branch Break	43° 17.489' N	122° 32.738' W
Branch I	Branch I	43° 20.423' N	122° 33.815' W
Division Break	Div A	43° 22.600' N	122° 39.168' W
Drop Point	10	43° 20.746' N	122° 44.171' W
Drop Point	60	43° 17.739' N	122° 36.558' W
Drop Point	30	43° 20.223' N	122° 36.616' W
Drop Point	40	43° 20.465' N	122° 33.855' W
Water Source	Gravel Bend	43° 20.475' N	122° 43.507' W
Hellspot	Steamboat Hellspot	43° 21.210' N	122° 43.730' W
Hellspot	Tokete State Airstrip	43° 13.40' N	122° 25.23' W
Value at Risk	Steamboat Substation	43° 20.152' N	122° 42.628' W
Value at Risk	Illahée Flats Substation	43° 17.963' N	122° 34.874' W
Drop Point	62	43° 17.973' N	122° 34.704' W
Hellspot	4	43° 19.902' N	122° 33.444' W
Hellspot	5	43° 17.507' N	122° 35.269' W
Bridge	20	43° 18.244' N	122° 40.653' W
Drop Point	3	43° 22.600' N	122° 39.183' W
Hellspot	3	43° 23.838' N	122° 31.292' W
Hellspot	1	43° 20.668' N	122° 40.711' W
Safety Zone	1	43° 17.631' N	122° 34.596' W
Safety Zone	1	43° 17.259' N	122° 33.201' W
Drop Point	31	43° 19.080' N	122° 33.557' W
Mobile Weather Unit	CMD 8	43° 17.219' N	122° 33.143' W
Repeater	71	43° 13.594' N	122° 36.293' W
Division Break	Div S	43° 11.001' N	122° 38.963' W
Division Break	Div R	43° 11.362' N	122° 38.483' W
Division Break	Div P	43° 16.759' N	122° 44.350' W
Drop Point	96	43° 18.174' N	122° 40.852' W
Drop Point	Tac 12	43° 17.572' N	122° 35.949' W
Drop Point	71	43° 11.017' N	122° 39.088' W
Hellspot	9	43° 16.563' N	122° 43.683' W
Drop Point	61	43° 17.446' N	122° 33.885' W
Division Break	Div D	43° 19.780' N	122° 38.685' W
Dip Site	8	43° 13.742' N	122° 35.521' W
Hellspot	8	43° 14.169' N	122° 42.625' W
Hellspot	6	43° 11.948' N	122° 30.141' W
Bridge	6	43° 17.163' N	122° 35.293' W
Dip Site	6	43° 11.285' N	122° 42.082' W
Bridge	6	43° 17.149' N	122° 34.653' W
Dip Site	7	43° 13.007' N	122° 43.446' W
Hellspot	7	43° 10.600' N	122° 37.802' W
Drop Point	90	43° 14.745' N	122° 43.010' W
Drop Point	91	43° 16.787' N	122° 44.348' W
Drop Point	72	43° 11.359' N	122° 38.516' W
Drop Point	67	43° 14.744' N	122° 37.167' W
Drop Point	68	43° 14.695' N	122° 35.987' W
Drop Point	69	43° 14.595' N	122° 36.383' W
Structure Wrap	69	43° 15.140' N	122° 43.445' W
Water Source	69	43° 13.603' N	122° 41.008' W
Water Source	69	43° 13.424' N	122° 41.966' W
Check Point	69	43° 19.502' N	122° 48.395' W
Repair Point	69	43° 20.818' N	122° 42.165' W



122°51.5'W 122°50.5'W 122°49.5'W 122°48.5'W 122°47.5'W 122°46.5'W 122°45.5'W 122°44.5'W 122°43.5'W 122°42.5'W 122°41.5'W 122°40.5'W 122°39.5'W 122°38.5'W 122°37.5'W 122°36.5'W 122°35.5'W 122°34.5'W 122°33.5'W 122°32.5'W 122°31.5'W 122°30.5'W 122°29.5'W 122°28.5'W 122°27.5'W 122°26.5'W 122°25.5'W