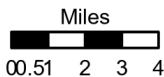


Dutch Creek Map

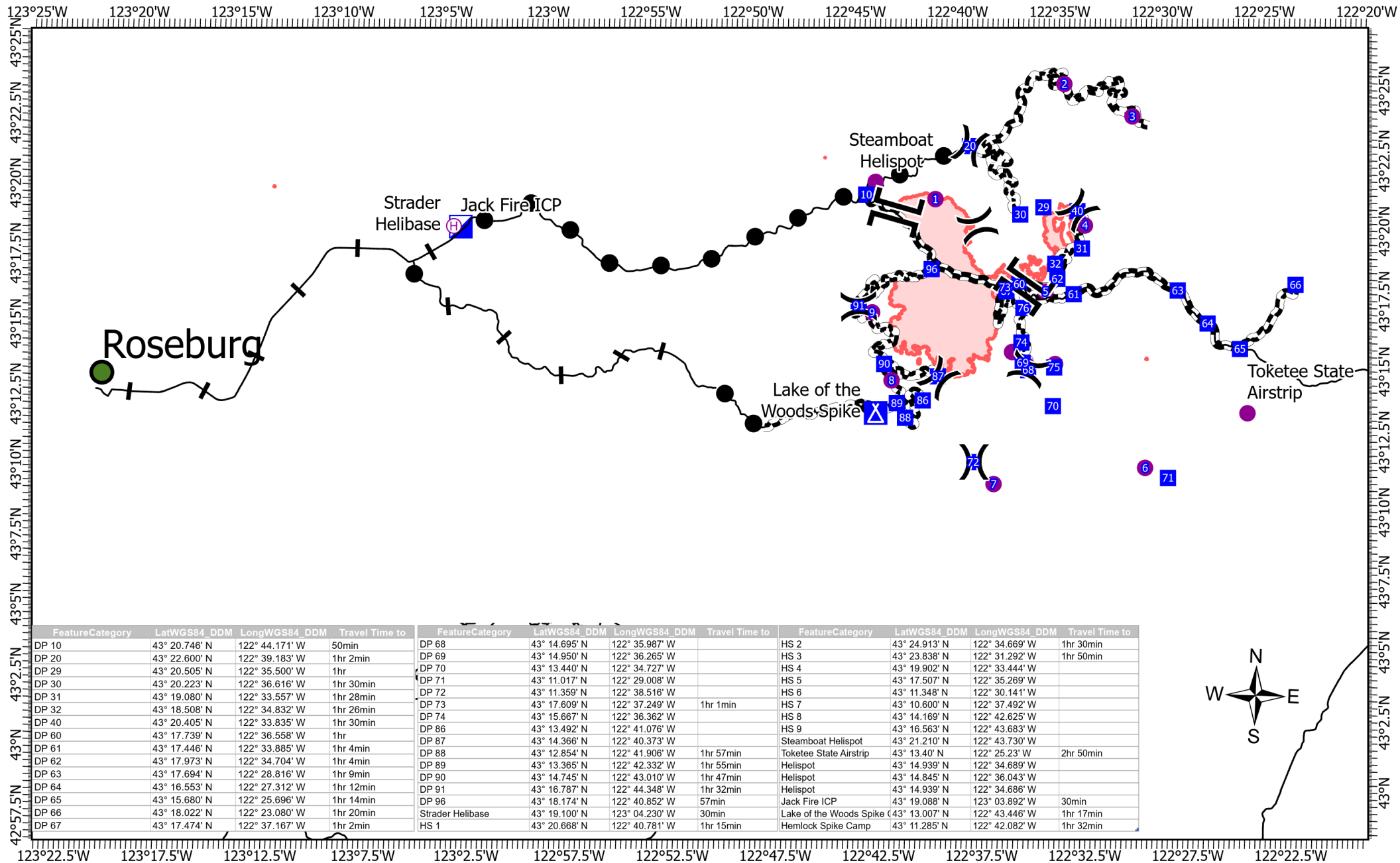


BG
7/15/2021 2028
North American 1983 Datum.



07/16/2021 - 24hr

City	Division Break	<40 min
Scenic_Byway	Branch Break	<60 min
Helispot	Incident Command Post	>60 min
Helibase	Drop Point	Wildfire Daily Fire Perimeter
	Camp	



FeatureCategory	LatWGS84_DDM	LongWGS84_DDM	Travel Time to	FeatureCategory	LatWGS84_DDM	LongWGS84_DDM	Travel Time to	FeatureCategory	LatWGS84_DDM	LongWGS84_DDM	Travel Time to
DP 10	43° 20.746' N	122° 44.171' W	50min	DP 68	43° 14.695' N	122° 35.987' W		HS 2	43° 24.913' N	122° 34.669' W	1hr 30min
DP 20	43° 22.600' N	122° 39.183' W	1hr 2min	DP 69	43° 14.950' N	122° 36.265' W		HS 3	43° 23.838' N	122° 31.292' W	1hr 50min
DP 29	43° 20.505' N	122° 35.500' W	1hr	DP 70	43° 13.440' N	122° 34.727' W		HS 4	43° 19.902' N	122° 33.444' W	
DP 30	43° 20.223' N	122° 36.616' W	1hr 30min	DP 71	43° 11.017' N	122° 29.008' W		HS 5	43° 17.507' N	122° 35.269' W	
DP 31	43° 19.080' N	122° 33.557' W	1hr 28min	DP 72	43° 11.359' N	122° 38.516' W		HS 6	43° 11.348' N	122° 30.141' W	
DP 32	43° 18.508' N	122° 34.832' W	1hr 26min	DP 73	43° 17.609' N	122° 37.249' W	1hr 1min	HS 7	43° 10.600' N	122° 37.492' W	
DP 40	43° 20.405' N	122° 33.835' W	1hr 30min	DP 74	43° 15.667' N	122° 36.362' W		HS 8	43° 14.169' N	122° 42.625' W	
DP 60	43° 17.739' N	122° 36.558' W	1hr	DP 86	43° 13.492' N	122° 41.076' W		HS 9	43° 16.563' N	122° 43.683' W	
DP 61	43° 17.446' N	122° 33.885' W	1hr 4min	DP 87	43° 14.366' N	122° 40.373' W		Steamboat Helispot	43° 21.210' N	122° 43.730' W	
DP 62	43° 17.973' N	122° 34.704' W	1hr 4min	DP 88	43° 12.854' N	122° 41.906' W	1hr 57min	Toketee State Airstrip	43° 13.40' N	122° 25.23' W	2hr 50min
DP 63	43° 17.694' N	122° 28.816' W	1hr 9min	DP 89	43° 13.365' N	122° 42.332' W	1hr 55min	Helispot	43° 14.939' N	122° 34.689' W	
DP 64	43° 16.553' N	122° 27.312' W	1hr 12min	DP 90	43° 14.745' N	122° 43.010' W	1hr 47min	Helispot	43° 14.845' N	122° 36.043' W	
DP 65	43° 15.680' N	122° 25.696' W	1hr 14min	DP 91	43° 16.787' N	122° 44.348' W	1hr 32min	Helispot	43° 14.939' N	122° 34.686' W	
DP 66	43° 18.022' N	122° 23.080' W	1hr 20min	DP 96	43° 18.174' N	122° 40.852' W	57min	Jack Fire ICP	43° 19.088' N	123° 03.892' W	30min
DP 67	43° 17.474' N	122° 37.167' W	1hr 2min	Strader Helibase	43° 19.100' N	123° 04.230' W	30min	Lake of the Woods Spike	43° 13.007' N	122° 43.446' W	1hr 17min
				HS 1	43° 20.668' N	122° 40.781' W	1hr 15min	Hemlock Spike Camp	43° 11.285' N	122° 42.082' W	1hr 32min

