

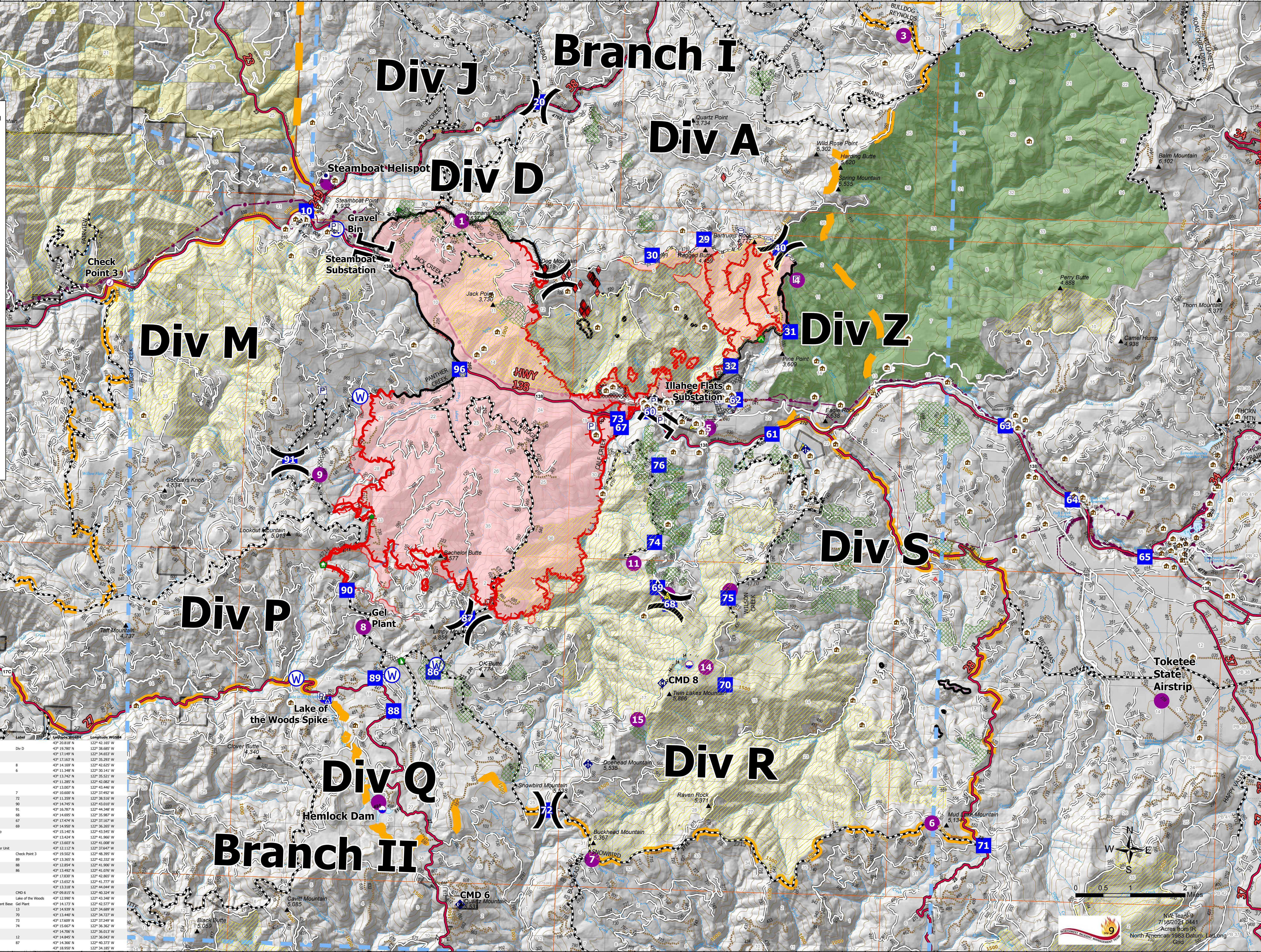
Operations Map
 Jack Fire
 OR-UPF-000265
 07/16/2021 - 24hr
 16667 acres as of 07/15/2021 2220

- ▲ Summit
- JackFireStructures_pt
- ◆ ATP
- ◆ Other Property
- Pump
- Water Tank
- Check Point
- Dip Site
- Mobile Retardant Base
- Helispot
- Sling Site
- Division Break
- Branch Break
- Drop Point
- Camp
- Value at Risk
- Bridge
- Structure Wrap
- Repair Point
- Dozer Push
- Culvert
- Mobile Weather Unit
- Repeater
- Safety Zone
- Water Source
- Completed Dozer Line
- Completed Hand Line
- R - Completed Road as Line
- H - Planned Dozer Line
- H - Planned Hand Line
- R - Planned Road as Line
- Retardant Drop
- Temporary Flight Restriction
- Fire Edge
- Contained Line
- Wildfire Daily Fire Perimeter
- Utility Power Lines
- Contours 100ft

- Area Closure
 - Roadless Areas Inventoried
 - Timber Sale
 - Area to Protect (ATP)
- Land Ownership**
- BLM
 - PV
 - <all other values>
 - Forest Service Land
 - Wilderness
 - Protracted Section
 - Section
 - Township
- HIFLD Roads**
- Primary Highway
 - Secondary Highway
 - Paved Roads
 - Dirt (Not Paved)
 - Interstate Not Paved
 - US Route Not Paved
 - A - Arterial
 - C - Collector
- Forest Service Roads**
- Paved Road
 - Gravel Road
 - Dirt Roads
 - Unimproved Roads
 - Unspecified
 - Closed Roads
 - <all other values>
- NHDWaterbody**
- Lake / Pond
 - Lake / Pond (Intermittent)
 - Reservoir
- NHDFlowline**
- Stream/River

FC Point Type	Label	Latitude WGS84	Longitude WGS84	FC Point Type	Label	Latitude WGS84	Longitude WGS84
Branch Break	Branch II	43° 20.142' N	122° 42.689' W	Repair Point	Div D	43° 20.818' N	122° 42.165' W
Branch Break	Branch I	43° 17.427' N	122° 32.707' W	Division Break	Div D	43° 15.907' N	122° 38.695' W
Division Break	Div A	43° 20.423' N	122° 33.815' W	Bridge		43° 17.149' N	122° 34.653' W
Division Break	Div J	43° 22.600' N	122° 39.168' W	Bridge		43° 17.183' N	122° 35.293' W
Drop Point	10	43° 20.740' N	122° 44.372' W	Helispot	8	43° 24.689' N	122° 40.629' W
Drop Point	60	43° 17.739' N	122° 36.568' W	Helispot	6	43° 13.348' N	122° 38.141' W
Drop Point	30	43° 20.223' N	122° 36.616' W	Dip Site		43° 13.742' N	122° 35.521' W
Drop Point	40	43° 20.405' N	122° 33.853' W	Dip Site		43° 11.285' N	122° 42.082' W
Gravel Bin	Gravel Bin	43° 20.417' N	122° 43.507' W	Dip Site		43° 13.007' N	122° 41.946' W
Steamboat Helispot	Steamboat Helispot	43° 21.210' N	122° 43.730' W	Helispot	7	43° 10.600' N	122° 37.492' W
Helispot	Toketee State Airstrip	43° 13.407' N	122° 25.237' W	Drop Point	72	43° 11.339' N	122° 38.518' W
Steamboat Substation	Steamboat Substation	43° 20.322' N	122° 42.832' W	Drop Point	90	43° 14.767' N	122° 41.020' W
Illahee Flats Substation	Illahee Flats Substation	43° 17.637' N	122° 34.974' W	Drop Point	91	43° 15.787' N	122° 44.348' W
Drop Point	62	43° 17.973' N	122° 34.704' W	Drop Point	68	43° 14.655' N	122° 35.987' W
Helispot	4	43° 19.902' N	122° 33.444' W	Drop Point	67	43° 17.474' N	122° 37.167' W
Helispot	5	43° 17.507' N	122° 35.269' W	Drop Point	69	43° 14.950' N	122° 36.265' W
Bridge	5	43° 18.244' N	122° 40.653' W	Structure Wrap		43° 15.140' N	122° 43.545' W
Drop Point	20	43° 22.600' N	122° 39.168' W	Water Source		43° 13.424' N	122° 41.966' W
Drop Point	29	43° 20.560' N	122° 35.500' W	Water Source		43° 13.607' N	122° 41.008' W
Drop Point	32	43° 18.508' N	122° 34.832' W	Mobile Weather Unit		43° 13.112' N	122° 37.647' W
Drop Point	63	43° 17.694' N	122° 28.816' W	Check Point 3		43° 19.502' N	122° 48.395' W
Drop Point	64	43° 16.537' N	122° 27.212' W	Drop Point	89	43° 13.365' N	122° 42.332' W
Drop Point	65	43° 15.680' N	122° 25.696' W	Drop Point	88	43° 12.859' N	122° 41.906' W
Drop Point	66	43° 18.022' N	122° 23.080' W	Drop Point	86	43° 13.492' N	122° 41.076' W
Helispot	3	43° 23.838' N	122° 31.292' W	Water Source		43° 17.830' N	122° 42.865' W
Value at Risk	1	43° 20.680' N	122° 40.761' W	Dozer Push		43° 13.607' N	122° 41.779' W
Safety Zone	1	43° 17.631' N	122° 34.596' W	Water Source		43° 13.318' N	122° 44.044' W
Drop Point	71	43° 17.259' N	122° 33.201' W	Repeater	CHD 6	43° 09.815' N	122° 48.324' W
Mobile Weather Unit	31	43° 19.080' N	122° 33.557' W	Camp		43° 12.990' N	122° 43.348' W
Repeater	31	43° 17.259' N	122° 33.413' W	Mobile Retardant Base	Gel Plant	43° 14.173' N	122° 41.577' W
Repeater	CHD 8	43° 13.434' N	122° 36.093' W	Helispot	13	43° 14.939' N	122° 34.689' W
Division Break	Div S	43° 11.001' N	122° 28.963' W	Drop Point	70	43° 13.440' N	122° 34.727' W
Division Break	Div R	43° 11.362' N	122° 28.803' W	Drop Point	73	43° 13.607' N	122° 37.249' W
Division Break	Div P	43° 16.759' N	122° 44.350' W	Drop Point	74	43° 15.667' N	122° 36.362' W
Drop Point	96	43° 18.174' N	122° 40.852' W	Sling Site		43° 14.706' N	122° 36.013' W
Drop Point	71	43° 11.027' N	122° 29.608' W	Helispot	12	43° 14.845' N	122° 36.043' W
Drop Point	9	43° 16.507' N	122° 43.863' W	Helispot	47	43° 14.365' N	122° 43.373' W
Drop Point	61	43° 17.440' N	122° 33.885' W	Culvert		43° 18.950' N	122° 34.185' W

43° 09.99' N 122° 54.00' W



122° 54.00' W 122° 53.50' W 122° 53.00' W 122° 52.50' W 122° 52.00' W 122° 51.50' W 122° 51.00' W 122° 50.50' W 122° 50.00' W 122° 49.50' W 122° 49.00' W 122° 48.50' W 122° 48.00' W 122° 47.50' W 122° 47.00' W 122° 46.50' W 122° 46.00' W 122° 45.50' W 122° 45.00' W 122° 44.50' W 122° 44.00' W 122° 43.50' W 122° 43.00' W 122° 42.50' W 122° 42.00' W 122° 41.50' W 122° 41.00' W 122° 40.50' W 122° 40.00' W 122° 39.50' W 122° 39.00' W 122° 38.50' W 122° 38.00' W 122° 37.50' W 122° 37.00' W 122° 36.50' W 122° 36.00' W 122° 35.50' W 122° 35.00' W 122° 34.50' W 122° 34.00' W 122° 33.50' W 122° 33.00' W 122° 32.50' W 122° 32.00' W 122° 31.50' W 122° 31.00' W 122° 30.50' W 122° 30.00' W 122° 29.50' W 122° 29.00' W 122° 28.50' W 122° 28.00' W 122° 27.50' W 122° 27.00' W 122° 26.50' W 122° 26.00' W 122° 25.50' W 122° 25.00' W 122° 24.50' W 122° 24.00' W 122° 23.50' W 122° 23.00' W

43° 09.99' N 43° 10.00' N 43° 10.01' N 43° 10.02' N 43° 10.03' N 43° 10.04' N 43° 10.05' N 43° 10.06' N 43° 10.07' N 43° 10.08' N 43° 10.09' N 43° 10.10' N 43° 10.11' N 43° 10.12' N 43° 10.13' N 43° 10.14' N 43° 10.15' N 43° 10.16' N 43° 10.17' N 43° 10.18' N 43° 10.19' N 43° 10.20' N 43° 10.21' N 43° 10.22' N 43° 10.23' N 43° 10.24' N 43° 10.25' N 43° 10.26' N 43° 10.27' N 43° 10.28' N 43° 10.29' N 43° 10.30' N 43° 10.31' N 43° 10.32' N 43° 10.33' N 43° 10.34' N 43° 10.35' N 43° 10.36' N 43° 10.37' N 43° 10.38' N 43° 10.39' N 43° 10.40' N 43° 10.41' N 43° 10.42' N 43° 10.43' N 43° 10.44' N 43° 10.45' N 43° 10.46' N 43° 10.47' N 43° 10.48' N 43° 10.49' N 43° 10.50' N 43° 10.51' N 43° 10.52' N 43° 10.53' N 43° 10.54' N 43° 10.55' N 43° 10.56' N 43° 10.57' N 43° 10.58' N 43° 10.59' N 43° 10.60' N 43° 10.61' N 43° 10.62' N 43° 10.63' N 43° 10.64' N 43° 10.65' N 43° 10.66' N 43° 10.67' N 43° 10.68' N 43° 10.69' N 43° 10.70' N 43° 10.71' N 43° 10.72' N 43° 10.73' N 43° 10.74' N 43° 10.75' N 43° 10.76' N 43° 10.77' N 43° 10.78' N 43° 10.79' N 43° 10.80' N 43° 10.81' N 43° 10.82' N 43° 10.83' N 43° 10.84' N 43° 10.85' N 43° 10.86' N 43° 10.87' N 43° 10.88' N 43° 10.89' N 43° 10.90' N 43° 10.91' N 43° 10.92' N 43° 10.93' N 43° 10.94' N 43° 10.95' N 43° 10.96' N 43° 10.97' N 43° 10.98' N 43° 10.99' N 43° 11.00' N

122° 23.50' W 122° 23.00' W 122° 22.50' W 122° 22.00' W 122° 21.50' W 122° 21.00' W 122° 20.50' W 122° 20.00' W 122° 19.50' W 122° 19.00' W 122° 18.50' W 122° 18.00' W 122° 17.50' W 122° 17.00' W 122° 16.50' W 122° 16.00' W 122° 15.50' W 122° 15.00' W 122° 14.50' W 122° 14.00' W 122° 13.50' W 122° 13.00' W 122° 12.50' W 122° 12.00' W 122° 11.50' W 122° 11.00' W 122° 10.50' W 122° 10.00' W 122° 9.50' W 122° 9.00' W 122° 8.50' W 122° 8.00' W 122° 7.50' W 122° 7.00' W 122° 6.50' W 122° 6.00' W 122° 5.50' W 122° 5.00' W 122° 4.50' W 122° 4.00' W 122° 3.50' W 122° 3.00' W 122° 2.50' W 122° 2.00' W 122° 1.50' W 122° 1.00' W 122° 0.50' W 122° 0.00' W