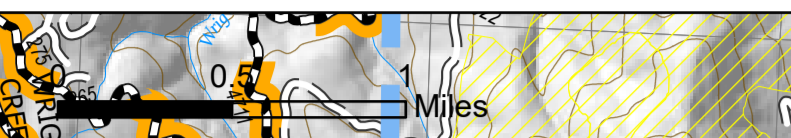
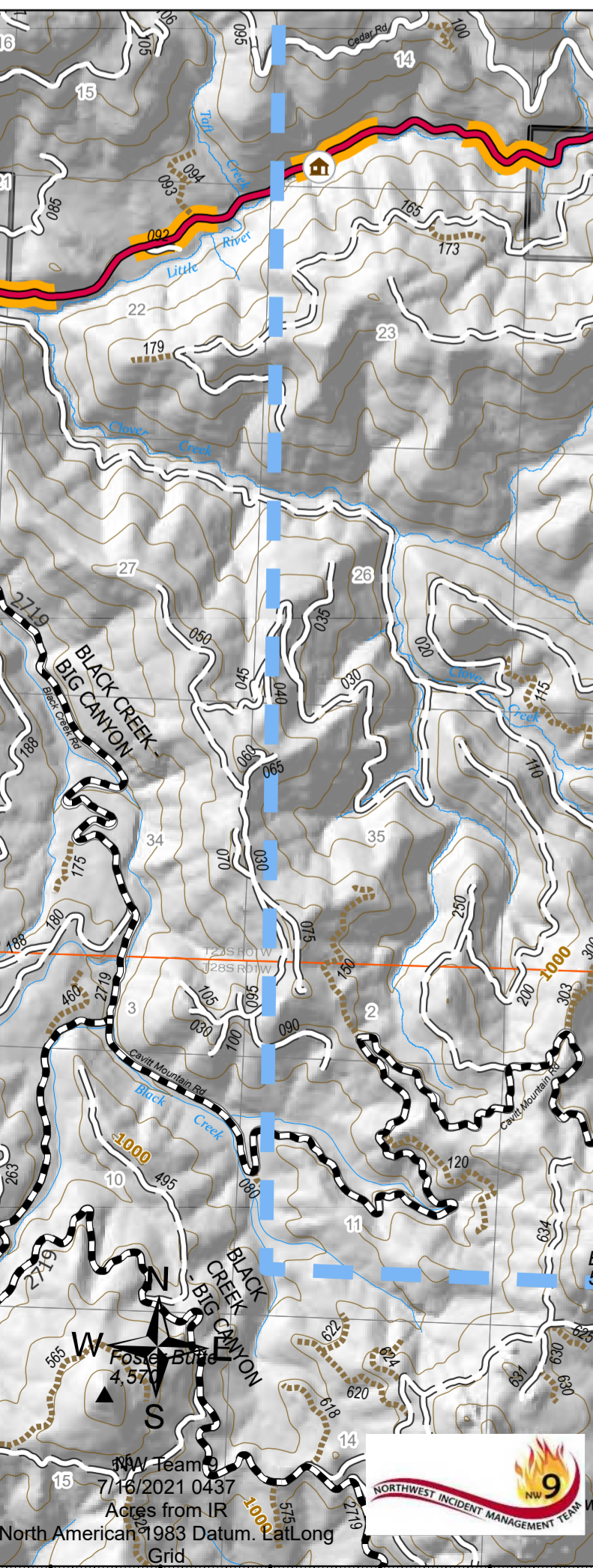


Operations Map
Div R/S/Q
 Jack Fire
 OR-UPF-000265
 07/16/2021 - 24hr
 16667 acres as of 07/15/2021 2220



- ▲ Summit
- ▲ JackFireStructures_pt
- ◆ ATP
- ⊕ Pump
- ⊕ Water Tank
- ⊕ Dip Site
- ⊕ Mobile Retardant Base
- ⊕ Helispot
- ⊕ Sling Site
- ⊕ Division Break
- ⊕ Branch Break
- ⊕ Drop Point
- ⊕ Camp
- ⊕ Value at Risk
- ⊕ Bridge
- ⊕ Structure Wrap
- ⊕ Repair Point
- ⊕ Dozer Push
- ⊕ Culvert
- ⊕ Mobile Weather Unit
- ⊕ Repeater
- ⊕ Safety Zone
- ⊕ Water Source
- ⊕ Completed Dozer Line
- ⊕ Completed Hand Line
- ⊕ Completed Road as Line
- ⊕ Unspecified
- ⊕ Planned Dozer Line
- ⊕ Planned Hand Line
- ⊕ Planned Road as Line
- ⊕ Temporary Flight Restriction
- ⊕ Fire Edge
- ⊕ Contained Line
- ⊕ Wildfire Daily Fire Perimeter
- ⊕ Contours 100ft
- ⊕ Utility Power Lines
- ⊕ Roadless Areas Inventoried
- ⊕ Timber Sale

- ▭ Area to Protect (ATP)
- ▭ Land Ownership
- ▭ PV
- ▭ <all other values>
- ▭ Forest Service Land
- ▭ Wilderness
- ▭ Protracted Section
- ▭ Section
- ▭ Township
- ▭ HIFLD Roads
- ▭ Primary Highway
- ▭ Secondary Highway
- ▭ Paved Roads
- ▭ Dirt (Not Paved)
- ▭ Interstate Not Paved
- ▭ US Route Not Paved
- ▭ Road
- ▭ A - Arterial
- ▭ C - Collector
- ▭ Forest Service Roads
- ▭ Paved Road
- ▭ Gravel Road
- ▭ Dirt Roads
- ▭ Unimproved Roads
- ▭ Unspecified
- ▭ <all other values>
- ▭ NHDWaterbody
- ▭ Lake / Pond
- ▭ Lake / Pond (Intermittent)
- ▭ Reservoir
- ▭ NHDFlowline
- ▭ Stream/River
- ▭ Area Closure



- ▭ FC Point Type
- ▭ Label
- ▭ Latitude WGS84
- ▭ Longitude WGS84
- ▭ FC Point Type
- ▭ Label
- ▭ Latitude WGS84
- ▭ Longitude WGS84
- ▭ FC Point Type
- ▭ Label
- ▭ Latitude WGS84
- ▭ Longitude WGS84

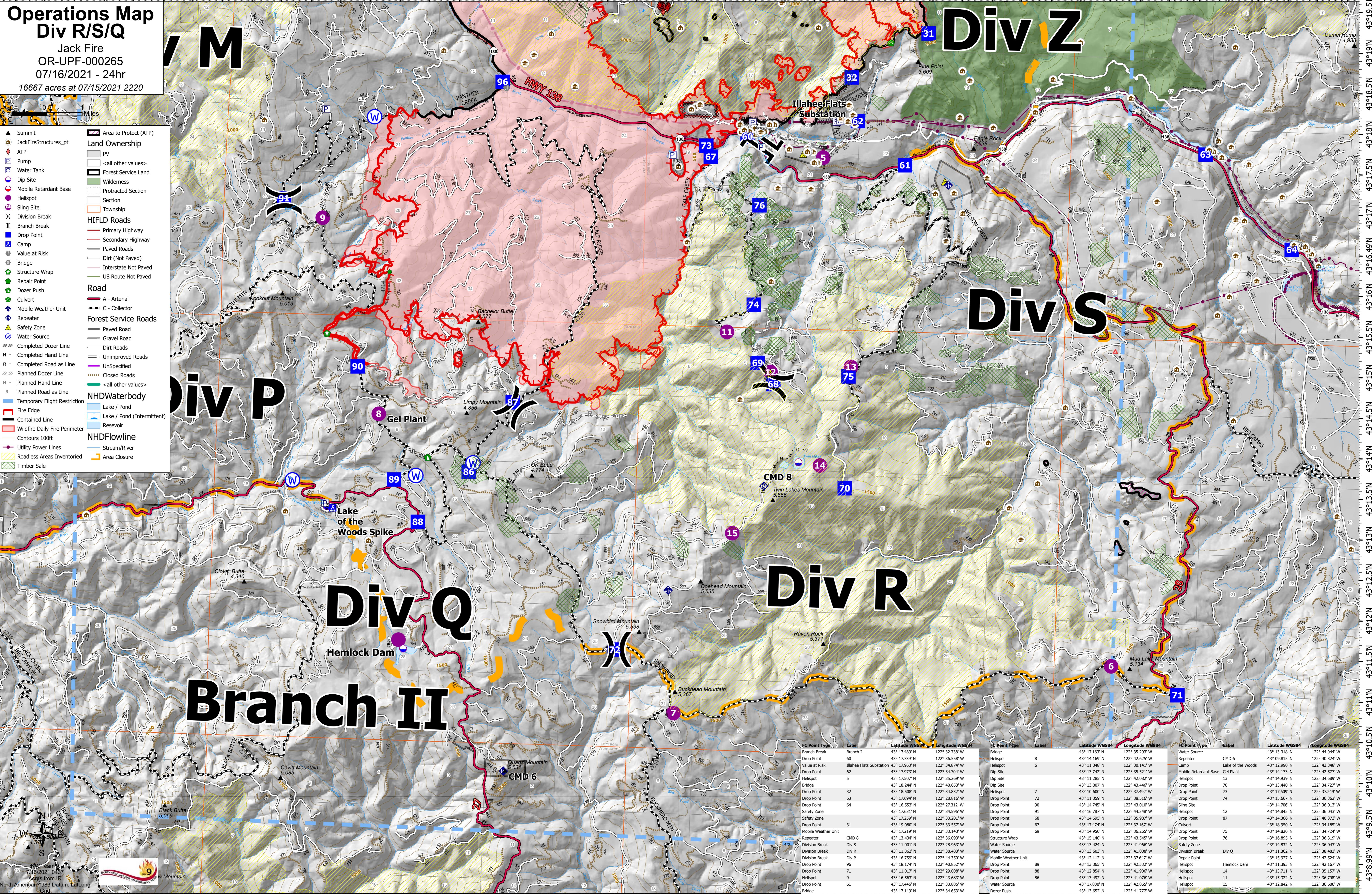
North American 1983 Datum, East Long Grid

FC Point Type	Label	Latitude WGS84	Longitude WGS84
Branch Break	Branch I	43° 17.489' N	122° 32.738' W
Drop Point	60	43° 14.169' N	122° 36.558' W
Value at Risk	Illahee Flats Substation	43° 17.963' N	122° 34.874' W
Drop Point	62	43° 12.973' N	122° 34.704' W
Helispot	5	43° 17.507' N	122° 35.269' W
Bridge		43° 18.244' N	122° 40.653' W
Drop Point	32	43° 18.508' N	122° 34.832' W
Drop Point	63	43° 17.694' N	122° 28.816' W
Drop Point	64	43° 16.553' N	122° 27.312' W
Safety Zone		43° 17.631' N	122° 34.596' W
Safety Zone		43° 17.259' N	122° 33.201' W
Drop Point	31	43° 19.080' N	122° 33.557' W
Mobile Weather Unit		43° 17.219' N	122° 33.143' W
Repeater	CMD 8	43° 13.434' N	122° 36.093' W
Division Break	Div S	43° 11.001' N	122° 28.963' W
Division Break	Div R	43° 11.362' N	122° 38.483' W
Division Break	Div P	43° 16.759' N	122° 44.350' W
Drop Point	96	43° 18.714' N	122° 40.852' W
Drop Point	71	43° 11.017' N	122° 29.008' W
Helispot	9	43° 16.563' N	122° 43.683' W
Drop Point	61	43° 17.446' N	122° 33.885' W
Bridge		43° 17.149' N	122° 34.653' W

FC Point Type	Label	Latitude WGS84	Longitude WGS84
Bridge		43° 17.163' N	122° 35.293' W
Helispot	8	43° 14.169' N	122° 42.625' W
Helispot	6	43° 11.348' N	122° 30.141' W
Dip Site		43° 13.742' N	122° 35.521' W
Dip Site		43° 11.285' N	122° 42.082' W
Dip Site		43° 13.007' N	122° 43.446' W
Helispot	7	43° 10.600' N	122° 37.869' W
Drop Point	72	43° 11.359' N	122° 38.510' W
Drop Point	90	43° 14.745' N	122° 43.010' W
Drop Point	91	43° 16.787' N	122° 44.348' W
Drop Point	68	43° 14.695' N	122° 35.987' W
Drop Point	67	43° 17.474' N	122° 37.167' W
Drop Point	69	43° 14.950' N	122° 36.265' W
Structure Wrap		43° 15.140' N	122° 43.545' W
Water Source		43° 13.424' N	122° 41.966' W
Water Source		43° 13.603' N	122° 41.008' W
Mobile Weather Unit		43° 10.600' N	122° 37.869' W
Drop Point	89	43° 13.365' N	122° 42.332' W
Drop Point	88	43° 12.854' N	122° 41.906' W
Drop Point	86	43° 14.976' N	122° 41.076' W
Water Source		43° 17.830' N	122° 42.865' W
Dozer Push		43° 17.652' N	122° 41.777' W

FC Point Type	Label	Latitude WGS84	Longitude WGS84
Water Source		43° 13.318' N	122° 44.044' W
Repeater	CMD 6	43° 09.815' N	122° 40.324' W
Camp	Lake of the Woods	43° 12.990' N	122° 43.348' W
Mobile Retardant Base	Gel Plant	43° 14.173' N	122° 42.577' W
Helispot	13	43° 14.939' N	122° 34.689' W
Drop Point	70	43° 13.440' N	122° 34.727' W
Drop Point	73	43° 16.669' N	122° 37.249' W
Drop Point	74	43° 15.667' N	122° 36.362' W
Sling Site		43° 14.706' N	122° 36.013' W
Helispot	12	43° 14.845' N	122° 36.043' W
Drop Point	87	43° 14.366' N	122° 40.373' W
Culvert		43° 18.950' N	122° 34.185' W
Drop Point	75	43° 14.820' N	122° 34.724' W
Drop Point	76	43° 16.895' N	122° 36.319' W
Safety Zone		43° 14.832' N	122° 36.043' W
Division Break	Div Q	43° 11.362' N	122° 38.483' W
Repeater	Hemlock Dam	43° 15.927' N	122° 42.524' W
Helispot		43° 11.392' N	122° 42.167' W
Helispot	11	43° 13.711' N	122° 35.157' W
Helispot	14	43° 15.322' N	122° 36.798' W
Helispot	15	43° 12.842' N	122° 36.600' W

North American 1983 Datum, East Long Grid



North American 1983 Datum, East Long Grid