

Operations Map

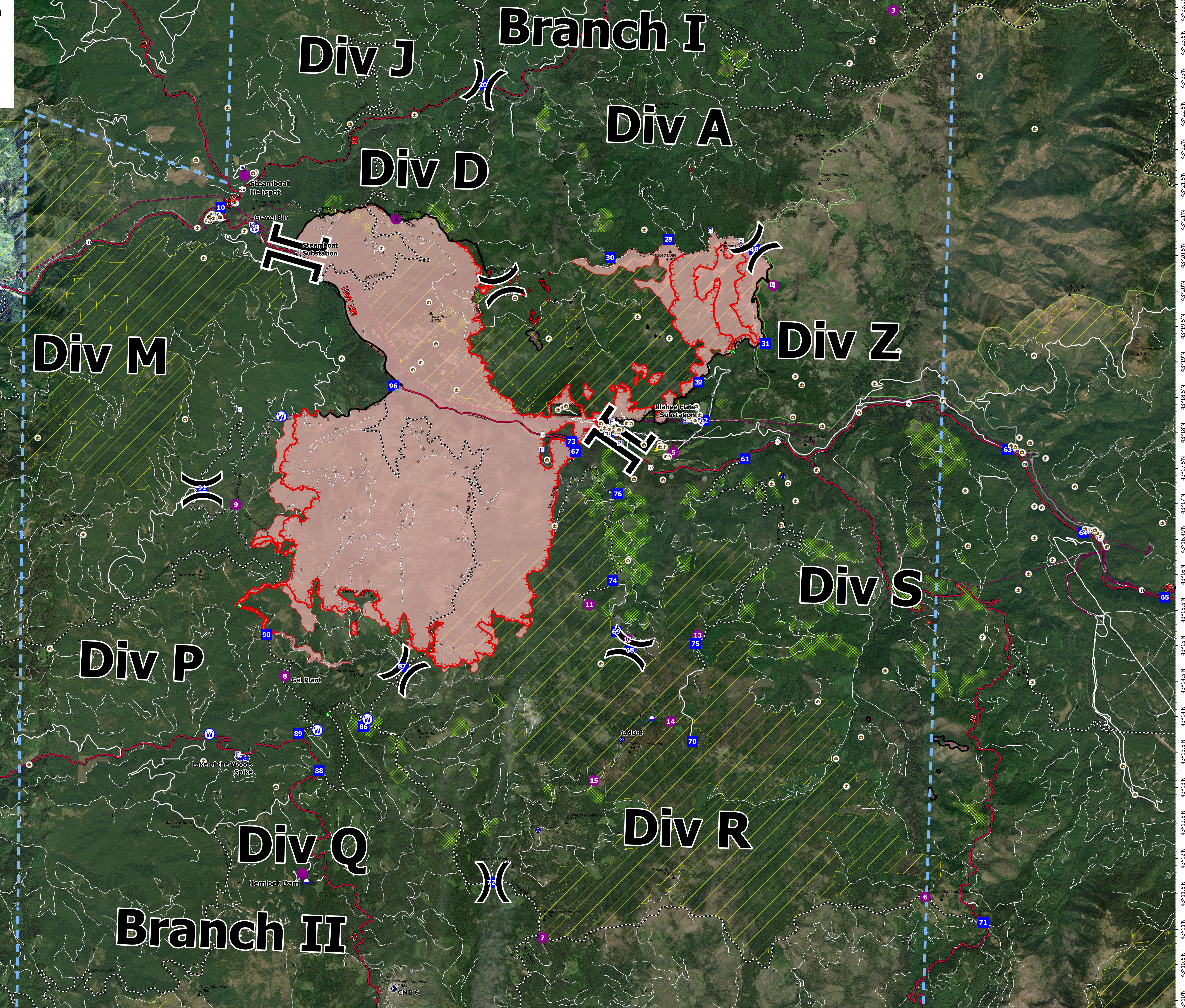
Jack Fire
OR-UPF-000265
07/16/2021 - 24hr
16667 acres at 07/15/2021 2220

- | Symbol | Description |
|--------|------------------------|
| ▲ | Summit |
| ◆ | JackFireStructures_pt |
| ● | ATP |
| ⬜ | Other Property |
| ⊙ | Pump |
| ⊕ | Water Point |
| ⊞ | Check Point |
| ⊟ | Dip Site |
| ⊠ | Mobile Retardant Base |
| ⊡ | Helibase |
| ⊣ | Sling Site |
| ⊤ | Division Break |
| ⊥ | Branch Break |
| ⊦ | Drop Point |
| ⊧ | Camp |
| ⊨ | Value at Risk |
| ⊩ | Bridge |
| ⊪ | Structure Wrap |
| ⊫ | Rappah Point |
| ⊬ | Dozer Push |
| ⊭ | Culvert |
| ⊮ | Mobile Weather Unit |
| ⊯ | Repeater |
| ⊰ | Safety Zone |
| ⊱ | Water Source |
| ⊲ | Completed Hand Line |
| ⊳ | Completed Road as Line |
| ⊴ | Planned Dozer Line |
| ⊵ | Planned Hand Line |
| ⊶ | Planned Road as Line |

- | Symbol | Description |
|--------|-------------------------------|
| ▬ | Retardant Drop |
| ▬ | Temporary Flight Restriction |
| ▬ | Fire Edge |
| ▬ | Contained Line |
| ▬ | Wildfire Daily Fire Perimeter |
| ▬ | Utility Power Lines |
| ▬ | Roadless Areas Inventoried |
| ▬ | Call Units |
| ▬ | CC Alternative_Final Units |
| ▬ | Dry Units |
| ▬ | JackFinal Units |
| ▬ | Area to Protect (ATP) |
| ▬ | Wilderness |
| ▬ | Forest Service Roads |
| ▬ | Paved Road |
| ▬ | Gravel Road |
| ▬ | Dirt Roads |
| ▬ | Unimproved Roads |
| ▬ | UnSpecified |
| ▬ | Closed Roads |
| ▬ | call other values |
| ▬ | HIFLD Roads |
| ▬ | Primary Highway |
| ▬ | Secondary Highway |
| ▬ | Paved Roads |
| ▬ | Dirt (Not Paved) |
| ▬ | Interstate Not Paved |
| ▬ | US Route Not Paved |
| ▬ | A - Arterial |
| ▬ | C - Collector |

Label	Latitude WGS84	Longitude WGS84
Branch I I	43° 26' 14.7" N	122° 42' 48.9" W
Branch I II	43° 26' 14.7" N	122° 42' 48.9" W
Division Break Div A	43° 26' 42.3" N	122° 33' 43.5" W
Division Break Div J	43° 26' 26.7" N	122° 38' 13.8" W
Drop Point 10	43° 27' 27.7" N	122° 36' 33.8" W
Drop Point 38	43° 28' 22.5" N	122° 36' 56.8" W
Drop Point 49	43° 28' 49.5" N	122° 33' 43.7" W
Gravel Bin	43° 28' 49.5" N	122° 33' 43.7" W
Helispot Steamboat Helispot	43° 28' 12.7" N	122° 43' 7.2" W
Helispot Steamboat Substation	43° 28' 12.7" N	122° 43' 7.2" W
Helibase at Risk	43° 28' 12.7" N	122° 43' 7.2" W
Helibase at Risk Steamboat Substation	43° 28' 12.7" N	122° 43' 7.2" W
Drop Point 62	43° 17' 53.5" N	122° 34' 39.4" W
Drop Point 4	43° 17' 53.5" N	122° 34' 39.4" W
Helispot 5	43° 17' 53.5" N	122° 34' 39.4" W
Drop Point 20	43° 25' 46.7" N	122° 39' 38.5" W
Drop Point 29	43° 25' 46.7" N	122° 39' 38.5" W
Drop Point 33	43° 18' 58.9" N	122° 34' 43.2" W
Drop Point 63	43° 22' 20.2" N	122° 28' 51.2" W
Drop Point 64	43° 16' 51.5" N	122° 27' 31.2" W
Drop Point 65	43° 16' 51.5" N	122° 27' 31.2" W
Helispot 3	43° 25' 46.7" N	122° 39' 38.5" W
Helispot 1	43° 25' 46.7" N	122° 39' 38.5" W
Helispot 2	43° 25' 46.7" N	122° 39' 38.5" W
Drop Point 31	43° 12' 25.9" N	122° 33' 20.5" W
Safety Zone	43° 12' 25.9" N	122° 33' 20.5" W
Mobile Weather Unit	43° 12' 25.9" N	122° 33' 20.5" W
Repeater	43° 12' 25.9" N	122° 33' 20.5" W
CHP 8	43° 12' 25.9" N	122° 33' 20.5" W
Division Break Div S	43° 11' 0.5" N	122° 28' 56.7" W
Division Break Div P	43° 11' 0.5" N	122° 28' 56.7" W
Division Break Div Q	43° 11' 0.5" N	122° 28' 56.7" W
Drop Point 71	43° 11' 0.5" N	122° 28' 56.7" W
Drop Point 6	43° 17' 46.6" N	122° 33' 48.5" W
Drop Point 7	43° 17' 46.6" N	122° 33' 48.5" W
Division Break Div D	43° 15' 7.9" N	122° 38' 48.5" W
Bridge 8	43° 11' 4.6" N	122° 34' 43.7" W
Drop Point 19	43° 11' 4.6" N	122° 34' 43.7" W
Helispot 6	43° 11' 4.6" N	122° 34' 43.7" W
Dip Site	43° 12' 26.2" N	122° 35' 32.7" W
Drop Point 7	43° 10' 2.7" N	122° 42' 48.9" W
Drop Point 72	43° 11' 3.9" N	122° 38' 13.8" W
Drop Point 90	43° 12' 7.9" N	122° 43' 07.2" W
Drop Point 91	43° 12' 7.9" N	122° 43' 07.2" W
Drop Point 106	43° 14' 2.9" N	122° 44' 34.8" W
Drop Point 67	43° 17' 41.9" N	122° 37' 18.7" W
Drop Point 69	43° 14' 1.9" N	122° 38' 13.8" W
Water Source	43° 15' 14.7" N	122° 43' 14.9" W
Water Source	43° 13' 4.7" N	122° 41' 49.8" W
Water Source	43° 11' 11.7" N	122° 37' 57.7" W
Water Source	43° 10' 5.2" N	122° 43' 39.5" W
Check Point 3	43° 10' 5.2" N	122° 43' 39.5" W
Drop Point 88	43° 10' 5.2" N	122° 43' 39.5" W
Drop Point 86	43° 10' 5.2" N	122° 43' 39.5" W
Drop Point 85	43° 10' 5.2" N	122° 43' 39.5" W
Drop Point 84	43° 10' 5.2" N	122° 43' 39.5" W
Drop Point 83	43° 10' 5.2" N	122° 43' 39.5" W
Drop Point 79	43° 10' 5.2" N	122° 43' 39.5" W
Drop Point 75	43° 10' 5.2" N	122° 43' 39.5" W
Drop Point 74	43° 10' 5.2" N	122° 43' 39.5" W
Drop Point 73	43° 10' 5.2" N	122° 43' 39.5" W
Helispot 12	43° 14' 4.6" N	122° 38' 13.8" W
Drop Point 87	43° 18' 5.9" N	122° 34' 18.5" W
Culvert	43° 18' 5.9" N	122° 34' 18.5" W
Drop Point 76	43° 18' 5.9" N	122° 34' 18.5" W
Drop Point 74	43° 18' 5.9" N	122° 34' 18.5" W
Safety Zone	43° 14' 4.6" N	122° 38' 13.8" W
Division Break Div Q	43° 11' 4.6" N	122° 34' 43.7" W
Rappah Point	43° 10' 5.2" N	122° 43' 39.5" W
Helispot 14	43° 10' 5.2" N	122° 43' 39.5" W
Helispot 11	43° 10' 5.2" N	122° 43' 39.5" W

43° 10' 5.2" N 122° 43' 39.5" W



122° 52' W 122° 50' W 122° 48' W 122° 47' W 122° 46' W 122° 45' W 122° 44' W 122° 43' W 122° 42' W 122° 41' W 122° 40' W 122° 39' W 122° 38' W 122° 37' W 122° 36' W 122° 35' W 122° 34' W 122° 33' W 122° 32' W 122° 31' W 122° 30' W 122° 29' W 122° 28' W 122° 27' W 122° 26' W 122° 25' W