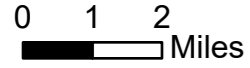


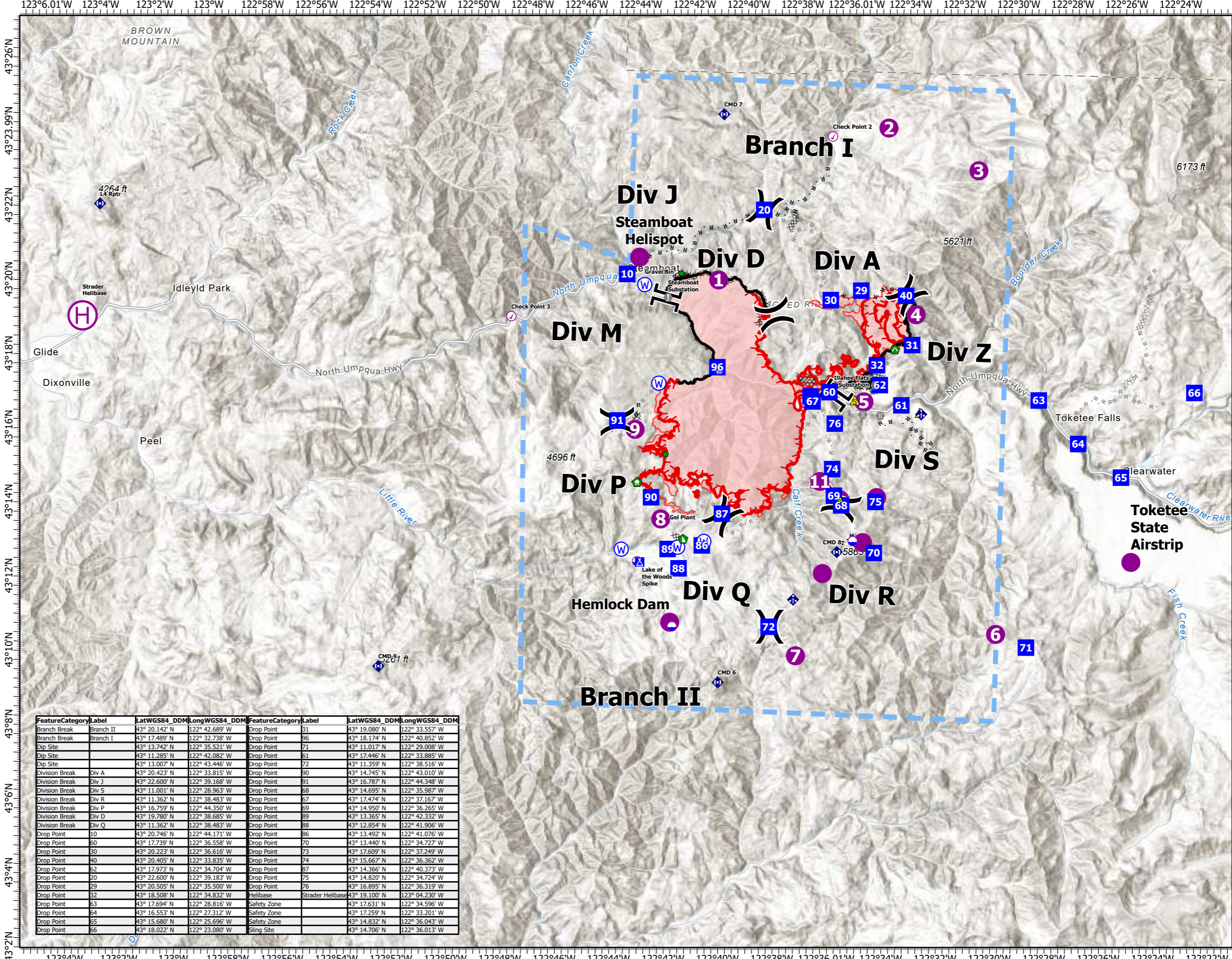
# Pilots Map

Jack Fire  
OR-UPF-000265  
07/16/2021 - 24hr

16667 acres at 07/15/2021 2220



- ▬ Wildfire Daily Fire Perimeter
- XX Completed Dozer Line
- H Completed Hand Line
- R Completed Road as Line
- XX Planned Dozer Line
- H Planned Hand Line
- R Planned Road as Line
- ▬ Retardant Drop
- ▬ Temporary Flight Restriction
- ▬ Fire Edge
- ▬ Contained Line
- Check Point
- Dip Site
- Mobile Retardant Base
- ⊕ Helibase
- ⊕ Sling Site
- X Division Break
- || Branch Break
- ▬ Incident Command Post
- ▬ Drop Point
- ⊕ Camp
- ⊕ Value at Risk
- ⊕ Bridge
- ⊕ Structure Wrap
- ⊕ Repair Point
- ⊕ Dozer Push
- ⊕ Culvert
- ⊕ Mobile Weather Unit
- ⊕ Repeater
- ⊕ Safety Zone
- ⊕ Water Source



FeatureCategory	Label	LatWGS84_DDM	LongWGS84_DDM	FeatureCategory	Label	LatWGS84_DDM	LongWGS84_DDM
Branch Break	Branch II	43° 20.142' N	122° 42.689' W	Drop Point	31	43° 19.080' N	122° 33.557' W
Branch Break	Branch I	43° 17.489' N	122° 32.738' W	Drop Point	96	43° 18.174' N	122° 40.852' W
Dip Site		43° 13.742' N	122° 35.521' W	Drop Point	71	43° 11.017' N	122° 29.008' W
Dip Site		43° 11.285' N	122° 42.082' W	Drop Point	61	43° 17.446' N	122° 33.885' W
Dip Site		43° 13.007' N	122° 43.446' W	Drop Point	72	43° 11.359' N	122° 38.516' W
Division Break	Div A	43° 20.423' N	122° 33.815' W	Drop Point	90	43° 14.745' N	122° 43.010' W
Division Break	Div J	43° 22.600' N	122° 39.168' W	Drop Point	91	43° 16.787' N	122° 44.348' W
Division Break	Div S	43° 11.001' N	122° 28.963' W	Drop Point	68	43° 14.695' N	122° 35.987' W
Division Break	Div R	43° 11.362' N	122° 38.483' W	Drop Point	67	43° 17.474' N	122° 37.167' W
Division Break	Div P	43° 16.759' N	122° 44.350' W	Drop Point	69	43° 14.950' N	122° 36.265' W
Division Break	Div D	43° 19.780' N	122° 38.685' W	Drop Point	89	43° 13.365' N	122° 42.332' W
Division Break	Div Q	43° 11.362' N	122° 38.483' W	Drop Point	88	43° 12.854' N	122° 41.906' W
Drop Point	10	43° 20.746' N	122° 44.171' W	Drop Point	86	43° 13.492' N	122° 41.076' W
Drop Point	60	43° 17.739' N	122° 36.558' W	Drop Point	70	43° 13.440' N	122° 34.727' W
Drop Point	30	43° 20.223' N	122° 36.616' W	Drop Point	73	43° 17.609' N	122° 37.249' W
Drop Point	40	43° 20.405' N	122° 33.835' W	Drop Point	74	43° 15.667' N	122° 36.362' W
Drop Point	62	43° 17.973' N	122° 34.704' W	Drop Point	87	43° 14.366' N	122° 40.373' W
Drop Point	20	43° 22.600' N	122° 39.183' W	Drop Point	75	43° 14.820' N	122° 34.724' W
Drop Point	29	43° 20.505' N	122° 35.500' W	Drop Point	76	43° 16.895' N	122° 36.319' W
Drop Point	32	43° 18.508' N	122° 34.832' W	Helibase	Strader Helibase	43° 19.100' N	123° 04.230' W
Drop Point	63	43° 17.694' N	122° 28.816' W	Safety Zone		43° 17.631' N	122° 34.596' W
Drop Point	64	43° 16.553' N	122° 27.312' W	Safety Zone		43° 17.259' N	122° 33.201' W
Drop Point	65	43° 15.680' N	122° 25.696' W	Safety Zone		43° 14.832' N	122° 36.043' W
Drop Point	66	43° 18.022' N	122° 23.080' W	Sling Site		43° 14.706' N	122° 36.013' W



NW Team 9  
7/16/2021 0529  
Acres from IR  
North American 1983 Datum. LatLong Grid