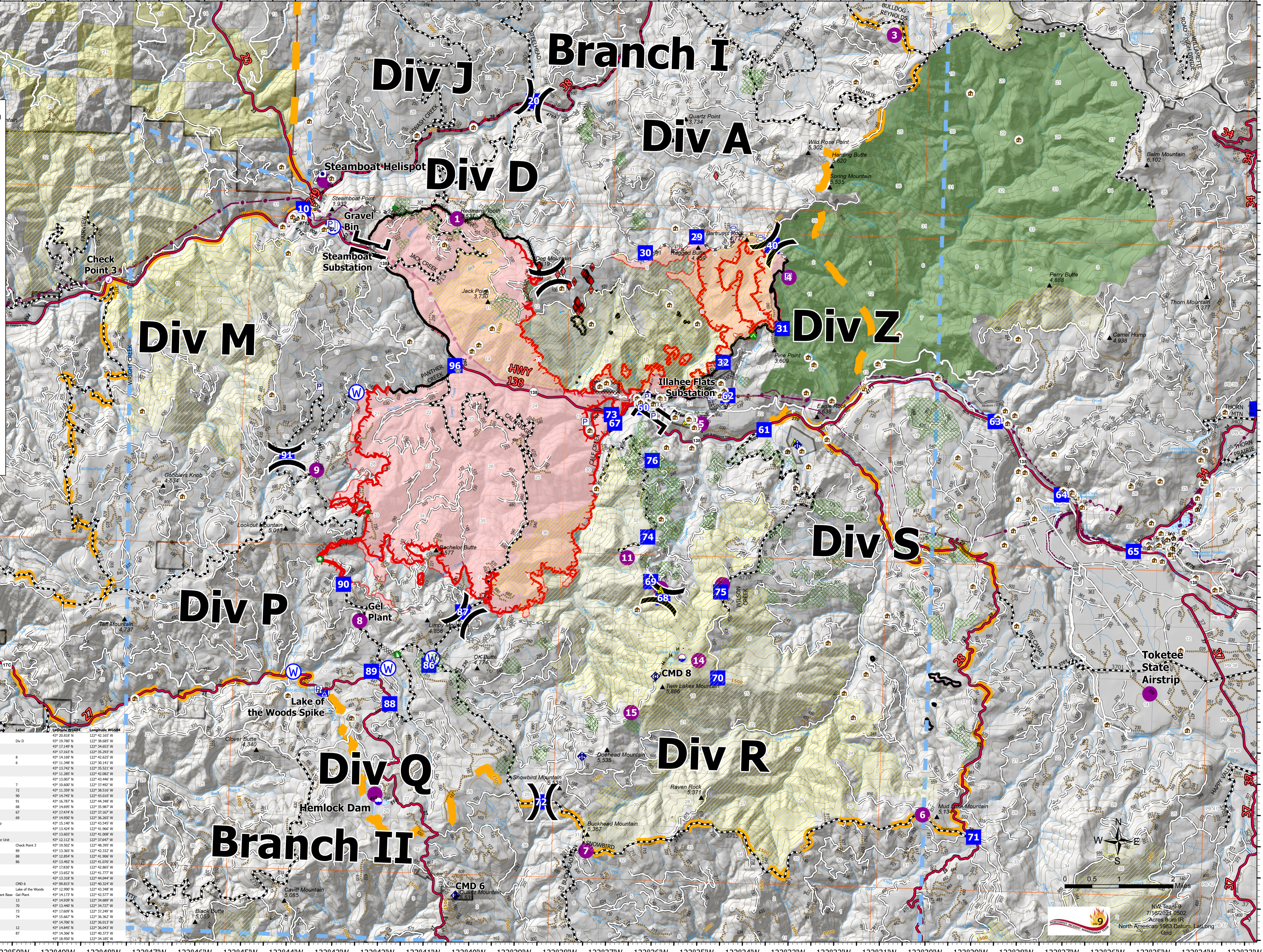


Operations Map
 Jack Fire
 OR-UPF-000265
 07/16/2021 - 24hr
 16667 acres as of 07/15/2021 2220

▲ Summit	Area Closure
JackFireStructures_pt	Roadless Areas Inventoried
ATP	Timber Sale
Other Property	Area to Protect (ATP)
Pump	Land Ownership
Water Tank	BLM
Check Point	PV
Dip Site	<all other values>
Mobile Retardant Base	Forest Service Land
Helispot	Wilderness
Sling Site	Protracted Section
Division Break	Section
Branch Break	Township
Drop Point	HIFLD Roads
Camp	Primary Highway
Value at Risk	Secondary Highway
Bridge	Paved Roads
Structure Wrap	Dirt (Not Paved)
Repair Point	Interstate Not Paved
Dozer Push	US Route Not Paved
Culvert	A - Arterial
Mobile Weather Unit	C - Collector
Repeater	Forest Service Roads
Safety Zone	Paved Road
Water Source	Gravel Road
Completed Dozer Line	Dirt Roads
H - Completed Hand Line	Unimproved Roads
R - Completed Road as Line	Unspecified
Planned Dozer Line	Closed Roads
H - Planned Hand Line	<all other values>
R - Planned Road as Line	NHDWaterbody
Retardant Drop	Temporary Flight Restriction
Fire Edge	Lake / Pond (Intermittent)
Contained Line	Reservoir
Wildfire Daily Fire Perimeter	NHDFlowline
Utility Power Lines	Stream/River
Contours 100ft	

FC Point Type	Label	Latitude WGS84	Longitude WGS84	FC Point Type	Label	Latitude WGS84	Longitude WGS84
Branch Break	Branch II	43° 20.142' N	122° 42.687' W	Repair Point	Repair	43° 20.818' N	122° 42.165' W
Branch Break	Branch I	43° 17.487' N	122° 32.787' W	Division Break	Div D	43° 17.149' N	122° 34.653' W
Division Break	Div A	43° 20.423' N	122° 33.815' W	Bridge		43° 17.183' N	122° 35.299' W
Drop Point	60	43° 20.942' N	122° 44.711' W	Helispot	6	43° 14.659' N	122° 43.527' W
Drop Point	60	43° 17.239' N	122° 36.558' W	Helispot	6	43° 13.348' N	122° 38.141' W
Drop Point	30	43° 20.223' N	122° 36.616' W	Dip Site		43° 13.742' N	122° 35.521' W
Drop Point	40	43° 20.405' N	122° 33.853' W	Dip Site		43° 11.285' N	122° 42.982' W
Gravel Bin	Gravel Bin	43° 20.471' N	122° 45.507' W	Dip Site		43° 13.007' N	122° 41.962' W
Helispot	Steamboat Helispot	43° 21.210' N	122° 43.730' W	Helispot	7	43° 10.600' N	122° 37.492' W
Helispot		43° 13.40' N	122° 25.23' W	Drop Point	72	43° 11.359' N	122° 38.516' W
Value at Risk	Tolakee State Airstrip	43° 20.152' N	122° 42.828' W	Drop Point	90	43° 14.745' N	122° 41.010' W
Value at Risk	Illahee Flats Substation	43° 17.963' N	122° 34.914' W	Drop Point	91	43° 15.787' N	122° 44.348' W
Drop Point	62	43° 17.973' N	122° 34.704' W	Drop Point	68	43° 14.695' N	122° 35.987' W
Helispot	4	43° 19.902' N	122° 33.444' W	Drop Point	67	43° 17.474' N	122° 37.167' W
Helispot	5	43° 17.907' N	122° 35.567' W	Drop Point	69	43° 14.950' N	122° 36.265' W
Bridge	5	43° 18.244' N	122° 40.653' W	Structure Wrap		43° 15.140' N	122° 43.545' W
Drop Point	20	43° 22.600' N	122° 39.183' W	Water Source		43° 13.424' N	122° 41.966' W
Drop Point	29	43° 20.591' N	122° 35.200' W	Water Source		43° 13.603' N	122° 41.008' W
Drop Point	32	43° 18.508' N	122° 34.832' W	Mobile Weather Unit		43° 12.112' N	122° 37.647' W
Drop Point	63	43° 17.694' N	122° 28.816' W	Check Point	Check Point 3	43° 19.502' N	122° 48.395' W
Drop Point	64	43° 16.537' N	122° 27.312' W	Drop Point	89	43° 13.365' N	122° 43.332' W
Drop Point	65	43° 15.964' N	122° 25.696' W	Drop Point	88	43° 12.858' N	122° 43.906' W
Drop Point	66	43° 18.022' N	122° 23.080' W	Drop Point	86	43° 13.492' N	122° 41.076' W
Helispot	3	43° 23.838' N	122° 31.292' W	Water Source		43° 17.830' N	122° 42.865' W
Helispot	1	43° 20.687' N	122° 43.717' W	Dozer Push		43° 13.602' N	122° 41.779' W
Safety Zone	1	43° 17.631' N	122° 34.596' W	Water Source		43° 13.318' N	122° 44.044' W
Safety Zone		43° 17.259' N	122° 33.201' W	Repeater	CMD 6	43° 09.815' N	122° 48.324' W
Drop Point	31	43° 19.090' N	122° 33.557' W	Camp	Lake of the Woods	43° 12.990' N	122° 43.348' W
Mobile Weather Unit		43° 17.218' N	122° 33.415' W	Mobile Retardant Base	Gal Pans	43° 14.173' N	122° 43.577' W
Repeater	CMD 8	43° 13.434' N	122° 36.093' W	Helispot	13	43° 14.939' N	122° 34.689' W
Division Break	Div S	43° 11.001' N	122° 28.963' W	Drop Point	70	43° 13.440' N	122° 34.727' W
Division Break	Div R	43° 11.367' N	122° 28.463' W	Drop Point	73	43° 13.607' N	122° 33.449' W
Division Break	Div P	43° 16.759' N	122° 44.350' W	Drop Point	74	43° 15.667' N	122° 36.362' W
Drop Point	96	43° 18.174' N	122° 40.852' W	Sling Site		43° 14.706' N	122° 36.013' W
Drop Point	71	43° 11.027' N	122° 29.608' W	Helispot	12	43° 14.845' N	122° 36.043' W
Helispot	9	43° 16.957' N	122° 43.883' W	Drop Point	87	43° 14.365' N	122° 43.373' W
Drop Point	61	43° 17.440' N	122° 33.885' W	Culvert		43° 18.950' N	122° 34.185' W

43° 09.99' N



122°54'W 122°53'W 122°52'W 122°51.01'W 122°50'W 122°49'W 122°48'W 122°47'W 122°46'W 122°45'W 122°44'W 122°43'W 122°42'W 122°41'W 122°40'W 122°39'W 122°38'W 122°37'W 122°36'W 122°35'W 122°34'W 122°33'W 122°32'W 122°31'W 122°30'W 122°29'W 122°28'W 122°27'W 122°26'W 122°25'W 122°24'W 122°23'W

43° 17'N 43° 16'N 43° 15'N 43° 14'N 43° 13'N 43° 12'N 43° 11'N 43° 10'N 43° 9'N 43° 8'N 43° 7'N 43° 6'N 43° 5'N 43° 4'N 43° 3'N 43° 2'N 43° 1'N 43° 0'N