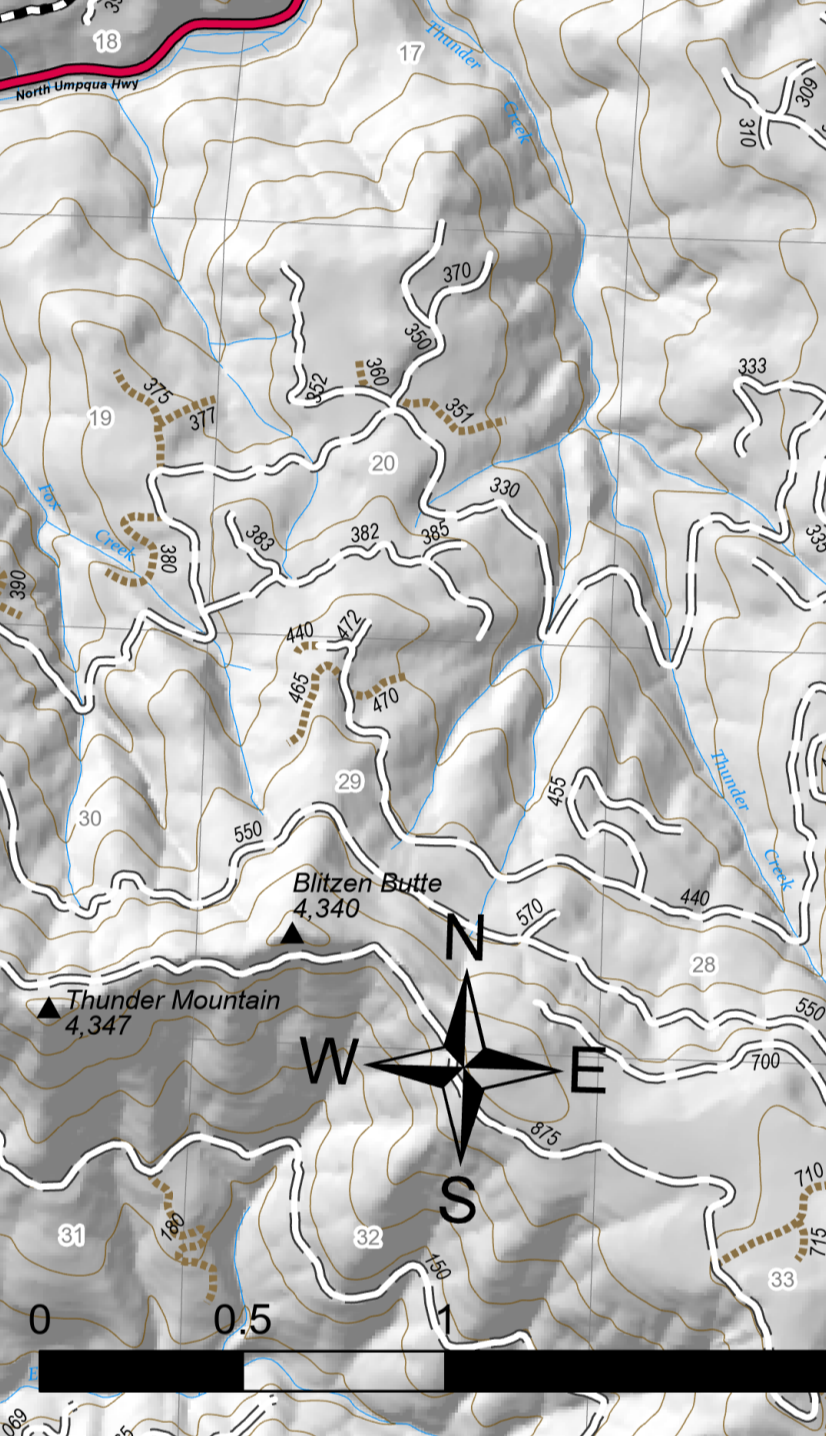


Operations Map

Jack Fire
OR-UPF-000265
07/16/2021 - 24hr
16667 acres at 07/15/2021 2220

- Summit
- JackFireStructures_pt
- ATP
- Other Property
- Water Tank
- Check Point
- Dip Site
- Mobile Retardant Base
- Helispot
- Sling Site
- Division Break
- Branch Break
- Drop Point
- Camp
- Value at Risk
- Bridge
- Structure Wrap
- Repair Point
- Dozer Push
- Culvert
- Mobile Weather Unit
- Repeater
- Safety Zone
- Water Source
- Completed Dozer Line
- H - Completed Hand Line
- H - Planned Dozer Line
- H - Planned Hand Line
- R - Retardant Drop
- Temporary Flight Restriction
- Fire Edge
- Contained Line
- Wildfire Daily Fire Perimeter
- Area Closure
- Utility Power Lines
- Contours 100ft
- Roadless Areas Inventoried
- Timber Sale
- Area to Protect (ATP)
- Land Ownership
- BLM
- PV
- <all other values>
- Wilderness
- Protracted Section
- Section
- Township
- HIFLD Roads
- Primary Highway
- Secondary Highway
- Paved Road
- Dirt (Not Paved)
- Interstate Not Paved
- US Route Not Paved
- A - Arterial
- C - Collector
- Forest Service Roads
- Paved Road
- Gravel Road
- Dirt Road
- Unimproved Roads
- Unidentified
- Closed Roads
- <all other values>



NW Team 9
7/16/2021 0607
Acres from IR
North America
Datum: LatLong
Grid



Unit Type	Label	Latitude	Longitude
Branch	Branch I	43° 20' 14.7" N	122° 42' 00.0" W
Branch	Branch II	43° 20' 14.7" N	122° 38' 50.0" W
Division	Div A	43° 20' 42.3" N	122° 33' 00.0" W
Division	Div B	43° 20' 42.3" N	122° 36' 00.0" W
Division	Div C	43° 20' 42.3" N	122° 39' 00.0" W
Division	Div D	43° 20' 42.3" N	122° 42' 00.0" W
Division	Div E	43° 20' 42.3" N	122° 45' 00.0" W
Division	Div F	43° 20' 42.3" N	122° 48' 00.0" W
Division	Div G	43° 20' 42.3" N	122° 51' 00.0" W
Division	Div H	43° 20' 42.3" N	122° 54' 00.0" W
Division	Div I	43° 20' 42.3" N	122° 57' 00.0" W
Division	Div J	43° 20' 42.3" N	123° 00' 00.0" W
Division	Div K	43° 20' 42.3" N	123° 03' 00.0" W
Division	Div L	43° 20' 42.3" N	123° 06' 00.0" W
Division	Div M	43° 20' 42.3" N	123° 09' 00.0" W
Division	Div N	43° 20' 42.3" N	123° 12' 00.0" W
Division	Div O	43° 20' 42.3" N	123° 15' 00.0" W
Division	Div P	43° 20' 42.3" N	123° 18' 00.0" W
Division	Div Q	43° 20' 42.3" N	123° 21' 00.0" W
Division	Div R	43° 20' 42.3" N	123° 24' 00.0" W
Division	Div S	43° 20' 42.3" N	123° 27' 00.0" W
Division	Div T	43° 20' 42.3" N	123° 30' 00.0" W
Division	Div U	43° 20' 42.3" N	123° 33' 00.0" W
Division	Div V	43° 20' 42.3" N	123° 36' 00.0" W
Division	Div W	43° 20' 42.3" N	123° 39' 00.0" W
Division	Div X	43° 20' 42.3" N	123° 42' 00.0" W
Division	Div Y	43° 20' 42.3" N	123° 45' 00.0" W
Division	Div Z	43° 20' 42.3" N	123° 48' 00.0" W
Drop Point	1	43° 20' 14.7" N	122° 42' 00.0" W
Drop Point	2	43° 20' 14.7" N	122° 45' 00.0" W
Drop Point	3	43° 20' 14.7" N	122° 48' 00.0" W
Drop Point	4	43° 20' 14.7" N	122° 51' 00.0" W
Drop Point	5	43° 20' 14.7" N	122° 54' 00.0" W
Drop Point	6	43° 20' 14.7" N	122° 57' 00.0" W
Drop Point	7	43° 20' 14.7" N	122° 59' 00.0" W
Drop Point	8	43° 20' 14.7" N	123° 01' 00.0" W
Drop Point	9	43° 20' 14.7" N	123° 03' 00.0" W
Drop Point	10	43° 20' 14.7" N	123° 05' 00.0" W
Drop Point	11	43° 20' 14.7" N	123° 07' 00.0" W
Drop Point	12	43° 20' 14.7" N	123° 09' 00.0" W
Drop Point	13	43° 20' 14.7" N	123° 11' 00.0" W
Drop Point	14	43° 20' 14.7" N	123° 13' 00.0" W
Drop Point	15	43° 20' 14.7" N	123° 15' 00.0" W
Drop Point	16	43° 20' 14.7" N	123° 17' 00.0" W
Drop Point	17	43° 20' 14.7" N	123° 19' 00.0" W
Drop Point	18	43° 20' 14.7" N	123° 21' 00.0" W
Drop Point	19	43° 20' 14.7" N	123° 23' 00.0" W
Drop Point	20	43° 20' 14.7" N	123° 25' 00.0" W
Drop Point	21	43° 20' 14.7" N	123° 27' 00.0" W
Drop Point	22	43° 20' 14.7" N	123° 29' 00.0" W
Drop Point	23	43° 20' 14.7" N	123° 31' 00.0" W
Drop Point	24	43° 20' 14.7" N	123° 33' 00.0" W
Drop Point	25	43° 20' 14.7" N	123° 35' 00.0" W
Drop Point	26	43° 20' 14.7" N	123° 37' 00.0" W
Drop Point	27	43° 20' 14.7" N	123° 39' 00.0" W
Drop Point	28	43° 20' 14.7" N	123° 41' 00.0" W
Drop Point	29	43° 20' 14.7" N	123° 43' 00.0" W
Drop Point	30	43° 20' 14.7" N	123° 45' 00.0" W
Drop Point	31	43° 20' 14.7" N	123° 47' 00.0" W
Drop Point	32	43° 20' 14.7" N	123° 49' 00.0" W
Drop Point	33	43° 20' 14.7" N	123° 51' 00.0" W
Drop Point	34	43° 20' 14.7" N	123° 53' 00.0" W
Drop Point	35	43° 20' 14.7" N	123° 55' 00.0" W
Drop Point	36	43° 20' 14.7" N	123° 57' 00.0" W
Drop Point	37	43° 20' 14.7" N	123° 59' 00.0" W
Drop Point	38	43° 20' 14.7" N	124° 01' 00.0" W
Drop Point	39	43° 20' 14.7" N	124° 03' 00.0" W
Drop Point	40	43° 20' 14.7" N	124° 05' 00.0" W
Drop Point	41	43° 20' 14.7" N	124° 07' 00.0" W
Drop Point	42	43° 20' 14.7" N	124° 09' 00.0" W
Drop Point	43	43° 20' 14.7" N	124° 11' 00.0" W
Drop Point	44	43° 20' 14.7" N	124° 13' 00.0" W
Drop Point	45	43° 20' 14.7" N	124° 15' 00.0" W
Drop Point	46	43° 20' 14.7" N	124° 17' 00.0" W
Drop Point	47	43° 20' 14.7" N	124° 19' 00.0" W
Drop Point	48	43° 20' 14.7" N	124° 21' 00.0" W
Drop Point	49	43° 20' 14.7" N	124° 23' 00.0" W
Drop Point	50	43° 20' 14.7" N	124° 25' 00.0" W
Drop Point	51	43° 20' 14.7" N	124° 27' 00.0" W
Drop Point	52	43° 20' 14.7" N	124° 29' 00.0" W
Drop Point	53	43° 20' 14.7" N	124° 31' 00.0" W
Drop Point	54	43° 20' 14.7" N	124° 33' 00.0" W
Drop Point	55	43° 20' 14.7" N	124° 35' 00.0" W
Drop Point	56	43° 20' 14.7" N	124° 37' 00.0" W
Drop Point	57	43° 20' 14.7" N	124° 39' 00.0" W
Drop Point	58	43° 20' 14.7" N	124° 41' 00.0" W
Drop Point	59	43° 20' 14.7" N	124° 43' 00.0" W
Drop Point	60	43° 20' 14.7" N	124° 45' 00.0" W
Drop Point	61	43° 20' 14.7" N	124° 47' 00.0" W
Drop Point	62	43° 20' 14.7" N	124° 49' 00.0" W
Drop Point	63	43° 20' 14.7" N	124° 51' 00.0" W
Drop Point	64	43° 20' 14.7" N	124° 53' 00.0" W
Drop Point	65	43° 20' 14.7" N	124° 55' 00.0" W
Drop Point	66	43° 20' 14.7" N	124° 57' 00.0" W
Drop Point	67	43° 20' 14.7" N	124° 59' 00.0" W
Drop Point	68	43° 20' 14.7" N	125° 01' 00.0" W
Drop Point	69	43° 20' 14.7" N	125° 03' 00.0" W
Drop Point	70	43° 20' 14.7" N	125° 05' 00.0" W
Drop Point	71	43° 20' 14.7" N	125° 07' 00.0" W
Drop Point	72	43° 20' 14.7" N	125° 09' 00.0" W
Drop Point	73	43° 20' 14.7" N	125° 11' 00.0" W
Drop Point	74	43° 20' 14.7" N	125° 13' 00.0" W
Drop Point	75	43° 20' 14.7" N	125° 15' 00.0" W
Drop Point	76	43° 20' 14.7" N	125° 17' 00.0" W
Drop Point	77	43° 20' 14.7" N	125° 19' 00.0" W
Drop Point	78	43° 20' 14.7" N	125° 21' 00.0" W
Drop Point	79	43° 20' 14.7" N	125° 23' 00.0" W
Drop Point	80	43° 20' 14.7" N	125° 25' 00.0" W
Drop Point	81	43° 20' 14.7" N	125° 27' 00.0" W
Drop Point	82	43° 20' 14.7" N	125° 29' 00.0" W
Drop Point	83	43° 20' 14.7" N	125° 31' 00.0" W
Drop Point	84	43° 20' 14.7" N	125° 33' 00.0" W
Drop Point	85	43° 20' 14.7" N	125° 35' 00.0" W
Drop Point	86	43° 20' 14.7" N	125° 37' 00.0" W
Drop Point	87	43° 20' 14.7" N	125° 39' 00.0" W
Drop Point	88	43° 20' 14.7" N	125° 41' 00.0" W
Drop Point	89	43° 20' 14.7" N	125° 43' 00.0" W
Drop Point	90	43° 20' 14.7" N	125° 45' 00.0" W
Drop Point	91	43° 20' 14.7" N	125° 47' 00.0" W
Drop Point	92	43° 20' 14.7" N	125° 49' 00.0" W
Drop Point	93	43° 20' 14.7" N	125° 51' 00.0" W
Drop Point	94	43° 20' 14.7" N	125° 53' 00.0" W
Drop Point	95	43° 20' 14.7" N	125° 55' 00.0" W
Drop Point	96	43° 20' 14.7" N	125° 57' 00.0" W
Drop Point	97	43° 20' 14.7" N	125° 59' 00.0" W
Drop Point	98	43° 20' 14.7" N	126° 01' 00.0" W
Drop Point	99	43° 20' 14.7" N	126° 03' 00.0" W
Drop Point	100	43° 20' 14.7" N	126° 05' 00.0" W

43° 05' N 43° 10' N 43° 15' N 43° 20' N 43° 25' N 43° 30' N 43° 35' N 43° 40' N 43° 45' N 43° 50' N 43° 55' N 44° 00' N

122° 51.5' W 122° 50.5' W 122° 49.5' W 122° 48.5' W 122° 47.5' W 122° 46.5' W 122° 45.5' W 122° 44.5' W 122° 43.5' W 122° 42.5' W 122° 41.5' W 122° 40.5' W 122° 39.5' W 122° 38.5' W 122° 37.5' W 122° 36.5' W 122° 35.5' W 122° 34.5' W 122° 33.5' W 122° 32.5' W 122° 31.5' W 122° 30.5' W 122° 29.5' W 122° 28.5' W 122° 27.5' W 122° 26.5' W 122° 25.5' W