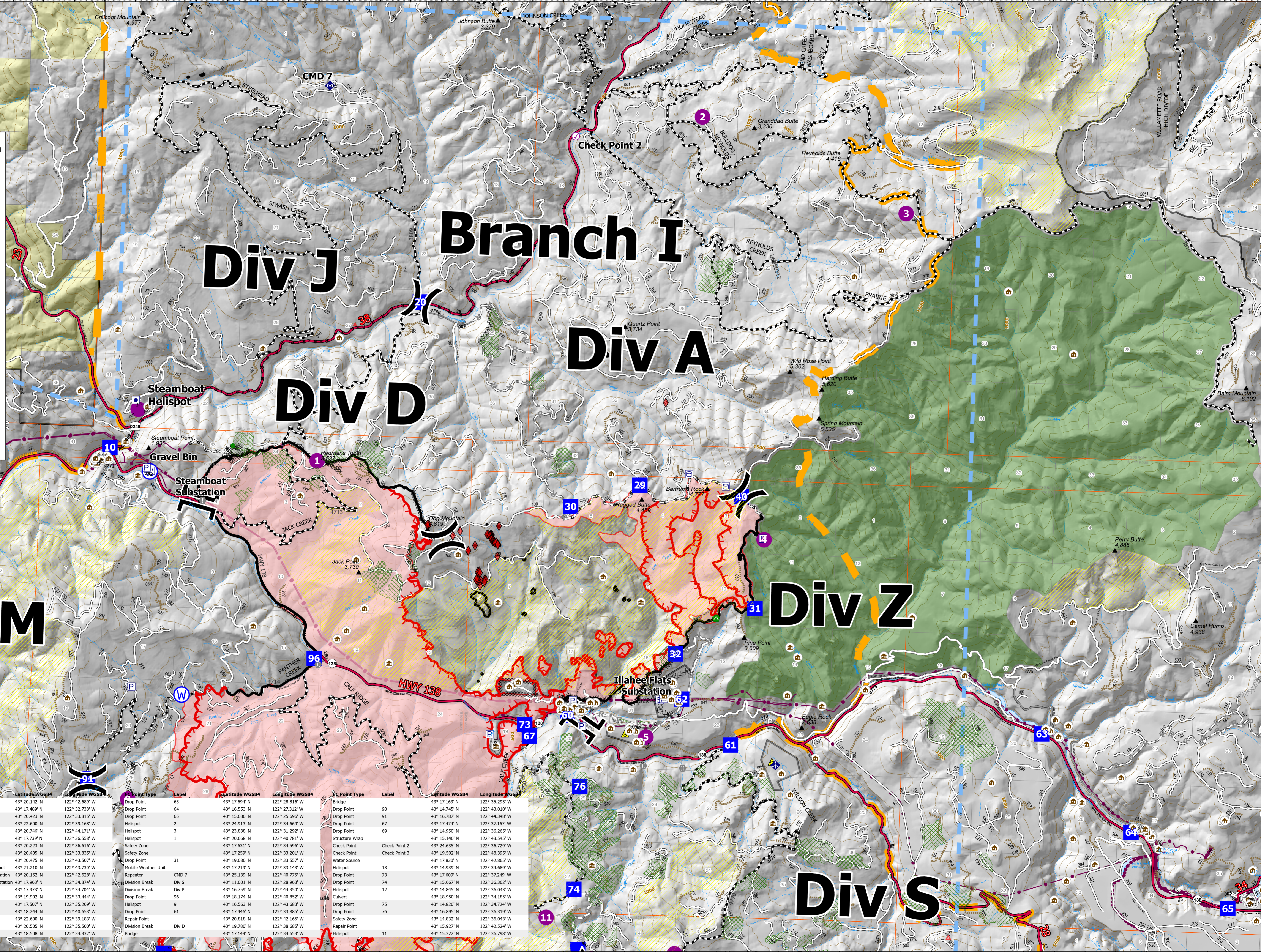


Operations Map
Branch I
 Jack Fire
 OR-UPF-000265
 07/16/2021 - 24hr
 16667 acres at 07/15/2021 2220

- ▲ Summit
- ▲ JackFireStructures_pt
- ◆ ATP
- ◆ Other Property
- Ⓟ Pump
- Ⓟ Water Tank
- Ⓟ Check Point
- Ⓟ Helispot
- Ⓟ Division Break
- Ⓟ Branch Break
- Ⓟ Drop Point
- Ⓟ Value at Risk
- Ⓟ Bridge
- Ⓟ Structure Wrap
- Ⓟ Repair Point
- Ⓟ Culvert
- Ⓟ Mobile Weather Unit
- Ⓟ Repeater
- Ⓟ Safety Zone
- Ⓟ Water Source
- Ⓟ Completed Dozer Line
- Ⓟ Completed Hand Line
- Ⓟ Completed Road as Line
- Ⓟ Planned Dozer Line
- Ⓟ Planned Road as Line
- Ⓟ Retardant Drop
- Ⓟ Temporary Flight Restriction
- Ⓟ Fire Edge
- Ⓟ Contained Line
- Ⓟ Wildfire Daily Fire Perimeter
- Ⓟ Contours 100ft
- Ⓟ Utility Power Lines
- Ⓟ Area Closure
- Ⓟ Roadless Areas Inventoried
- Ⓟ Timber Sale
- Ⓟ Area to Protect (ATP)
- Ⓟ Land Ownership
- Ⓟ BLM
- Ⓟ PV
- Ⓟ <all other values>
- Ⓟ Forest Service Land
- Ⓟ Wilderness
- Ⓟ Section
- Ⓟ Township
- Ⓟ HIFLD Roads
- Ⓟ Secondary Highway
- Ⓟ Paved Roads
- Ⓟ Dirt (Not Paved)
- Ⓟ A - Arterial
- Ⓟ C - Collector
- Ⓟ Forest Service Roads
- Ⓟ Paved Road
- Ⓟ Gravel Road
- Ⓟ Dirt Roads
- Ⓟ Unimproved Roads
- Ⓟ Unspecified
- Ⓟ Closed Roads
- Ⓟ <all other values>
- Ⓟ NHDWaterbody
- Ⓟ Lake / Pond
- Ⓟ Lake / Pond (Intermittent)
- Ⓟ NHDFlowline
- Ⓟ Stream/River

FC Point Type	Label	Latitude WGS84	Longitude WGS84	FC Point Type	Label	Latitude WGS84	Longitude WGS84
Branch Break	Branch II	43° 20.142' N	122° 42.689' W	Drop Point	63	43° 17.694' N	122° 28.816' W
Branch Break	Branch I	43° 17.489' N	122° 32.738' W	Drop Point	64	43° 16.553' N	122° 27.312' W
Division Break	Div A	43° 20.423' N	122° 33.815' W	Drop Point	65	43° 15.680' N	122° 25.696' W
Division Break	Div J	43° 22.600' N	122° 39.168' W	Drop Point	66	43° 24.913' N	122° 34.669' W
Drop Point	10	43° 20.746' N	122° 44.171' W	Drop Point	67	43° 23.838' N	122° 31.292' W
Drop Point	60	43° 17.739' N	122° 36.558' W	Drop Point	68	43° 20.668' N	122° 40.781' W
Drop Point	30	43° 20.223' N	122° 36.616' W	Drop Point	69	43° 14.950' N	122° 36.265' W
Drop Point	40	43° 20.405' N	122° 33.835' W	Drop Point	70	43° 15.140' N	122° 43.545' W
Water Source	Gravel Bin	43° 20.475' N	122° 43.507' W	Drop Point	71	43° 17.631' N	122° 34.596' W
Helispot	Steamboat Helispot	43° 21.210' N	122° 43.730' W	Drop Point	72	43° 17.259' N	122° 33.201' W
Value at Risk	Steamboat Substation	43° 20.152' N	122° 42.628' W	Drop Point	73	43° 19.080' N	122° 33.557' W
Value at Risk	Illahee Flats Substation	43° 17.963' N	122° 34.874' W	Drop Point	74	43° 17.219' N	122° 33.143' W
Drop Point	62	43° 17.973' N	122° 34.704' W	Drop Point	75	43° 25.139' N	122° 40.775' W
Drop Point	4	43° 19.902' N	122° 33.444' W	Drop Point	76	43° 11.001' N	122° 28.963' W
Drop Point	5	43° 17.507' N	122° 35.269' W	Drop Point	77	43° 16.759' N	122° 44.350' W
Drop Point	20	43° 18.244' N	122° 40.653' W	Drop Point	78	43° 18.174' N	122° 40.852' W
Drop Point	29	43° 20.505' N	122° 35.500' W	Drop Point	79	43° 16.563' N	122° 43.683' W
Drop Point	32	43° 18.508' N	122° 34.832' W	Drop Point	80	43° 17.446' N	122° 33.885' W
				Drop Point	81	43° 20.818' N	122° 42.165' W
				Drop Point	82	43° 19.780' N	122° 38.685' W
				Drop Point	83	43° 17.449' N	122° 34.653' W
				Drop Point	84	43° 17.163' N	122° 35.293' W
				Drop Point	85	43° 14.745' N	122° 43.010' W
				Drop Point	86	43° 16.787' N	122° 44.348' W
				Drop Point	87	43° 17.474' N	122° 37.167' W
				Drop Point	88	43° 14.950' N	122° 36.265' W
				Drop Point	89	43° 15.140' N	122° 43.545' W
				Drop Point	90	43° 24.635' N	122° 36.729' W
				Drop Point	91	43° 19.502' N	122° 48.395' W
				Drop Point	92	43° 17.830' N	122° 42.865' W
				Drop Point	93	43° 14.939' N	122° 34.689' W
				Drop Point	94	43° 17.609' N	122° 37.249' W
				Drop Point	95	43° 15.667' N	122° 36.362' W
				Drop Point	96	43° 14.845' N	122° 36.043' W
				Drop Point	97	43° 18.950' N	122° 34.185' W
				Drop Point	98	43° 18.820' N	122° 34.724' W
				Drop Point	99	43° 16.895' N	122° 36.319' W
				Drop Point	100	43° 14.832' N	122° 36.043' W
				Drop Point	101	43° 15.927' N	122° 42.524' W
				Drop Point	102	43° 15.322' N	122° 36.798' W

North American 1983 Datum Lat,Long
 NW Team 9
 7/16/2021 0451
 Acres from IIS



122°48.5'W 122°47.5'W 122°46.5'W 122°45.5'W 122°44.5'W 122°43.5'W 122°42.5'W 122°41.5'W 122°40.5'W 122°39.5'W 122°38.5'W 122°37.5'W 122°36.5'W 122°35.5'W 122°34.5'W 122°33.5'W 122°32.5'W 122°31.5'W 122°30.5'W 122°29.5'W 122°28.5'W 122°27.5'W 122°26.5'W 122°25.5'W