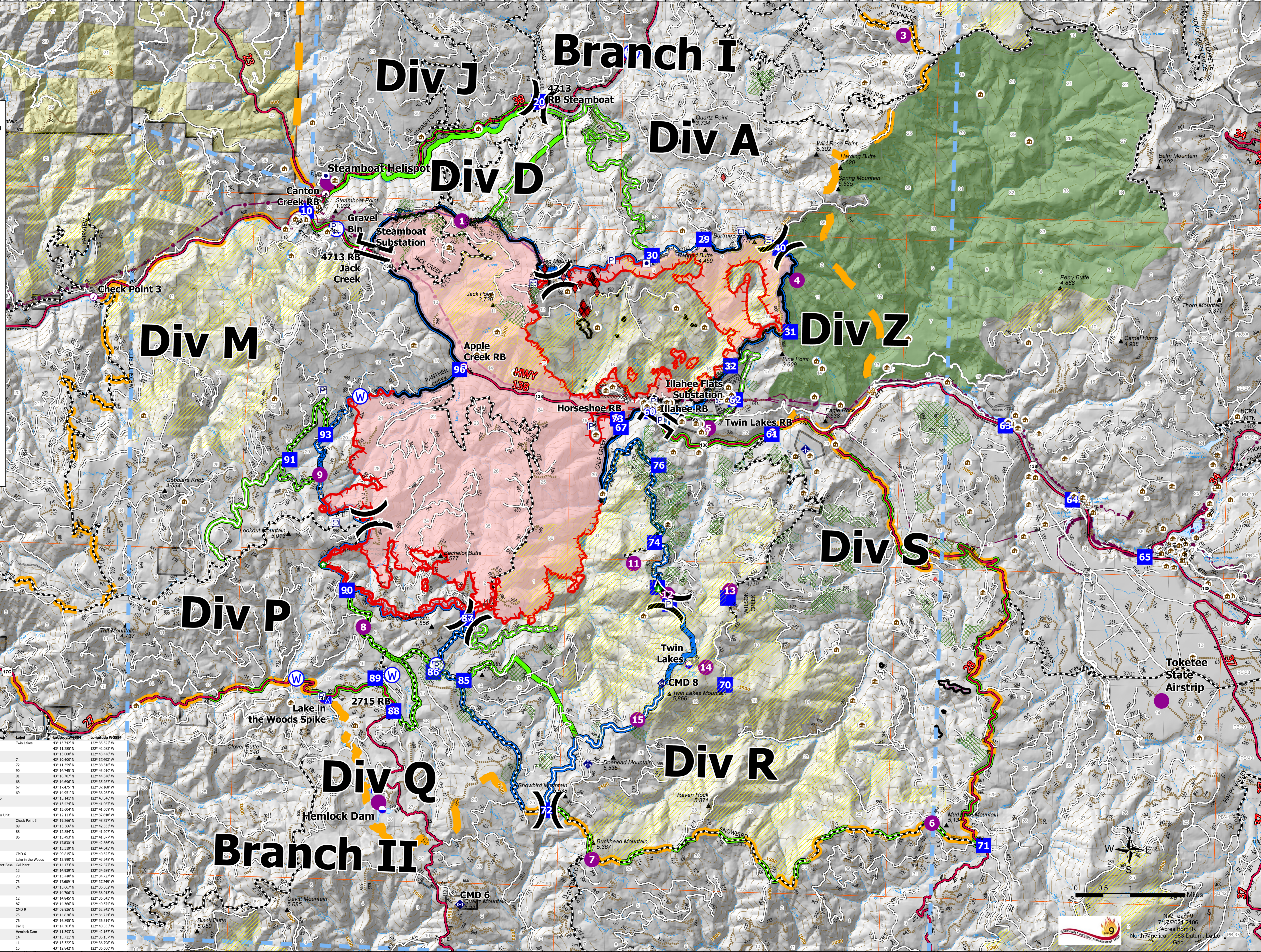


# Operations Map

Jack Fire  
 OR-UPF-000265  
 07/18/2021 - 24hr  
 16764 acres at 07/16/2021 2200

- Summit
- JackFireStructures\_pt
- ATP
- Other Property
- Pump
- Water Tank
- Check Point
- Dip Site
- Mobile Retardant Base
- Helispot
- Sling Site
- Division Break
- Branch Break
- Drop Point
- Camp
- Value at Risk
- Hazard Tree
- Mobile Weather Unit
- Repeater
- Water Source
- Completed Dozer Line
- Completed Hand Line
- Completed Road as Line
- Planned Dozer Line
- Planned Road as Line
- Retardant Drop
- Temporary Flight Restriction
- Fire Edge
- Contained Line
- Wildfire Daily Fire Perimeter
- Contours 100ft
- Area Closure
- Roadless Areas Inventoried
- Timber Sale
- Area to Protect (ATP)
- Land Ownership
- BLM
- PV
- <all other values>
- Forest Service Land
- Wilderness
- Section
- Protracted Section
- Township
- HIFLD Roads
- Primary Highway
- Secondary Highway
- Paved Highway
- Dirt (Not Paved)
- Interstate Not Paved
- US Route Not Paved
- A - Arterial
- C - Collector
- Forest Service Roads
- Paved Road
- Gravel Road
- Dirt Roads
- Unimproved Roads
- Unspecified
- Closed Roads
- <all other values>
- NHDWaterbody
- Lake / Pond
- Lake / Pond (Intermittent)
- Reservoir
- NHDFlowline
- Stream/River
- Utility Power Lines

FC Point Type	Label	Latitude WGS84	Longitude WGS84	FC Point Type	Label	Latitude WGS84	Longitude WGS84
Branch Break	Branch II	43° 20.142' N	122° 42.600' W	Dip Site	Twin Lakes	43° 13.742' N	122° 35.522' W
Branch Break	Branch I	43° 17.651' N	122° 36.914' W	Dip Site		43° 11.259' N	122° 41.863' W
Division Break	Div A	43° 20.424' N	122° 33.816' W	Dip Site		43° 13.008' N	122° 43.446' W
Drop Point	10	43° 22.600' N	122° 39.168' W	Drop Point	72	43° 10.600' N	122° 37.493' W
Drop Point	11	43° 20.740' N	122° 44.711' W	Drop Point	73	43° 11.359' N	122° 38.519' W
Drop Point	60	43° 17.739' N	122° 36.558' W	Drop Point	90	43° 14.745' N	122° 43.010' W
Drop Point	30	43° 20.223' N	122° 36.616' W	Drop Point	91	43° 16.787' N	122° 44.348' W
Drop Point	40	43° 20.405' N	122° 33.833' W	Drop Point	68	43° 14.696' N	122° 35.987' W
Water Source	Gravel Bin	43° 17.507' N	122° 45.507' W	Water Source	67	43° 12.475' N	122° 32.168' W
Helispot	Steamboat Helispot	43° 21.210' N	122° 43.730' W	Drop Point	69	43° 14.951' N	122° 36.265' W
Helispot	Takotee State Airstrip	43° 13.402' N	122° 25.237' W	Structure Wrip	49	43° 15.141' N	122° 43.546' W
Value at Risk	Steamboat Substation	43° 20.572' N	122° 42.828' W	Water Source	74	43° 13.424' N	122° 41.867' W
Value at Risk	Illahee Flats Substation	43° 17.963' N	122° 34.914' W	Water Source	75	43° 13.609' N	122° 41.009' W
Drop Point	62	43° 17.973' N	122° 34.704' W	Mobile Weather Unit	43	43° 12.113' N	122° 37.648' W
Drop Point	4	43° 19.902' N	122° 33.444' W	Check Point	Check Point 3	43° 19.266' N	122° 40.727' W
Drop Point	5	43° 19.687' N	122° 35.867' W	Drop Point	76	43° 13.366' N	122° 43.333' W
Drop Point	20	43° 22.600' N	122° 39.183' W	Drop Point	88	43° 12.854' N	122° 41.907' W
Drop Point	29	43° 20.505' N	122° 35.500' W	Drop Point	86	43° 13.493' N	122° 41.077' W
Drop Point	32	43° 19.687' N	122° 34.817' W	Water Source	77	43° 13.639' N	122° 43.869' W
Drop Point	63	43° 17.694' N	122° 28.816' W	Water Source	49	43° 13.319' N	122° 44.945' W
Drop Point	64	43° 16.533' N	122° 27.312' W	Repeater	CHD 6	43° 09.815' N	122° 40.325' W
Drop Point	65	43° 15.680' N	122° 25.686' W	Camp	Lake in the Woods	43° 12.990' N	122° 43.348' W
Drop Point	66	43° 18.022' N	122° 23.987' W	Mobile Retardant Base	Gal Flare	43° 14.172' N	122° 42.577' W
Helispot	31	43° 23.838' N	122° 31.293' W	Helispot	13	43° 14.939' N	122° 34.689' W
Helispot	1	43° 20.668' N	122° 40.782' W	Drop Point	70	43° 13.440' N	122° 34.727' W
Mobile Weather Unit	1	43° 19.687' N	122° 33.517' W	Drop Point	71	43° 13.695' N	122° 33.319' W
Repeater	CHD 8	43° 14.314' N	122° 36.093' W	Drop Point	73	43° 14.366' N	122° 40.374' W
Division Break	Div S	43° 14.720' N	122° 35.992' W	Division Break	Div Q	43° 14.303' N	122° 40.335' W
Division Break	Div R	43° 11.842' N	122° 38.813' W	Repeater	CHD 9	43° 09.936' N	122° 52.943' W
Division Break	Div P	43° 15.894' N	122° 42.527' W	Drop Point	75	43° 14.820' N	122° 34.724' W
Drop Point	96	43° 18.314' N	122° 40.723' W	Drop Point	76	43° 14.895' N	122° 35.157' W
Drop Point	71	43° 11.817' N	122° 29.609' W	Helispot	11	43° 15.322' N	122° 36.796' W
Helispot	9	43° 16.564' N	122° 43.684' W	Helispot	14	43° 13.711' N	122° 35.157' W
Drop Point	61	43° 17.446' N	122° 33.885' W	Helispot	15	43° 12.942' N	122° 36.600' W
Division Break	Div D	43° 19.780' N	122° 38.685' W				
Drop Point	8	43° 14.168' N	122° 42.638' W				
Helispot	9	43° 11.348' N	122° 30.142' W				



0 0.5 1 2 Miles

North American 1983 Datum, Lat/Long Grid

7/17/2021 2106  
 Acres from IR  
 North American 1983 Datum, Lat/Long Grid