

Operations Map

Jack Fire
OR-UPF-000265
07/18/2021 - 24hr
16764 acres at 07/16/2021 2200

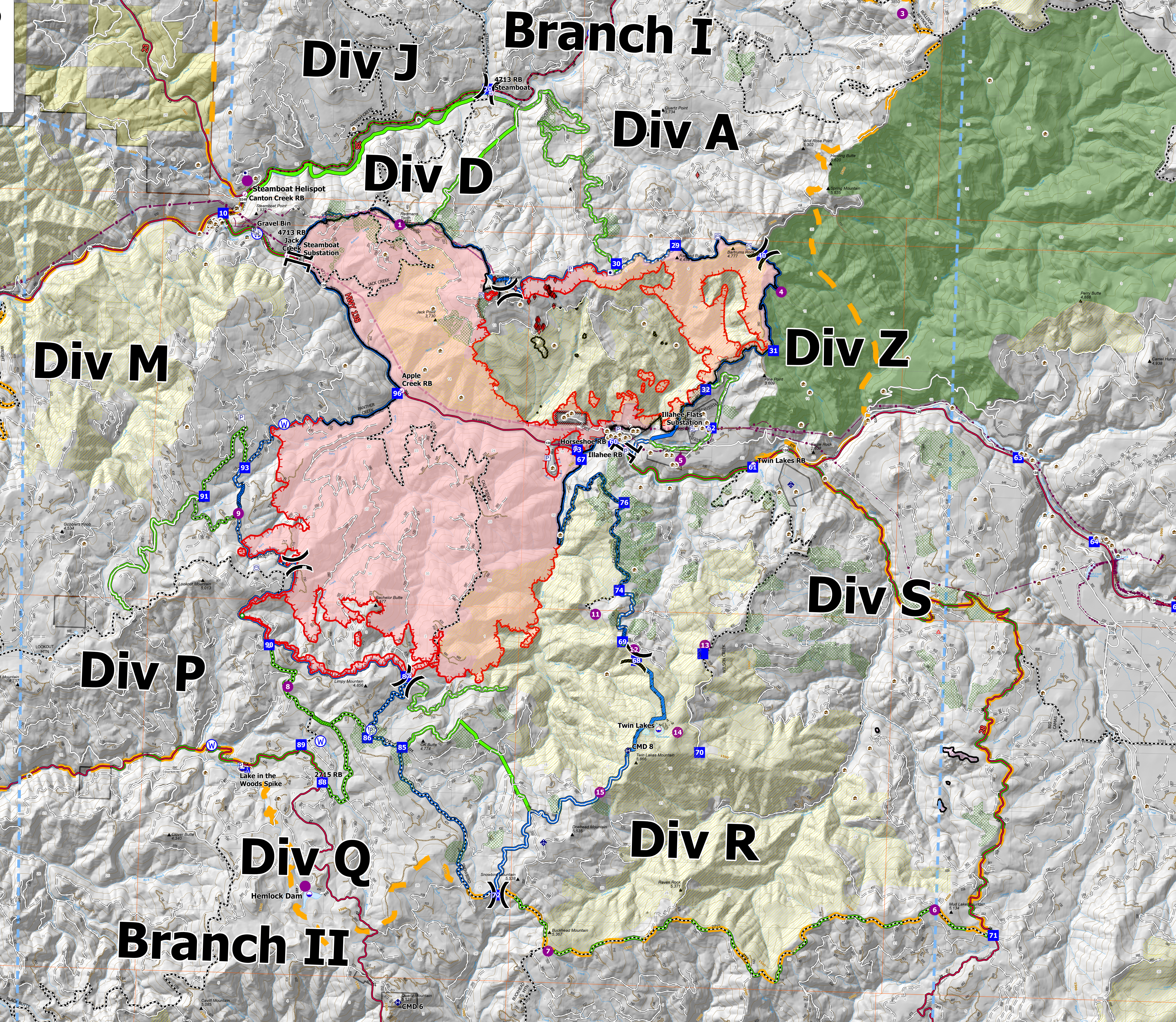
- Summit
- JackFireStructures_pt
- ATP
- Other Property
- Pump
- Water Tank
- Check Point
- Dip Site
- Mobile Retardant Base
- Helispot
- Sling Site
- Division Break
- Branch Break
- Drop Point
- Camp
- Value at Risk
- Structure Wrap
- Hazard Tree
- Mobile Weather Unit
- Repeater
- Water Source
- Completed Dozer Line
- Completed Road as Line
- Planned Dozer Line
- Planned Road as Line
- Retardant Drop
- Temporary Flight Restriction
- Fire Edge
- Contained Line
- Wildfire Daily Fire Perimeter
- Area Closure
- Alternate
- Contingency
- Utility Power Lines
- Contours 100ft
- Roadless Areas Invented
- Timber Sale
- Area to Protect (ATP)
- Land Ownership
- BLM
- PV
- call other values-
- Wilderness
- Protected Section
- Section
- Township
- HIFLD Roads
- Primary Highway
- Secondary Highway
- Paved Road
- Dirt (Not Paved)
- Interstate Not Paved
- US Route Not Paved
- A - Arterial
- C - Collector
- Forest Service Roads
- Paved Road
- Gravel Road
- Dirt Roads
- Unimproved Roads
- UnSpecified
- Other
- call other values-



NW Team 9
7/17/2021 2054
Acres from IOR
Northwest Incident Management Team

Unit	Lat/Long	Length/Width
Branch II	43° 21' 24" N 122° 42' 00" W	42.800 W
Branch I	43° 21' 24" N 122° 38' 00" W	38.000 W
Div A	43° 20' 54" N 122° 35' 00" W	35.000 W
Div B	43° 20' 54" N 122° 31' 00" W	31.000 W
Div C	43° 20' 54" N 122° 27' 00" W	27.000 W
Div D	43° 20' 54" N 122° 23' 00" W	23.000 W
Div E	43° 20' 54" N 122° 19' 00" W	19.000 W
Div F	43° 20' 54" N 122° 15' 00" W	15.000 W
Div G	43° 20' 54" N 122° 11' 00" W	11.000 W
Div H	43° 20' 54" N 122° 07' 00" W	07.000 W
Div I	43° 20' 54" N 122° 03' 00" W	03.000 W
Div J	43° 20' 54" N 122° 00' 00" W	00.000 W
Div K	43° 20' 54" N 122° 00' 00" W	00.000 W
Div L	43° 20' 54" N 122° 00' 00" W	00.000 W
Div M	43° 20' 54" N 122° 00' 00" W	00.000 W
Div N	43° 20' 54" N 122° 00' 00" W	00.000 W
Div O	43° 20' 54" N 122° 00' 00" W	00.000 W
Div P	43° 20' 54" N 122° 00' 00" W	00.000 W
Div Q	43° 20' 54" N 122° 00' 00" W	00.000 W
Div R	43° 20' 54" N 122° 00' 00" W	00.000 W
Div S	43° 20' 54" N 122° 00' 00" W	00.000 W
Div T	43° 20' 54" N 122° 00' 00" W	00.000 W
Div U	43° 20' 54" N 122° 00' 00" W	00.000 W
Div V	43° 20' 54" N 122° 00' 00" W	00.000 W
Div W	43° 20' 54" N 122° 00' 00" W	00.000 W
Div X	43° 20' 54" N 122° 00' 00" W	00.000 W
Div Y	43° 20' 54" N 122° 00' 00" W	00.000 W
Div Z	43° 20' 54" N 122° 00' 00" W	00.000 W

43° 00' N 122° 51.5' W to 43° 10' N 122° 25.5' W



122° 51.5' W to 122° 25.5' W