

Operations Map Branch I

Jack Fire
OR-UPF-000265
07/18/2021 - 24hr
16764 acres at 07/16/2021 2200

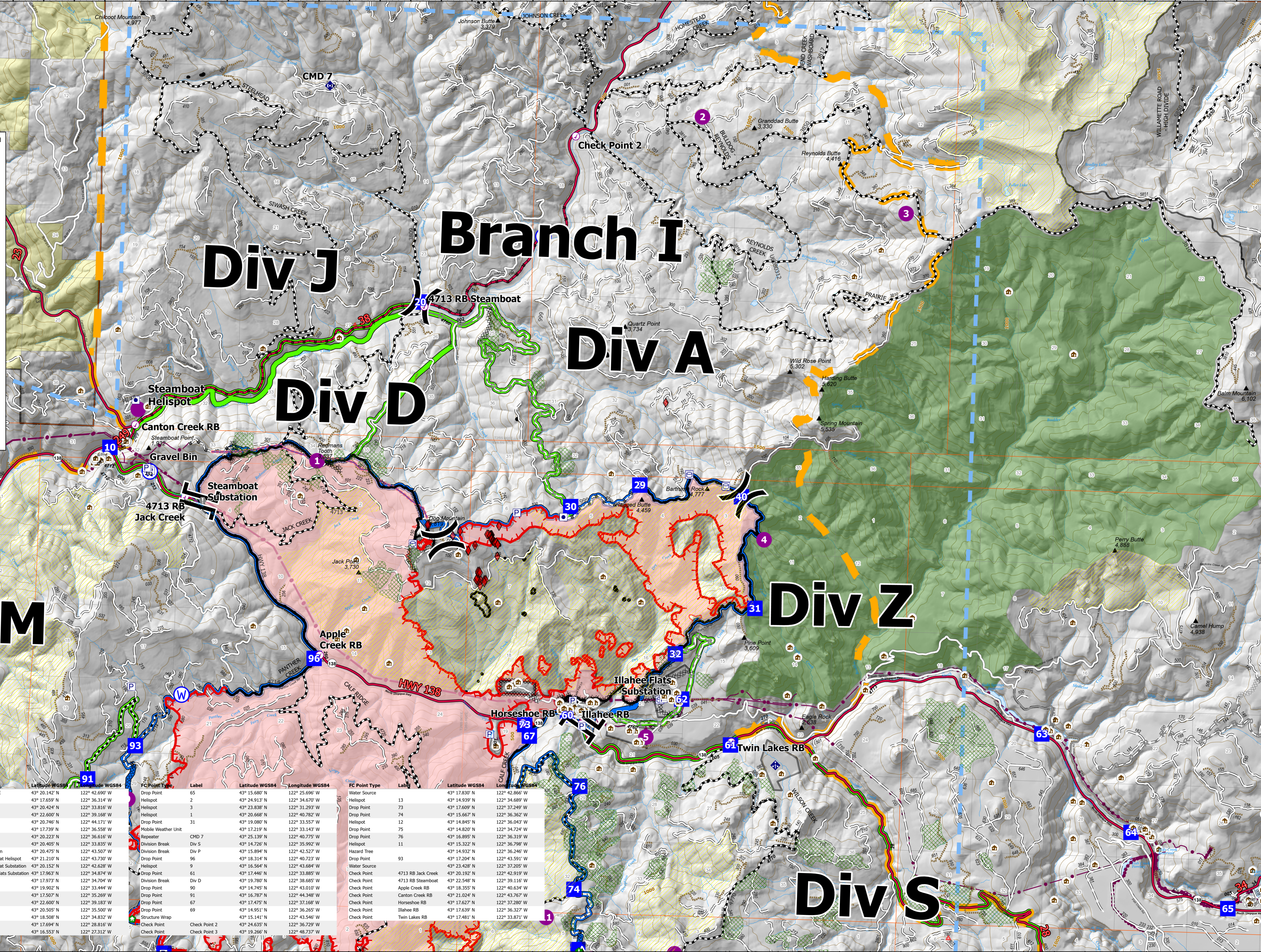
0 0.5 Miles

- Summit
- JackFireStructures_pt
- ATP
- Other Property
- Pump
- Water Tank
- Check Point
- Helispot
- Division Break
- Branch Break
- Drop Point
- Value at Risk
- Structure Wrap
- Hazard Tree
- Mobile Weather Unit
- Repeater
- Water Source
- Completed Dozer Line
- Completed Hand Line
- Completed Road as Line
- Planned Dozer Line
- Planned Road as Line
- Retardant Drop
- Temporary Flight Restriction
- Fire Edge
- Contained Line
- Other
- Wildfire Daily Fire Perimeter
- Contours 100ft
- Utility Power Lines
- Area Closure
- Roadless Areas Inventoried
- Timber Sale
- Area to Protect (ATP)
- Land Ownership
- BLM
- PV
- <all other values>
- Forest Service Land
- Wilderness
- Section
- Township
- HIFLD Roads
- Secondary Highway
- Paved Roads
- Dirt (Not Paved)
- A - Arterial
- C - Collector
- Forest Service Roads
- Paved Road
- Gravel Road
- Dirt Roads
- Unimproved Roads
- Unspecified
- Closed Roads
- <all other values>
- NHDWaterbody
- Lake / Pond
- Lake / Pond (Intermittent)
- NHDFlowline
- Stream/River

91 92 93 94 95 96 97 98 99 100

FC Point Type	Label	Latitude WGS84	Longitude WGS84	FC Point Type	Label	Latitude WGS84	Longitude WGS84
Branch II	65	43° 20.142' N	122° 42.690' W	Drop Point	65	43° 15.680' N	122° 25.696' W
Branch Break	Branch I	43° 17.659' N	122° 36.314' W	Helispot	2	43° 24.913' N	122° 34.670' W
Division Break	Div A	43° 20.424' N	122° 33.816' W	Helispot	3	43° 23.838' N	122° 31.293' W
Division Break	Div J	43° 22.600' N	122° 39.168' W	Helispot	31	43° 20.668' N	122° 40.782' W
Drop Point	10	43° 20.746' N	122° 44.171' W	Drop Point	1	43° 19.080' N	122° 33.557' W
Drop Point	60	43° 17.739' N	122° 36.558' W	Mobile Weather Unit	31	43° 17.219' N	122° 33.143' W
Drop Point	30	43° 20.223' N	122° 36.616' W	Repeater	CMD 7	43° 25.139' N	122° 40.775' W
Drop Point	40	43° 20.405' N	122° 33.835' W	Division Break	Div S	43° 14.726' N	122° 35.992' W
Water Source	Gravel Bin	43° 20.475' N	122° 43.507' W	Drop Point	Div P	43° 15.894' N	122° 42.527' W
Helispot	Steamboat Helispot	43° 21.210' N	122° 43.732' W	Drop Point	96	43° 19.814' N	122° 40.723' W
Value at Risk	Steamboat Substation	43° 20.152' N	122° 42.628' W	Helispot	9	43° 16.564' N	122° 43.684' W
Value at Risk	Illahee Flats Substation	43° 17.963' N	122° 34.874' W	Drop Point	61	43° 17.446' N	122° 33.885' W
Drop Point	62	43° 17.973' N	122° 34.704' W	Division Break	Div D	43° 19.780' N	122° 38.685' W
Drop Point	4	43° 19.902' N	122° 33.444' W	Drop Point	90	43° 14.745' N	122° 43.010' W
Drop Point	5	43° 17.507' N	122° 35.269' W	Drop Point	91	43° 16.787' N	122° 44.348' W
Drop Point	20	43° 22.600' N	122° 39.183' W	Drop Point	67	43° 17.475' N	122° 37.168' W
Drop Point	29	43° 20.505' N	122° 35.500' W	Drop Point	69	43° 14.951' N	122° 36.265' W
Drop Point	32	43° 18.508' N	122° 34.832' W	Structure Wrap	69	43° 15.141' N	122° 43.546' W
Drop Point	63	43° 17.694' N	122° 28.816' W	Check Point	Check Point 2	43° 24.635' N	122° 36.729' W
Drop Point	64	43° 16.553' N	122° 27.312' W	Check Point	Check Point 3	43° 19.266' N	122° 48.737' W

North American 1983 Datum, Lat, Long



122°48.5'W 122°47.5'W 122°46.5'W 122°45.5'W 122°44.5'W 122°43.5'W 122°42.5'W 122°41.5'W 122°40.5'W 122°39.5'W 122°38.5'W 122°37.5'W 122°36.5'W 122°35.5'W 122°34.5'W 122°33.5'W 122°32.5'W 122°31.5'W 122°30.5'W 122°29.5'W 122°28.5'W 122°27.5'W 122°26.5'W 122°25.5'W