

Operations Map

Branch II

Jack Fire
 OR-UPF-000265
 07/18/2021 - 24hr

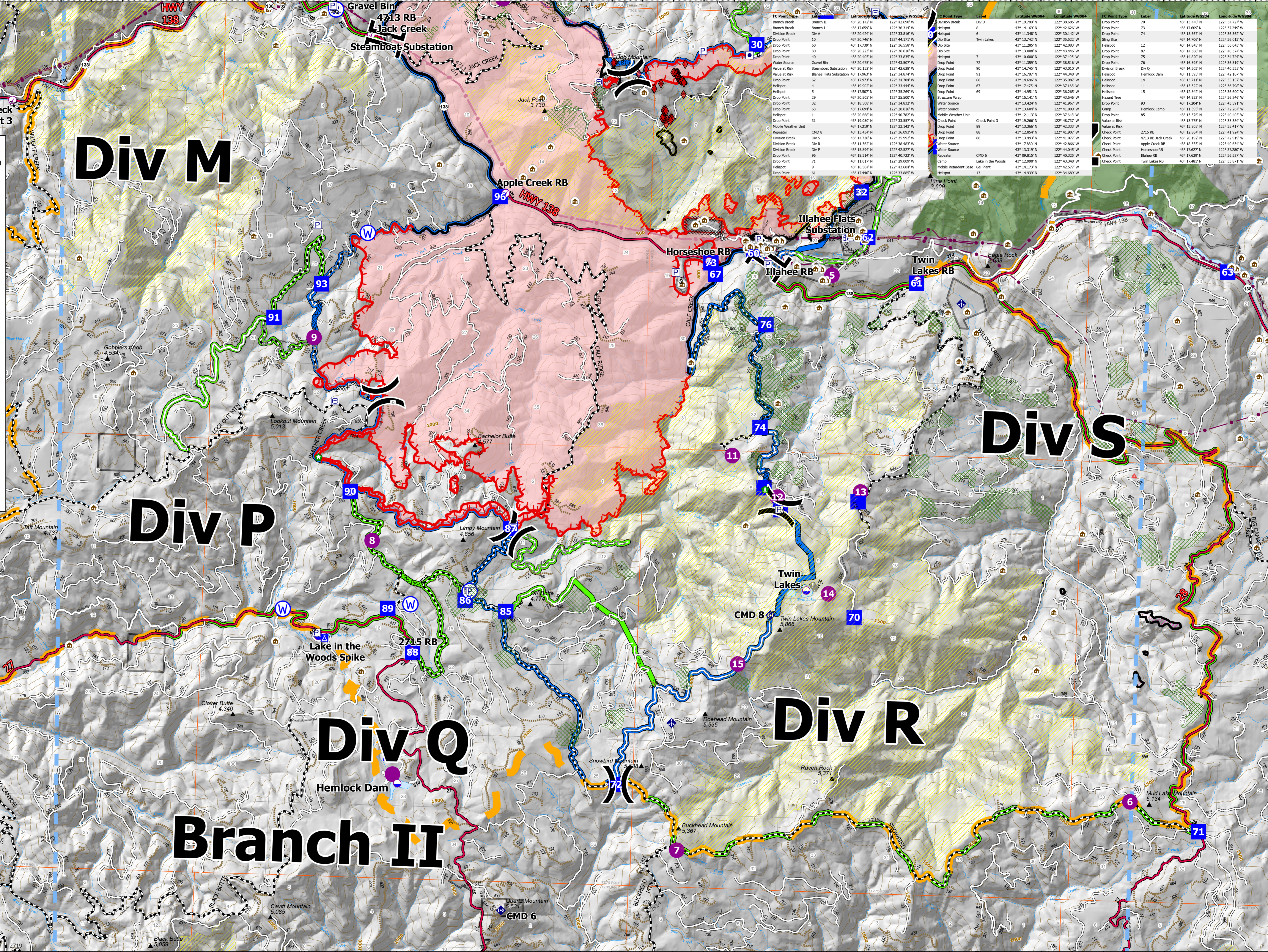
16764 acres at 07/16/2021 2200

Summit	Contours 100ft
JackFireStructures_pt	Area Closure
ATP	Roadless Areas Inventoried
Other Property	Timber Sale
Pump	Area to Protect (ATP)
Water Tank	Land Ownership
Check Point	PV
Dip Site	<all other values>
Mobile Retardant Base	Forest Service Land
Helispot	Wilderness
Sling Site	Protracted Section
Division Break	Section
Branch Break	Township
Drop Point	HIFLHD Roads
Camp	Primary Highway
Value at Risk	Secondary Highway
Structure Wrap	Paved Roads
Hazard Tree	Dirt (Not Paved)
Mobile Weather Unit	Interstate Not Paved
Repeater	US Route Not Paved
Water Source	A - Arterial
Completed Dozer Line	C - Collector
Completed Hand Line	Forest Service Roads
Completed Road as Line	Paved Road
Planned Road as Line	Gravel Road
Retardant Drop	Dirt Roads
Temporary Flight Restriction	Unimproved Roads
Fire Edge	Unspecified
Contained Line	Closed Roads
Other	<all other values>
Wildfire Daily Fire Perimeter	NHDWaterbody
Alternate	Lake / Pond
Primary	Lake / Pond (Intermittent)
Emergency	Reservoir
Contingency	NHDFlowline
Utility Power Lines	Stream/River

FC Point Type	Label	Latitude WGS84	Longitude WGS84
Branch Break	Branch I	43° 20.142' N	122° 42.690' W
Branch Break	Branch II	43° 16.659' N	122° 36.314' W
Division Break	Div A	43° 20.424' N	122° 33.816' W
Drop Point	60	43° 20.746' N	122° 44.212' W
Drop Point	60	43° 17.739' N	122° 36.558' W
Drop Point	30	43° 20.223' N	122° 36.616' W
Drop Point	40	43° 20.405' N	122° 33.835' W
Drop Point	4	43° 19.902' N	122° 33.944' W
Drop Point	5	43° 17.507' N	122° 35.269' W
Drop Point	29	43° 20.505' N	122° 35.500' W
Drop Point	40	43° 20.405' N	122° 33.835' W
Drop Point	63	43° 17.596' N	122° 28.816' W
Drop Point	1	43° 06.668' N	122° 40.782' W
Drop Point	31	43° 19.089' N	122° 33.557' W
Drop Point	63	43° 19.808' N	122° 33.443' W
Drop Point	63	43° 14.549' N	122° 36.993' W
Drop Point	86	43° 14.726' N	122° 35.992' W
Drop Point	Div S	43° 11.362' N	122° 38.483' W
Drop Point	Div P	43° 13.866' N	122° 42.527' W
Drop Point	96	43° 18.314' N	122° 40.723' W
Drop Point	71	43° 11.017' N	122° 29.009' W
Drop Point	61	43° 16.564' N	122° 43.684' W
Drop Point	68	43° 17.446' N	122° 33.885' W

43°10N 43°11N 43°12N 43°13N 43°14N 43°15N 43°16N 43°17N 43°18N 43°19N 43°20N

122°28W 122°29W 122°30W 122°31W 122°32W 122°33W 122°34W 122°35W 122°36W 122°37W 122°38W 122°39W 122°40W 122°41W 122°42W 122°43W 122°44W 122°45W 122°46W 122°47W 122°48W 122°49W 122°50W 122°51W



FC Point Type	Label	Latitude WGS84	Longitude WGS84
Drop Point	70	43° 13.440' N	122° 34.722' W
Drop Point	73	43° 17.609' N	122° 37.249' W
Drop Point	74	43° 15.667' N	122° 36.362' W
Sling Site	75	43° 14.706' N	122° 36.013' W
Helispot	12	43° 14.845' N	122° 36.043' W
Drop Point	87	43° 14.366' N	122° 40.374' W
Drop Point	75	43° 17.493' N	122° 34.724' W
Drop Point	76	43° 16.895' N	122° 36.319' W
Division Break	Div Q	43° 14.303' N	122° 40.335' W
Helispot	14	43° 13.711' N	122° 35.157' W
Drop Point	75	43° 14.820' N	122° 34.724' W
Helispot	11	43° 15.322' N	122° 36.288' W
Helispot	15	43° 12.842' N	122° 36.600' W
Value at Risk	43° 14.932' N	122° 36.246' W	
Drop Point	83	43° 13.775' N	122° 35.384' W
Value at Risk	43° 13.805' N	122° 35.419' W	
Drop Point	76	43° 17.204' N	122° 35.593' W
Camp	2715 RB	43° 11.895' N	122° 36.268' W
Drop Point	85	43° 13.376' N	122° 40.405' W
Value at Risk	43° 13.775' N	122° 35.384' W	
Value at Risk	43° 13.805' N	122° 35.419' W	
Check Point	2715 RB	43° 11.895' N	122° 36.268' W
Check Point	4713 RB Jack Creek	43° 12.862' N	122° 42.919' W
Check Point	Apple Creek RB	43° 18.355' N	122° 36.634' W
Check Point	Hemlock RB	43° 17.627' N	122° 37.280' W
Check Point	Illahoe RB	43° 17.639' N	122° 36.327' W
Check Point	Twin Lakes RB	43° 17.481' N	122° 31.871' W