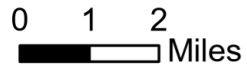


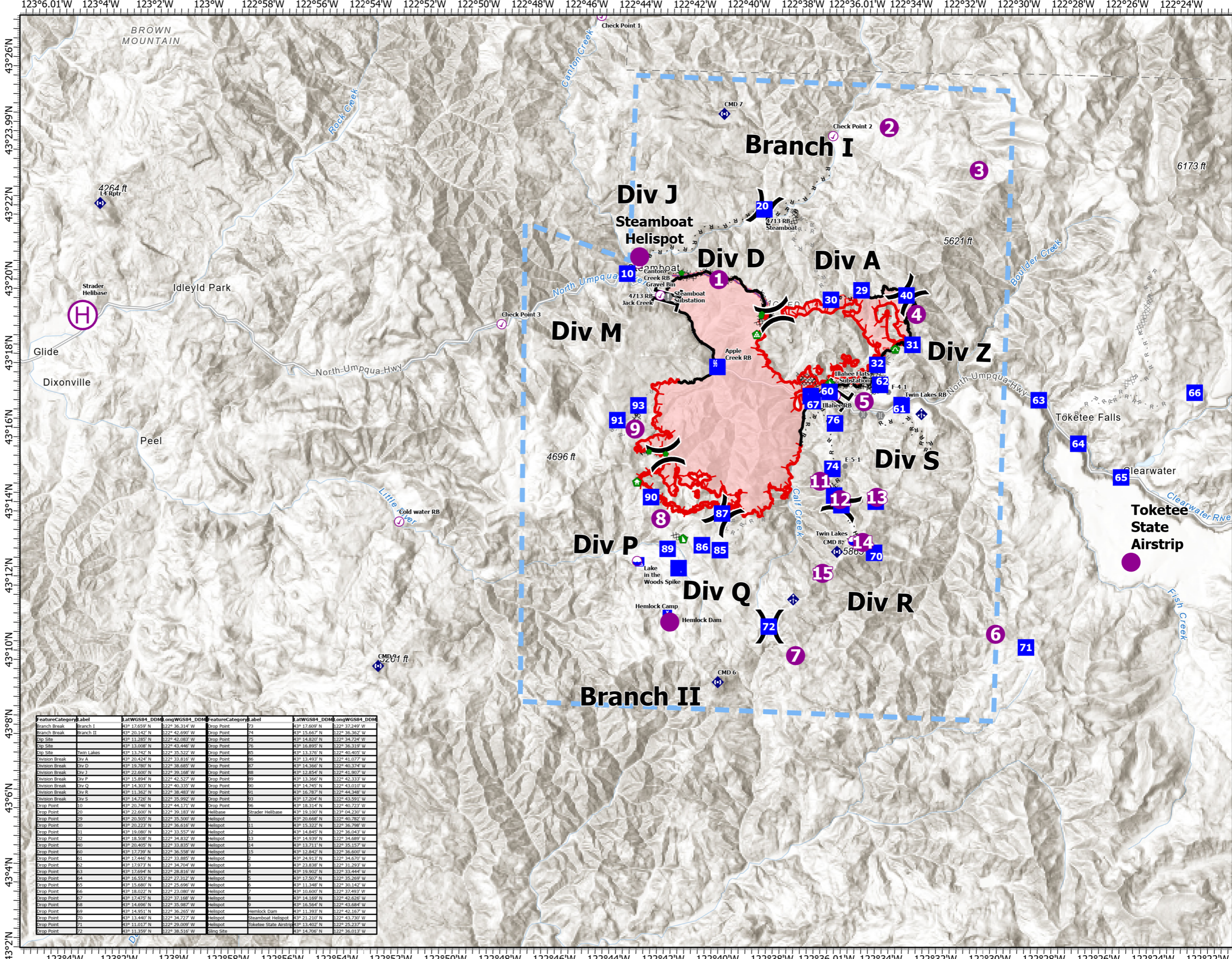
Pilots Map

Jack Fire
OR-UPF-000265
07/18/2021 - 24hr

16764 acres at 07/16/2021 2200



- ▬ Wildfire Daily Fire Perimeter
- XX Completed Dozer Line
- H Completed Hand Line
- R Completed Road as Line
- R Planned Dozer Line
- R Planned Road as Line
- ▬ Retardant Drop
- ▬ Temporary Flight Restriction
- ▬ Fire Edge
- ▬ Contained Line
- Helispot
- Dip Site
- Drop Point
- Sling Site
- Check Point
- Mobile Retardant Base
- ⊕ Helibase
- X Division Break
- | Branch Break
- ▬ Incident Command Post
- ⬮ Camp
- Value at Risk
- Other
- ⬮ Bridge
- ⬮ Structure Wrap
- ⬮ Repair Point
- ⬮ Landing or Log Deck
- ⬮ Hazard Tree
- ⬮ Dozer Push
- ⬮ Culvert
- ⬮ Mobile Weather Unit
- ⬮ Repeater



FeatureCategory	Label	LatWGS84_DDM	LongWGS84_DDM	FeatureCategory	Label	LatWGS84_DDM	LongWGS84_DDM
Branch Break	Branch I	43° 17.659' N	122° 36.314' W	Drop Point	73	43° 17.609' N	122° 37.249' W
Branch Break	Branch II	43° 20.142' N	122° 42.690' W	Drop Point	74	43° 15.667' N	122° 36.362' W
Dip Site		43° 11.285' N	122° 42.083' W	Drop Point	75	43° 14.820' N	122° 34.724' W
Dip Site		43° 13.008' N	122° 43.446' W	Drop Point	76	43° 16.895' N	122° 36.319' W
Dip Site	Twin Lakes	43° 18.742' N	122° 35.322' W	Drop Point	85	43° 19.376' N	122° 40.495' W
Division Break	Div A	43° 20.424' N	122° 33.816' W	Drop Point	86	43° 13.991' N	122° 41.077' W
Division Break	Div D	43° 19.780' N	122° 38.885' W	Drop Point	87	43° 14.366' N	122° 40.374' W
Division Break	Div J	43° 22.600' N	122° 39.168' W	Drop Point	88	43° 12.854' N	122° 41.907' W
Division Break	Div P	43° 15.894' N	122° 42.527' W	Drop Point	89	43° 13.366' N	122° 42.333' W
Division Break	Div Q	43° 14.303' N	122° 40.335' W	Drop Point	90	43° 14.745' N	122° 43.010' W
Division Break	Div R	43° 11.362' N	122° 38.483' W	Drop Point	91	43° 16.787' N	122° 44.348' W
Division Break	Div S	43° 14.726' N	122° 35.992' W	Drop Point	93	43° 17.204' N	122° 43.591' W
Drop Point	10	43° 20.746' N	122° 44.171' W	Drop Point	96	43° 18.514' N	122° 40.723' W
Drop Point	20	43° 22.600' N	122° 39.183' W	Helibase	Strader Helibase	43° 19.100' N	122° 04.230' W
Drop Point	29	43° 20.505' N	122° 35.500' W	Helispot	1	43° 20.668' N	122° 40.782' W
Drop Point	30	43° 20.223' N	122° 36.616' W	Helispot	11	43° 15.322' N	122° 36.798' W
Drop Point	31	43° 19.080' N	122° 33.557' W	Helispot	12	43° 14.845' N	122° 36.043' W
Drop Point	32	43° 18.508' N	122° 34.832' W	Helispot	13	43° 14.939' N	122° 34.689' W
Drop Point	40	43° 20.405' N	122° 33.833' W	Helispot	14	43° 13.711' N	122° 35.157' W
Drop Point	50	43° 17.739' N	122° 36.358' W	Helispot	15	43° 12.842' N	122° 36.600' W
Drop Point	51	43° 17.446' N	122° 33.885' W	Helispot	2	43° 24.913' N	122° 34.670' W
Drop Point	52	43° 17.973' N	122° 34.704' W	Helispot	3	43° 23.838' N	122° 31.293' W
Drop Point	53	43° 17.694' N	122° 28.816' W	Helispot	4	43° 19.902' N	122° 33.444' W
Drop Point	54	43° 16.553' N	122° 27.312' W	Helispot	5	43° 17.507' N	122° 35.269' W
Drop Point	55	43° 15.680' N	122° 25.696' W	Helispot	6	43° 11.848' N	122° 30.142' W
Drop Point	56	43° 18.022' N	122° 23.880' W	Helispot	7	43° 10.600' N	122° 37.492' W
Drop Point	57	43° 17.425' N	122° 37.168' W	Helispot	8	43° 14.169' N	122° 42.626' W
Drop Point	58	43° 14.696' N	122° 35.987' W	Helispot	9	43° 16.564' N	122° 43.684' W
Drop Point	59	43° 14.951' N	122° 36.265' W	Helispot	Hemlock Dam	43° 11.393' N	122° 42.167' W
Drop Point	70	43° 13.440' N	122° 34.727' W	Helispot	Steamboat Helispot	43° 21.210' N	122° 43.730' W
Drop Point	71	43° 11.017' N	122° 29.009' W	Helispot	Toketee State Airstrip	43° 13.402' N	122° 25.237' W
Drop Point	72	43° 11.359' N	122° 38.516' W	Sling Site		43° 14.706' N	122° 36.013' W



NW Team 9
7/17/2021 2205
Acres from IR
North American 1983 Datum. LatLong Grid