

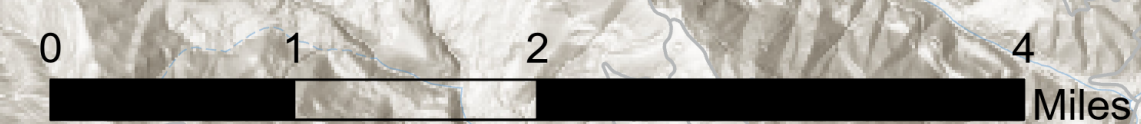
# Pilots Map

Jack Fire

OR-UPF-000265

07/18/2021 - 24hr

16764 acres at 07/16/2021 2200

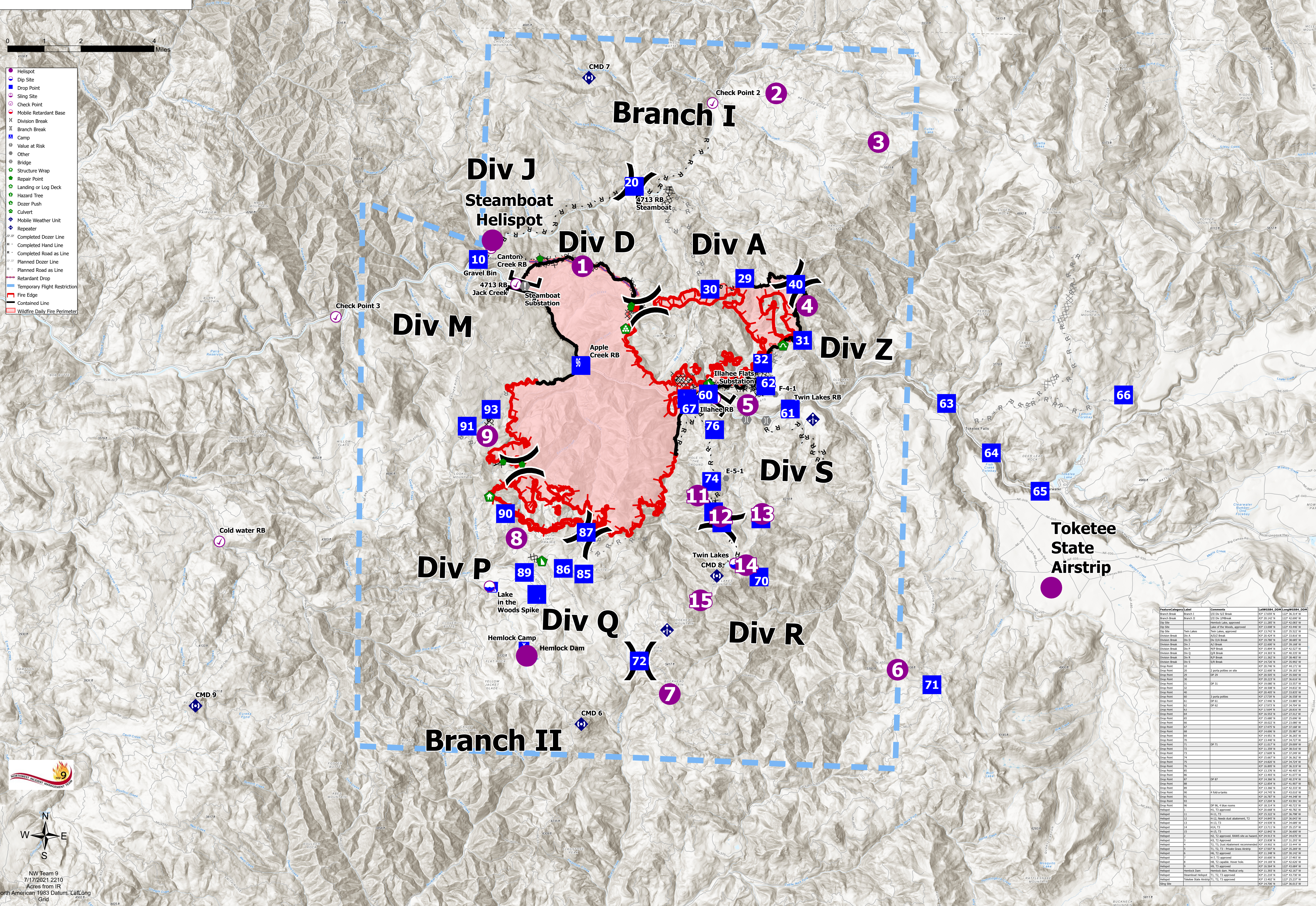


- Helispot
- Dip Site
- Drop Point
- Sling Site
- Check Point
- Mobile Retardant Base
- X Division Break
- II Branch Break
- Camp
- Value at Risk
- Other
- Bridge
- Structure Wrap
- Repair Point
- Landing or Log Deck
- Hazard Tree
- Dozer Push
- Culvert
- Mobile Weather Unit
- Repeater
- Completed Dozer Line
- Completed Hand Line
- Completed Road as Line
- Planned Dozer Line
- Planned Road as Line
- Retardant Drop
- Temporary Flight Restriction
- Fire Edge
- Contained Line
- Wildfire Daily Fire Perimeter



NW Team 9  
7/17/2021 2210  
Acres from IR  
North American 1983 Datum, LatLong  
Grid

4225



Feature/Category/Label	Comments	Lat/Long (NAD83)	Lat/Long (WGS84)
Branch Break	Branch I	43° 20' 142" N	122° 42' 600" W
Branch Break	Branch II	43° 20' 142" N	122° 42' 600" W
Dip Site	Lake of the Woods, approved	43° 13' 000" N	122° 43' 440" W
Dip Site	Twin Lakes, approved	43° 12' 120" N	122° 35' 120" W
Division Break	Div A	43° 20' 424" N	122° 33' 810" W
Division Break	Div B	43° 19' 760" N	122° 38' 460" W
Division Break	Div C	43° 22' 400" N	122° 36' 140" W
Division Break	Div D	43° 15' 880" N	122° 42' 537" W
Division Break	Div E	43° 14' 320" N	122° 40' 330" W
Division Break	Div F	43° 11' 360" N	122° 38' 480" W
Division Break	Div G	43° 14' 240" N	122° 35' 020" W
Drop Point	10	43° 20' 740" N	122° 44' 170" W
Drop Point	20	43° 22' 600" N	122° 36' 180" W
Drop Point	30	43° 20' 220" N	122° 36' 610" W
Drop Point	40	43° 18' 580" N	122° 34' 830" W
Drop Point	50	43° 18' 580" N	122° 34' 830" W
Drop Point	60	43° 17' 720" N	122° 36' 550" W
Drop Point	70	43° 17' 480" N	122° 33' 880" W
Drop Point	80	43° 17' 040" N	122° 36' 740" W
Drop Point	90	43° 17' 040" N	122° 36' 740" W
Drop Point	100	43° 15' 680" N	122° 38' 610" W
Drop Point	110	43° 14' 320" N	122° 35' 020" W
Drop Point	120	43° 15' 680" N	122° 35' 020" W
Drop Point	130	43° 14' 320" N	122° 35' 020" W
Drop Point	140	43° 14' 320" N	122° 35' 020" W
Drop Point	150	43° 15' 680" N	122° 35' 020" W
Drop Point	160	43° 14' 320" N	122° 35' 020" W
Drop Point	170	43° 14' 320" N	122° 35' 020" W
Drop Point	180	43° 14' 320" N	122° 35' 020" W
Drop Point	190	43° 14' 320" N	122° 35' 020" W
Drop Point	200	43° 14' 320" N	122° 35' 020" W
Drop Point	210	43° 14' 320" N	122° 35' 020" W
Drop Point	220	43° 14' 320" N	122° 35' 020" W
Drop Point	230	43° 14' 320" N	122° 35' 020" W
Drop Point	240	43° 14' 320" N	122° 35' 020" W
Drop Point	250	43° 14' 320" N	122° 35' 020" W
Drop Point	260	43° 14' 320" N	122° 35' 020" W
Drop Point	270	43° 14' 320" N	122° 35' 020" W
Drop Point	280	43° 14' 320" N	122° 35' 020" W
Drop Point	290	43° 14' 320" N	122° 35' 020" W
Drop Point	300	43° 14' 320" N	122° 35' 020" W
Drop Point	310	43° 14' 320" N	122° 35' 020" W
Drop Point	320	43° 14' 320" N	122° 35' 020" W
Drop Point	330	43° 14' 320" N	122° 35' 020" W
Drop Point	340	43° 14' 320" N	122° 35' 020" W
Drop Point	350	43° 14' 320" N	122° 35' 020" W
Drop Point	360	43° 14' 320" N	122° 35' 020" W
Drop Point	370	43° 14' 320" N	122° 35' 020" W
Drop Point	380	43° 14' 320" N	122° 35' 020" W
Drop Point	390	43° 14' 320" N	122° 35' 020" W
Drop Point	400	43° 14' 320" N	122° 35' 020" W
Drop Point	410	43° 14' 320" N	122° 35' 020" W
Drop Point	420	43° 14' 320" N	122° 35' 020" W
Drop Point	430	43° 14' 320" N	122° 35' 020" W
Drop Point	440	43° 14' 320" N	122° 35' 020" W
Drop Point	450	43° 14' 320" N	122° 35' 020" W
Drop Point	460	43° 14' 320" N	122° 35' 020" W
Drop Point	470	43° 14' 320" N	122° 35' 020" W
Drop Point	480	43° 14' 320" N	122° 35' 020" W
Drop Point	490	43° 14' 320" N	122° 35' 020" W
Drop Point	500	43° 14' 320" N	122° 35' 020" W
Drop Point	510	43° 14' 320" N	122° 35' 020" W
Drop Point	520	43° 14' 320" N	122° 35' 020" W
Drop Point	530	43° 14' 320" N	122° 35' 020" W
Drop Point	540	43° 14' 320" N	122° 35' 020" W
Drop Point	550	43° 14' 320" N	122° 35' 020" W
Drop Point	560	43° 14' 320" N	122° 35' 020" W
Drop Point	570	43° 14' 320" N	122° 35' 020" W
Drop Point	580	43° 14' 320" N	122° 35' 020" W
Drop Point	590	43° 14' 320" N	122° 35' 020" W
Drop Point	600	43° 14' 320" N	122° 35' 020" W
Drop Point	610	43° 14' 320" N	122° 35' 020" W
Drop Point	620	43° 14' 320" N	122° 35' 020" W
Drop Point	630	43° 14' 320" N	122° 35' 020" W
Drop Point	640	43° 14' 320" N	122° 35' 020" W
Drop Point	650	43° 14' 320" N	122° 35' 020" W
Drop Point	660	43° 14' 320" N	122° 35' 020" W
Drop Point	670	43° 14' 320" N	122° 35' 020" W
Drop Point	680	43° 14' 320" N	122° 35' 020" W
Drop Point	690	43° 14' 320" N	122° 35' 020" W
Drop Point	700	43° 14' 320" N	122° 35' 020" W
Drop Point	710	43° 14' 320" N	122° 35' 020" W
Drop Point	720	43° 14' 320" N	122° 35' 020" W
Drop Point	730	43° 14' 320" N	122° 35' 020" W
Drop Point	740	43° 14' 320" N	122° 35' 020" W
Drop Point	750	43° 14' 320" N	122° 35' 020" W
Drop Point	760	43° 14' 320" N	122° 35' 020" W
Drop Point	770	43° 14' 320" N	122° 35' 020" W
Drop Point	780	43° 14' 320" N	122° 35' 020" W
Drop Point	790	43° 14' 320" N	122° 35' 020" W
Drop Point	800	43° 14' 320" N	122° 35' 020" W
Drop Point	810	43° 14' 320" N	122° 35' 020" W
Drop Point	820	43° 14' 320" N	122° 35' 020" W
Drop Point	830	43° 14' 320" N	122° 35' 020" W
Drop Point	840	43° 14' 320" N	122° 35' 020" W
Drop Point	850	43° 14' 320" N	122° 35' 020" W
Drop Point	860	43° 14' 320" N	122° 35' 020" W
Drop Point	870	43° 14' 320" N	122° 35' 020" W
Drop Point	880	43° 14' 320" N	122° 35' 020" W
Drop Point	890	43° 14' 320" N	122° 35' 020" W
Drop Point	900	43° 14' 320" N	122° 35' 020" W
Drop Point	910	43° 14' 320" N	122° 35' 020" W
Drop Point	920	43° 14' 320" N	122° 35' 020" W
Drop Point	930	43° 14' 320" N	122° 35' 020" W
Drop Point	940	43° 14' 320" N	122° 35' 020" W
Drop Point	950	43° 14' 320" N	122° 35' 020" W
Drop Point	960	43° 14' 320" N	122° 35' 020" W
Drop Point	970	43° 14' 320" N	122° 35' 020" W
Drop Point	980	43° 14' 320" N	122° 35' 020" W
Drop Point	990	43° 14' 320" N	122° 35' 020" W
Drop Point	1000	43° 14' 320" N	122° 35' 020" W