

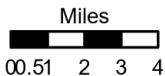
Dutch Creek Map



BG
7/17/2021 2009

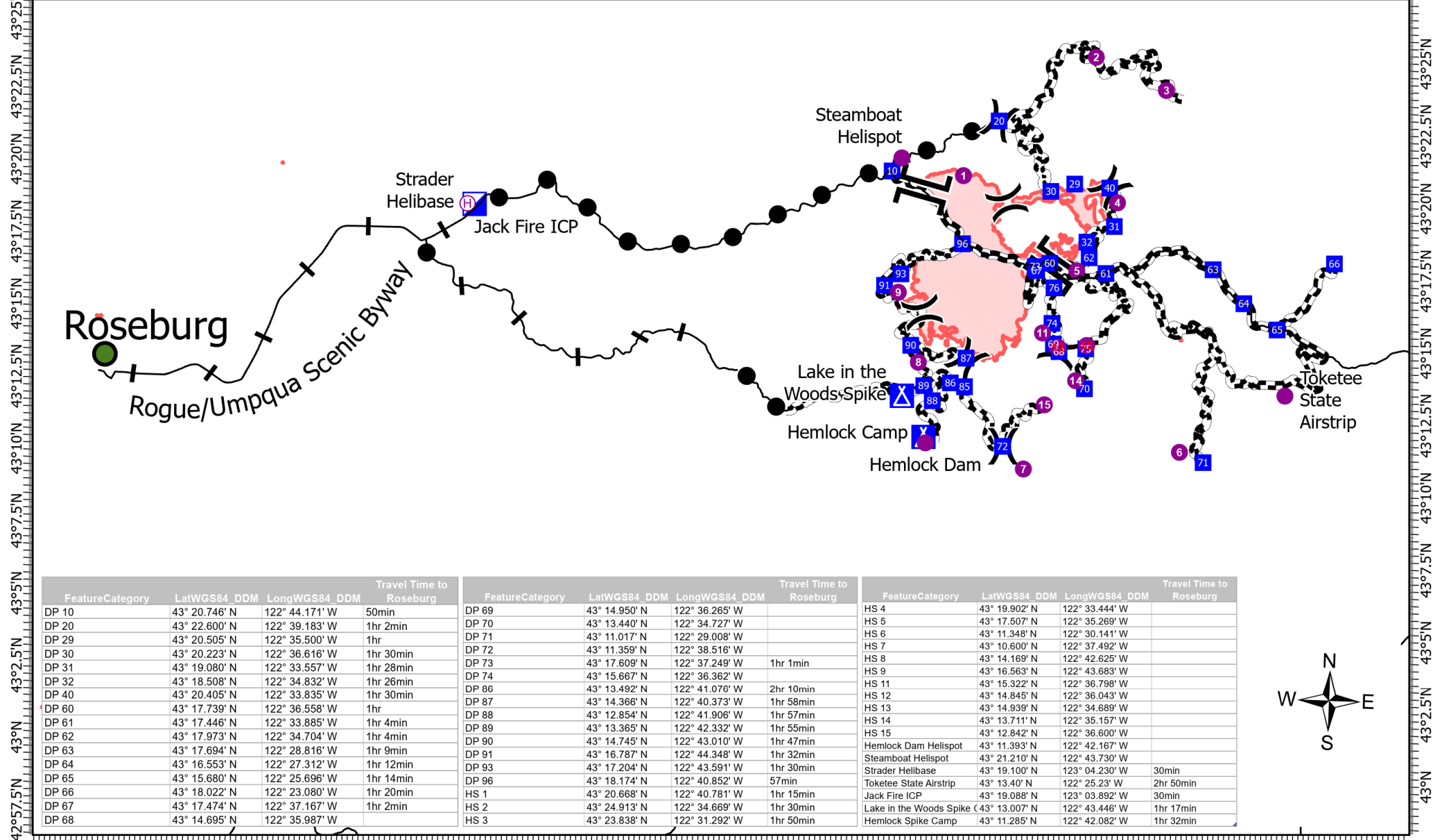
North American 1983 Datum. LatLong Grid

07/17/2021 - 24hr



- City
- Helispot
- H Helibase
-) Division Break
- Scenic_Byway
- Branch Break
- Incident Command Post
- Drop Point
- Camp
- <40 min
- <60 min
- >60 min
- Other
- Wildfire Daily Fire Perimeter

123°25'W 123°20'W 123°15'W 123°10'W 123°5'W 123°W 122°55'W 122°50'W 122°45'W 122°40'W 122°35'W 122°30'W 122°25'W 122°20'W



| FeatureCategory | LatWGS84_DDM | LongWGS84_DDM | Travel Time to Roseburg |
|-----------------|---------------|----------------|-------------------------|
| DP 10 | 43° 20.746' N | 122° 44.171' W | 50min |
| DP 20 | 43° 22.600' N | 122° 39.183' W | 1hr 2min |
| DP 29 | 43° 20.505' N | 122° 35.500' W | 1hr |
| DP 30 | 43° 20.223' N | 122° 36.616' W | 1hr 30min |
| DP 31 | 43° 19.080' N | 122° 33.557' W | 1hr 28min |
| DP 32 | 43° 18.508' N | 122° 34.832' W | 1hr 26min |
| DP 40 | 43° 20.405' N | 122° 33.835' W | 1hr 30min |
| DP 60 | 43° 17.739' N | 122° 36.558' W | 1hr |
| DP 61 | 43° 17.446' N | 122° 33.885' W | 1hr 4min |
| DP 62 | 43° 17.973' N | 122° 34.704' W | 1hr 4min |
| DP 63 | 43° 17.694' N | 122° 28.816' W | 1hr 9min |
| DP 64 | 43° 16.553' N | 122° 27.312' W | 1hr 12min |
| DP 65 | 43° 15.680' N | 122° 25.696' W | 1hr 14min |
| DP 66 | 43° 18.022' N | 122° 23.080' W | 1hr 20min |
| DP 67 | 43° 17.474' N | 122° 37.167' W | 1hr 2min |
| DP 68 | 43° 14.695' N | 122° 35.987' W | |

| FeatureCategory | LatWGS84_DDM | LongWGS84_DDM | Travel Time to Roseburg |
|-----------------|---------------|----------------|-------------------------|
| DP 69 | 43° 14.950' N | 122° 36.265' W | |
| DP 70 | 43° 13.440' N | 122° 34.727' W | |
| DP 71 | 43° 11.017' N | 122° 29.008' W | |
| DP 72 | 43° 11.359' N | 122° 38.516' W | |
| DP 73 | 43° 17.609' N | 122° 37.249' W | 1hr 1min |
| DP 74 | 43° 15.667' N | 122° 36.362' W | |
| DP 86 | 43° 13.492' N | 122° 41.076' W | 2hr 10min |
| DP 87 | 43° 14.366' N | 122° 40.373' W | 1hr 58min |
| DP 88 | 43° 12.854' N | 122° 41.906' W | 1hr 57min |
| DP 89 | 43° 13.365' N | 122° 42.332' W | 1hr 55min |
| DP 90 | 43° 14.745' N | 122° 43.010' W | 1hr 47min |
| DP 91 | 43° 16.787' N | 122° 44.348' W | 1hr 32min |
| DP 93 | 43° 17.204' N | 122° 43.591' W | 1hr 30min |
| DP 96 | 43° 18.174' N | 122° 40.852' W | 57min |
| HS 1 | 43° 20.668' N | 122° 40.781' W | 1hr 15min |
| HS 2 | 43° 24.913' N | 122° 34.669' W | 1hr 30min |
| HS 3 | 43° 23.838' N | 122° 31.292' W | 1hr 50min |

| FeatureCategory | LatWGS84_DDM | LongWGS84_DDM | Travel Time to Roseburg |
|-------------------------|---------------|----------------|-------------------------|
| HS 4 | 43° 19.902' N | 122° 33.444' W | |
| HS 5 | 43° 17.507' N | 122° 35.269' W | |
| HS 6 | 43° 11.348' N | 122° 30.141' W | |
| HS 7 | 43° 10.600' N | 122° 37.492' W | |
| HS 8 | 43° 14.169' N | 122° 42.625' W | |
| HS 9 | 43° 16.563' N | 122° 43.683' W | |
| HS 11 | 43° 15.322' N | 122° 36.798' W | |
| HS 12 | 43° 14.845' N | 122° 36.043' W | |
| HS 13 | 43° 14.939' N | 122° 34.689' W | |
| HS 14 | 43° 13.711' N | 122° 35.157' W | |
| HS 15 | 43° 12.842' N | 122° 36.600' W | |
| Hemlock Dam Helispot | 43° 11.393' N | 122° 42.167' W | |
| Steamboat Helispot | 43° 21.210' N | 122° 43.730' W | |
| Strader Helibase | 43° 19.100' N | 123° 04.230' W | 30min |
| Toketee Slate Airstrip | 43° 13.40' N | 122° 25.23' W | 2hr 50min |
| Jack Fire ICP | 43° 19.088' N | 123° 03.892' W | 30min |
| Lake in the Woods Spike | 43° 13.007' N | 122° 43.446' W | 1hr 17min |
| Hemlock Spike Camp | 43° 11.285' N | 122° 42.082' W | 1hr 32min |



123°22.5'W 123°17.5'W 123°12.5'W 123°7.5'W 123°2.5'W 122°57.5'W 122°52.5'W 122°47.5'W 122°42.5'W 122°37.5'W 122°32.5'W 122°27.5'W 122°22.5'W