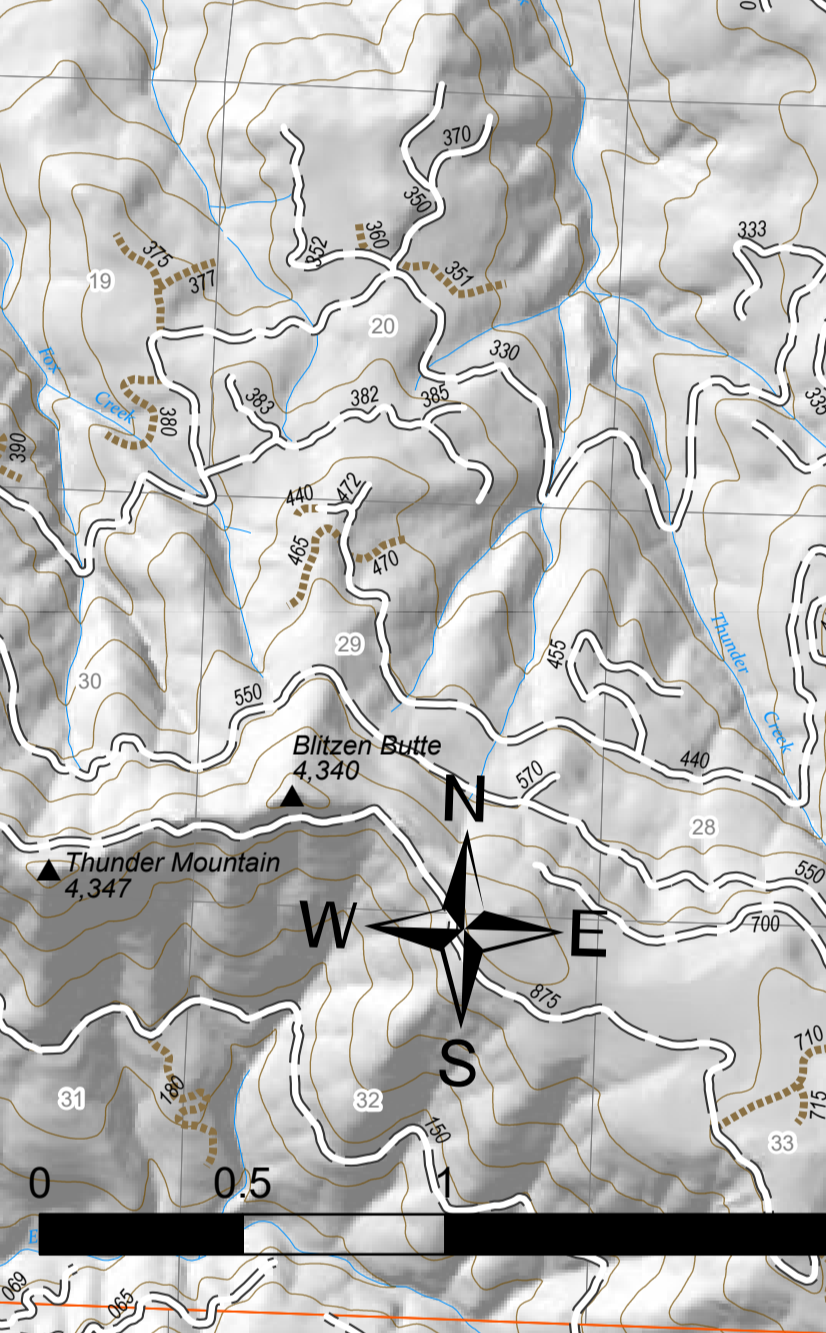


Operations Map

Jack Fire
OR-UPF-000265
07/17/2021 - 24hr

16764 acres at 07/16/2021 2200

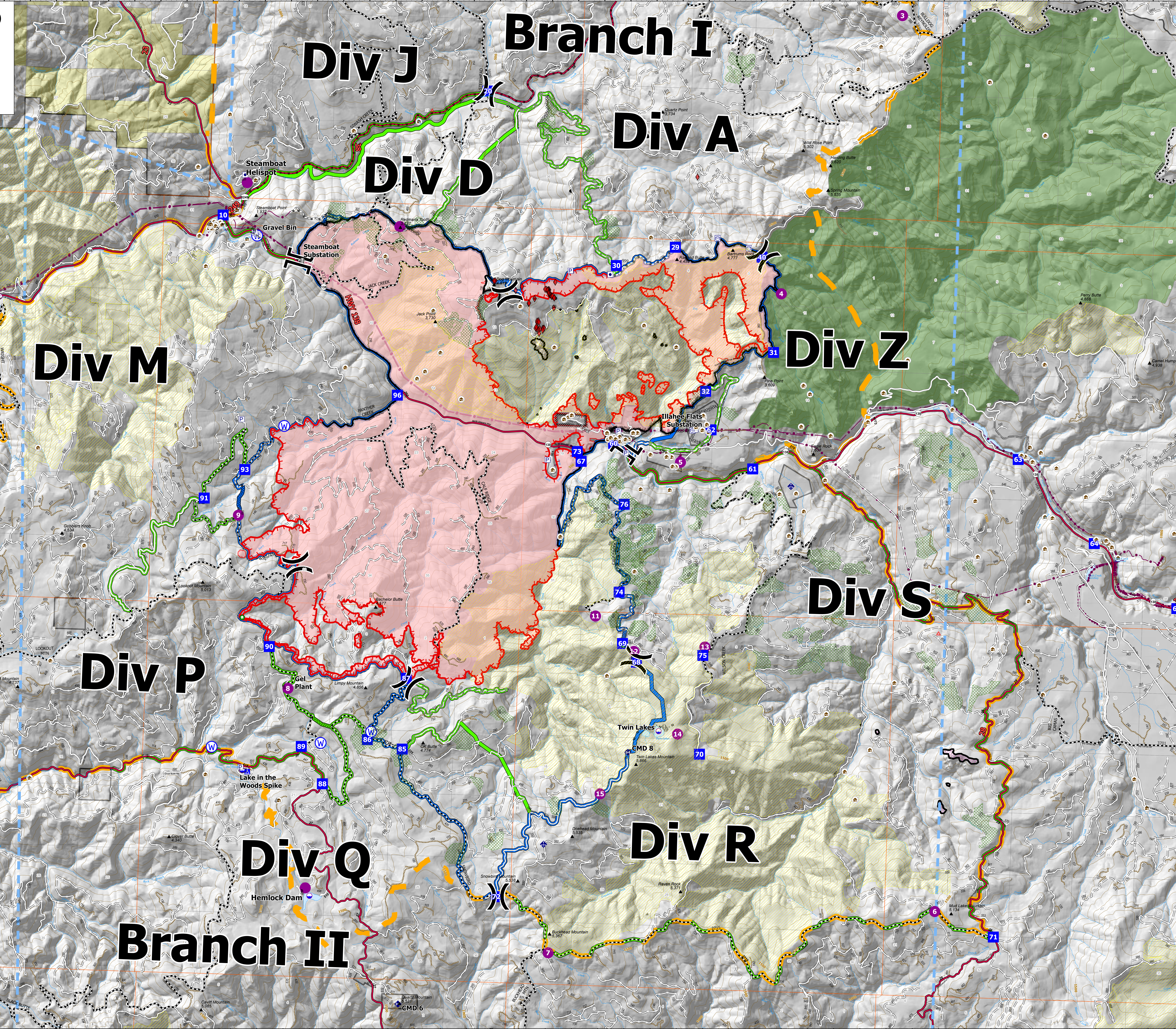
- Summit
 - JackFireStructures_pt
 - ATP
 - Other Property
 - Pump
 - Water Tank
 - Check Point
 - Dip Site
 - Mobile Retardant Base
 - Helispot
 - Sling Site
 - Division Break
 - Branch Break
 - Drop Point
 - Camp
 - Value at Risk
 - Structure Wrap
 - Hazard Tree
 - Mobile Weather Unit
 - Repeater
 - Water Source
 - Completed Dozer Line
 - Completed Road as Line
 - Planned Dozer Line
 - Planned Hand Line
 - Retardant Road as Line
 - Retardant Drop
 - Temporary Flight Restriction
 - Fire Edge
 - Contained Line
 - Wildfire Daily Fire Perimeter
 - Area Closure
 - Alternate
- Contingency
 - Utility Power Lines
 - Contours 100ft
 - Roadless Areas Invented
 - Timber Sale
 - Area to Protect (ATP)
 - BLM
 - PV
 - <call other values>
 - Wilderness
 - Protected Section
 - Section
 - Township
- HIFL Roads
 - Primary Highway
 - Secondary Highway
 - Paved Roads
 - Dirt (Not Paved)
 - Interstate Not Paved
 - US Route Not Paved
 - A - Arterial
 - C - Collector
 - Forest Service Roads
 - Paved Road
 - Gravel Road
 - Dirt Roads
 - Unimproved Roads
 - Closed Roads
 - UnSpecified
 - <call other values>



NW Team 9
7/17/2021 0841
Acres from IR
North America
Datum: LatLong
Grid

Point Type	Label	Latitude WGS84	Longitude WGS84
Branch Break	Branch 11	43° 20' 12.2" N	122° 41' 00.0" W
Branch Break	Branch 12	43° 20' 12.2" N	122° 36' 31.4" W
Branch Break	Branch 13	43° 20' 12.2" N	122° 32' 02.8" W
Branch Break	Branch 14	43° 20' 12.2" N	122° 27' 34.2" W
Branch Break	Branch 15	43° 20' 12.2" N	122° 23' 05.6" W
Branch Break	Branch 16	43° 20' 12.2" N	122° 18' 37.0" W
Branch Break	Branch 17	43° 20' 12.2" N	122° 14' 08.4" W
Branch Break	Branch 18	43° 20' 12.2" N	122° 9' 39.8" W
Branch Break	Branch 19	43° 20' 12.2" N	122° 5' 11.2" W
Branch Break	Branch 20	43° 20' 12.2" N	122° 0' 42.6" W
Branch Break	Branch 21	43° 20' 12.2" N	122° 0' 14.0" W
Branch Break	Branch 22	43° 20' 12.2" N	122° 0' 45.4" W
Branch Break	Branch 23	43° 20' 12.2" N	122° 1' 16.8" W
Branch Break	Branch 24	43° 20' 12.2" N	122° 1' 48.2" W
Branch Break	Branch 25	43° 20' 12.2" N	122° 2' 19.6" W
Branch Break	Branch 26	43° 20' 12.2" N	122° 2' 51.0" W
Branch Break	Branch 27	43° 20' 12.2" N	122° 3' 22.4" W
Branch Break	Branch 28	43° 20' 12.2" N	122° 3' 53.8" W
Branch Break	Branch 29	43° 20' 12.2" N	122° 4' 25.2" W
Branch Break	Branch 30	43° 20' 12.2" N	122° 4' 56.6" W
Branch Break	Branch 31	43° 20' 12.2" N	122° 5' 28.0" W
Branch Break	Branch 32	43° 20' 12.2" N	122° 5' 59.4" W
Branch Break	Branch 33	43° 20' 12.2" N	122° 6' 30.8" W
Branch Break	Branch 34	43° 20' 12.2" N	122° 7' 02.2" W
Branch Break	Branch 35	43° 20' 12.2" N	122° 7' 33.6" W
Branch Break	Branch 36	43° 20' 12.2" N	122° 8' 05.0" W
Branch Break	Branch 37	43° 20' 12.2" N	122° 8' 36.4" W
Branch Break	Branch 38	43° 20' 12.2" N	122° 9' 07.8" W
Branch Break	Branch 39	43° 20' 12.2" N	122° 9' 39.2" W
Branch Break	Branch 40	43° 20' 12.2" N	122° 10' 10.6" W
Branch Break	Branch 41	43° 20' 12.2" N	122° 10' 42.0" W
Branch Break	Branch 42	43° 20' 12.2" N	122° 11' 13.4" W
Branch Break	Branch 43	43° 20' 12.2" N	122° 11' 44.8" W
Branch Break	Branch 44	43° 20' 12.2" N	122° 12' 16.2" W
Branch Break	Branch 45	43° 20' 12.2" N	122° 12' 47.6" W
Branch Break	Branch 46	43° 20' 12.2" N	122° 13' 19.0" W
Branch Break	Branch 47	43° 20' 12.2" N	122° 13' 50.4" W
Branch Break	Branch 48	43° 20' 12.2" N	122° 14' 21.8" W
Branch Break	Branch 49	43° 20' 12.2" N	122° 14' 53.2" W
Branch Break	Branch 50	43° 20' 12.2" N	122° 15' 24.6" W
Branch Break	Branch 51	43° 20' 12.2" N	122° 15' 56.0" W
Branch Break	Branch 52	43° 20' 12.2" N	122° 16' 27.4" W
Branch Break	Branch 53	43° 20' 12.2" N	122° 16' 58.8" W
Branch Break	Branch 54	43° 20' 12.2" N	122° 17' 30.2" W
Branch Break	Branch 55	43° 20' 12.2" N	122° 18' 01.6" W
Branch Break	Branch 56	43° 20' 12.2" N	122° 18' 33.0" W
Branch Break	Branch 57	43° 20' 12.2" N	122° 19' 04.4" W
Branch Break	Branch 58	43° 20' 12.2" N	122° 19' 35.8" W
Branch Break	Branch 59	43° 20' 12.2" N	122° 20' 07.2" W
Branch Break	Branch 60	43° 20' 12.2" N	122° 20' 38.6" W
Branch Break	Branch 61	43° 20' 12.2" N	122° 21' 10.0" W
Branch Break	Branch 62	43° 20' 12.2" N	122° 21' 41.4" W
Branch Break	Branch 63	43° 20' 12.2" N	122° 22' 12.8" W
Branch Break	Branch 64	43° 20' 12.2" N	122° 22' 44.2" W
Branch Break	Branch 65	43° 20' 12.2" N	122° 23' 15.6" W
Branch Break	Branch 66	43° 20' 12.2" N	122° 23' 47.0" W
Branch Break	Branch 67	43° 20' 12.2" N	122° 24' 18.4" W
Branch Break	Branch 68	43° 20' 12.2" N	122° 24' 49.8" W
Branch Break	Branch 69	43° 20' 12.2" N	122° 25' 21.2" W
Branch Break	Branch 70	43° 20' 12.2" N	122° 25' 52.6" W
Branch Break	Branch 71	43° 20' 12.2" N	122° 26' 24.0" W
Branch Break	Branch 72	43° 20' 12.2" N	122° 26' 55.4" W
Branch Break	Branch 73	43° 20' 12.2" N	122° 27' 26.8" W
Branch Break	Branch 74	43° 20' 12.2" N	122° 27' 58.2" W
Branch Break	Branch 75	43° 20' 12.2" N	122° 28' 29.6" W
Branch Break	Branch 76	43° 20' 12.2" N	122° 29' 01.0" W
Branch Break	Branch 77	43° 20' 12.2" N	122° 29' 32.4" W
Branch Break	Branch 78	43° 20' 12.2" N	122° 30' 03.8" W
Branch Break	Branch 79	43° 20' 12.2" N	122° 30' 35.2" W
Branch Break	Branch 80	43° 20' 12.2" N	122° 31' 06.6" W
Branch Break	Branch 81	43° 20' 12.2" N	122° 31' 38.0" W
Branch Break	Branch 82	43° 20' 12.2" N	122° 32' 09.4" W
Branch Break	Branch 83	43° 20' 12.2" N	122° 32' 40.8" W
Branch Break	Branch 84	43° 20' 12.2" N	122° 33' 12.2" W
Branch Break	Branch 85	43° 20' 12.2" N	122° 33' 43.6" W
Branch Break	Branch 86	43° 20' 12.2" N	122° 34' 15.0" W
Branch Break	Branch 87	43° 20' 12.2" N	122° 34' 46.4" W
Branch Break	Branch 88	43° 20' 12.2" N	122° 35' 17.8" W
Branch Break	Branch 89	43° 20' 12.2" N	122° 35' 49.2" W
Branch Break	Branch 90	43° 20' 12.2" N	122° 36' 20.6" W
Branch Break	Branch 91	43° 20' 12.2" N	122° 36' 52.0" W
Branch Break	Branch 92	43° 20' 12.2" N	122° 37' 23.4" W
Branch Break	Branch 93	43° 20' 12.2" N	122° 37' 54.8" W
Branch Break	Branch 94	43° 20' 12.2" N	122° 38' 26.2" W
Branch Break	Branch 95	43° 20' 12.2" N	122° 38' 57.6" W
Branch Break	Branch 96	43° 20' 12.2" N	122° 39' 29.0" W
Branch Break	Branch 97	43° 20' 12.2" N	122° 40' 00.4" W
Branch Break	Branch 98	43° 20' 12.2" N	122° 40' 31.8" W
Branch Break	Branch 99	43° 20' 12.2" N	122° 41' 03.2" W
Branch Break	Branch 100	43° 20' 12.2" N	122° 41' 34.6" W

43° 01' 00" N to 43° 31' 00" N
122° 25' 00" W to 122° 51' 00" W



43° 01' 00" N to 43° 31' 00" N
122° 25' 00" W to 122° 51' 00" W