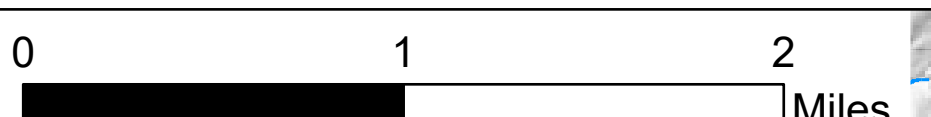


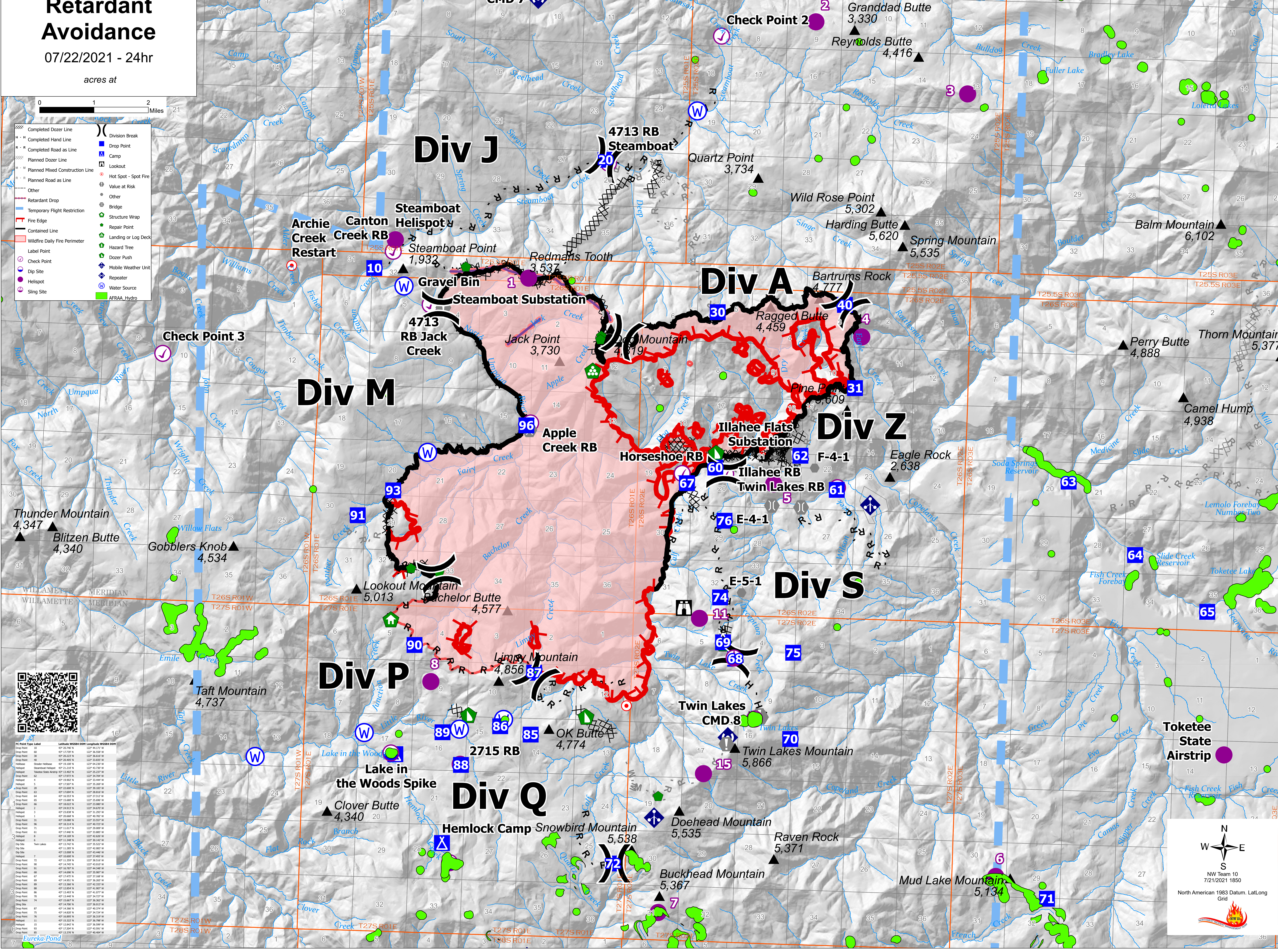
Retardant Avoidance

07/22/2021 - 24hr

acres at



- Completed Dozer Line
- Completed Hand Line
- Completed Road as Line
- Planned Dozer Line
- Planned Mixed Construction Line
- Planned Road as Line
- Other
- Retardant Drop
- Temporary Flight Restriction
- Fire Edge
- Contained Line
- Wildfire Daily Fire Perimeter
- Label Point
- Check Point
- Dip Site
- Helispot
- Sling Site
- Division Break
- Drop Point
- Camp
- Lookout
- Hot Spot - Spot Fire
- Value at Risk
- Other
- Bridge
- Structure Wrap
- Repair Point
- Landing or Log Deck
- Hazard Tree
- Dozer Push
- Repeater
- Mobile Weather Unit
- Water Source
- AFRAA Hydro



IC Point Type Label	Latitude WGS84	Longitude WGS84
Drop Point 05	47° 20' 46.00" N	122° 44' 11.00" W
Drop Point 06	47° 21' 29.00" N	122° 43' 58.00" W
Drop Point 08	47° 22' 23.00" N	122° 43' 46.00" W
Drop Point 09	47° 23' 05.00" N	122° 43' 34.00" W
Drop Point 10	47° 23' 48.00" N	122° 43' 22.00" W
Drop Point 11	47° 24' 31.00" N	122° 43' 10.00" W
Drop Point 12	47° 25' 14.00" N	122° 42' 58.00" W
Drop Point 13	47° 25' 57.00" N	122° 42' 46.00" W
Drop Point 14	47° 26' 40.00" N	122° 42' 34.00" W
Drop Point 15	47° 27' 23.00" N	122° 42' 22.00" W
Drop Point 16	47° 28' 06.00" N	122° 42' 10.00" W
Drop Point 17	47° 28' 49.00" N	122° 41' 58.00" W
Drop Point 18	47° 29' 32.00" N	122° 41' 46.00" W
Drop Point 19	47° 30' 15.00" N	122° 41' 34.00" W
Drop Point 20	47° 30' 58.00" N	122° 41' 22.00" W
Drop Point 21	47° 31' 41.00" N	122° 41' 10.00" W
Drop Point 22	47° 32' 24.00" N	122° 40' 58.00" W
Drop Point 23	47° 33' 07.00" N	122° 40' 46.00" W
Drop Point 24	47° 33' 50.00" N	122° 40' 34.00" W
Drop Point 25	47° 34' 33.00" N	122° 40' 22.00" W
Drop Point 26	47° 35' 16.00" N	122° 40' 10.00" W
Drop Point 27	47° 35' 59.00" N	122° 39' 58.00" W
Drop Point 28	47° 36' 42.00" N	122° 39' 46.00" W
Drop Point 29	47° 37' 25.00" N	122° 39' 34.00" W
Drop Point 30	47° 38' 08.00" N	122° 39' 22.00" W
Drop Point 31	47° 38' 51.00" N	122° 39' 10.00" W
Drop Point 32	47° 39' 34.00" N	122° 38' 58.00" W
Drop Point 33	47° 40' 17.00" N	122° 38' 46.00" W
Drop Point 34	47° 41' 00.00" N	122° 38' 34.00" W
Drop Point 35	47° 41' 43.00" N	122° 38' 22.00" W
Drop Point 36	47° 42' 26.00" N	122° 38' 10.00" W
Drop Point 37	47° 43' 09.00" N	122° 37' 58.00" W
Drop Point 38	47° 43' 52.00" N	122° 37' 46.00" W
Drop Point 39	47° 44' 35.00" N	122° 37' 34.00" W
Drop Point 40	47° 45' 18.00" N	122° 37' 22.00" W
Drop Point 41	47° 46' 01.00" N	122° 37' 10.00" W
Drop Point 42	47° 46' 44.00" N	122° 36' 58.00" W
Drop Point 43	47° 47' 27.00" N	122° 36' 46.00" W
Drop Point 44	47° 48' 10.00" N	122° 36' 34.00" W
Drop Point 45	47° 48' 53.00" N	122° 36' 22.00" W
Drop Point 46	47° 49' 36.00" N	122° 36' 10.00" W
Drop Point 47	47° 50' 19.00" N	122° 35' 58.00" W
Drop Point 48	47° 51' 02.00" N	122° 35' 46.00" W
Drop Point 49	47° 51' 45.00" N	122° 35' 34.00" W
Drop Point 50	47° 52' 28.00" N	122° 35' 22.00" W
Drop Point 51	47° 53' 11.00" N	122° 35' 10.00" W
Drop Point 52	47° 53' 54.00" N	122° 34' 58.00" W
Drop Point 53	47° 54' 37.00" N	122° 34' 46.00" W
Drop Point 54	47° 55' 20.00" N	122° 34' 34.00" W
Drop Point 55	47° 56' 03.00" N	122° 34' 22.00" W
Drop Point 56	47° 56' 46.00" N	122° 34' 10.00" W
Drop Point 57	47° 57' 29.00" N	122° 33' 58.00" W
Drop Point 58	47° 58' 12.00" N	122° 33' 46.00" W
Drop Point 59	47° 58' 55.00" N	122° 33' 34.00" W
Drop Point 60	47° 59' 38.00" N	122° 33' 22.00" W
Drop Point 61	47° 60' 21.00" N	122° 33' 10.00" W
Drop Point 62	47° 61' 04.00" N	122° 32' 58.00" W
Drop Point 63	47° 61' 47.00" N	122° 32' 46.00" W
Drop Point 64	47° 62' 30.00" N	122° 32' 34.00" W
Drop Point 65	47° 63' 13.00" N	122° 32' 22.00" W
Drop Point 66	47° 63' 56.00" N	122° 32' 10.00" W
Drop Point 67	47° 64' 39.00" N	122° 31' 58.00" W
Drop Point 68	47° 65' 22.00" N	122° 31' 46.00" W
Drop Point 69	47° 66' 05.00" N	122° 31' 34.00" W
Drop Point 70	47° 66' 48.00" N	122° 31' 22.00" W
Drop Point 71	47° 67' 31.00" N	122° 31' 10.00" W
Drop Point 72	47° 68' 14.00" N	122° 30' 58.00" W
Drop Point 73	47° 68' 57.00" N	122° 30' 46.00" W
Drop Point 74	47° 69' 40.00" N	122° 30' 34.00" W
Drop Point 75	47° 70' 23.00" N	122° 30' 22.00" W
Drop Point 76	47° 71' 06.00" N	122° 30' 10.00" W
Drop Point 77	47° 71' 49.00" N	122° 29' 58.00" W
Drop Point 78	47° 72' 32.00" N	122° 29' 46.00" W
Drop Point 79	47° 73' 15.00" N	122° 29' 34.00" W
Drop Point 80	47° 73' 58.00" N	122° 29' 22.00" W
Drop Point 81	47° 74' 41.00" N	122° 29' 10.00" W
Drop Point 82	47° 75' 24.00" N	122° 28' 58.00" W
Drop Point 83	47° 76' 07.00" N	122° 28' 46.00" W
Drop Point 84	47° 76' 50.00" N	122° 28' 34.00" W
Drop Point 85	47° 77' 33.00" N	122° 28' 22.00" W
Drop Point 86	47° 78' 16.00" N	122° 28' 10.00" W
Drop Point 87	47° 78' 59.00" N	122° 27' 58.00" W
Drop Point 88	47° 79' 42.00" N	122° 27' 46.00" W
Drop Point 89	47° 80' 25.00" N	122° 27' 34.00" W
Drop Point 90	47° 81' 08.00" N	122° 27' 22.00" W
Drop Point 91	47° 81' 51.00" N	122° 27' 10.00" W
Drop Point 92	47° 82' 34.00" N	122° 26' 58.00" W
Drop Point 93	47° 83' 17.00" N	122° 26' 46.00" W
Drop Point 94	47° 84' 00.00" N	122° 26' 34.00" W
Drop Point 95	47° 84' 43.00" N	122° 26' 22.00" W
Drop Point 96	47° 85' 26.00" N	122° 26' 10.00" W
Drop Point 97	47° 86' 09.00" N	122° 25' 58.00" W
Drop Point 98	47° 86' 52.00" N	122° 25' 46.00" W
Drop Point 99	47° 87' 35.00" N	122° 25' 34.00" W
Drop Point 100	47° 88' 18.00" N	122° 25' 22.00" W

North American 1983 Datum, Lat/Long Grid

NW Team 10
7/21/2021 1850