

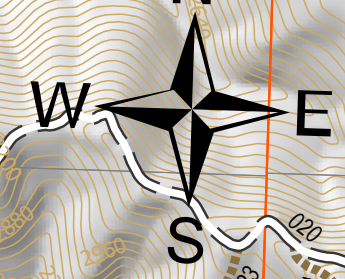
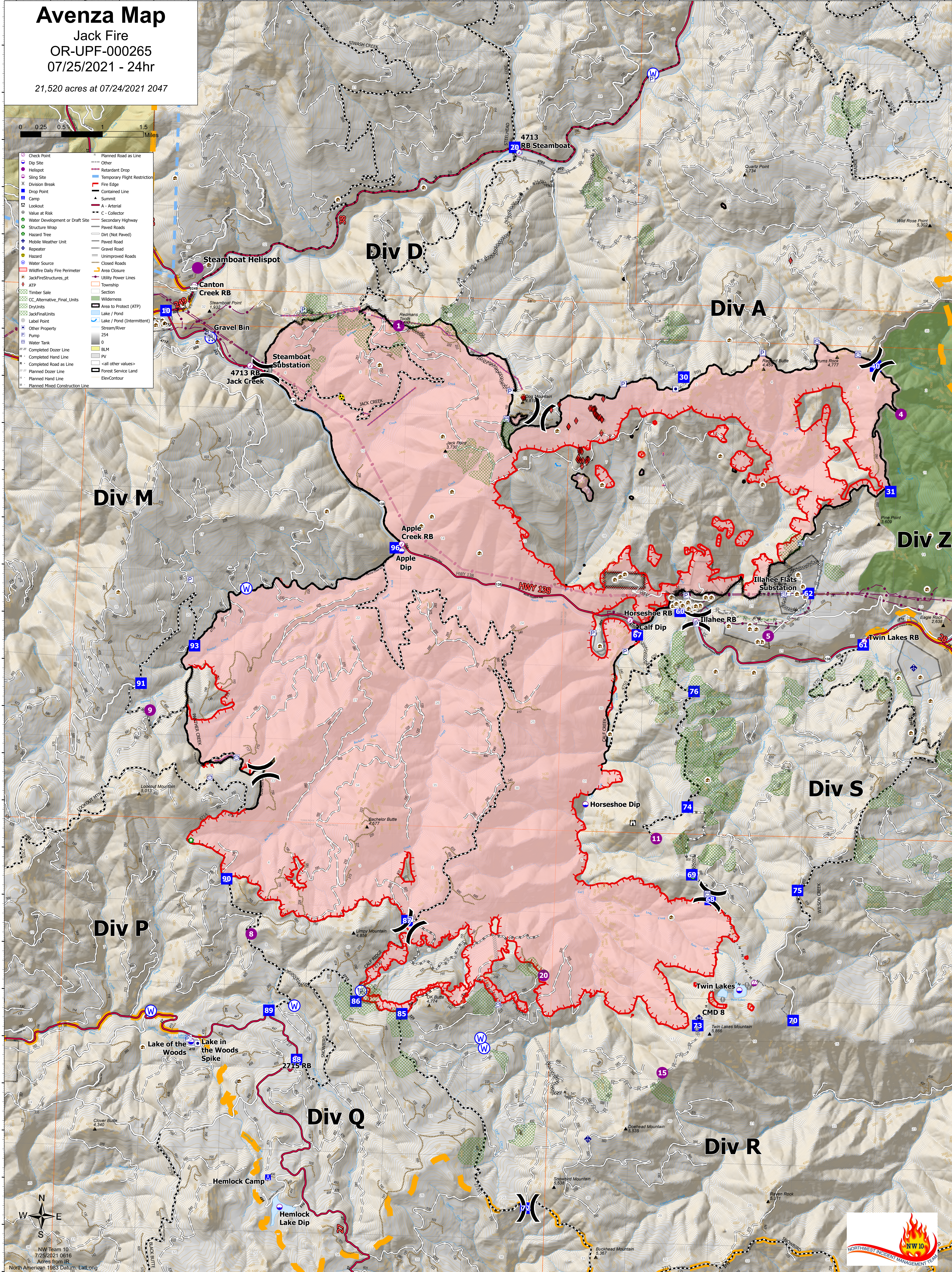
Avenza Map

Jack Fire
OR-UPF-000265
07/25/2021 - 24hr

21,520 acres at 07/24/2021 2047



- Check Point
- Dip Site
- Helispot
- Sling Site
- Division Break
- Drop Point
- Camp
- Lookout
- Value at Risk
- Water Development or Draft Site
- Structure Wrap
- Hazard Tree
- Mobile Weather Unit
- Repeater
- Hazard
- Water Source
- Wildfire Daily Fire Perimeter
- JackFireStructures_pt
- ATP
- Timber Sale
- CC_Alternative_Final_Units
- DryUnits
- JackFinalUnits
- Label Point
- Other Property
- Pump
- Water Tank
- Completed Dozer Line
- Completed Hand Line
- Completed Road as Line
- Planned Dozer Line
- Planned Hand Line
- Planned Mixed Construction Line
- Planned Road as Line
- Other
- Retardant Drop
- Temporary Flight Restriction
- Fire Edge
- Contained Line
- Summit
- A - Arterial
- C - Collector
- Secondary Highway
- Paved Roads
- Dirt (Not Paved)
- Paved Road
- Gravel Road
- Unimproved Roads
- Closed Roads
- Utility Power Lines
- Township
- Section
- Wilderness
- Area to Protect (ATP)
- Lake / Pond
- Lake / Pond (Intermittent)
- Stream/River
- 254
- 0
- BLM
- PV
- <all other values>
- Forest Service Land
- ElevContour



NW Team 10
7/25/2021 0616
Acres from IR
North American 1983 Datum Lallong

