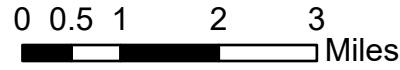


IAP Map

Jack Fire
OR-UPF-000265

19,956 acres at 07/22/2021 2109

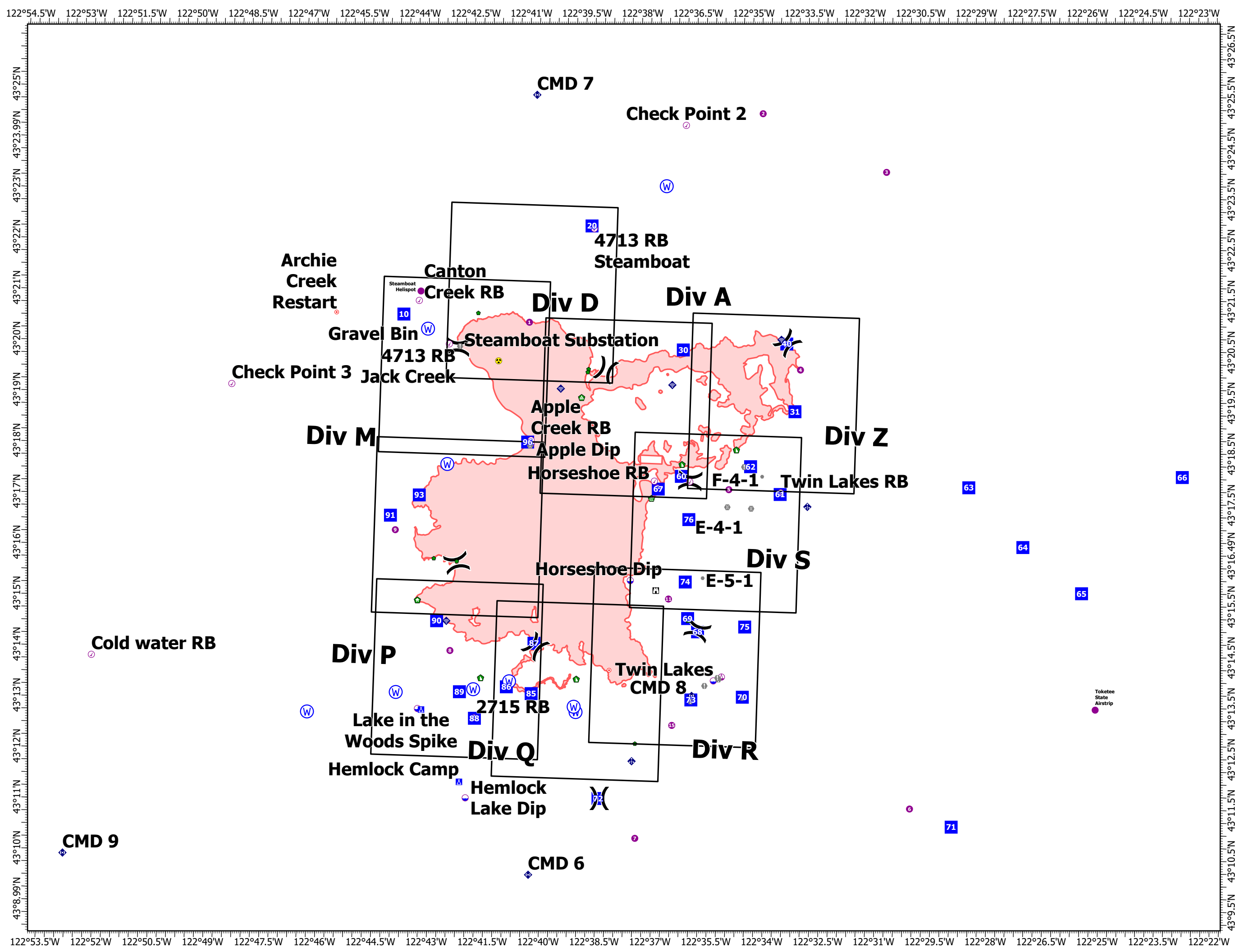


Temperature:	91°
Relative Humidity:	22%
Wind Direction:	NW
Wind Speed:	4-6 mph Gust 16



7/24/2021 2016

North American 1983 Datum. LatLong Grid

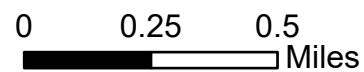


IAP Map

Jack Fire
OR-UPF-000265

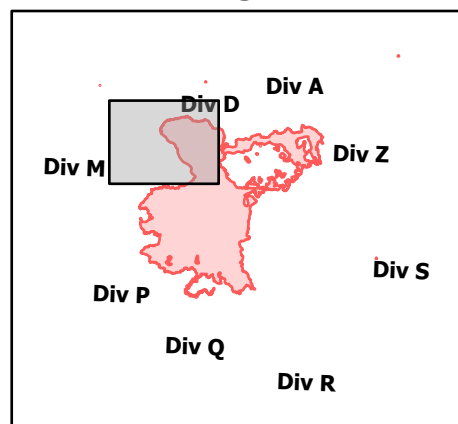
07/25/2021 - 24hr

19,956 acres at 07/22/2021 2109



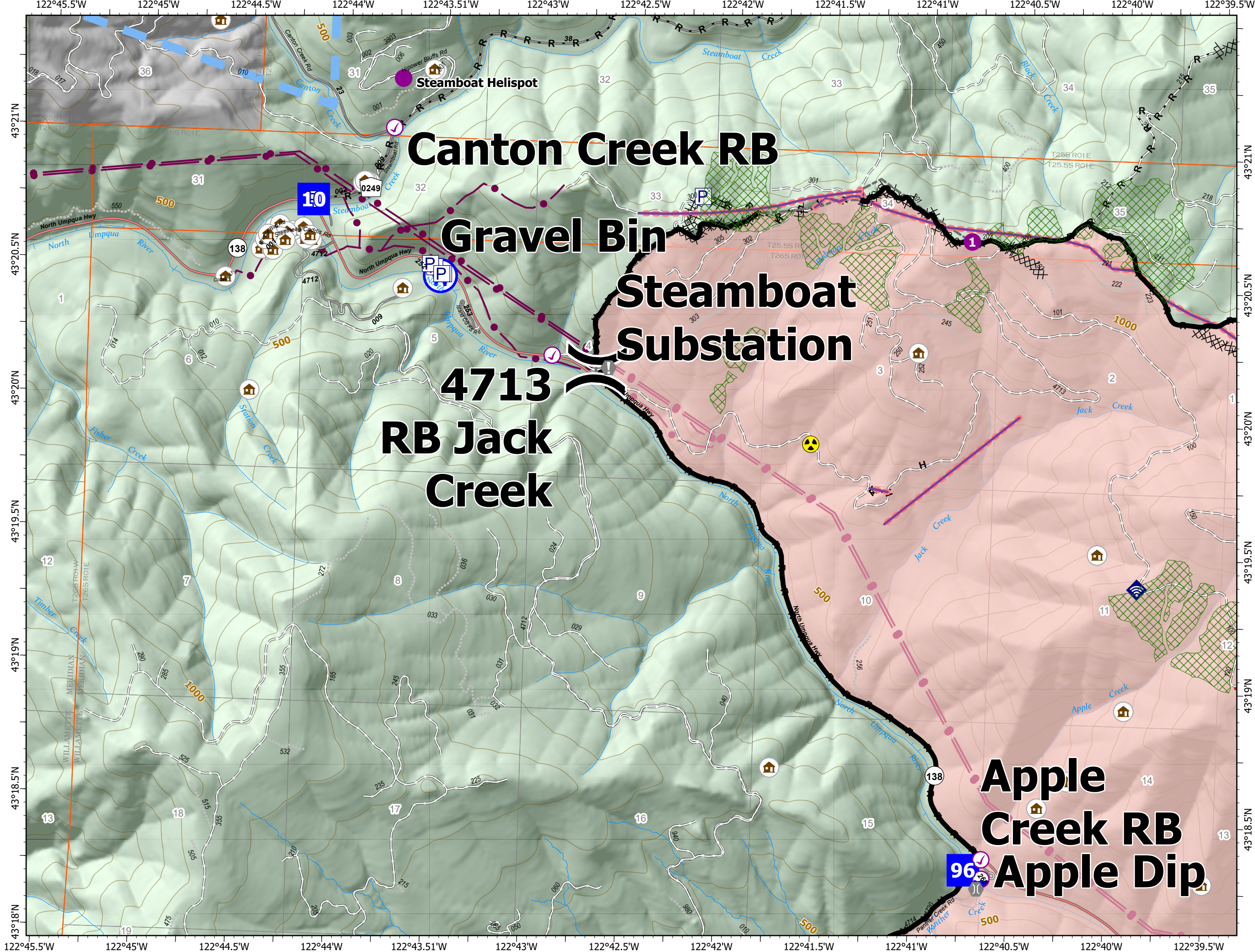
- Check Point
- Dip Site
- Helispot
- Division Break
- Drop Point
- Value at Risk
- Bridge
- Repair Point
- Landing or Log Deck
- Internet Access
- Hazard
- Water Source
- Completed Dozer Line
- Completed Hand Line
- Completed Road as Line
- Other
- Retardant Drop
- Temporary Flight Restriction
- Fire Edge
- Contained Line
- Other
- Prescribed Fire
- Wildfire Daily Fire Perimeter
- Utility Power Lines
- JackFireStructures_pt
- Timber Sale
- Wilderness
- ATP
- Area to Protect (ATP)

Page Number: 1



7/24/2021 2019

North American 1983 Datum. LatLong Grid

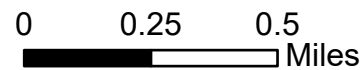


IAP Map

Jack Fire
OR-UPF-000265

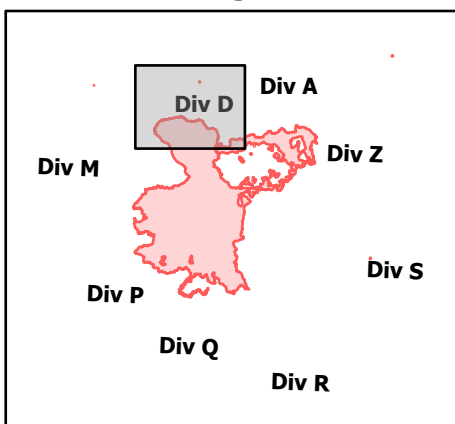
07/25/2021 - 24hr

19,956 acres at 07/22/2021 2109



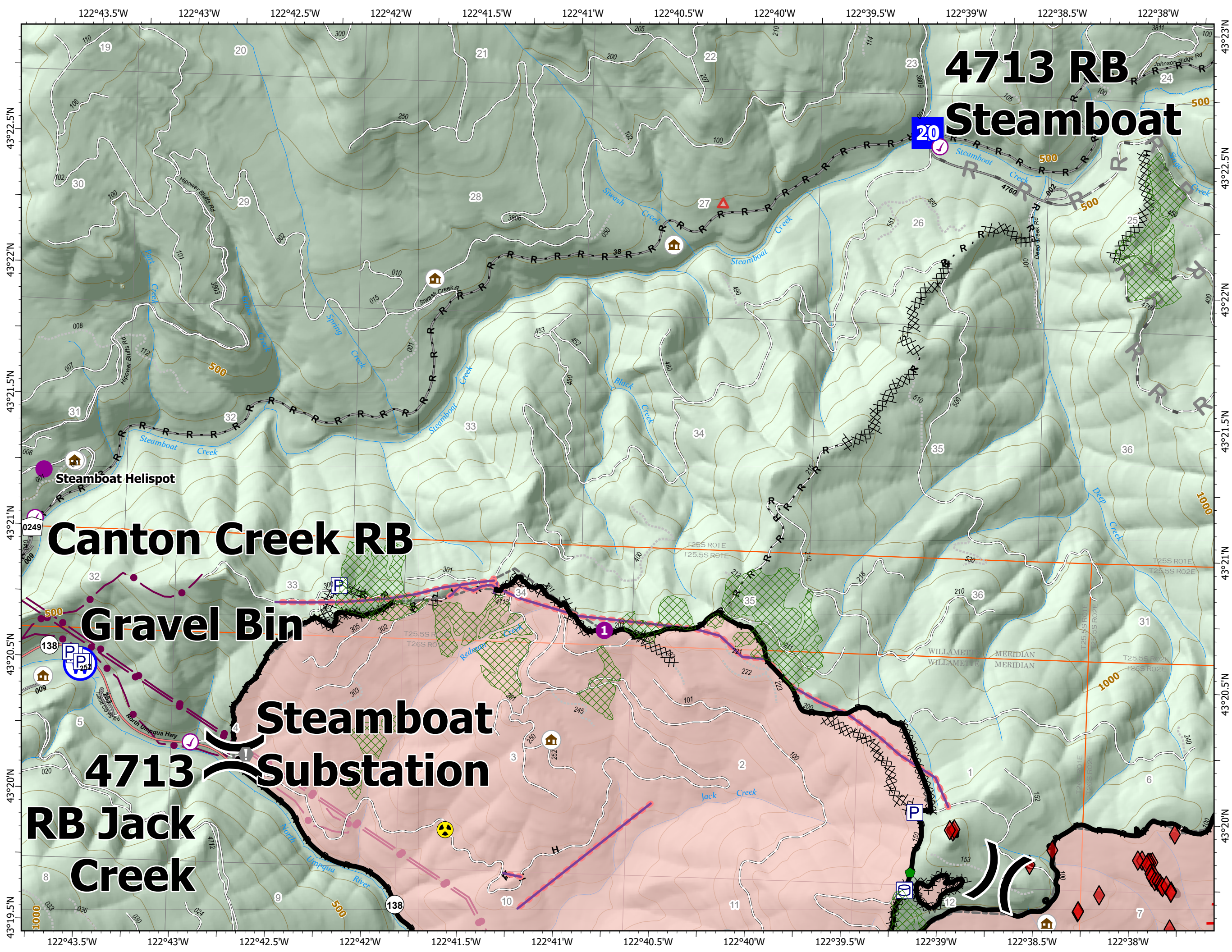
- ✓ Check Point
- Helispot
-) (Division Break
- Drop Point
- ⚠ Value at Risk
- 🛠 Repair Point
- ☠ Hazard
- 🌊 Water Source
- ⌘ ⌘ Completed Dozer Line
- H - Completed Hand Line
- R - Completed Road as Line
- R Planned Road as Line
- Other
- 🔴 Retardant Drop
- 🔴 Fire Edge
- ▬ Contained Line
- ▭ Other
- 🔴 Prescribed Fire
- 🔴 Wildfire Daily Fire Perimeter
- 🔴 Utility Power Lines
- 🏠 JackFireStructures_pt
- 🌲 Timber Sale
- 🌲 Wilderness
- ⬠ ATP
- 🛡 Area to Protect (ATP)

Page Number: 2



7/24/2021 2019

North American 1983 Datum. LatLong Grid



4713 RB Steamboat

Canton Creek RB

Gravel Bin

Steamboat Substation

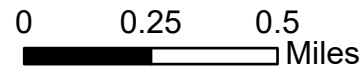
4713 RB Jack Creek

IAP Map

Jack Fire
OR-UPF-000265

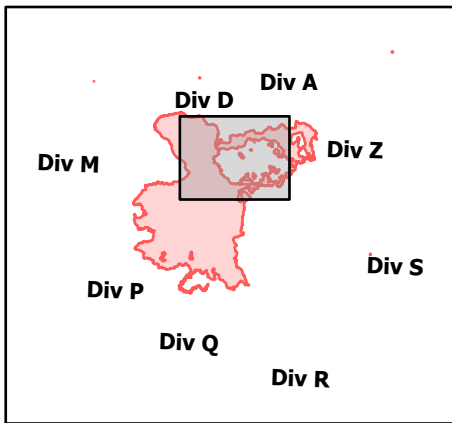
07/25/2021 - 24hr

19,956 acres at 07/22/2021 2109



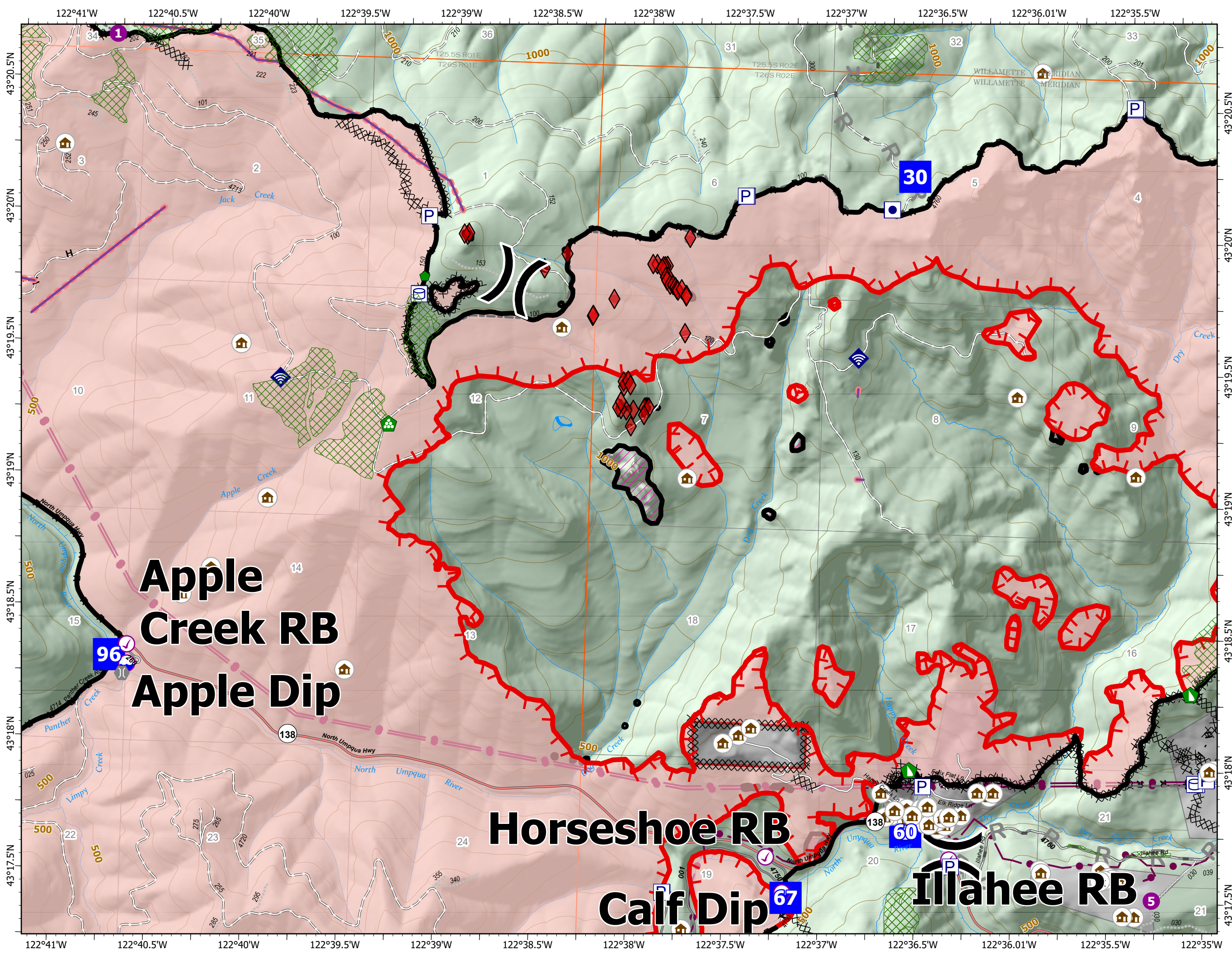
- Check Point
- Dip Site
- Helispot
- Division Break
- Drop Point
- ⚠ Value at Risk
- ⚡ Bridge
- 🌿 Water Development or Draft Site
- 🛠 Repair Point
- 🏠 Landing or Log Deck
- 🚧 Dozer Push
- 📶 Internet Access
- ⌘ Completed Dozer Line
- H Completed Hand Line
- R Completed Road as Line
- R Planned Road as Line
- Other
- 🚒 Retardant Drop
- 🔥 Fire Edge
- ⬜ Contained Line
- ⬜ Other
- 🔥 Prescribed Fire
- 🔴 Wildfire Daily Fire Perimeter
- ⚡ Utility Power Lines
- 🏠 JackFireStructures_pt
- 🌲 Timber Sale
- 🌿 Wilderness
- 🔴 ATP
- 🛡 Area to Protect (ATP)

Page Number: 3



7/24/2021 2019

North American 1983 Datum. LatLong Grid

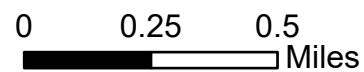


IAP Map

Jack Fire
OR-UPF-000265

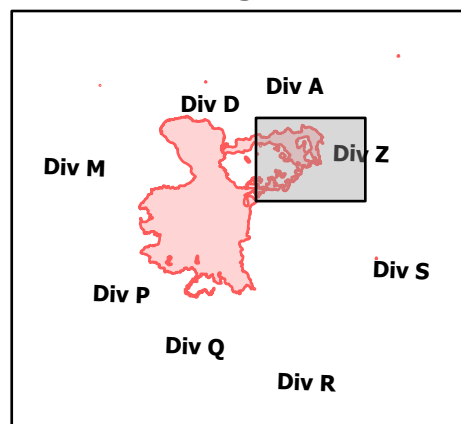
07/25/2021 - 24hr

19,956 acres at 07/22/2021 2109



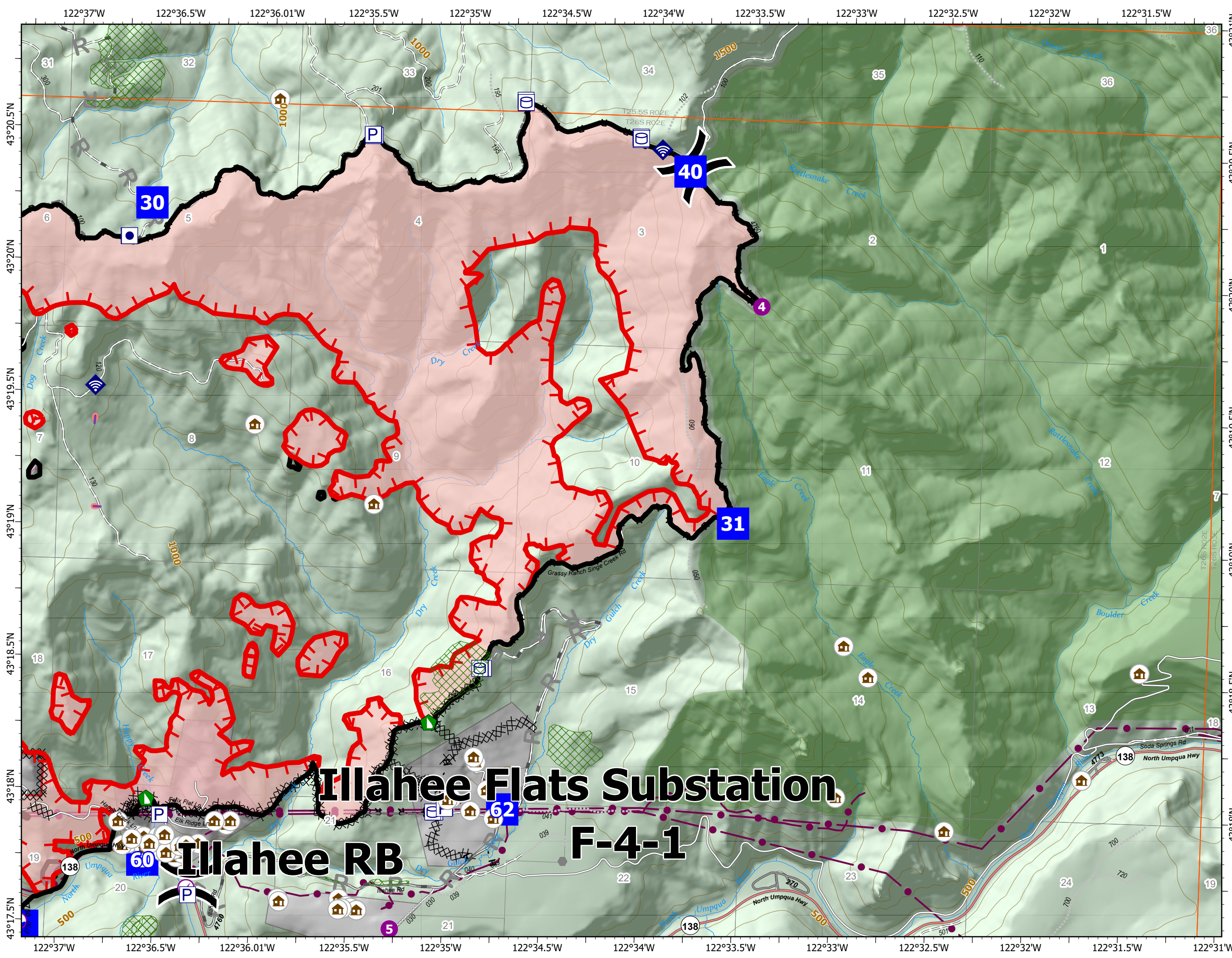
- Check Point
- Dip Site
- Helispot
-) (Division Break
- Drop Point
- ⚠ Value at Risk
- Other
- 🚧 Dozer Push
- 📶 Internet Access
- ⌘ Completed Dozer Line
- H - Completed Hand Line
- R - Completed Road as Line
- R Planned Road as Line
- Other
- 🚰 Retardant Drop
- 🔴 Fire Edge
- 🖤 Contained Line
- 🖤 Other
- 🔴 Prescribed Fire
- 🔴 Wildfire Daily Fire Perimeter
- ⚡ Utility Power Lines
- 🏠 JackFireStructures_pt
- 🌲 Timber Sale
- 🌲 Wilderness
- ⚠ ATP
- 🖤 Area to Protect (ATP)

Page Number: 4



7/24/2021 2020

North American 1983 Datum. LatLong Grid



Illahee Flats Substation

Illahee RB

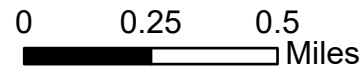
F-4-1

IAP Map

Jack Fire
OR-UPF-000265

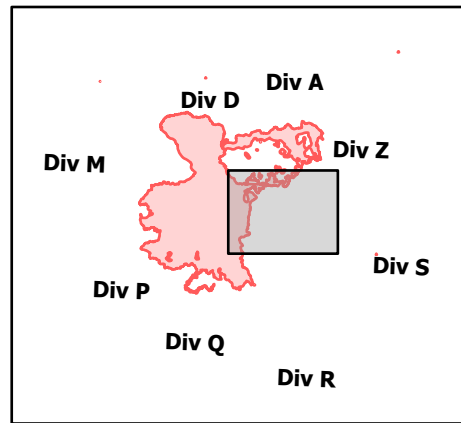
07/25/2021 - 24hr

19,956 acres at 07/22/2021 2109



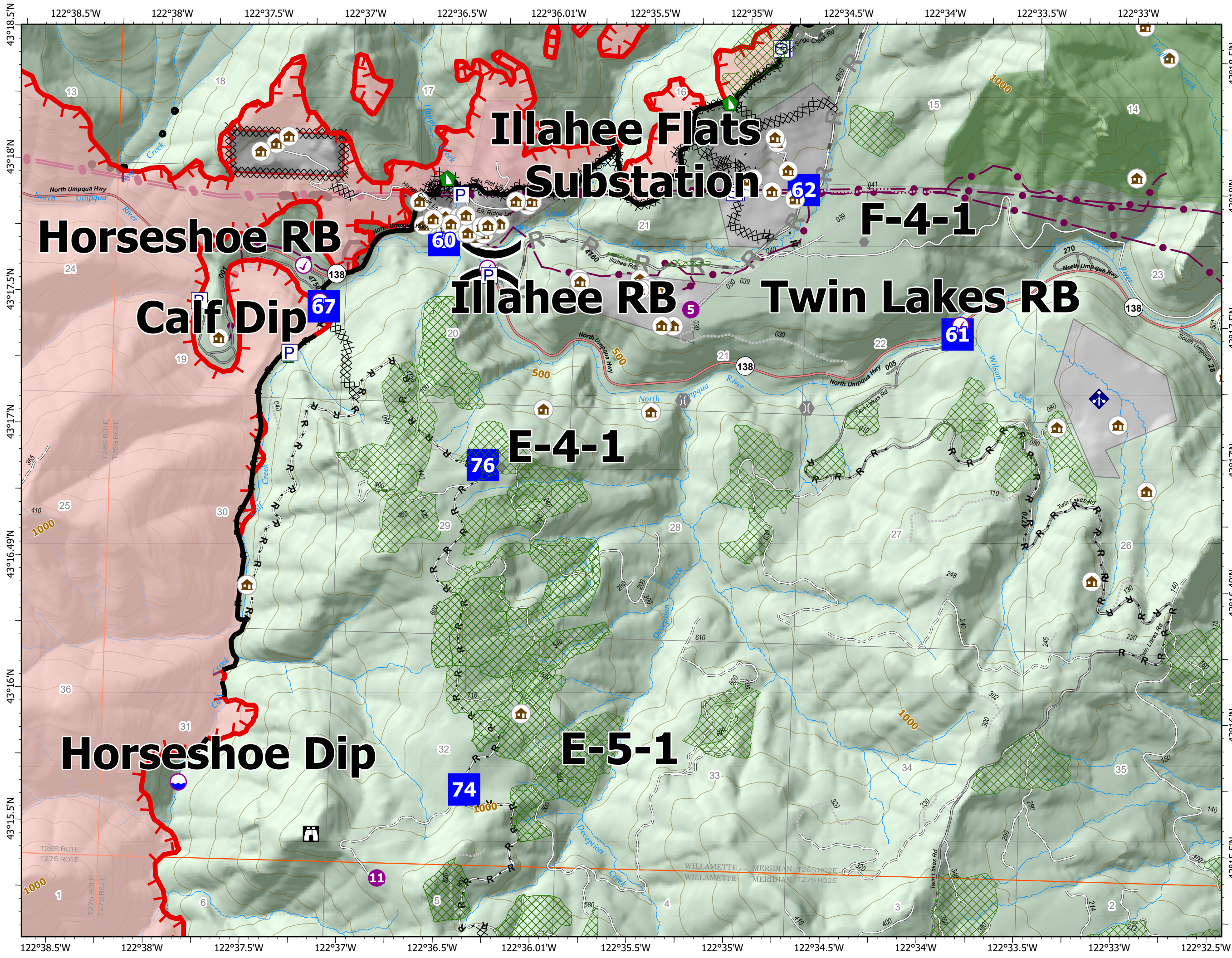
- Check Point
- Dip Site
- Helispot
- ⌋ Division Break
- Drop Point
- 🏠 Lookout
- ⚠ Value at Risk
- Other
- 🌉 Bridge
- 🏠 Water Development or Draft Site
- 🏠 Dozer Push
- 📡 Mobile Weather Unit
- ⌘ Completed Dozer Line
- ⌘ Completed Hand Line
- ⌘ Completed Road as Line
- ⌘ Planned Road as Line
- ⌘ Other
- 🔴 Fire Edge
- ⬛ Contained Line
- ⬜ Other
- 🟡 Prescribed Fire
- 🔴 Wildfire Daily Fire Perimeter
- 🟡 Utility Power Lines
- 🏠 JackFireStructures_pt
- 🌲 Timber Sale
- 🌲 Wilderness
- 🔴 ATP
- ⬛ Area to Protect (ATP)

Page Number: 5



7/24/2021 2020

North American 1983 Datum. LatLong Grid

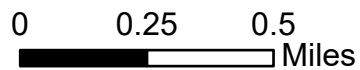


IAP Map

Jack Fire
OR-UPF-000265

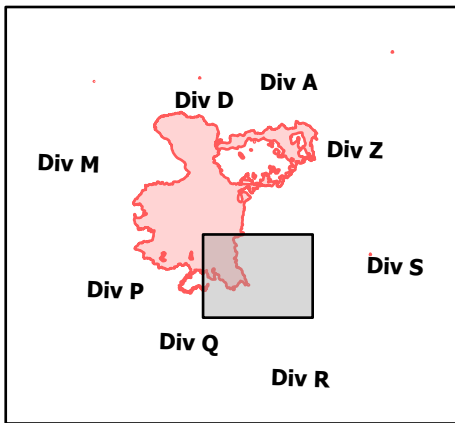
07/25/2021 - 24hr

19,956 acres at 07/22/2021 2109



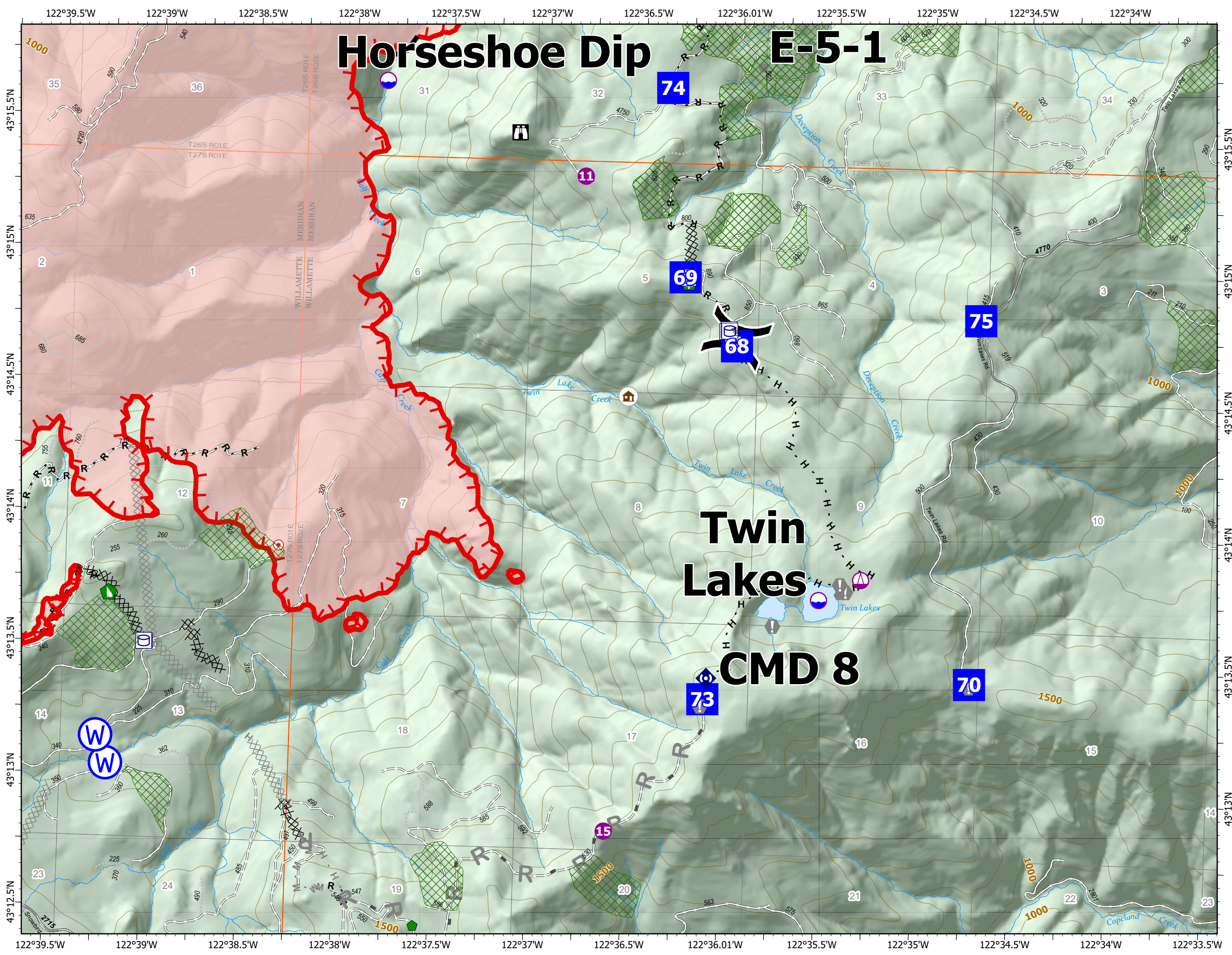
- Dip Site
- Helispot
- Sling Site
- Division Break
- Drop Point
- Lookout
- Hot Spot - Spot Fire
- Value at Risk
- Other
- Repair Point
- Hazard Tree
- Dozer Push
- Repeater
- Water Source
- Completed Dozer Line
- Completed Hand Line
- Completed Road as Line
- Planned Dozer Line
- Planned Hand Line
- Planned Mixed Construction Line
- Planned Road as Line
- Fire Edge
- Contained Line
- Other
- Prescribed Fire
- Wildfire Daily Fire Perimeter
- Utility Power Lines
- JackFireStructures_pt
- Timber Sale
- Wilderness
- ATP
- Area to Protect (ATP)

Page Number: 6



7/24/2021 2020

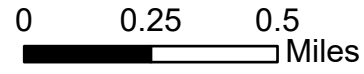
North American 1983 Datum. LatLong Grid



IAP Map

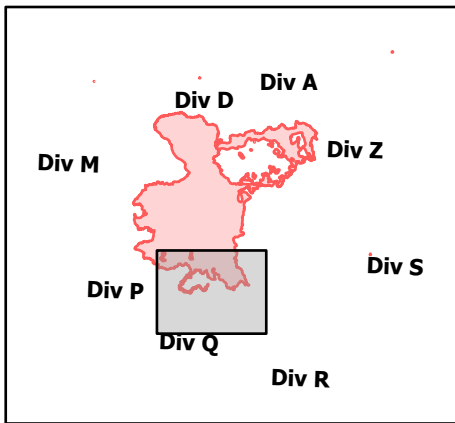
Jack Fire
OR-UPF-000265
07/25/2021 - 24hr

19,956 acres at 07/22/2021 2109



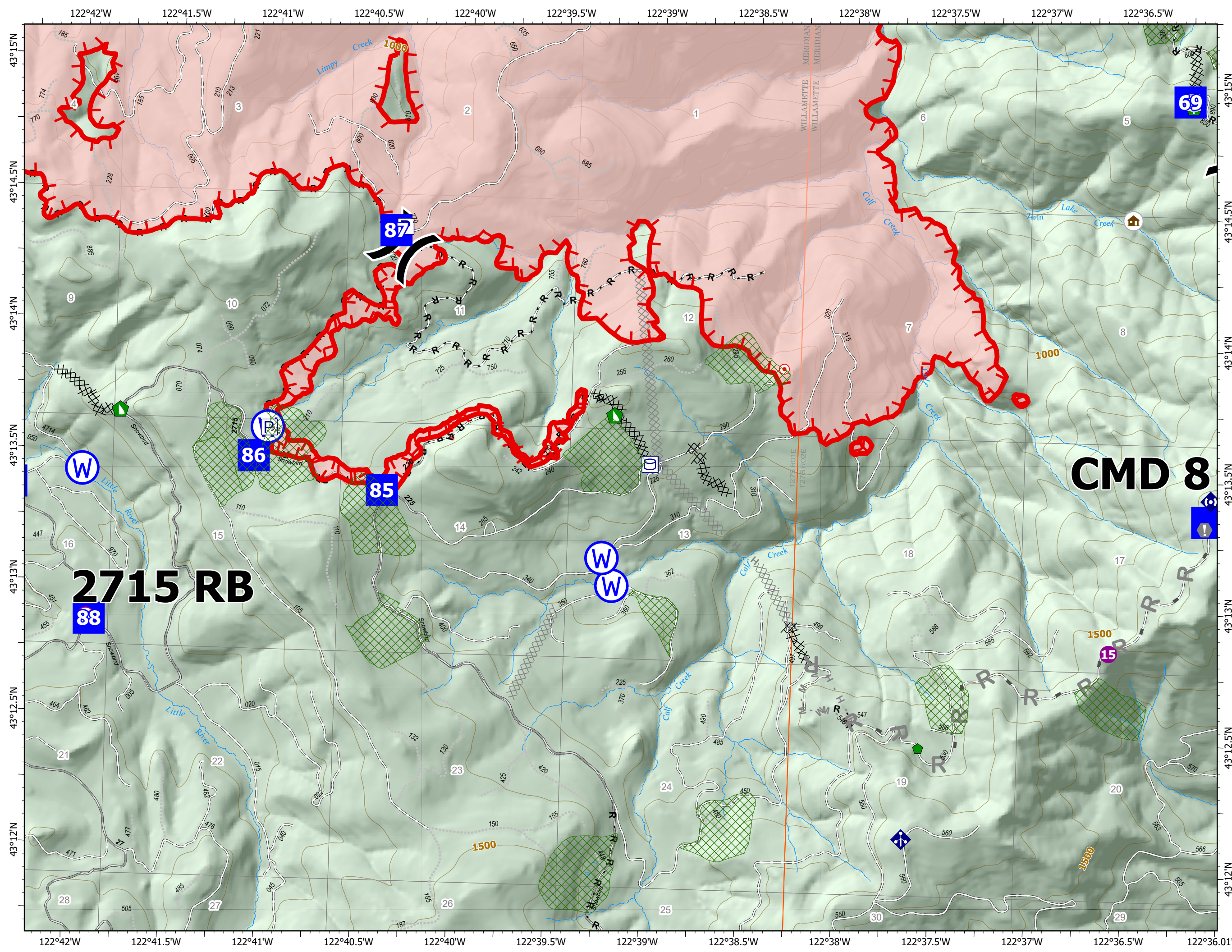
- Check Point
- Helispot
- ⊕ Sling Site
-) (Division Break
- Drop Point
- ⊠ Camp
- Hot Spot - Spot Fire
- ⊕ Value at Risk
- ⊕ Repair Point
- ⊕ Hazard Tree
- ⊕ Dozer Push
- ⊕ Mobile Weather Unit
- ⊕ Repeater
- ⊕ Water Source
- ⊗ Completed Dozer Line
- H Completed Hand Line
- R Completed Road as Line
- ⊗ Planned Dozer Line
- H Planned Hand Line
- M Planned Mixed Construction Line
- R Planned Road as Line
- Retardant Drop
- Fire Edge
- Other
- Prescribed Fire
- Wildfire Daily Fire Perimeter
- Utility Power Lines
- 🏠 JackFireStructures_pt
- ⊕ Timber Sale
- Wilderness
- ⊕ ATP
- Area to Protect (ATP)

Page Number: 7



7/24/2021 2020

North American 1983 Datum. LatLong Grid



CMD 8

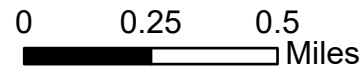
2715 RB

IAP Map

Jack Fire
OR-UPF-000265

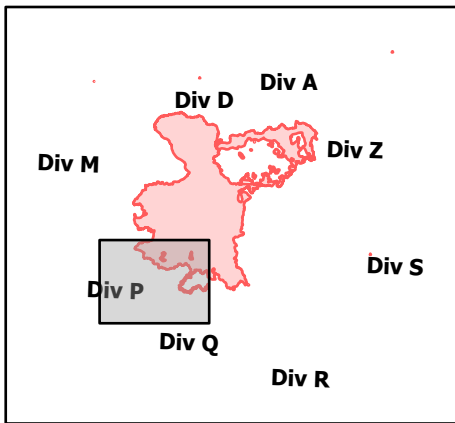
07/25/2021 - 24hr

19,956 acres at 07/22/2021 2109



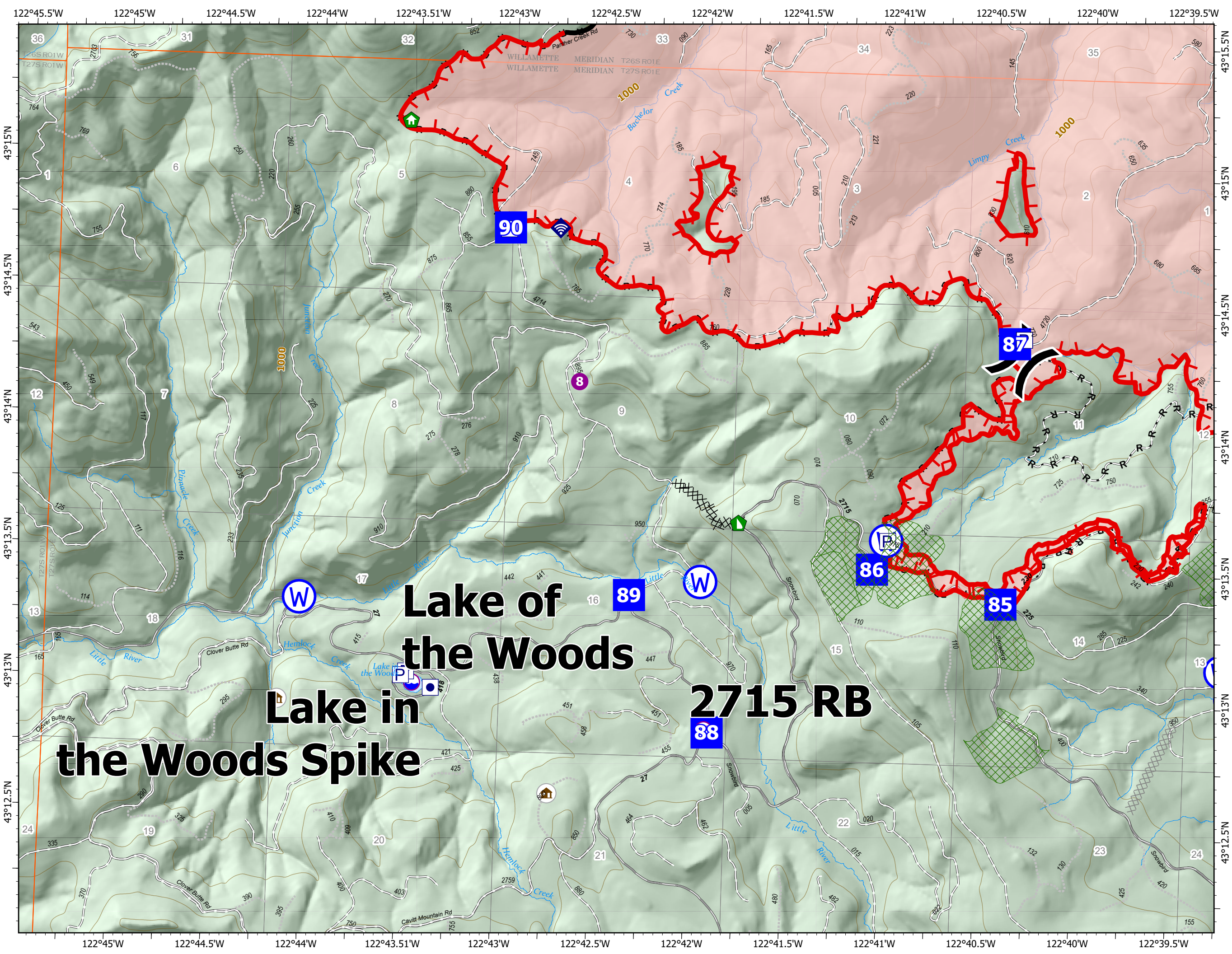
- Check Point
- Dip Site
- Helispot
-) (Division Break
- Drop Point
- ▲ Camp
- 🏠 Structure Wrap
- 🏠 Dozer Push
- 📶 Internet Access
- 🌊 Water Source
- ⌘ Completed Dozer Line
- H - Completed Hand Line
- R - Completed Road as Line
- ⌘ Planned Dozer Line
- 🚰 Retardant Drop
- 🔴 Fire Edge
- ▬ Contained Line
- ▬ Other
- 🔴 Prescribed Fire
- 🔴 Wildfire Daily Fire Perimeter
- ⚡ Utility Power Lines
- 🏠 JackFireStructures_pt
- 🌲 Timber Sale
- 🌲 Wilderness
- ⬠ ATP
- 🛡️ Area to Protect (ATP)

Page Number: 8



7/24/2021 2020

North American 1983 Datum. LatLong Grid

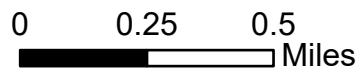


IAP Map

Jack Fire
OR-UPF-000265

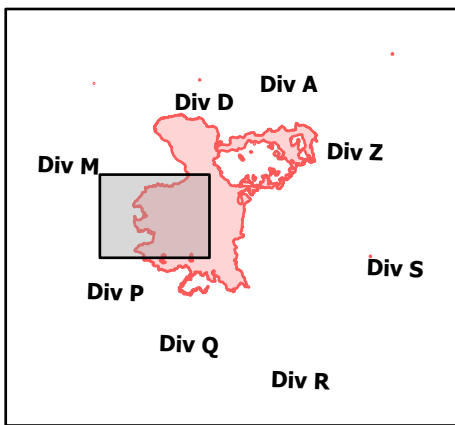
07/25/2021 - 24hr

19,956 acres at 07/22/2021 2109



- Check Point
- Dip Site
- Helispot
-) (Division Break
- Drop Point
- ⚖ Bridge
- 🏠 Structure Wrap
- 🛠 Repair Point
- 📶 Internet Access
- Ⓜ Water Source
- ⌘ Completed Dozer Line
- H - Completed Hand Line
- R - Completed Road as Line
- R Planned Road as Line
- 🚰 Retardant Drop
- 🔴 Fire Edge
- ⬛ Contained Line
- ⬜ Other
- 🟡 Prescribed Fire
- 🔴 Wildfire Daily Fire Perimeter
- ⚡ Utility Power Lines
- 🏠 JackFireStructures_pt
- 🌲 Timber Sale
- 🌿 Wilderness
- ⬠ ATP
- ⬠ Area to Protect (ATP)

Page Number: 9



7/24/2021 2020

North American 1983 Datum. LatLong Grid

