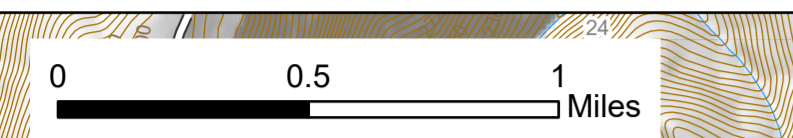


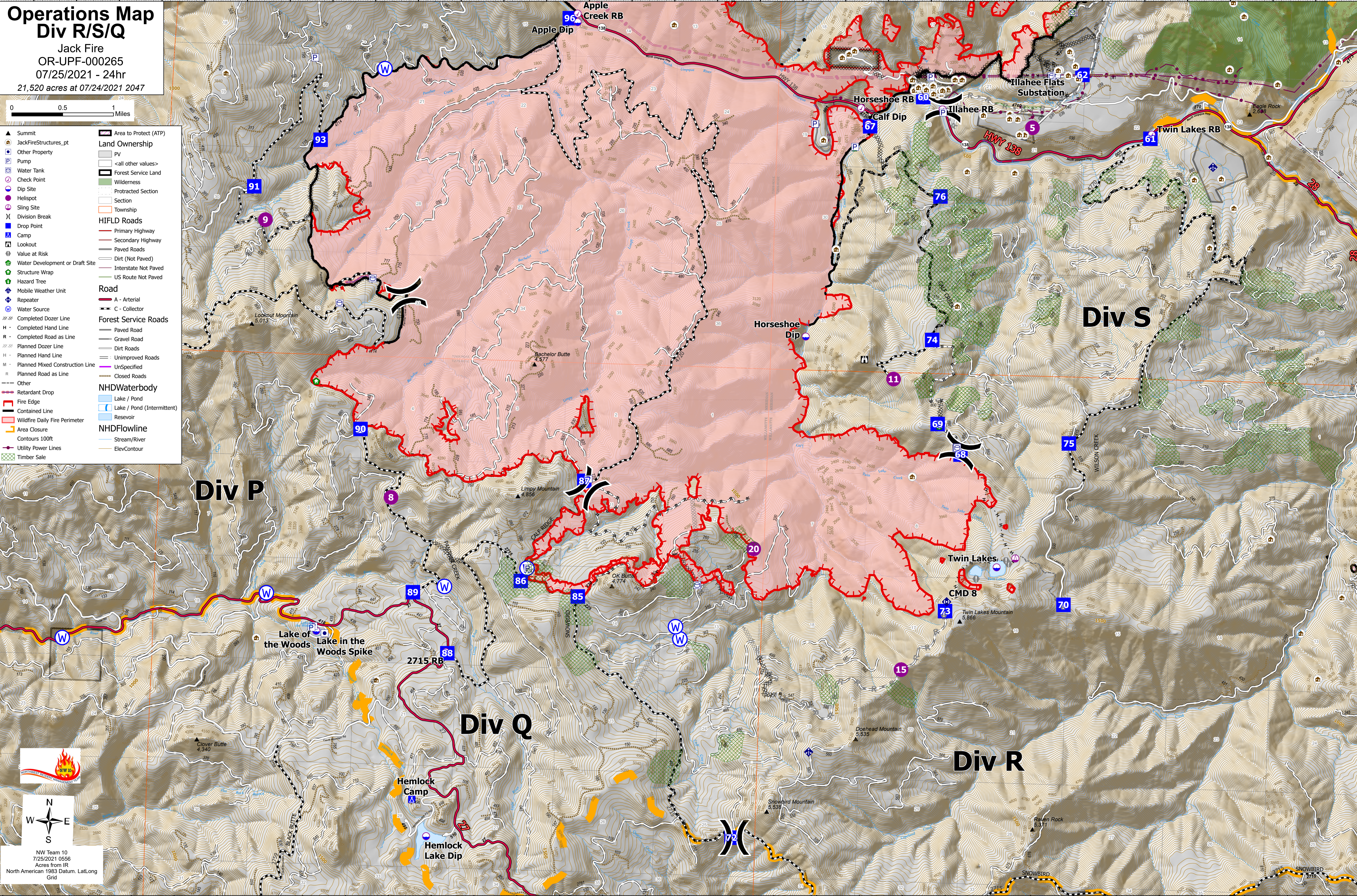
Operations Map Div R/S/Q

Jack Fire
OR-UPF-000265
07/25/2021 - 24hr
21,520 acres at 07/24/2021 2047



- Summit
 - JackFireStructures_pt
 - Other Property
 - Pump
 - Water Tank
 - Check Point
 - Dip Site
 - Helispot
 - Sling Site
 - Division Break
 - Drop Point
 - Camp
 - Lookout
 - Value at Risk
 - Water Development or Draft Site
 - Structure Wrap
 - Hazard Tree
 - Mobile Weather Unit
 - Repeater
 - Water Source
 - Completed Dozer Line
 - Completed Hand Line
 - Completed Road as Line
 - Planned Dozer Line
 - Planned Hand Line
 - Planned Mixed Construction Line
 - Planned Road as Line
 - Other
 - Retardant Drop
 - Fire Edge
 - Contained Line
 - Wildfire Daily Fire Perimeter
 - Area Closure
 - Contours 100ft
 - Utility Power Lines
 - Timber Sale
- Area to Protect (ATP)**
- PV
 - <all other values>
 - Forest Service Land
 - Wilderness
 - Protected Section
 - Section
 - Township
- HIFLD Roads**
- Primary Highway
 - Secondary Highway
 - Paved Roads
 - Dirt (Not Paved)
 - Interstate Not Paved
 - US Route Not Paved
- Road**
- A - Arterial
 - C - Collector
- Forest Service Roads**
- Paved Road
 - Gravel Road
 - Dirt Roads
 - Unimproved Roads
 - UnSpecified
 - Closed Roads
- NHDWaterbody**
- Lake / Pond
 - Lake / Pond (Intermittent)
 - Reservoir
- NHDFlowline**
- Stream/River
 - ElevContour

NW Team 10
7/25/2021 0556
Acres from IR
North American 1983 Datum, Lat/Long
Grid



122°47'W 122°46.5'W 122°46'W 122°45.5'W 122°45'W 122°44.5'W 122°44'W 122°43.5'W 122°43'W 122°42.5'W 122°42'W 122°41.5'W 122°41'W 122°40.5'W 122°40'W 122°39.5'W 122°39'W 122°38.5'W 122°38'W 122°37.5'W 122°37'W 122°36.5'W 122°36.01'W 122°35.5'W 122°35'W 122°34.5'W 122°34'W 122°33.5'W 122°33'W 122°32.5'W 122°32'W 122°31.5'W

43°18'N
43°17.5'N
43°17'N
43°16.49'N
43°16'N
43°15.5'N
43°15'N
43°14.5'N
43°14'N
43°13.5'N
43°13'N
43°12.5'N
43°12'N
43°11.5'N
43°11'N

43°18'N
43°17.5'N
43°17'N
43°16.49'N
43°16'N
43°15.5'N
43°15'N
43°14.5'N
43°14'N
43°13.5'N
43°13'N
43°12.5'N
43°12'N
43°11.5'N
43°11'N