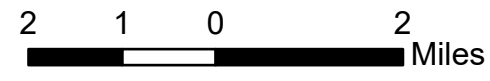


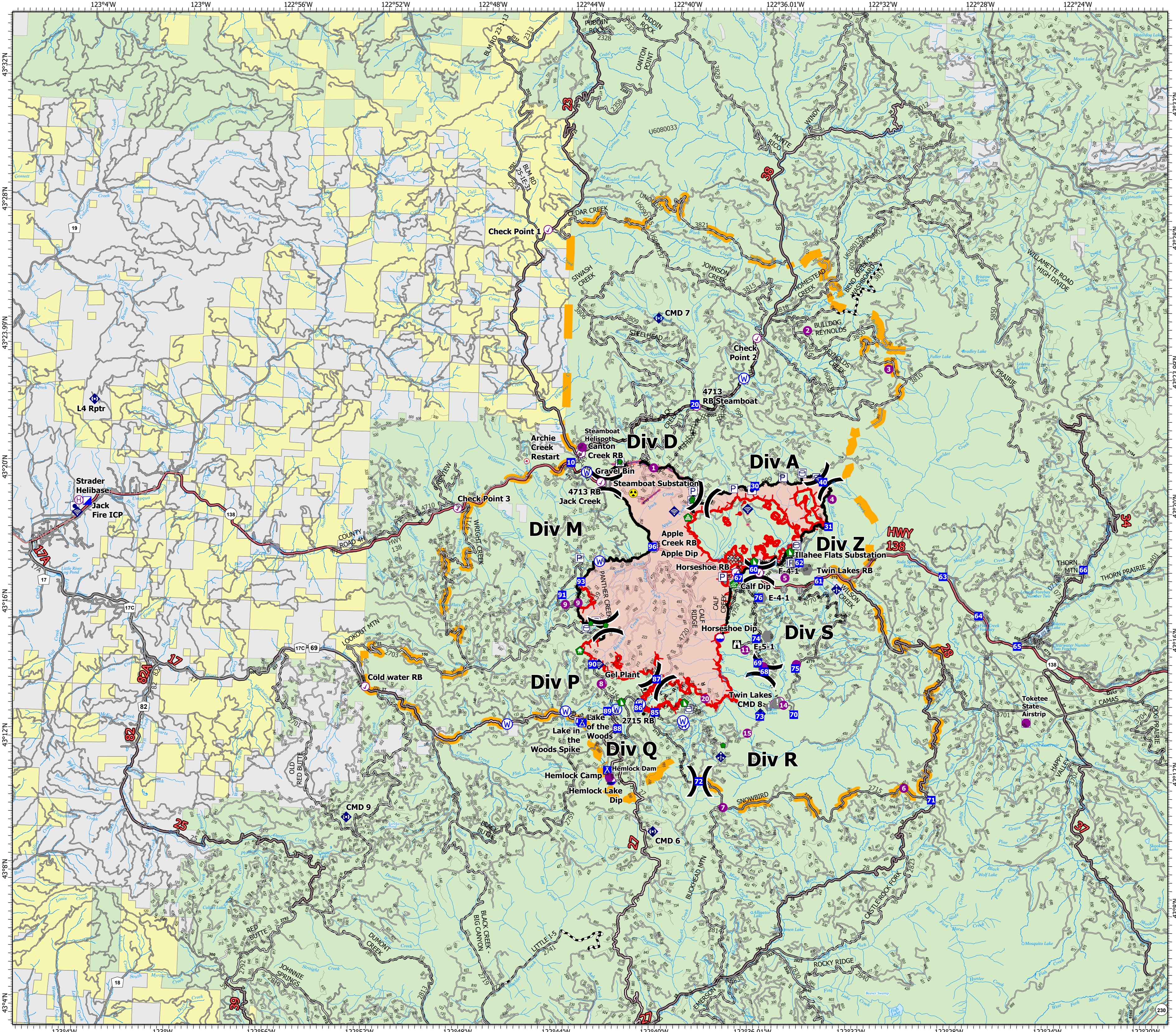
Transportation Map

Jack Fire
OR-UPF-000265
07/25/2021 - 24hr
19,956 acres at 07/22/2021 2109



- Wildfire Daily Fire Perimeter
- Check Point
- Dip Site
- Mobile Retardant Base
- Helispot
- Helibase
- Sling Site
- X Division Break
- Incident Command Post
- Drop Point
- Camp
- Lookout
- Hot Spot - Spot Fire
- Value at Risk
- Other
- Bridge
- Water Development or Draft Site
- Structure Wrap
- Repair Point
- Landing or Log Deck
- Hazard Tree
- Dozer Push
- ◆ Mobile Weather Unit
- ◆ Internet Access
- ◆ Repeater
- ◆ Hazard
- Water Source
- Other Property
- Pump
- Water Tank
- Completed Burnout
- Completed Dozer Line
- Completed Hand Line
- Completed Road as Line
- Planned Dozer Line
- Planned Hand Line
- Planned Mixed Construction Line
- Planned Road as Line
- Other
- Retardant Drop
- Fire Edge
- Contained Line
- Paved Road
- Gravel Road
- Dirt Roads
- Unimproved Roads
- Closed Roads
- Secondary Highway
- Paved Roads
- Dirt (Not Paved)
- Area Closure

FC Point Type	Label	Latitude WGS84 DDM	Longitude WGS84 DDM
Check Point	2715 RB	43° 12.864' N	122° 41.924' W
Check Point	4713 RB Jack Creek	43° 20.192' N	122° 42.919' W
Check Point	4713 RB Steamboat	43° 22.548' N	122° 39.116' W
Check Point	Apple Creek RB	43° 18.355' N	122° 40.634' W
Check Point	Canton Creek RB	43° 21.024' N	122° 43.767' W
Check Point	Check Point 1	43° 27.670' N	122° 45.432' W
Check Point	Check Point 2	43° 24.635' N	122° 36.729' W
Check Point	Check Point 3	43° 19.266' N	122° 48.737' W
Check Point	Cold water RB	43° 13.850' N	122° 52.257' W
Check Point	Horseshoe RB	43° 17.627' N	122° 37.280' W
Check Point	Illahee RB	43° 17.639' N	122° 36.327' W
Check Point	Twin Lakes RB	43° 17.481' N	122° 33.871' W
Drop Point	10	43° 20.746' N	122° 44.171' W
Drop Point	20	43° 22.600' N	122° 39.183' W
Drop Point	30	43° 20.223' N	122° 36.616' W
Drop Point	31	43° 19.080' N	122° 33.557' W
Drop Point	40	43° 20.405' N	122° 33.835' W
Drop Point	60	43° 17.739' N	122° 36.558' W
Drop Point	61	43° 17.446' N	122° 33.885' W
Drop Point	62	43° 17.973' N	122° 34.704' W
Drop Point	63	43° 17.694' N	122° 28.816' W
Drop Point	64	43° 16.553' N	122° 27.312' W
Drop Point	65	43° 15.680' N	122° 25.696' W
Drop Point	66	43° 18.022' N	122° 23.080' W
Drop Point	67	43° 17.475' N	122° 37.168' W
Drop Point	68	43° 14.696' N	122° 35.987' W
Drop Point	69	43° 14.951' N	122° 36.265' W
Drop Point	70	43° 13.440' N	122° 34.727' W
Drop Point	71	43° 11.017' N	122° 29.009' W
Drop Point	72	43° 11.359' N	122° 38.516' W
Drop Point	73	43° 13.354' N	122° 36.107' W
Drop Point	74	43° 15.667' N	122° 36.362' W
Drop Point	75	43° 14.820' N	122° 34.724' W
Drop Point	76	43° 16.895' N	122° 36.319' W
Drop Point	85	43° 13.376' N	122° 40.404' W
Drop Point	86	43° 13.493' N	122° 41.077' W
Drop Point	87	43° 14.366' N	122° 40.374' W
Drop Point	88	43° 12.854' N	122° 41.907' W
Drop Point	89	43° 13.366' N	122° 42.333' W
Drop Point	90	43° 14.745' N	122° 43.010' W
Drop Point	91	43° 16.787' N	122° 44.348' W
Drop Point	93	43° 17.204' N	122° 43.591' W
Drop Point	96	43° 18.314' N	122° 40.723' W



NW Team 10
7/24/2021 2025
Acres from IR
North American 1983 Datum, Lat/Long Grid

