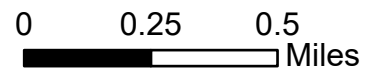


IAP Map

Jack Fire
OR-UPF-000265

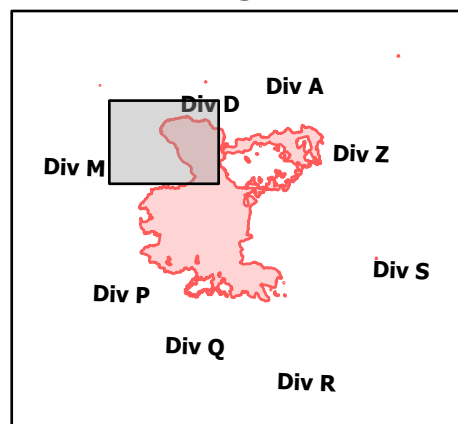
07/26/2021 - 24hr

21,520 acres at 07/24/2021 2047



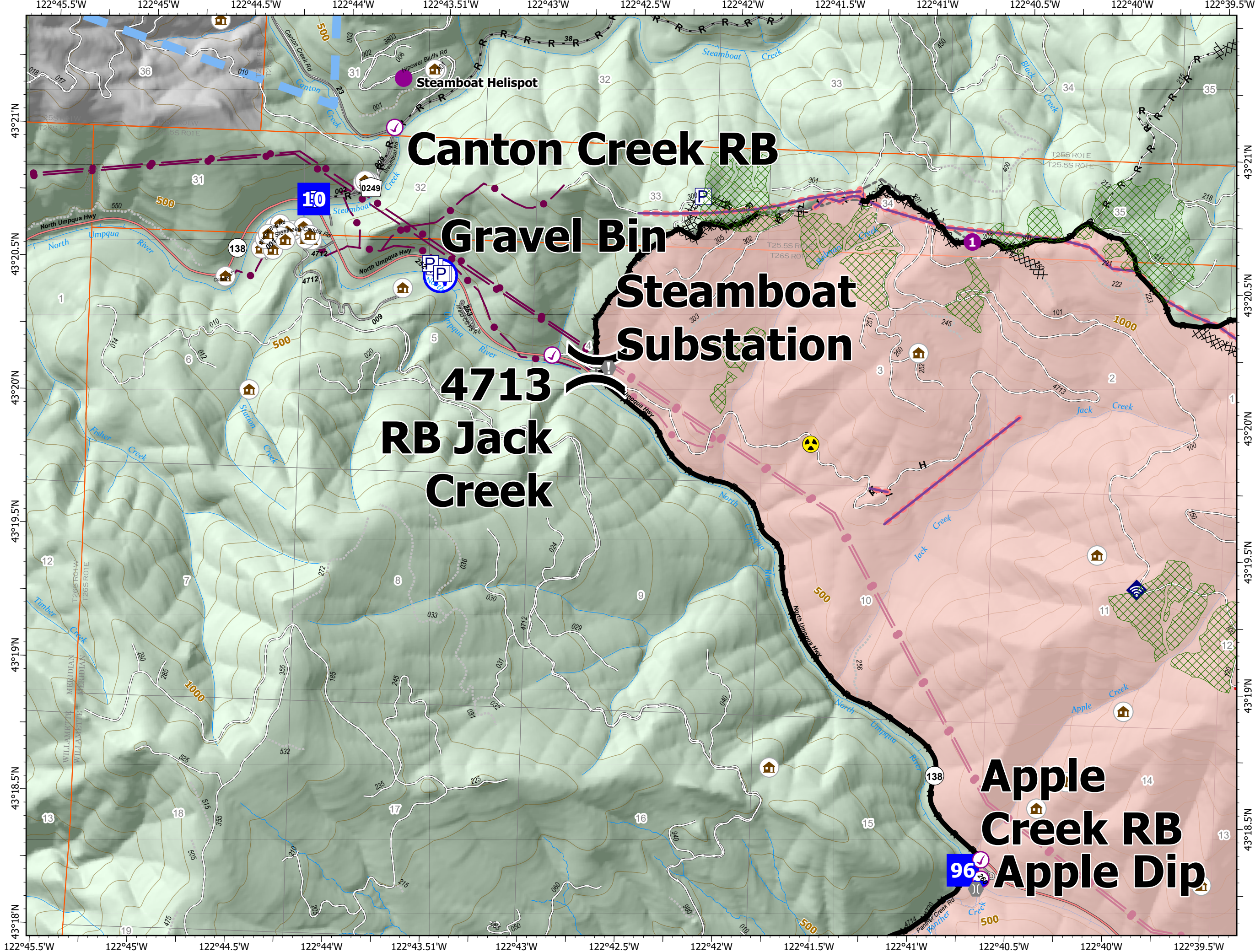
- Check Point
- Dip Site
- Helispot
- Division Break
- Drop Point
- Value at Risk
- Bridge
- Repair Point
- Landing or Log Deck
- Internet Access
- Hazard
- Water Source
- Completed Dozer Line
- Completed Hand Line
- Completed Road as Line
- Other
- Retardant Drop
- Temporary Flight Restriction
- Fire Edge
- Contained Line
- Other
- Prescribed Fire
- Wildfire Daily Fire Perimeter
- Utility Power Lines
- JackFireStructures_pt
- Timber Sale
- Wilderness
- ATP
- Area to Protect (ATP)

Page Number: 1



7/25/2021 2010

North American 1983 Datum. LatLong Grid

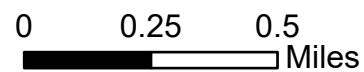


IAP Map

Jack Fire
OR-UPF-000265

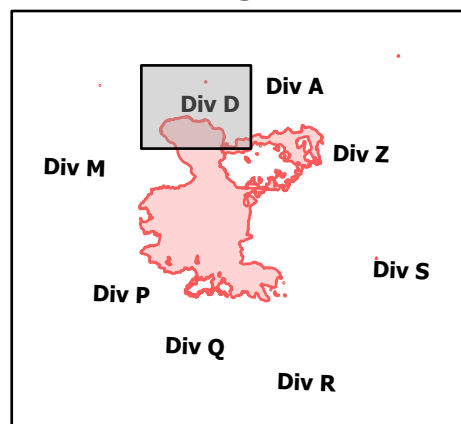
07/26/2021 - 24hr

21,520 acres at 07/24/2021 2047



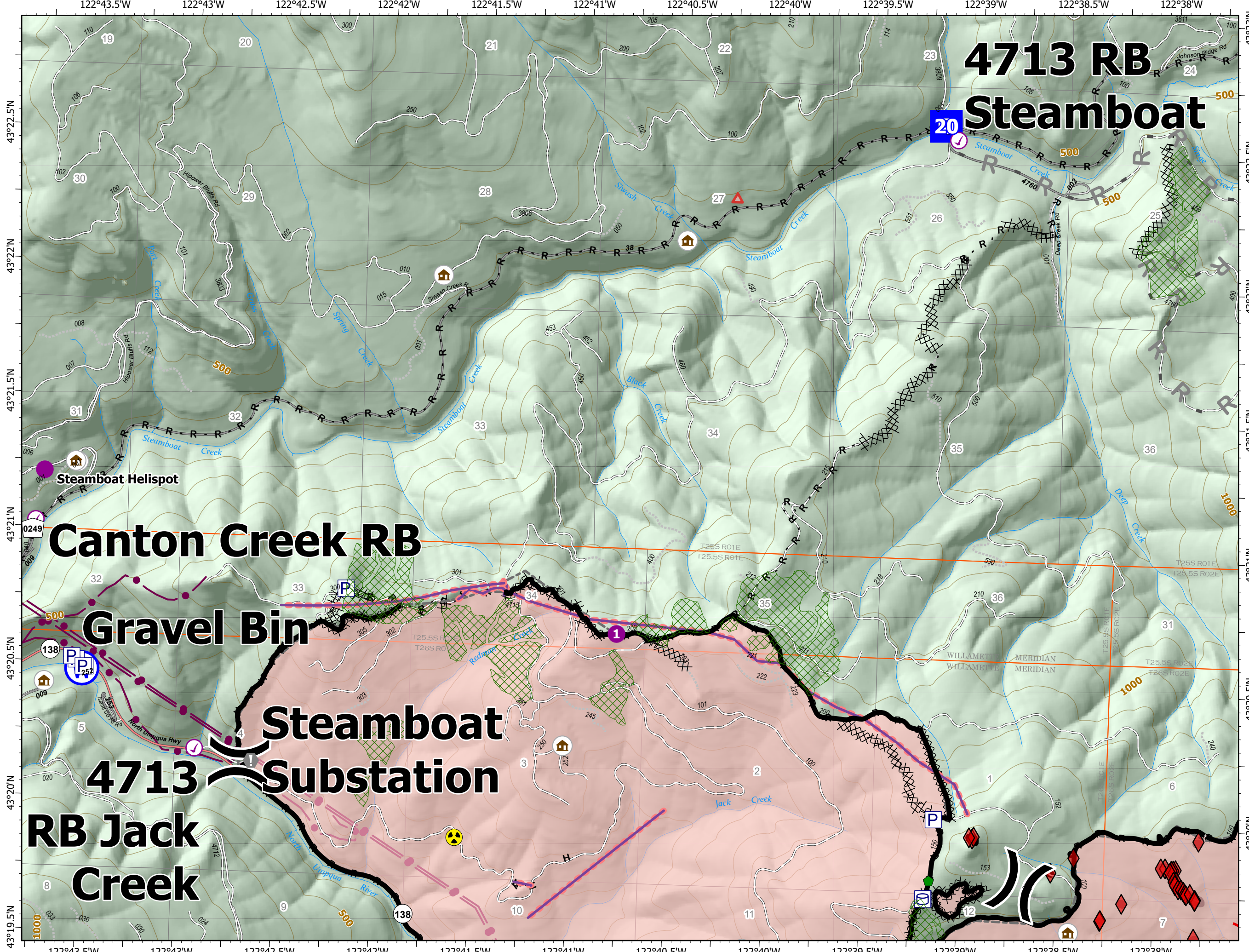
- Check Point
- Helispot
- Division Break
- Drop Point
- Value at Risk
- Repair Point
- Hazard
- Water Source
- Completed Dozer Line
- Completed Hand Line
- Completed Road as Line
- Planned Road as Line
- Other
- Retardant Drop
- Fire Edge
- Contained Line
- Other
- Prescribed Fire
- Wildfire Daily Fire Perimeter
- Utility Power Lines
- JackFireStructures_pt
- Timber Sale
- Wilderness
- ATP
- Area to Protect (ATP)

Page Number: 2



7/25/2021 2010

North American 1983 Datum. LatLong Grid



4713 RB Steamboat

Canton Creek RB

Gravel Bin

Steamboat Substation

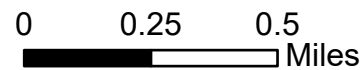
4713 RB Jack Creek

IAP Map

Jack Fire
OR-UPF-000265

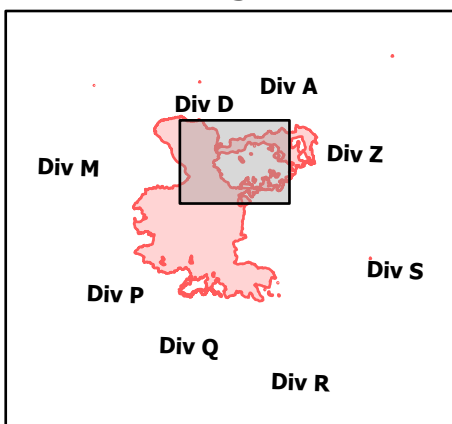
07/26/2021 - 24hr

21,520 acres at 07/24/2021 2047



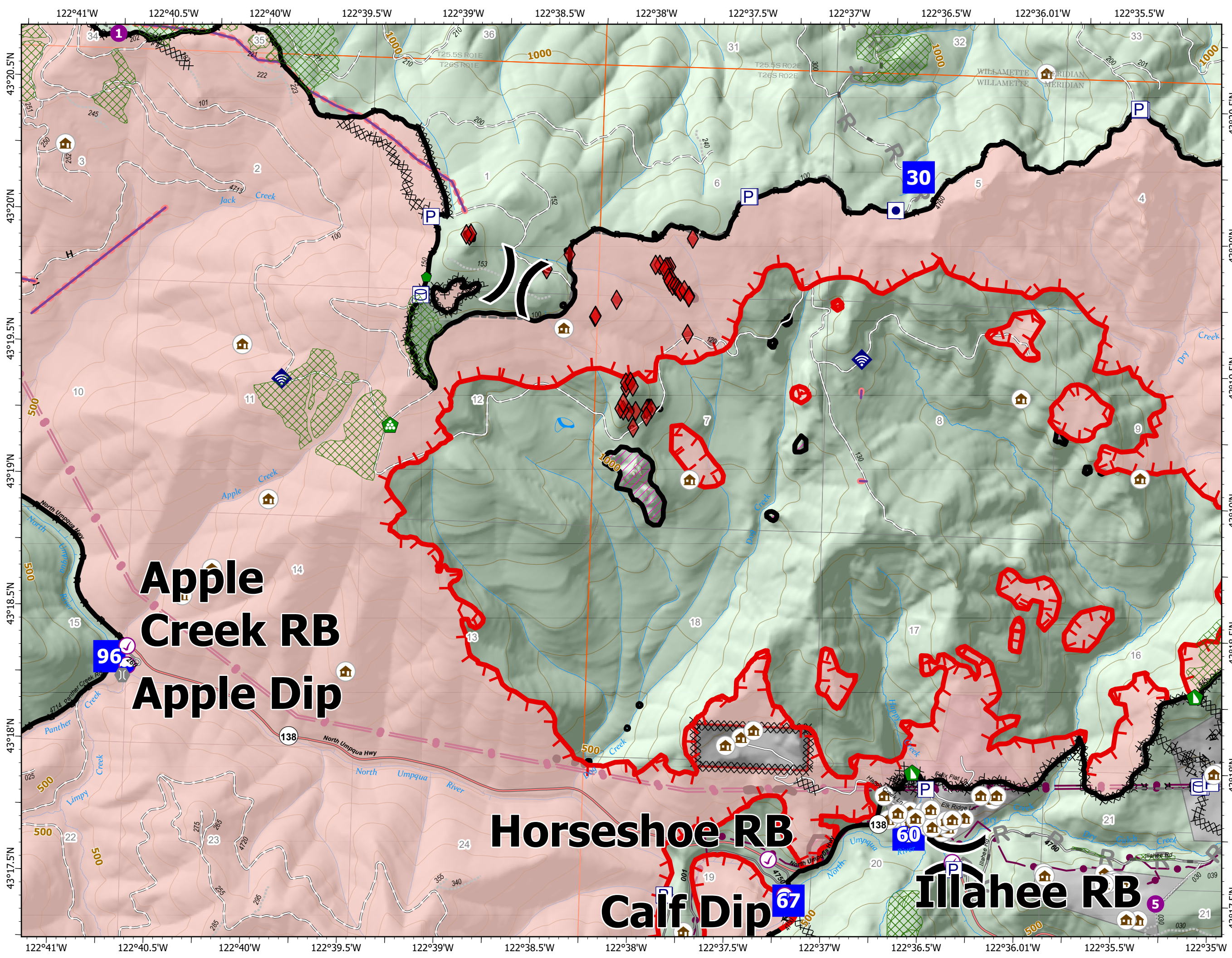
- Check Point
- Dip Site
- Helispot
- Division Break
- Drop Point
- ⚠ Value at Risk
- ⚙ Bridge
- 🌿 Water Development or Draft Site
- 🛠 Repair Point
- 🏠 Landing or Log Deck
- 🚧 Dozer Push
- 📶 Internet Access
- ⌘ Completed Dozer Line
- H Completed Hand Line
- R Completed Road as Line
- R Planned Road as Line
- Other
- 🚰 Retardant Drop
- 🔥 Fire Edge
- ▭ Contained Line
- ▭ Other
- 🔥 Prescribed Fire
- 🔥 Wildfire Daily Fire Perimeter
- ⚡ Utility Power Lines
- 🏠 JackFireStructures_pt
- 🌲 Timber Sale
- 🌿 Wilderness
- 🔹 ATP
- 🛡 Area to Protect (ATP)

Page Number: 3



7/25/2021 2010

North American 1983 Datum. LatLong Grid

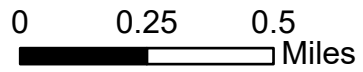


IAP Map

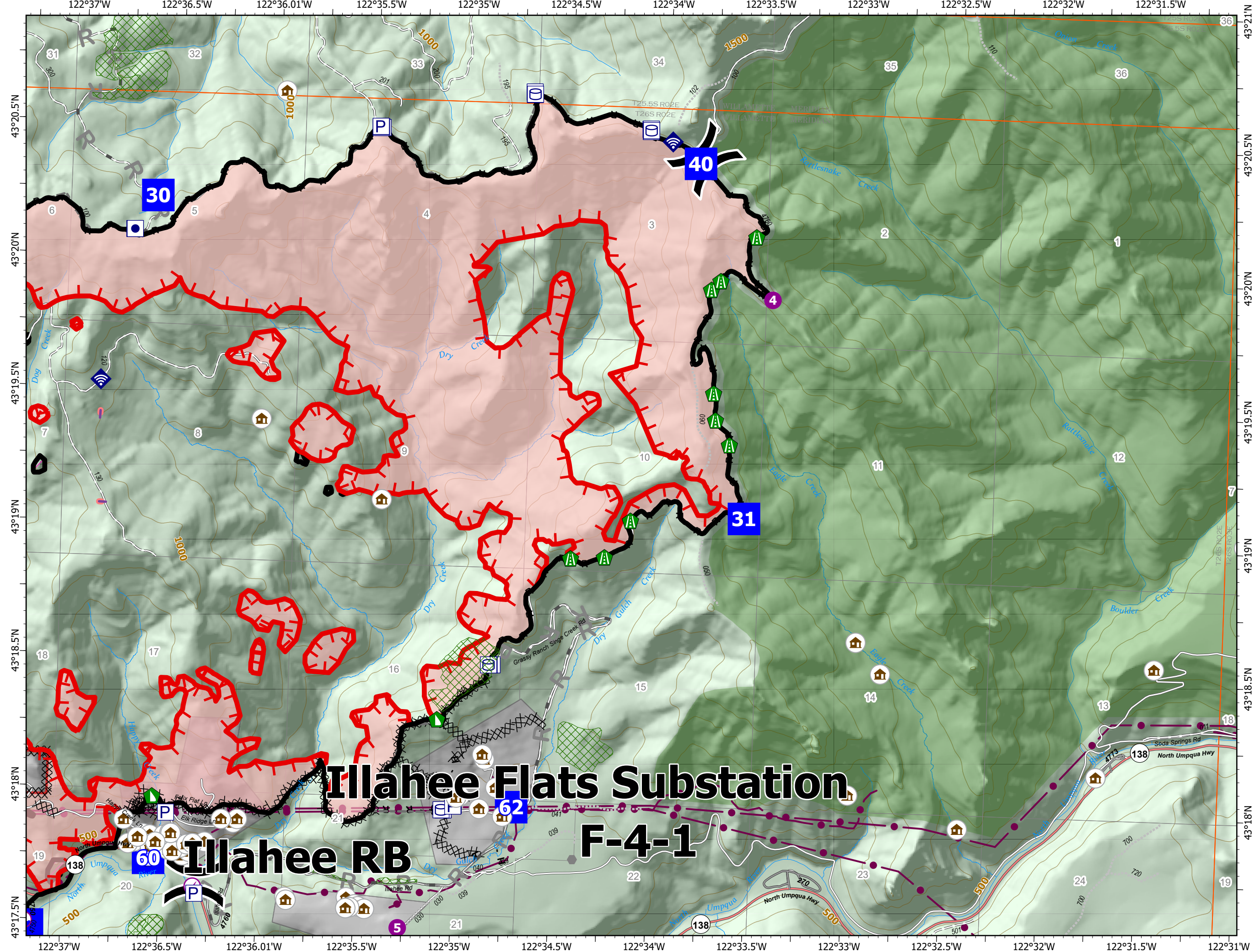
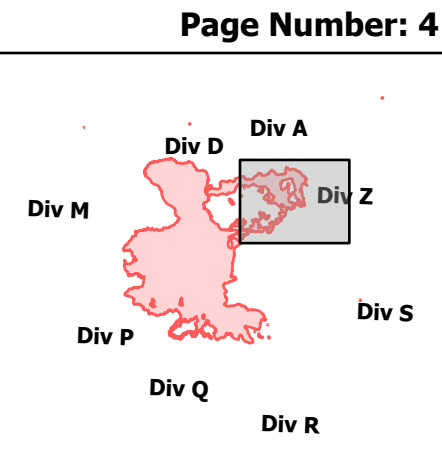
Jack Fire
OR-UPF-000265

07/26/2021 - 24hr

21,520 acres at 07/24/2021 2047



- Check Point
- Dip Site
- Helispot
-) (Division Break
- Drop Point
- ⚠ Value at Risk
- Other
- ▲ Road Repair
- ▲ Dozer Push
- 📶 Internet Access
- ⌘ Completed Dozer Line
- H Completed Hand Line
- R Completed Road as Line
- R Planned Road as Line
- Other
- ▬ Retardant Drop
- ▬ Fire Edge
- ▬ Contained Line
- ▬ Other
- ▬ Prescribed Fire
- ▬ Wildfire Daily Fire Perimeter
- Utility Power Lines
- 🏠 JackFireStructures_pt
- 🌲 Timber Sale
- 🌲 Wilderness
- ⬠ ATP
- ▬ Area to Protect (ATP)

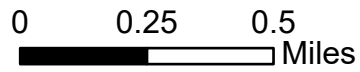


IAP Map

Jack Fire
OR-UPF-000265

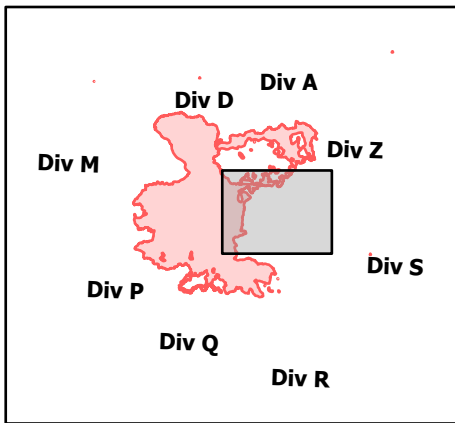
07/26/2021 - 24hr

21,520 acres at 07/24/2021 2047



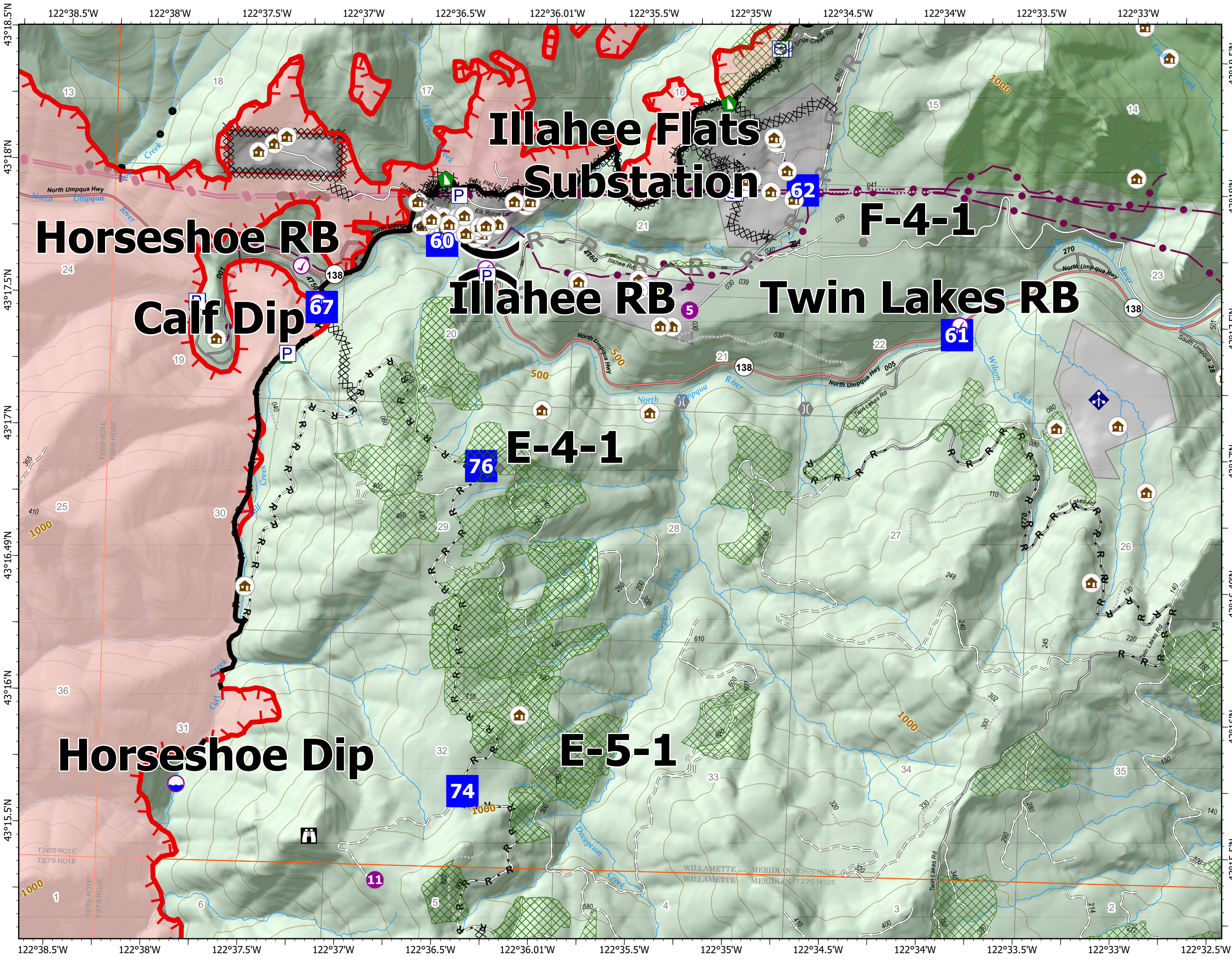
- Check Point
- Dip Site
- Helispot
- ⌋ Division Break
- Drop Point
- 🏠 Lookout
- ⚠ Value at Risk
- Other
- 🌉 Bridge
- 🏠 Water Development or Draft Site
- 🚧 Dozer Push
- 📡 Mobile Weather Unit
- ⌘ Completed Dozer Line
- ⌘ Completed Hand Line
- ⌘ Completed Road as Line
- ⌘ Planned Road as Line
- ⌘ Other
- 🔴 Fire Edge
- ⬛ Contained Line
- ⬜ Other
- 🟡 Prescribed Fire
- 🔴 Wildfire Daily Fire Perimeter
- 🟡 Utility Power Lines
- 🏠 JackFireStructures_pt
- 🌲 Timber Sale
- 🌲 Wilderness
- 🔴 ATP
- ⬛ Area to Protect (ATP)

Page Number: 5



7/25/2021 2011

North American 1983 Datum. LatLong Grid

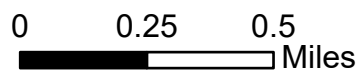


IAP Map

Jack Fire
OR-UPF-000265

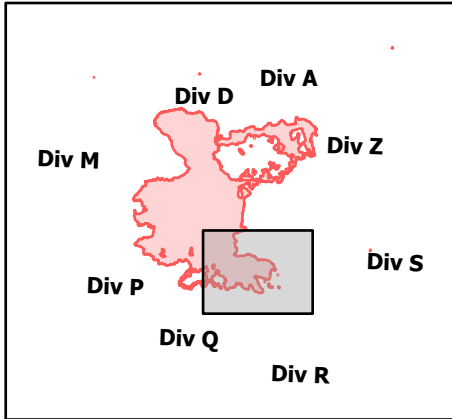
07/26/2021 - 24hr

21,520 acres at 07/24/2021 2047



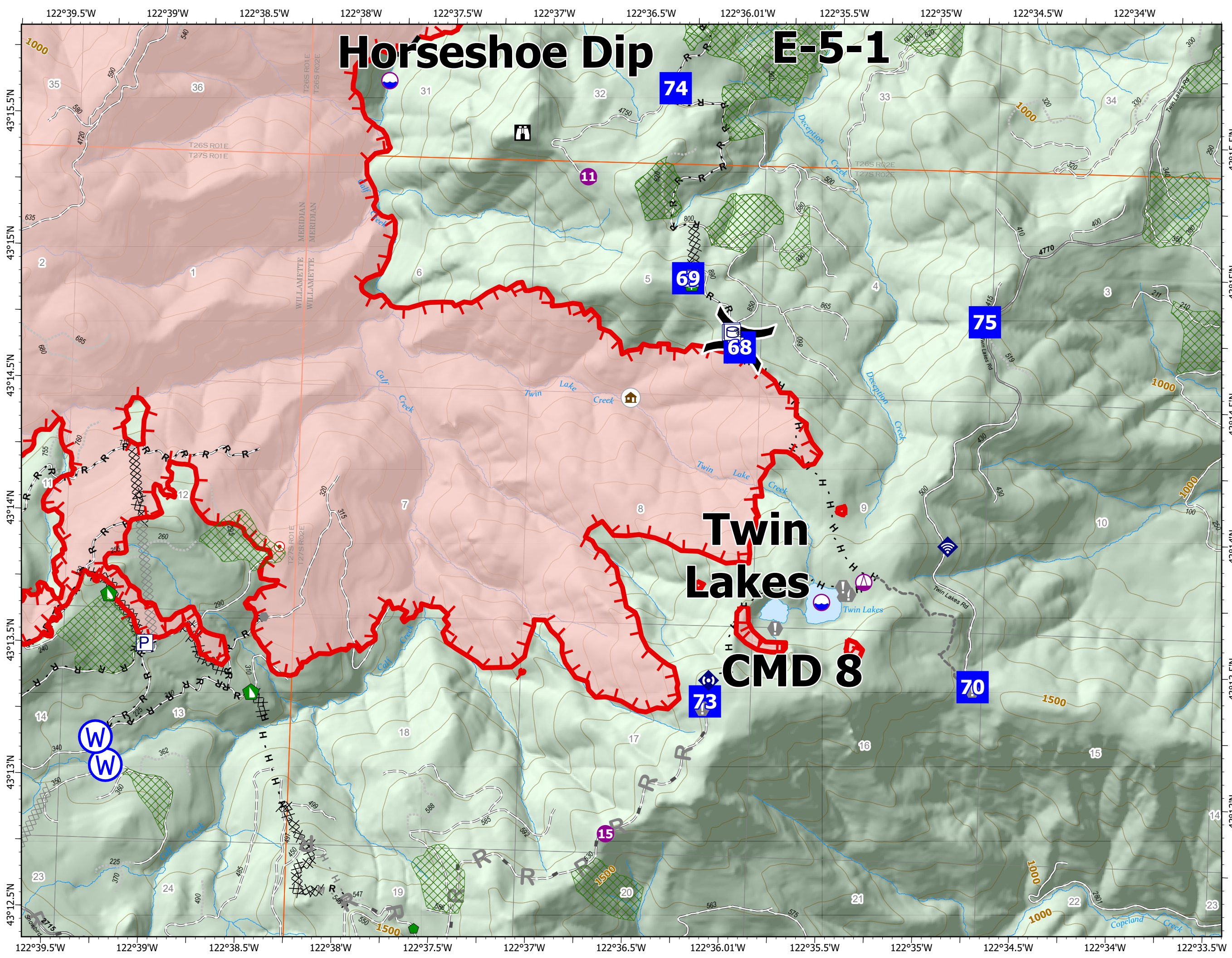
- Dip Site
- Helispot
- Sling Site
- Division Break
- Drop Point
- Lookout
- Hot Spot - Spot Fire
- Value at Risk
- Other
- Repair Point
- Hazard Tree
- Dozer Push
- Internet Access
- Repeater
- Water Source
- Completed Dozer Line
- Completed Hand Line
- Completed Road as Line
- Planned Dozer Line
- Planned Hand Line
- Planned Mixed Construction Line
- Planned Road as Line
- Other
- Fire Edge
- Contained Line
- Other
- Prescribed Fire
- Wildfire Daily Fire Perimeter
- Utility Power Lines
- JackFireStructures_pt
- Timber Sale
- Wilderness
- ATP
- Area to Protect (ATP)

Page Number: 6



7/25/2021 2011

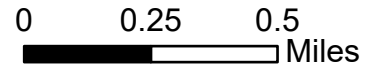
North American 1983 Datum. LatLong Grid



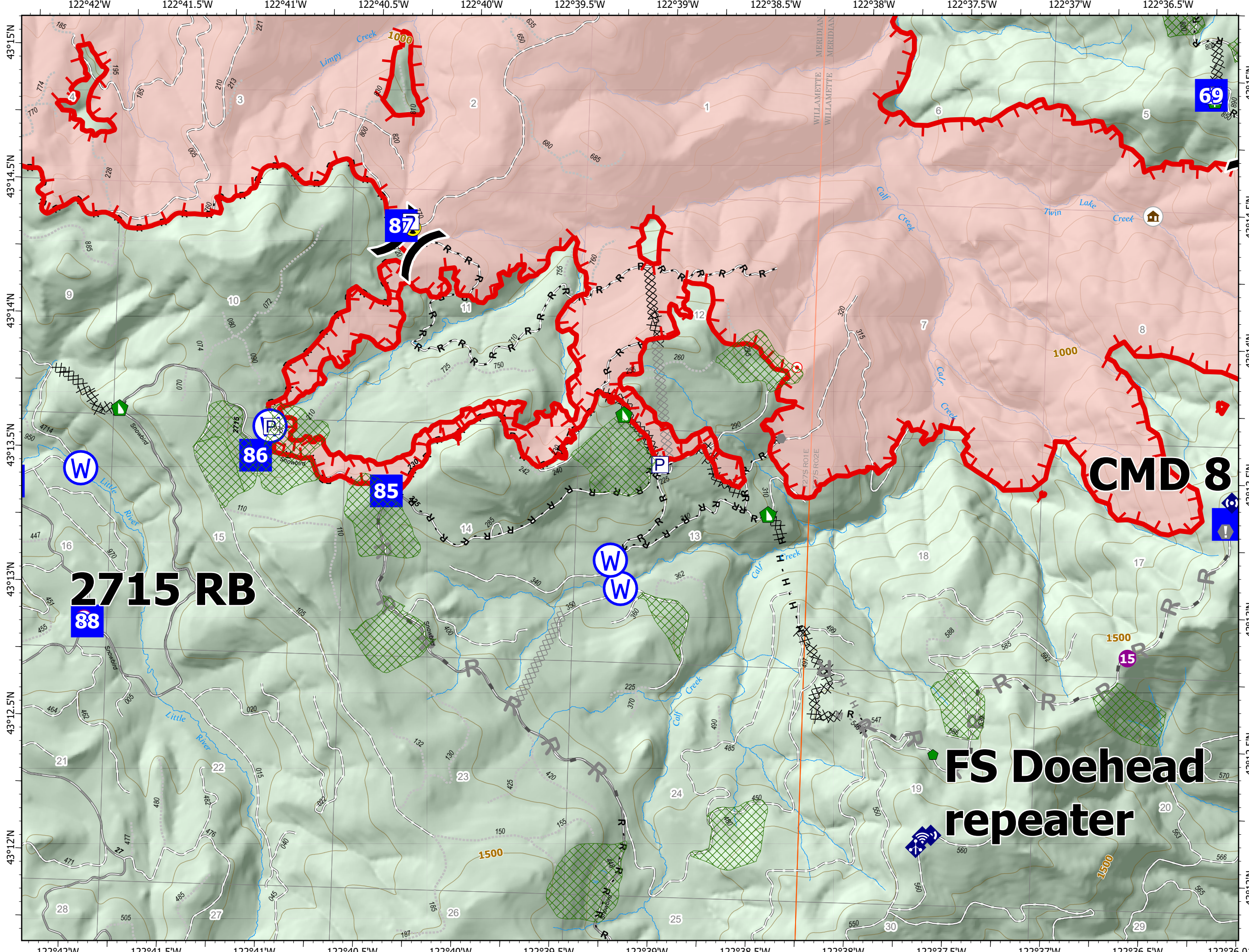
IAP Map

Jack Fire
OR-UPF-000265
07/26/2021 - 24hr

21,520 acres at 07/24/2021 2047



- Check Point
- Helispot
- ⊕ Sling Site
-) (Division Break
- Drop Point
- ⊠ Camp
- ⊙ Hot Spot - Spot Fire
- ⊙ Value at Risk
- Other
- ⊕ Repair Point
- ⊕ Hazard Tree
- ⊕ Dozer Push
- ⊕ Mobile Weather Unit
- ⊕ Internet Access
- ⊕ Repeater
- ⊕ Hazard
- ⊕ Water Source
- ⊕ Completed Dozer Line
- H Completed Hand Line
- R Completed Road as Line
- ⊕ Planned Dozer Line
- H Planned Hand Line
- M Planned Mixed Construction Line
- R Planned Road as Line
- ⊕ Retardant Drop
- ⊕ Fire Edge
- ⊕ Other
- ⊕ Prescribed Fire
- ⊕ Wildfire Daily Fire Perimeter
- ⊕ Utility Power Lines
- ⊕ JackFireStructures_pt
- ⊕ Timber Sale
- ⊕ Wilderness
- ⊕ ATP
- ⊕ Area to Protect (ATP)



CMD 8

2715 RB

FS Doehead repeater

86

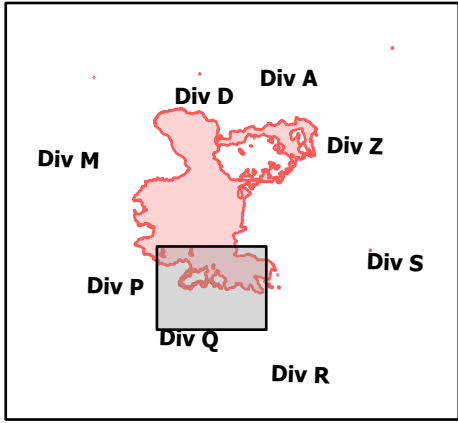
85

87

88

69

Page Number: 7



7/25/2021 2011

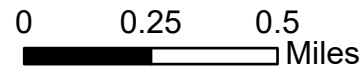
North American 1983 Datum. LatLong Grid

IAP Map

Jack Fire
OR-UPF-000265

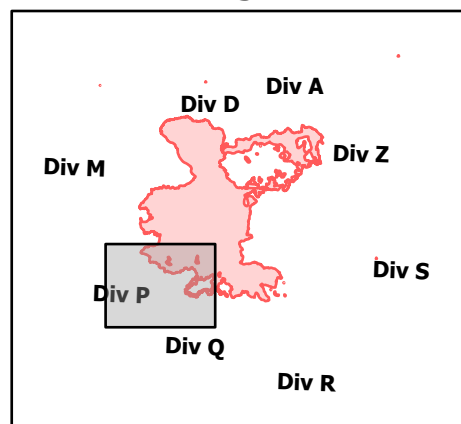
07/26/2021 - 24hr

21,520 acres at 07/24/2021 2047



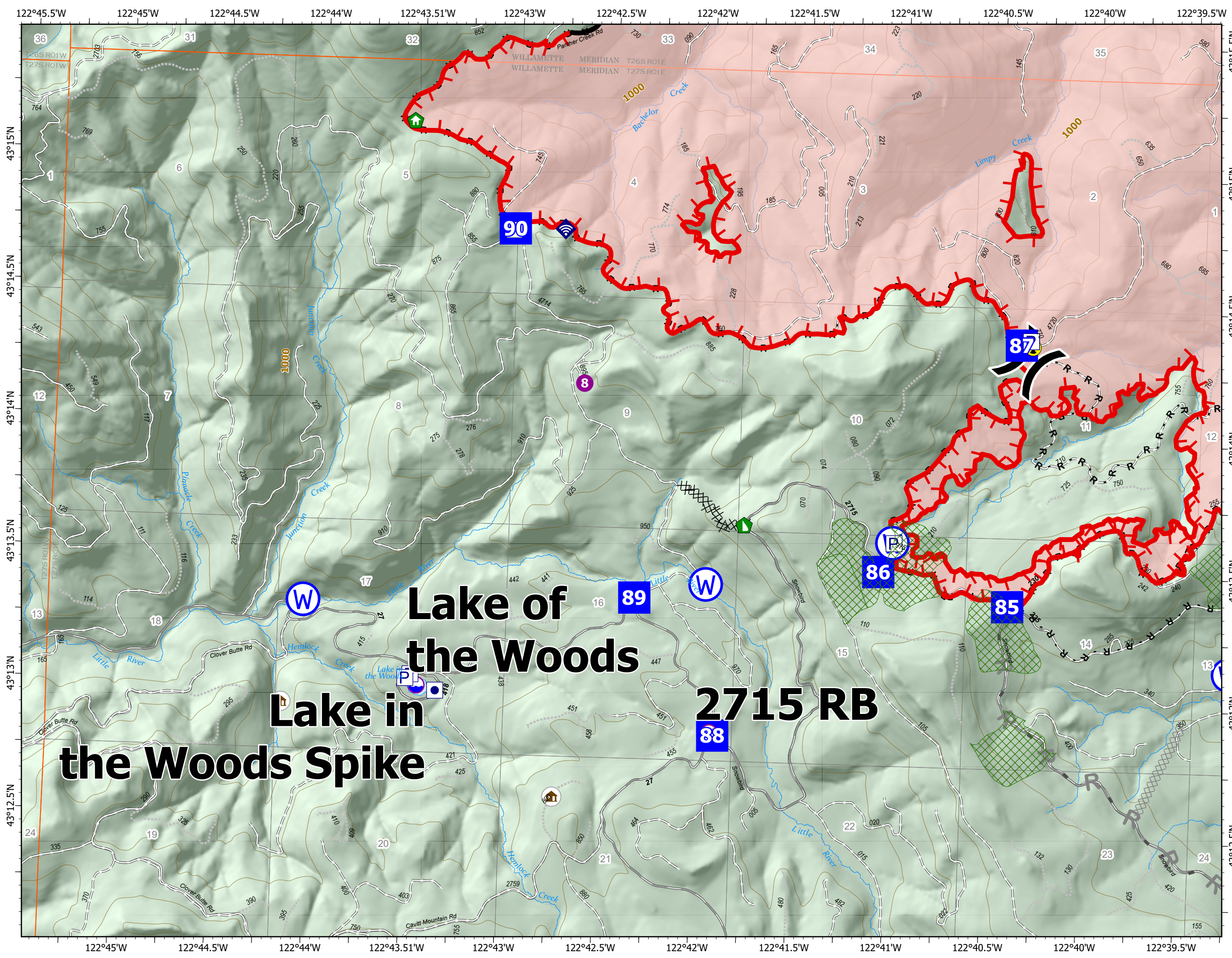
- Check Point
- Dip Site
- Helispot
-) (Division Break
- Drop Point
- ▲ Camp
- 🏠 Structure Wrap
- 🏠 Dozer Push
- 📶 Internet Access
- ⚠ Hazard
- 🌊 Water Source
- ⌘ Completed Dozer Line
- H - Completed Hand Line
- R - Completed Road as Line
- ⌘ Planned Dozer Line
- R Planned Road as Line
- 🚰 Retardant Drop
- 🔴 Fire Edge
- 🔴 Contained Line
- 🔴 Other
- 🔴 Prescribed Fire
- 🔴 Wildfire Daily Fire Perimeter
- ⚡ Utility Power Lines
- 🏠 JackFireStructures_pt
- 🌲 Timber Sale
- 🌲 Wilderness
- 📍 ATP
- 🛡 Area to Protect (ATP)

Page Number: 8



7/25/2021 2011

North American 1983 Datum. LatLong Grid

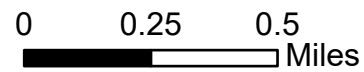


IAP Map

Jack Fire
OR-UPF-000265

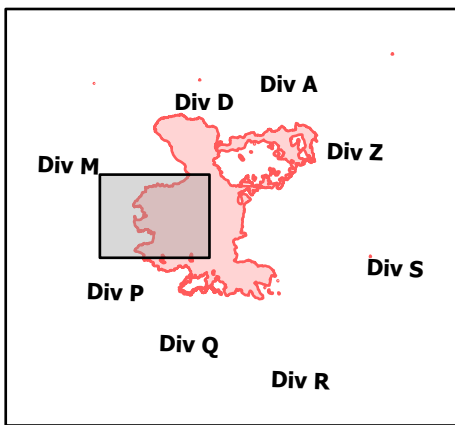
07/26/2021 - 24hr

21,520 acres at 07/24/2021 2047



- Check Point
- Dip Site
- Helispot
- Division Break
- Drop Point
- Bridge
- Structure Wrap
- Repair Point
- Dozer Push
- Internet Access
- Water Source
- Completed Dozer Line
- Completed Hand Line
- Completed Road as Line
- Planned Road as Line
- Retardant Drop
- Fire Edge
- Contained Line
- Other
- Prescribed Fire
- Wildfire Daily Fire Perimeter
- Utility Power Lines
- JackFireStructures_pt
- Timber Sale
- Wilderness
- ATP
- Area to Protect (ATP)

Page Number: 9



7/25/2021 2011

North American 1983 Datum. LatLong Grid

