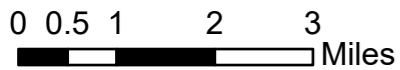


IAP Map

Jack Fire
OR-UPF-000265

21,881 acres at 07/26/2021 @ 1056

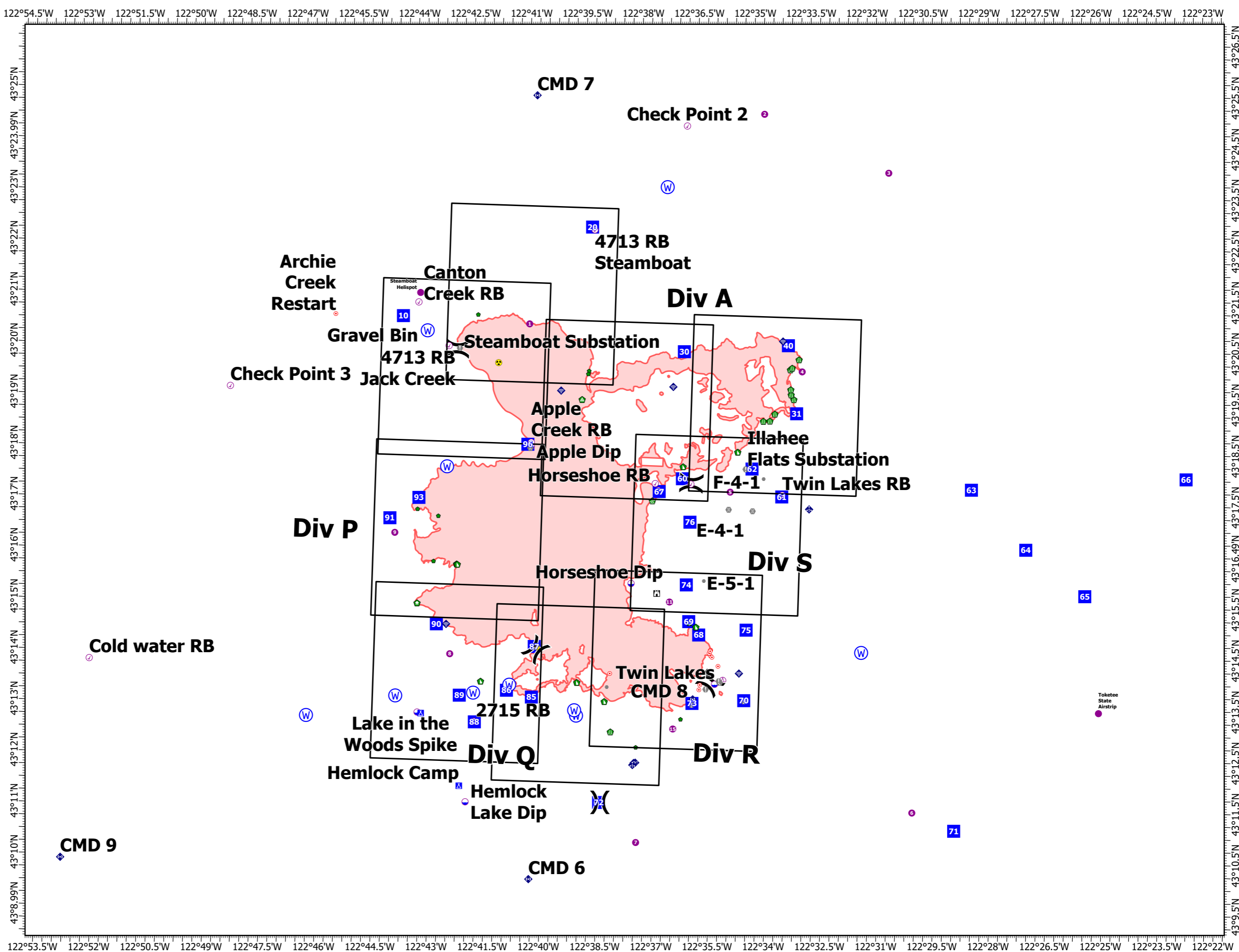


Temperature: 82°
Relative Humidity: 40%
Wind Direction: NW
Wind Speed: 4-6 mph Gust 15



7/26/2021 2101

North American 1983 Datum. LatLong Grid

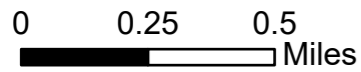


IAP Map

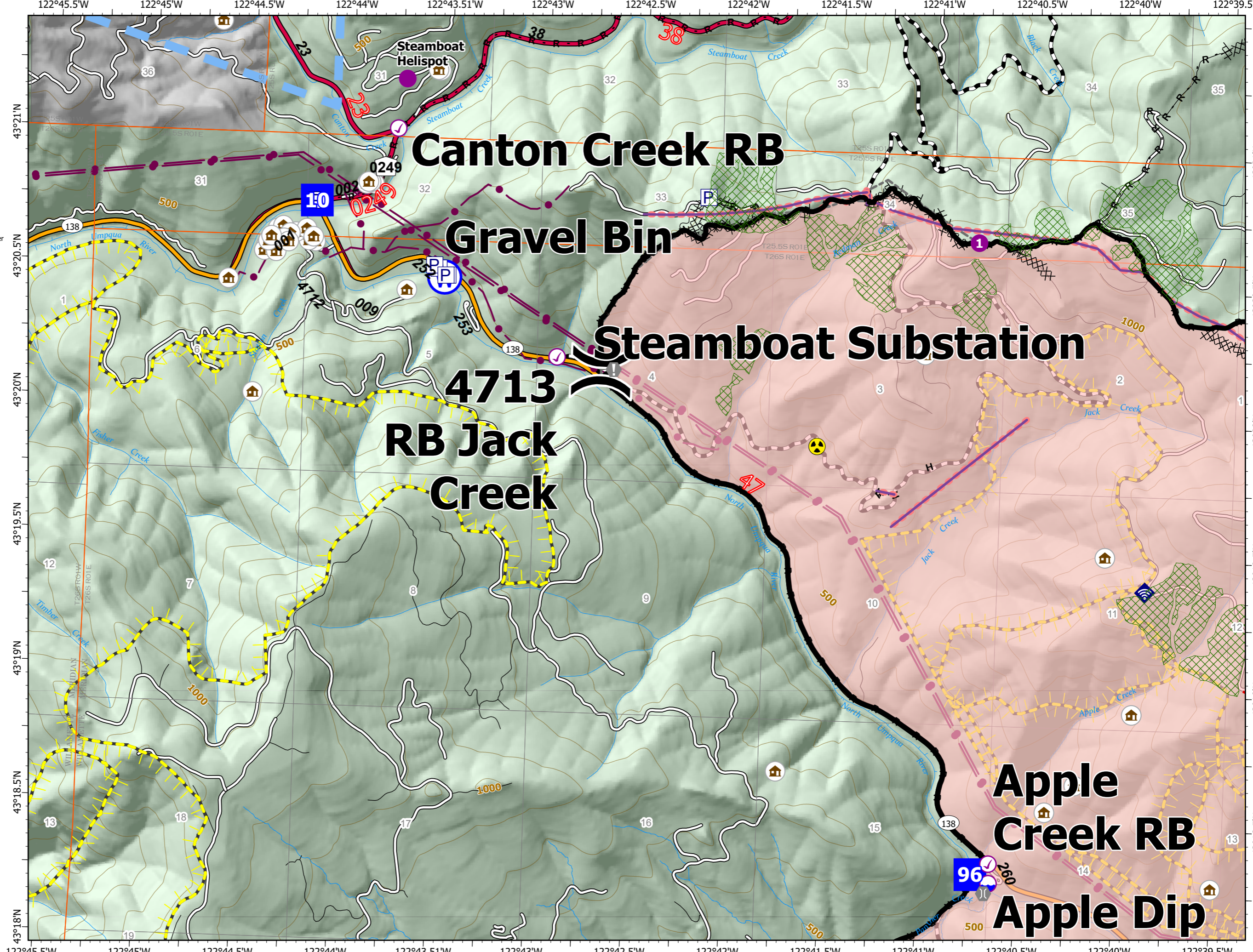
Jack Fire
OR-UPF-000265

07/27/2021 - 24hr

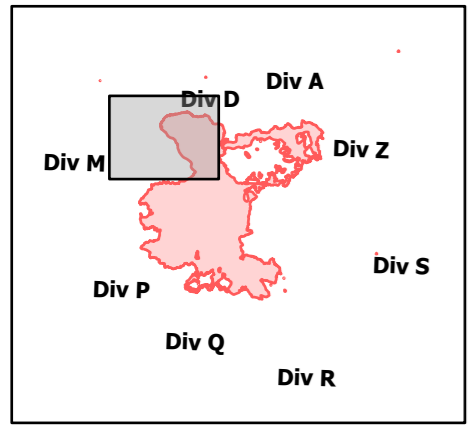
21,881 acres at 07/26/2021 @ 1056



- Check Point
- Dip Site
- Helispot
- ⌋ Division Break
- Drop Point
- ⊕ Value at Risk
- ⌒ Bridge
- ⬆ Repair Point
- ⬆ Landing or Log Deck
- ⬆ Internet Access
- ⚠ Hazard
- ⊕ Water Source
- ⌘ Completed Dozer Line
- H Completed Hand Line
- R Completed Road as Line
- Other
- ⬆ Retardant Drop
- ⬆ Temporary Flight Restriction
- ▬ Fire Edge
- ▬ Contained Line
- ▬ Other
- ▬ Prescribed Fire
- ▬ Wildfire Daily Fire Perimeter
- Utility Power Lines
- 🏠 JackFireStructures_pt
- ▨ Timber Sale
- ▨ Wilderness
- ⬆ ATP
- ▬ Area to Protect (ATP)
- ▬ Hwy
- ▬ FS Mainlines
- ▬ Access Roads
- ▬ Local Roads
- ▬ Forest Roads
- ▬ Roadless Areas



Page Number: 1



7/26/2021 2059

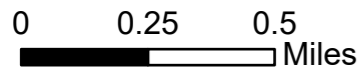
North American 1983 Datum. LatLong Grid

IAP Map

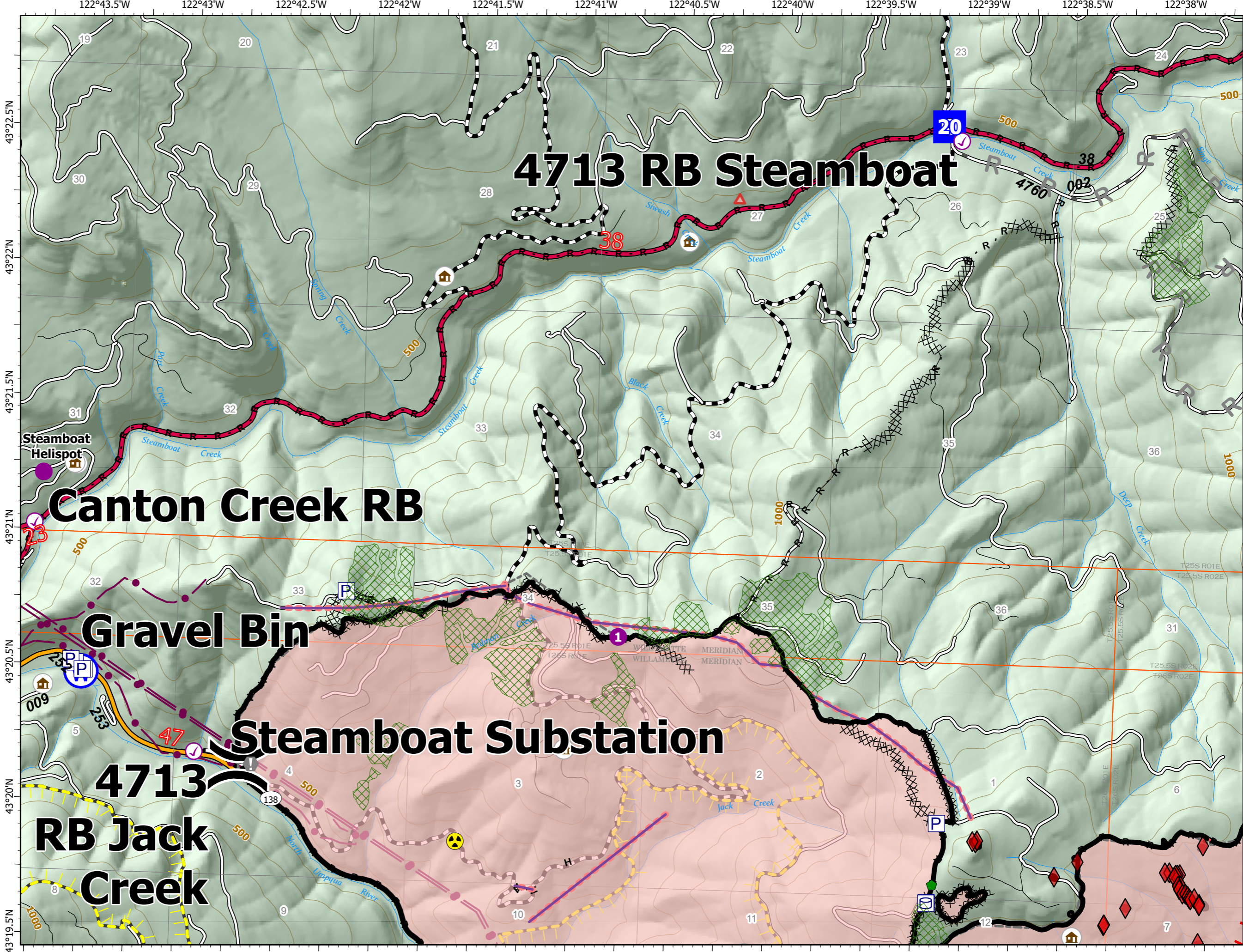
Jack Fire
OR-UPF-000265

07/27/2021 - 24hr

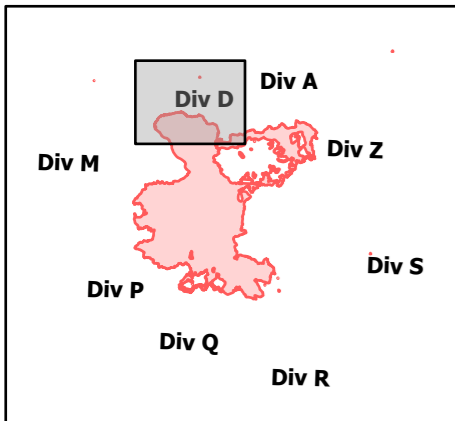
21,881 acres at 07/26/2021 @ 1056



- Check Point
- Helispot
- ⌘ Division Break
- Drop Point
- ⚠ Value at Risk
- 🏠 Repair Point
- ☠ Hazard
- 🌊 Water Source
- ⌘ Completed Dozer Line
- H Completed Hand Line
- R Completed Road as Line
- R Planned Road as Line
- - - Other
- Retardant Drop
- ▬ Fire Edge
- ▬ Contained Line
- ▬ Other
- ▬ Prescribed Fire
- ▬ Wildfire Daily Fire Perimeter
- ⚡ Utility Power Lines
- 🏠 JackFireStructures_pt
- ▨ Timber Sale
- ▨ Wilderness
- ⬠ ATP
- ▬ Area to Protect (ATP)
- ▬ Hwy
- ▬ FS Mainlines
- ▬ Access Roads
- ▬ Local Roads
- ▬ Forest Roads
- ▬ Roadless Areas



Page Number: 2



7/26/2021 2100

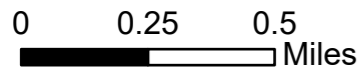
North American 1983 Datum. LatLong Grid

IAP Map

Jack Fire
OR-UPF-000265

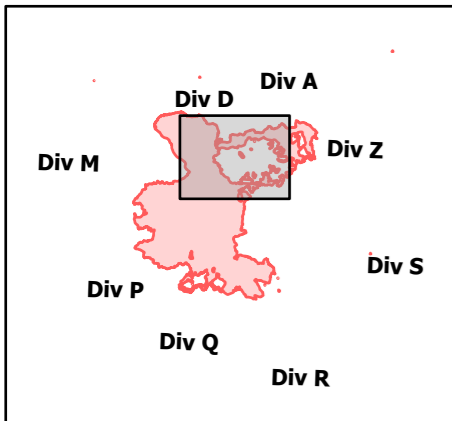
07/27/2021 - 24hr

21,881 acres at 07/26/2021 @ 1056



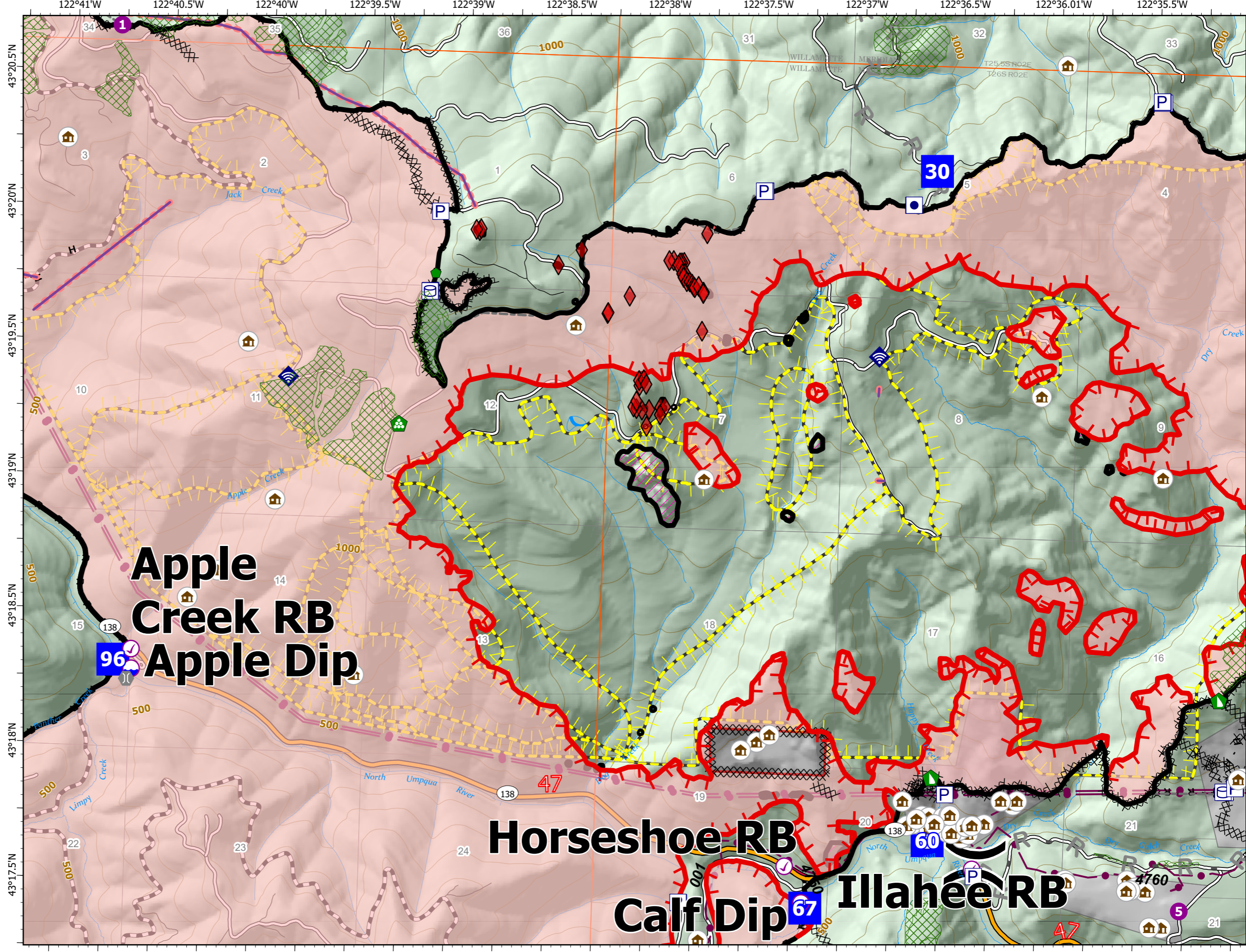
- Check Point
- Dip Site
- Helispot
-) (Division Break
- Drop Point
- Value at Risk
- ⌘ Bridge
- ⊠ Water Development or Draft Site
- ⊠ Repair Point
- ⊠ Landing or Log Deck
- ⊠ Dozer Push
- ⊠ Internet Access
- ⊠ Completed Dozer Line
- H Completed Hand Line
- R Completed Road as Line
- R Planned Road as Line
- Other
- Retardant Drop
- Fire Edge
- Contained Line
- Other
- Prescribed Fire
- Wildfire Daily Fire Perimeter
- Utility Power Lines
- 🏠 JackFireStructures_pt
- ⊠ Timber Sale
- ⊠ Wilderness
- ◆ ATP
- Area to Protect (ATP)
- Hwy
- FS Mainlines
- Access Roads
- Local Roads
- Forest Roads
- Roadless Areas

Page Number: 3



7/26/2021 2100

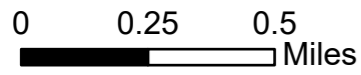
North American 1983 Datum. LatLong Grid



IAP Map

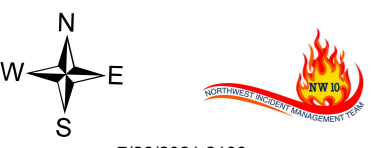
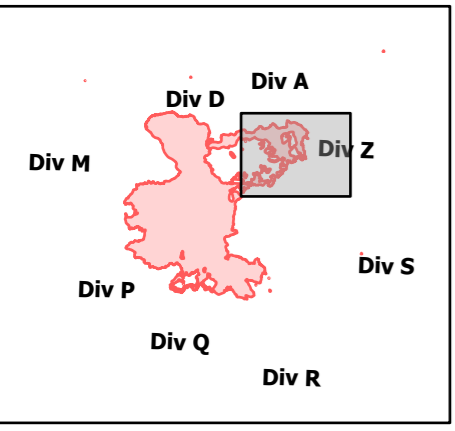
Jack Fire
OR-UPF-000265
07/27/2021 - 24hr

21,881 acres at 07/26/2021 @ 1056



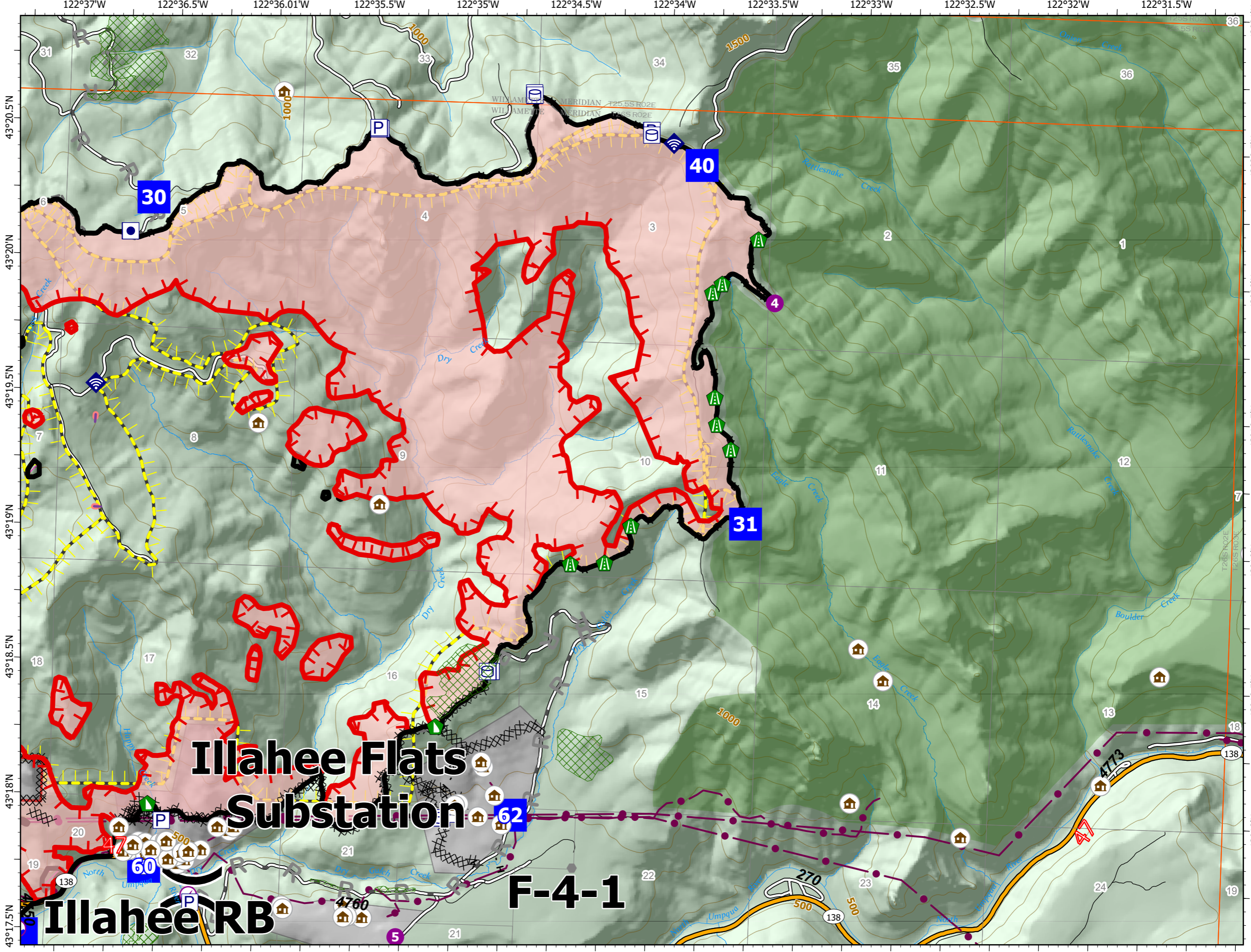
- Check Point
- Dip Site
- Helispot
- ⌋ Division Break
- Drop Point
- ⊙ Value at Risk
- Other
- ▲ Road Repair
- ▲ Dozer Push
- ◆ Internet Access
- ⌘ Completed Dozer Line
- H Completed Hand Line
- R Completed Road as Line
- R Planned Road as Line
- Other
- Retardant Drop
- Fire Edge
- Contained Line
- Other
- Prescribed Fire
- Wildfire Daily Fire Perimeter
- Utility Power Lines
- 🏠 JackFireStructures_pt
- 🌲 Timber Sale
- 🌲 Wilderness
- ⬠ ATP
- ⬠ Area to Protect (ATP)
- Hwy
- FS Mainlines
- Access Roads
- Local Roads
- Forest Roads
- Roadless Areas

Page Number: 4



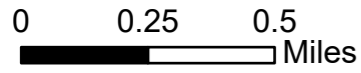
7/26/2021 2100

North American 1983 Datum. LatLong Grid

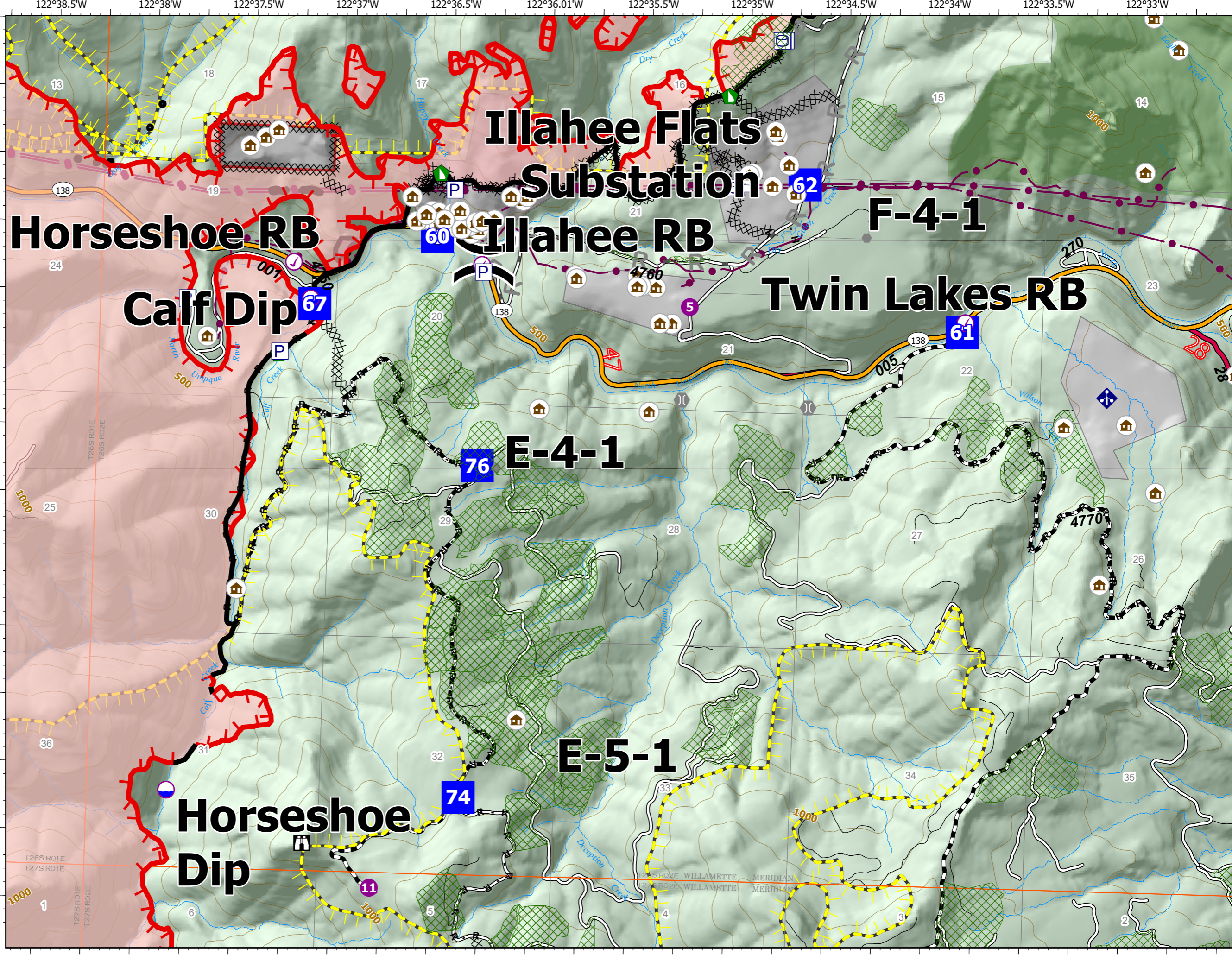


IAP Map

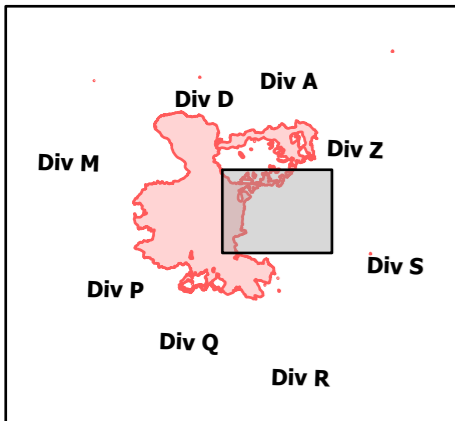
Jack Fire
OR-UPF-000265
07/27/2021 - 24hr
21,881 acres at 07/26/2021 @ 1056



- Check Point
- Dip Site
- Helispot
-) (Division Break
- Drop Point
- ⚠ Lookout
- Value at Risk
- Other
- ⚙ Bridge
- 🌿 Water Development or Draft Site
- 🚧 Dozer Push
- 📡 Mobile Weather Unit
- ⊗ Completed Dozer Line
- H Completed Hand Line
- R Completed Road as Line
- R Planned Road as Line
- Other
- 🔥 Fire Edge
- ▬ Contained Line
- ▬ Other
- 🔥 Prescribed Fire
- 🔥 Wildfire Daily Fire Perimeter
- ⚡ Utility Power Lines
- 🏠 JackFireStructures_pt
- 🌲 Timber Sale
- 🌲 Wilderness
- 📍 ATP
- 🛡 Area to Protect (ATP)
- 🛣 Hwy
- 🛣 FS Mainlines
- 🛣 Access Roads
- 🛣 Local Roads
- 🛣 Forest Roads
- 🛣 Roadless Areas



Page Number: 5

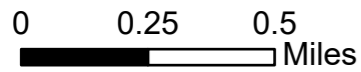


IAP Map

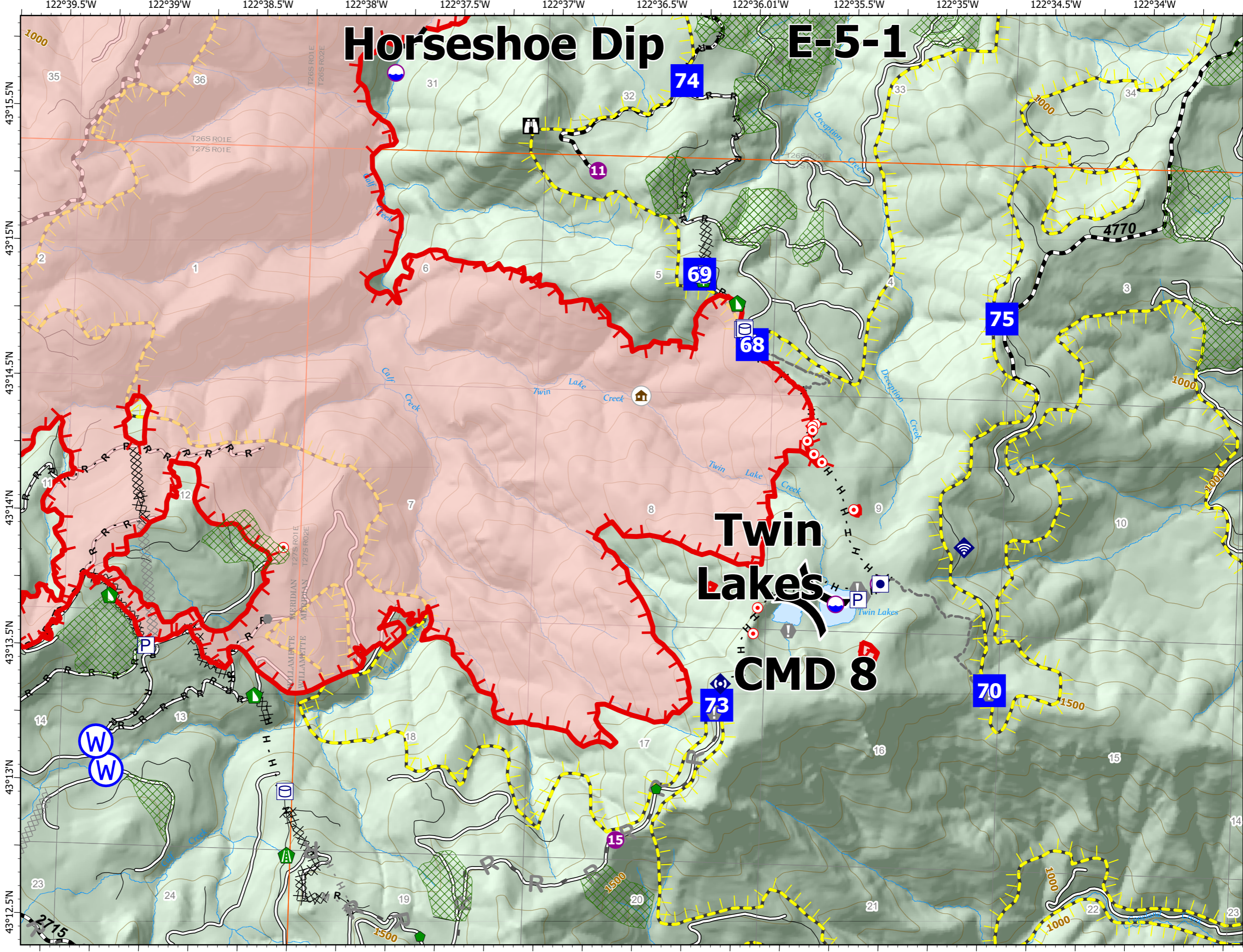
Jack Fire
OR-UPF-000265

07/27/2021 - 24hr

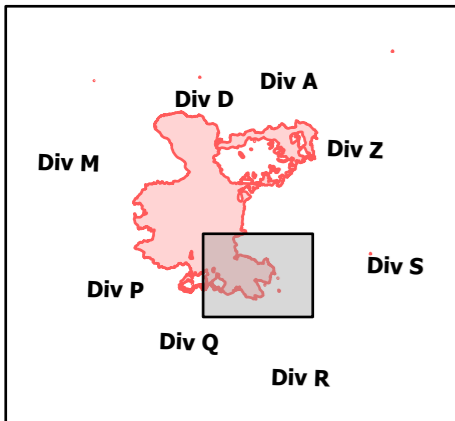
21,881 acres at 07/26/2021 @ 1056



- Dip Site
- Helispot
- Sling Site
- Division Break
- Drop Point
- Lookout
- Hot Spot - Spot Fire
- Value at Risk
- Other
- Road Repair
- Repair Point
- Hazard Tree
- Dozer Push
- Internet Access
- Repeater
- Water Source
- Completed Dozer Line
- Completed Hand Line
- Completed Road as Line
- Planned Dozer Line
- Planned Hand Line
- M Planned Mixed Construction Line
- R Planned Road as Line
- Other
- Fire Edge
- Contained Line
- Other
- Prescribed Fire
- Wildfire Daily Fire Perimeter
- Utility Power Lines
- JackFireStructures_pt
- Timber Sale
- Wilderness
- ATP
- Area to Protect (ATP)
- Hwy
- FS Mainlines
- Access Roads
- Local Roads
- Forest Roads
- Roadless Areas



Page Number: 6



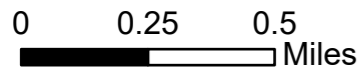
7/26/2021 2100

North American 1983 Datum. LatLong Grid

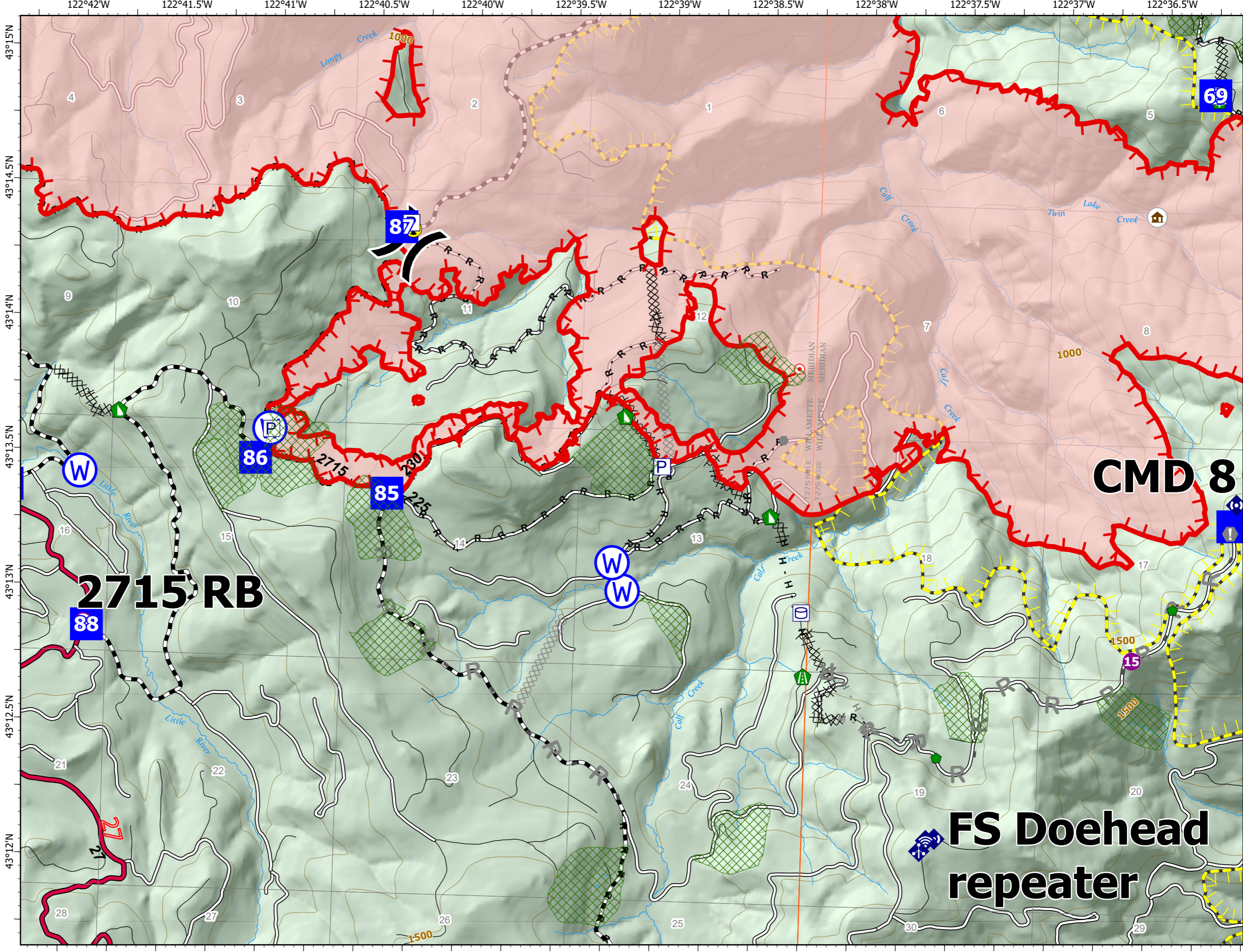
IAP Map

Jack Fire
OR-UPF-000265
07/27/2021 - 24hr

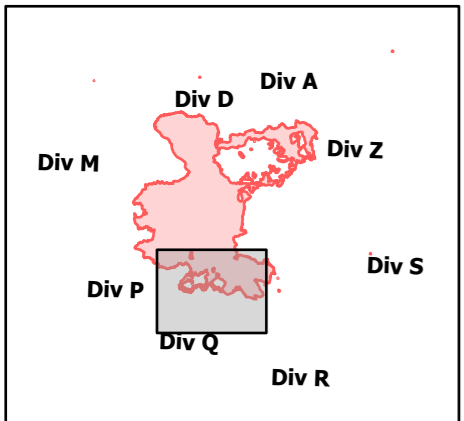
21,881 acres at 07/26/2021 @ 1056



- | | |
|--------------------------|-----------------------------------|
| ○ Check Point | ⊗ Planned Dozer Line |
| ● Helispot | H Planned Hand Line |
| ⊗ Sling Site | M Planned Mixed Construction Line |
| ⊗ Division Break | R Planned Road as Line |
| ⊗ Drop Point | Retardant Drop |
| ⊗ Camp | Fire Edge |
| ● Hot Spot - Spot Fire | Other |
| ● Value at Risk | Prescribed Fire |
| ● Other | Wildfire Daily Fire Perimeter |
| ● Road Repair | Utility Power Lines |
| ● Repair Point | JackFireStructures_pt |
| ● Hazard Tree | Timber Sale |
| ● Dozer Push | Wilderness |
| ● Mobile Weather Unit | ATP |
| ● Internet Access | Area to Protect (ATP) |
| ● Repeater | Hwy |
| ● Hazard | FS Mainlines |
| ● Water Source | Access Roads |
| ⊗ Completed Dozer Line | Local Roads |
| H Completed Hand Line | Forest Roads |
| R Completed Road as Line | Roadless Areas |



Page Number: 7

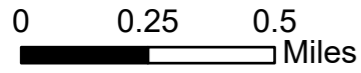


IAP Map

Jack Fire
OR-UPF-000265

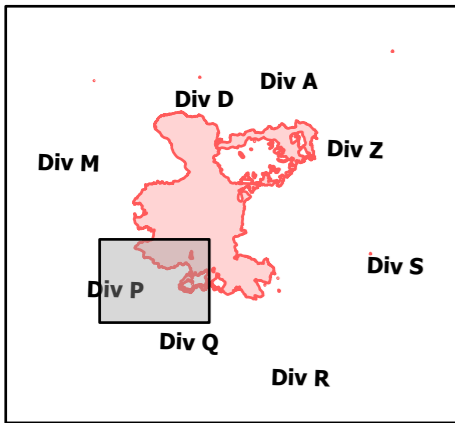
07/27/2021 - 24hr

21,881 acres at 07/26/2021 @ 1056



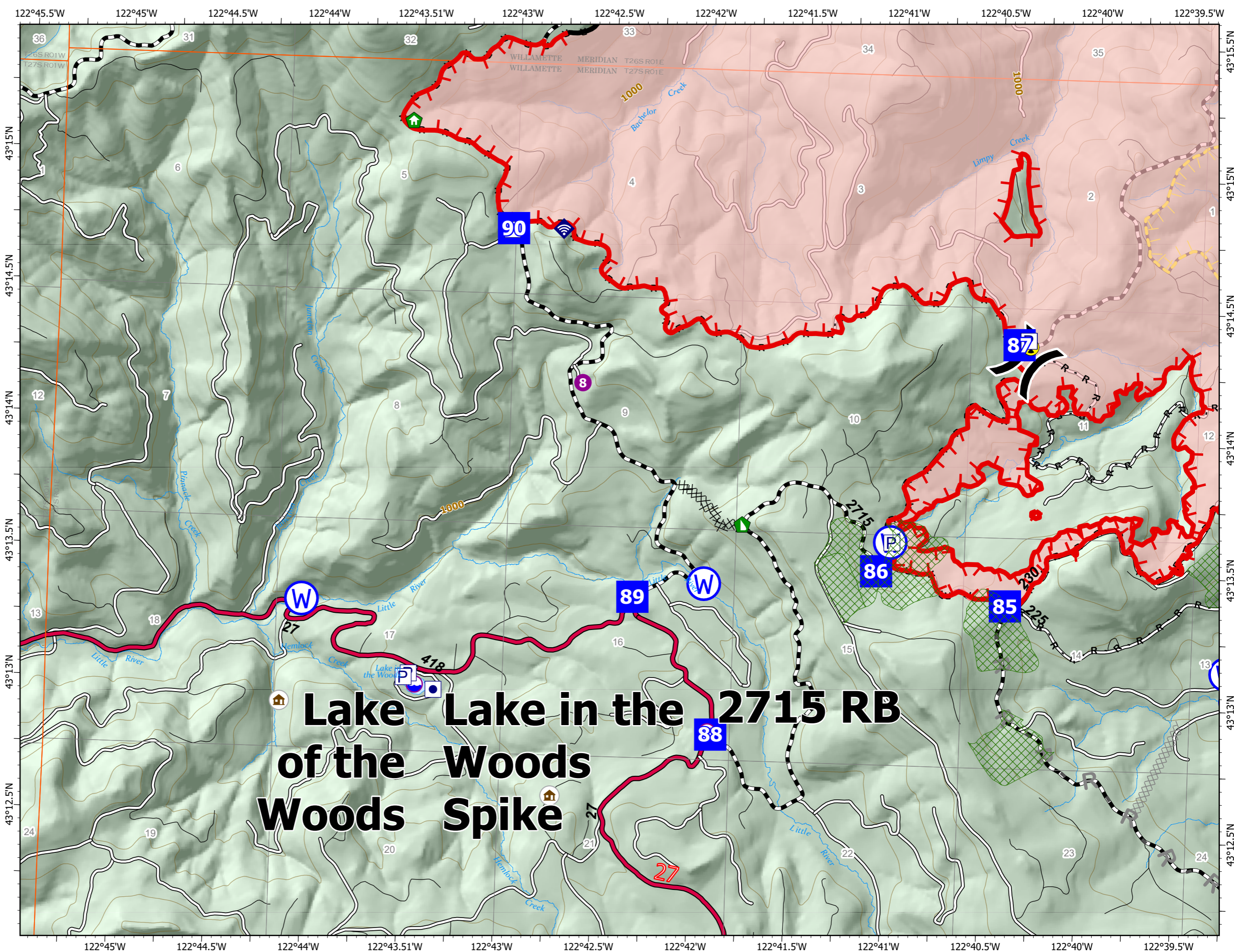
- Check Point
- Dip Site
- Helispot
- Division Break
- Drop Point
- Camp
- Structure Wrap
- Dozer Push
- Internet Access
- Hazard
- Water Source
- Completed Dozer Line
- Completed Hand Line
- Completed Road as Line
- Planned Dozer Line
- Planned Road as Line
- Retardant Drop
- Fire Edge
- Contained Line
- Other
- Prescribed Fire
- Wildfire Daily Fire Perimeter
- Utility Power Lines
- JackFireStructures_pt
- Timber Sale
- Wilderness
- ATP
- Area to Protect (ATP)
- Hwy
- FS Mainlines
- Access Roads
- Local Roads
- Forest Roads
- Roadless Areas

Page Number: 8



7/26/2021 2100

North American 1983 Datum. LatLong Grid



Lake in the Woods Woods Spike

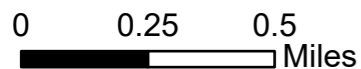
2715 RB

IAP Map

Jack Fire
OR-UPF-000265

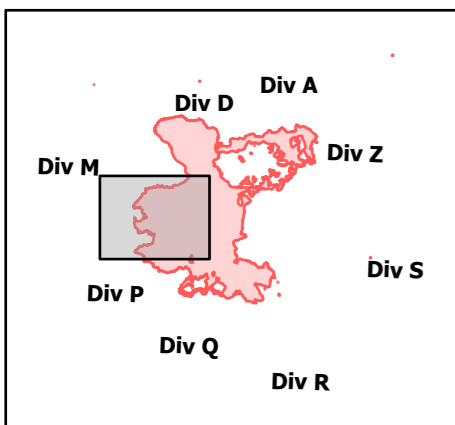
07/27/2021 - 24hr

21,881 acres at 07/26/2021 @ 1056



- Check Point
- Dip Site
- Helispot
- Drop Point
- ⚙ Bridge
- 🏠 Structure Wrap
- 🏠 Repair Point
- 🏠 Dozer Push
- ⊕ Water Source
- ⌘ Completed Dozer Line
- H Completed Hand Line
- R Completed Road as Line
- R Planned Road as Line
- 🚒 Retardant Drop
- 🔥 Fire Edge
- ▬ Contained Line
- ▬ Other
- 🔥 Prescribed Fire
- 🔥 Wildfire Daily Fire Perimeter
- ⚡ Utility Power Lines
- 🏠 JackFireStructures_pt
- 🌲 Timber Sale
- 🌲 Wilderness
- ⬠ ATP
- ▬ Area to Protect (ATP)
- 🛣 Hwy
- 🛣 FS Mainlines
- 🛣 Access Roads
- 🛣 Local Roads
- 🛣 Forest Roads
- 🛣 Roadless Areas

Page Number: 9



7/26/2021 2100

North American 1983 Datum. LatLong Grid

