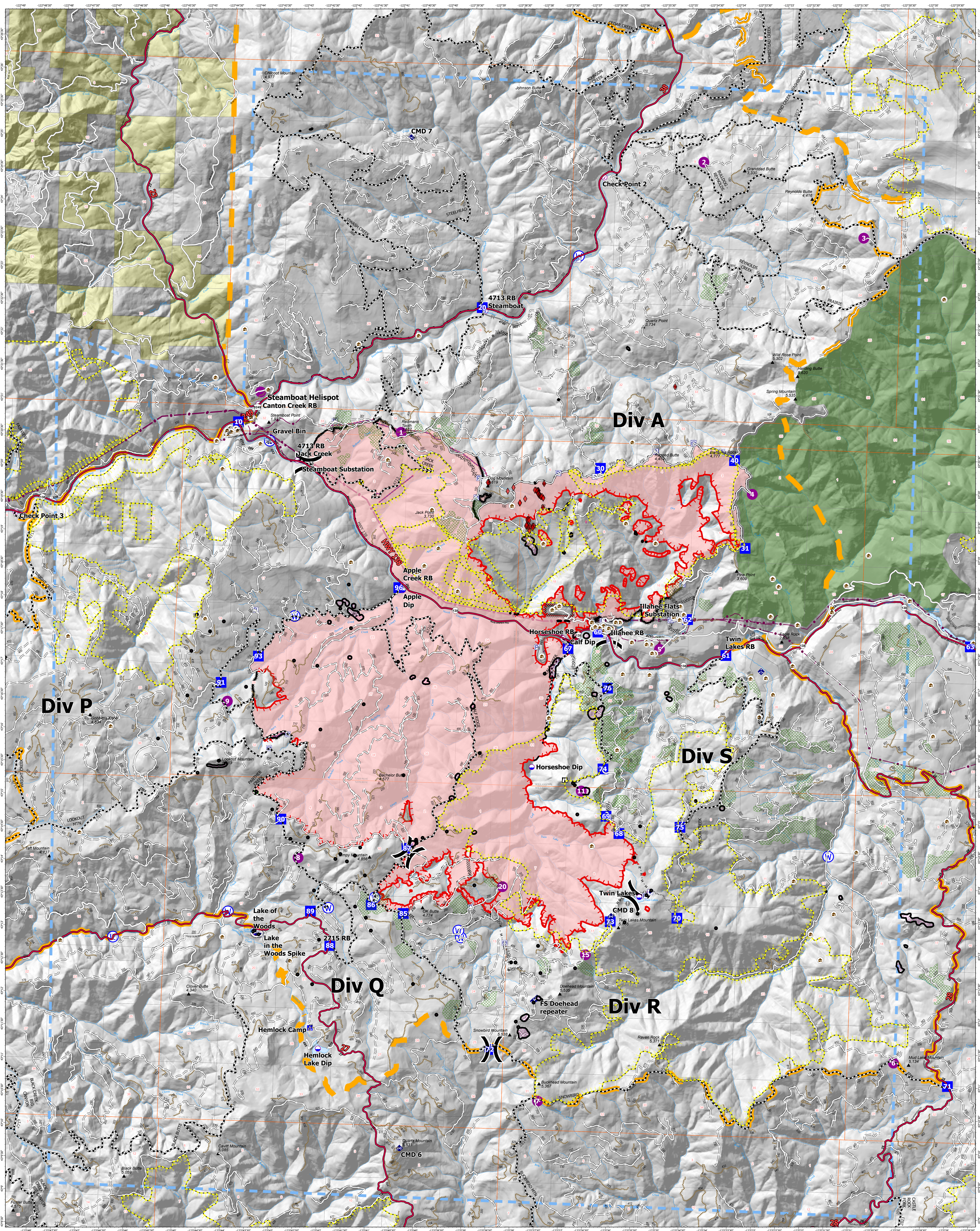




07/27/2021 - 24 HR
OR-UPF-000265



22,074 Est. Acres

Acres from IR 07/26/2021 @ 2246

Datum: NAD 1983

| | | | | | | | | | |
|--|---|---|--|---|---|--|---|--|---|
| | <ul style="list-style-type: none">StructuresATPArea to Protect (ATP)Other PropertyPumpWater TankCheck Point | <ul style="list-style-type: none">Dip SiteHelispotSling SiteDivision BreakDrop PointCampLookout | <ul style="list-style-type: none">Value at RiskWater Development or Draft SiteStructure WrapHazard TreeMobile Weather UnitRepeaterHazard | <ul style="list-style-type: none">Water SourceCompleted Dozer LineCompleted Hand LineCompleted Road on LinePlanned Dozer LinePlanned Hand LinePlanned Mixed Construction Line | <ul style="list-style-type: none">Planned Road as LineAccess or Improved RoadOtherIndicated DropTemporary Flight RestrictionFire EdgeContained Line | <ul style="list-style-type: none">Wildfire Daily Fire PerimeterArea ClosureUtility Power Lines | <ul style="list-style-type: none">Secondary HighwayPaved RoadsDirt (Not Paved)Interstate Not PavedUS Route Not PavedRoadless Areas | <p>Roads</p> <ul style="list-style-type: none">A - ArterialC - CollectorPrimary Highway | <p>Temperature: 82° Relative Humidity: 40% Wind Direction: NW Wind Speed: 4-6 mph Gust 15</p> |
|--|---|---|--|---|---|--|---|--|---|