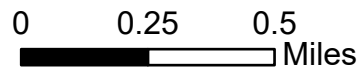


IAP Map

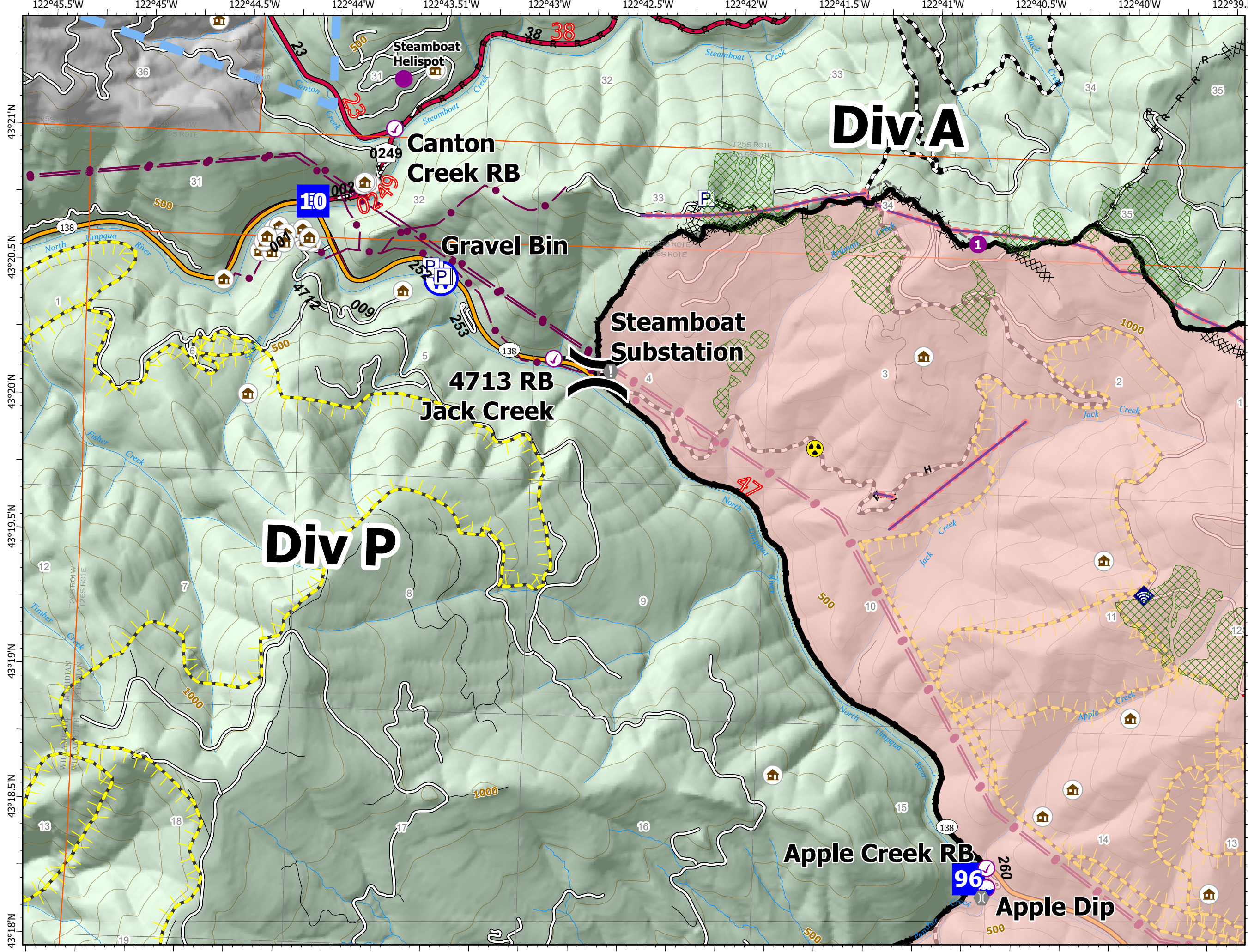
Jack Fire
OR-UPF-000265

07/28/2021 - 24hr

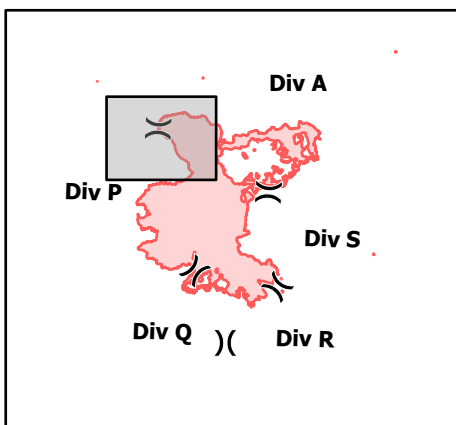
22,074 acres at 07/26/2021 @ 2246



- Check Point
 - Dip Site
 - Helispot
 - ⌋ Division Break
 - Drop Point
 - ⊕ Value at Risk
 - ⌒ Bridge
 - ⌒ Repair Point
 - ⌒ Landing or Log Deck
 - ⌒ Internet Access
 - ⊕ Hazard
 - ⊕ Water Source
 - ⌒ Completed Dozer Line
 - ⌒ Completed Hand Line
 - ⌒ Completed Road as Line
 - ⌒ Other
 - ⌒ Retardant Drop
 - ⌒ Temporary Flight Restriction
- ▬ Fire Edge
 - ▬ Contained Line
 - ▬ Other
 - ▬ Prescribed Fire
 - ▬ Wildfire Daily Fire Perimeter
 - ▬ Utility Power Lines
 - ⌒ JackFireStructures_pt
 - ▬ Timber Sale
 - ▬ Wilderness
 - ▬ ATP
 - ▬ Area to Protect (ATP)
 - ▬ Hwy
 - ▬ FS Mainlines
 - ▬ Access Roads
 - ▬ Local Roads
 - ▬ Forest Roads
 - ▬ Roadless Areas



Page Number: 1



7/27/2021 1854

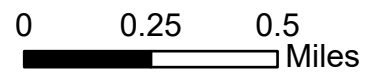
North American 1983 Datum. LatLong Grid

IAP Map

Jack Fire
OR-UPF-000265

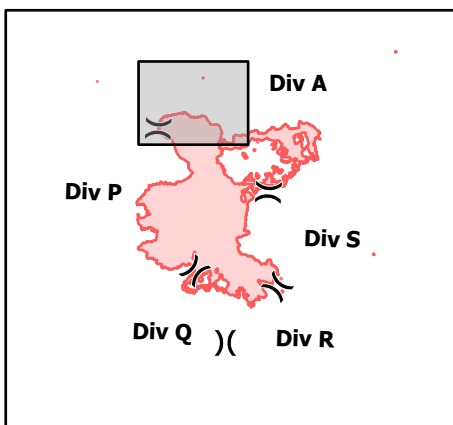
07/28/2021 - 24hr

22,074 acres at 07/26/2021 @ 2246



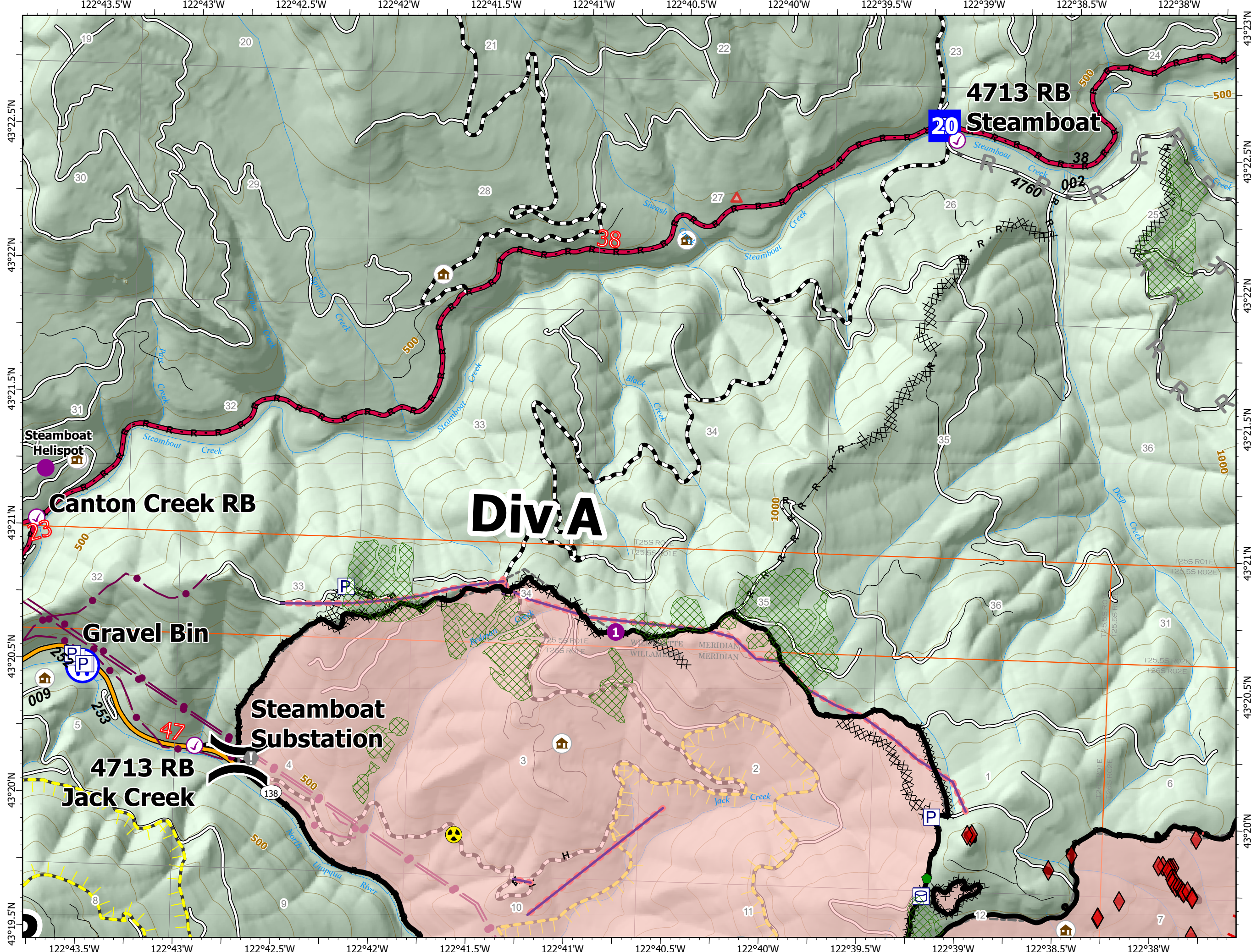
- Check Point
- Helispot
- ⌋ Division Break
- Drop Point
- ⚠ Value at Risk
- 🏠 Repair Point
- ☠ Hazard
- 🌊 Water Source
- ⌘ Completed Dozer Line
- H Completed Hand Line
- R Completed Road as Line
- R Planned Road as Line
- - - Other
- 🔴 Retardant Drop
- 🔴 Fire Edge
- 🔴 Contained Line
- 🔴 Other
- 🔴 Prescribed Fire
- 🔴 Wildfire Daily Fire Perimeter
- ⚡ Utility Power Lines
- 🏠 JackFireStructures_pt
- 🌲 Timber Sale
- 🌲 Wilderness
- ⬠ ATP
- 🛡 Area to Protect (ATP)
- 🛞 Hwy
- 🔴 FS Mainlines
- 🛞 Access Roads
- 🛞 Local Roads
- 🛞 Forest Roads
- 🛞 Roadless Areas

Page Number: 2



7/27/2021 1854

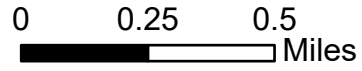
North American 1983 Datum. LatLong Grid



IAP Map

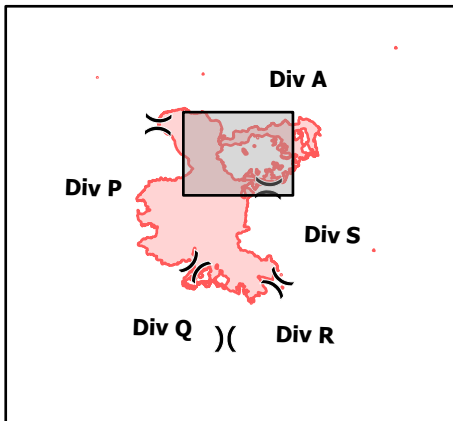
Jack Fire
OR-UPF-000265
07/28/2021 - 24hr

22,074 acres at 07/26/2021 @ 2246



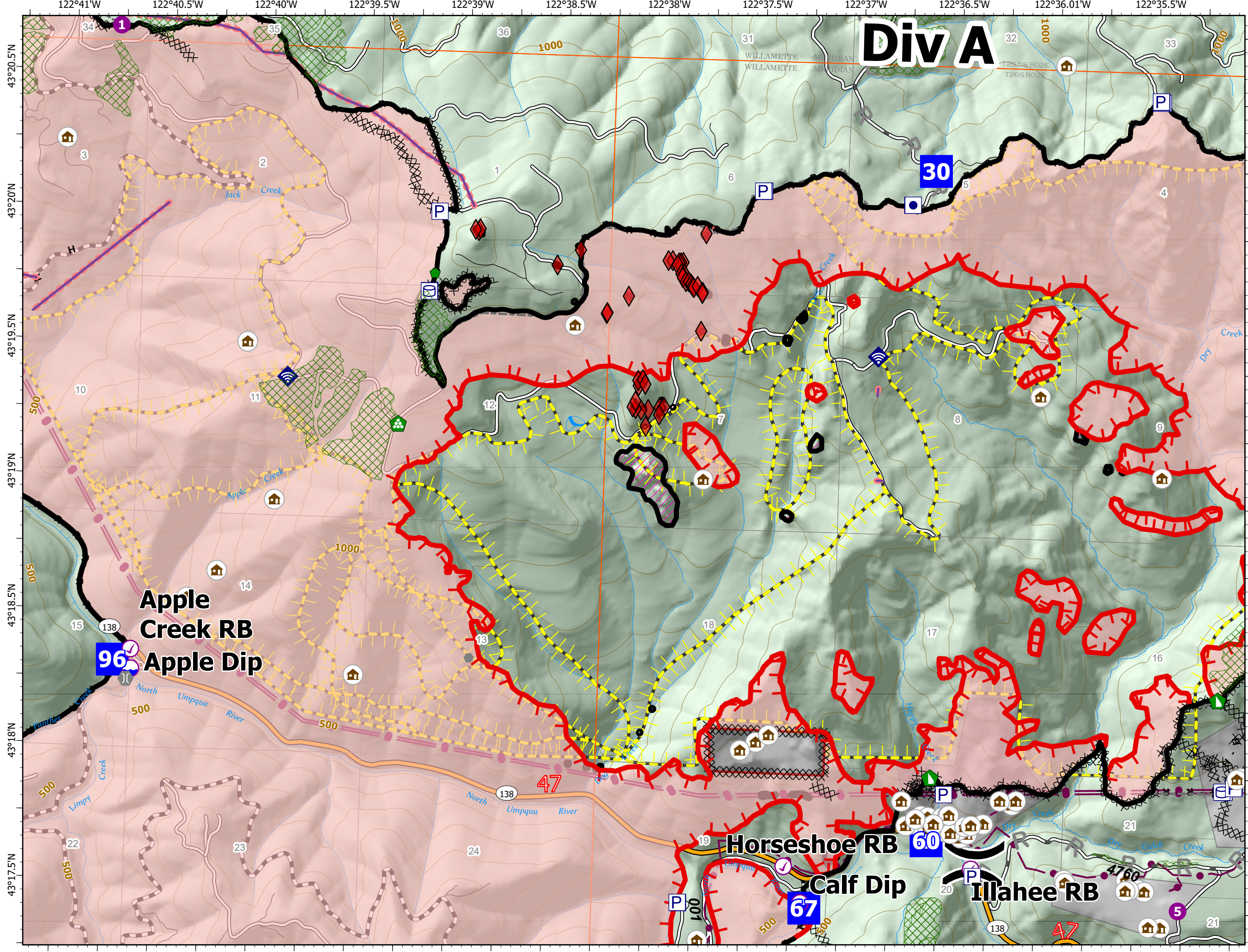
- Check Point
- Dip Site
- Helispot
-) (Division Break
- Drop Point
- Value at Risk
- Other
- Bridge
- Water Development or Draft Site
- Repair Point
- Landing or Log Deck
- Dozer Push
- Internet Access
- ⊗ Completed Dozer Line
- H Completed Hand Line
- R Completed Road as Line
- R Planned Road as Line
- Other
- Retardant Drop
- Fire Edge
- Contained Line
- Other
- Prescribed Fire
- Wildfire Daily Fire Perimeter
- Utility Power Lines
- 🏠 JackFireStructures_pt
- 🌲 Timber Sale
- 🌲 Wilderness
- ⬠ ATP
- ⬠ Area to Protect (ATP)
- Hwy
- FS Mainlines
- Access Roads
- Local Roads
- Forest Roads
- Roadless Areas

Page Number: 3



7/27/2021 1854

North American 1983 Datum. LatLong Grid



Div A

Apple
Creek RB
Apple Dip

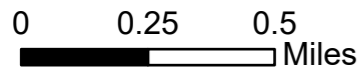
Horseshoe RB
Calf Dip

Illahee RB

IAP Map

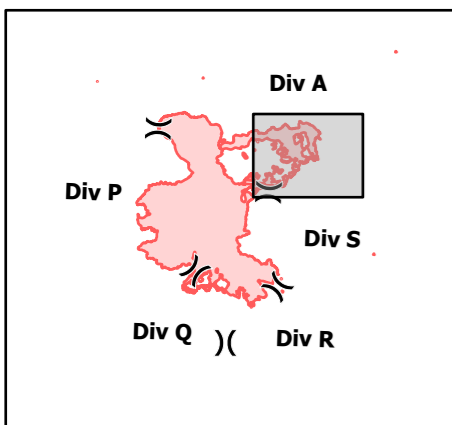
Jack Fire
OR-UPF-000265
07/27/2021 - 24hr

22,074 acres at 07/26/2021 @ 2246



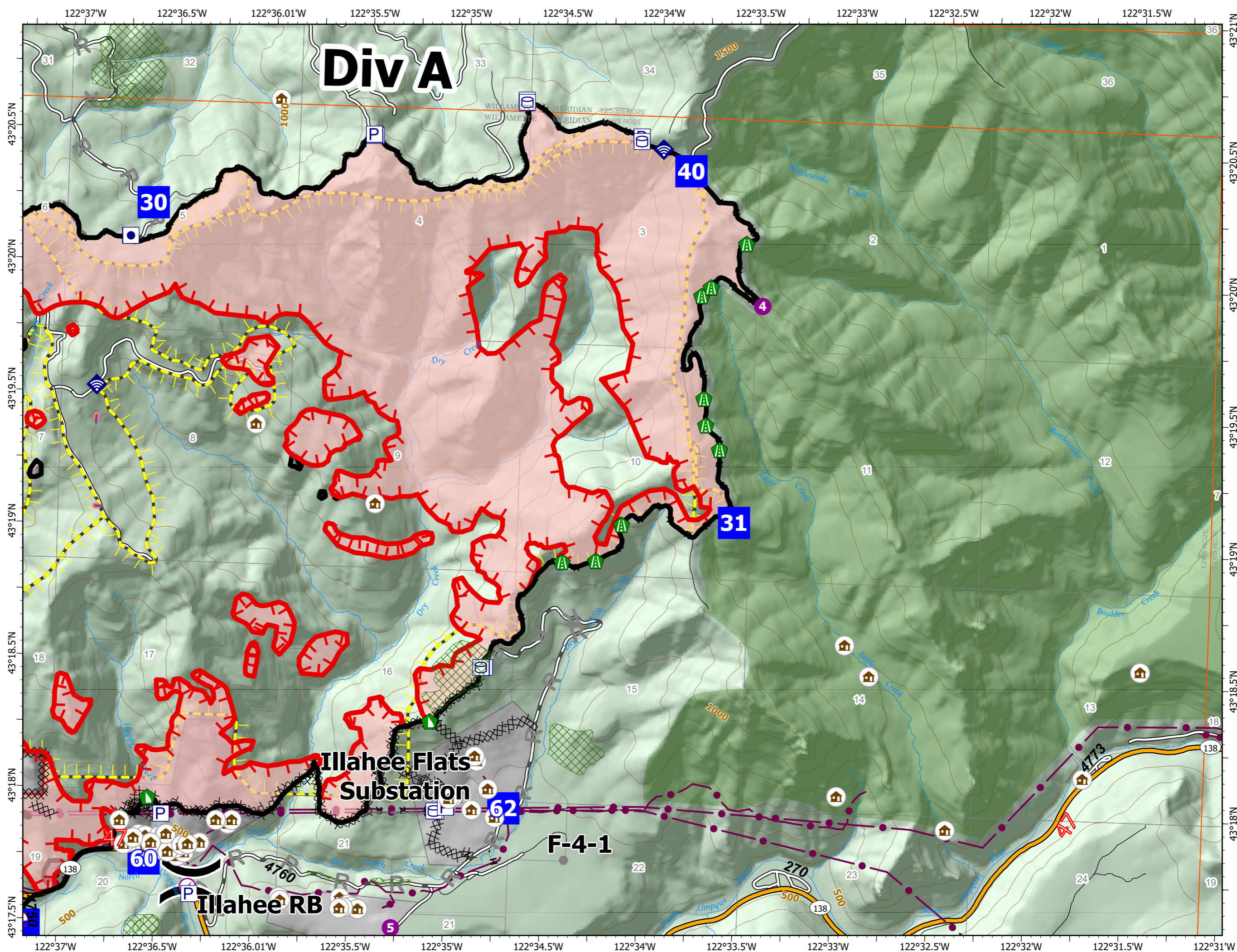
- Check Point
- Dip Site
- Helispot
-) (Division Break
- Drop Point
- Value at Risk
- Other
- ▲ Road Repair
- ▲ Dozer Push
- ◆ Internet Access
- XX Completed Dozer Line
- H Completed Hand Line
- R Completed Road as Line
- R Planned Road as Line
- Other
- Retardant Drop
- Fire Edge
- Contained Line
- Other
- Prescribed Fire
- Wildfire Daily Fire Perimeter
- Utility Power Lines
- 🏠 JackFireStructures_pt
- 🌲 Timber Sale
- 🌲 Wilderness
- ⬠ ATP
- Area to Protect (ATP)
- 🛣️ Hwy
- 🛣️ FS Mainlines
- 🛣️ Access Roads
- 🛣️ Local Roads
- 🛣️ Forest Roads
- 🛣️ Roadless Areas

Page Number: 4



7/27/2021 1846

North American 1983 Datum. LatLong Grid

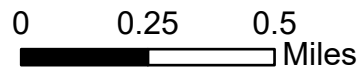


IAP Map

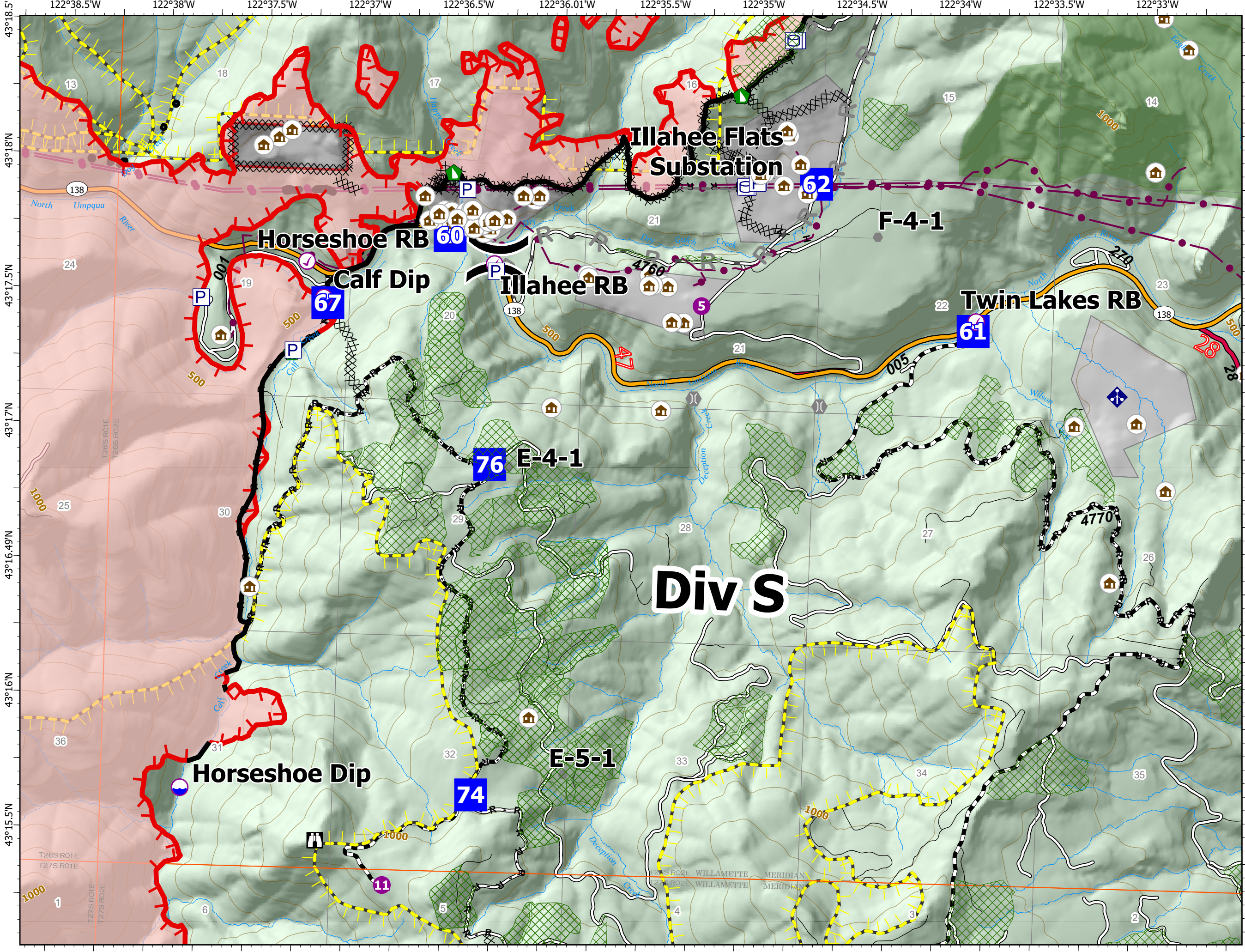
Jack Fire
OR-UPF-000265

07/28/2021 - 24hr

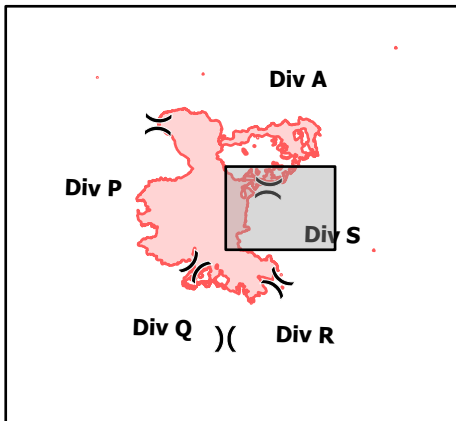
22,074 acres at 07/26/2021 @ 2246



- Check Point
- Dip Site
- Helispot
-) (Division Break
- Drop Point
- ⚠ Lookout
- Value at Risk
- Other
- ⚙ Bridge
- 🌿 Water Development or Draft Site
- 🚧 Dozer Push
- 📡 Mobile Weather Unit
- ⊗ Completed Dozer Line
- H Completed Hand Line
- R Completed Road as Line
- R Planned Road as Line
- - - Other
- 🔥 Fire Edge
- ▬ Contained Line
- ▬ Other
- 🔥 Prescribed Fire
- 🔥 Wildfire Daily Fire Perimeter
- ⚡ Utility Power Lines
- 🏠 JackFireStructures_pt
- 🌲 Timber Sale
- 🌲 Wilderness
- ⬠ ATP
- 🛡 Area to Protect (ATP)
- 🛣 Hwy
- 🛣 FS Mainlines
- 🛣 Access Roads
- 🛣 Local Roads
- 🛣 Forest Roads
- 🛣 Roadless Areas



Page Number: 5



7/27/2021 1854

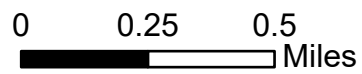
North American 1983 Datum. LatLong Grid

IAP Map

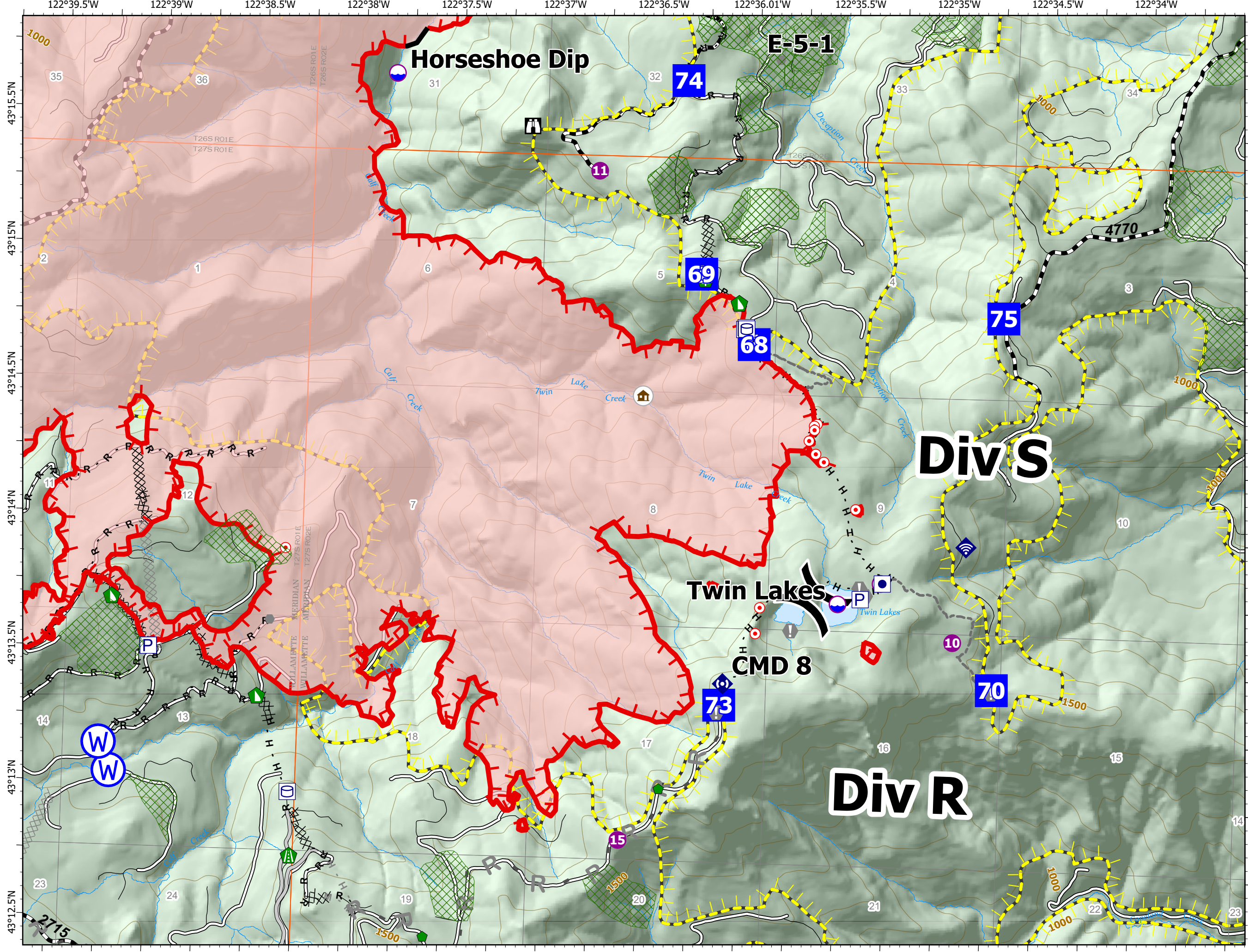
Jack Fire
OR-UPF-000265

07/28/2021 - 24hr

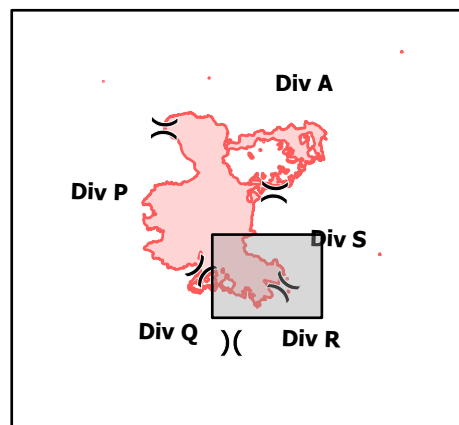
22,074 acres at 07/26/2021 @ 2246



- Dip Site
- Helispot
- Sling Site
- Division Break
- Drop Point
- Lookout
- Hot Spot - Spot Fire
- Value at Risk
- Road Repair
- Repair Point
- Hazard Tree
- Dozer Push
- Internet Access
- Repeater
- Water Source
- Completed Dozer Line
- Completed Hand Line
- Completed Road as Line
- Planned Dozer Line
- Planned Hand Line
- M Planned Mixed Construction Line
- R Planned Road as Line
- Access or Improved Road
- Other
- Fire Edge
- Contained Line
- Other
- Prescribed Fire
- Wildfire Daily Fire Perimeter
- Utility Power Lines
- JackFireStructures_pt
- Timber Sale
- Wilderness
- ATP
- Area to Protect (ATP)
- Hwy
- FS Mainlines
- Access Roads
- Local Roads
- Forest Roads
- Roadless Areas



Page Number: 6



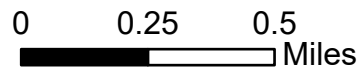
7/27/2021 1854

North American 1983 Datum. LatLong Grid

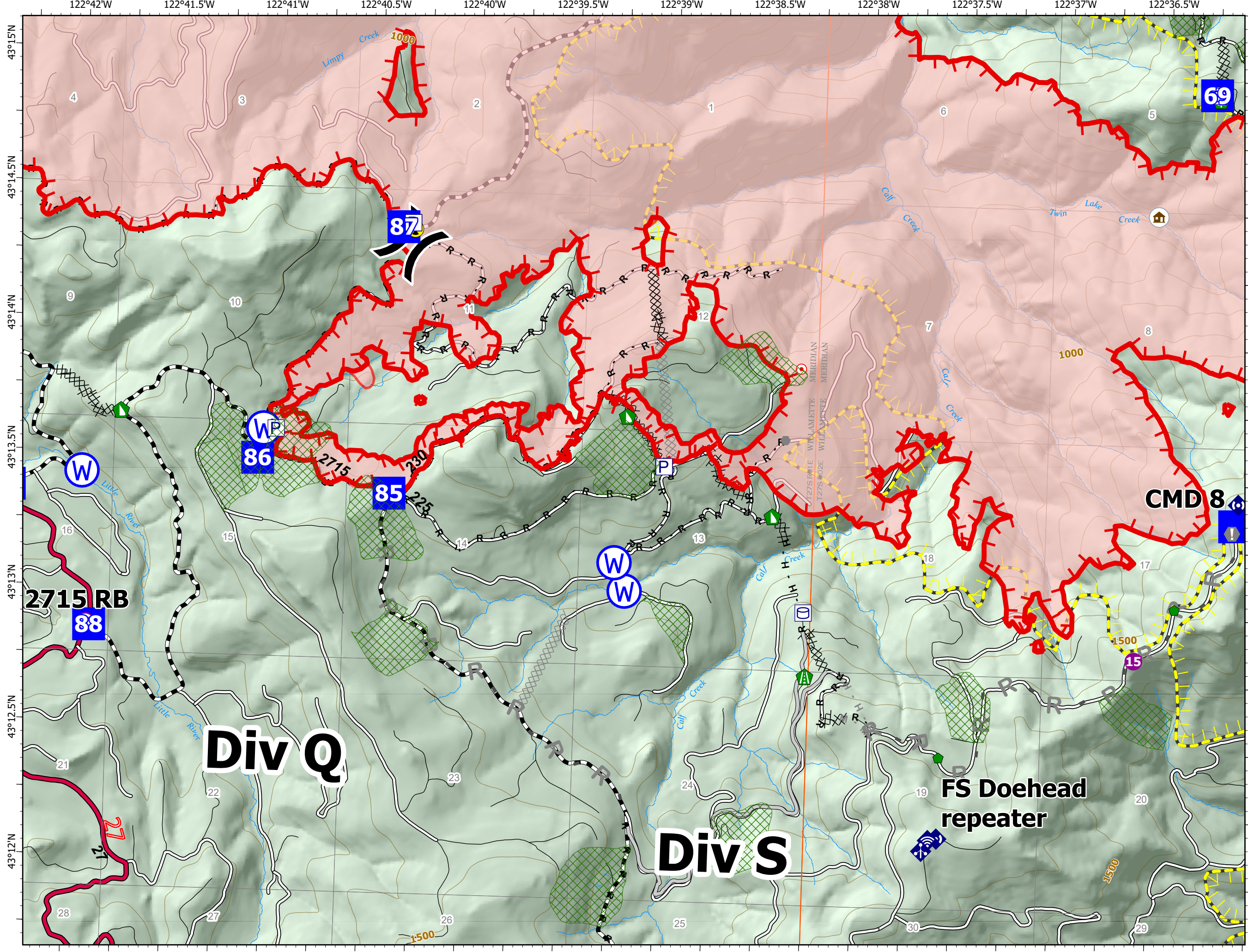
IAP Map

Jack Fire
OR-UPF-000265
07/28/2021 - 24hr

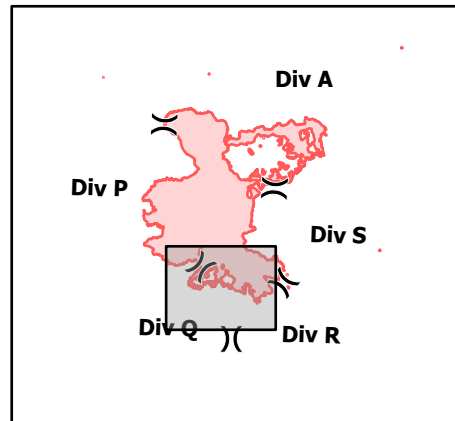
22,074 acres at 07/26/2021 @ 2246



- Check Point
- Helispot
- ⌘ Sling Site
- ⌘ Division Break
- ⌘ Drop Point
- ⌘ Camp
- Hot Spot - Spot Fire
- Value at Risk
- Other
- Road Repair
- Repair Point
- Hazard Tree
- Dozer Push
- Mobile Weather Unit
- Internet Access
- Repeater
- Hazard
- Water Source
- ⌘ Completed Dozer Line
- ⌘ Completed Hand Line
- ⌘ Completed Road as Line
- ⌘ Planned Dozer Line
- H Planned Hand Line
- M Planned Mixed Construction Line
- R Planned Road as Line
- Access or Improved Road
- Retardant Drop
- Fire Edge
- Other
- Prescribed Fire
- Wildfire Daily Fire Perimeter
- Utility Power Lines
- 🏠 JackFireStructures_pt
- 🌲 Timber Sale
- 🌲 Wilderness
- ⬠ ATP
- ⬠ Area to Protect (ATP)
- Hwy
- FS Mainlines
- Access Roads
- Local Roads
- Forest Roads
- Roadless Areas



Page Number: 7

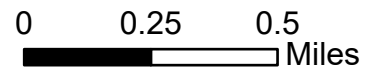


IAP Map

Jack Fire
OR-UPF-000265

07/28/2021 - 24hr

22,074 acres at 07/26/2021 @ 2246



- Check Point
- Dip Site
- Mobile Retardant Base
- Helispot
- ⌋ Division Break
- Drop Point
- ▣ Camp
- 🏠 Structure Wrap
- 🏠 Dozer Push
- 📶 Internet Access
- ⚠ Hazard
- 🌊 Water Source
- ⌘ Completed Dozer Line
- ⌘ Completed Hand Line
- ⌘ Completed Road as Line
- ⌘ Planned Dozer Line
- ⌘ Planned Road as Line
- 🚒 Retardant Drop
- ▬ Fire Edge
- ▬ Contained Line
- ▬ Other
- ▬ Prescribed Fire
- ▬ Wildfire Daily Fire Perimeter
- ▬ Utility Power Lines
- 🏠 JackFireStructures_pt
- ▭ Timber Sale
- ▭ Wilderness
- ▭ ATP
- ▭ Area to Protect (ATP)
- ▬ Hwy
- ▬ FS Mainlines
- ▬ Access Roads
- ▬ Local Roads
- ▬ Forest Roads
- ▬ Roadless Areas

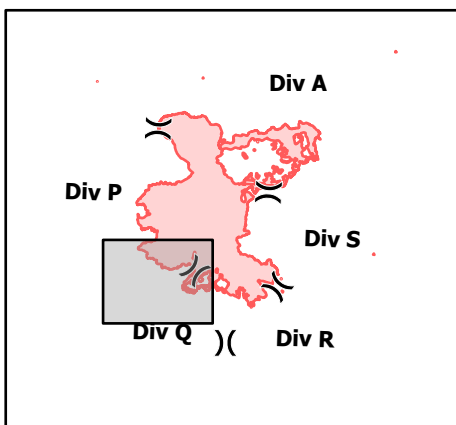
Div P

Gel Plant

Lake in the Woods Spike 2715 RB

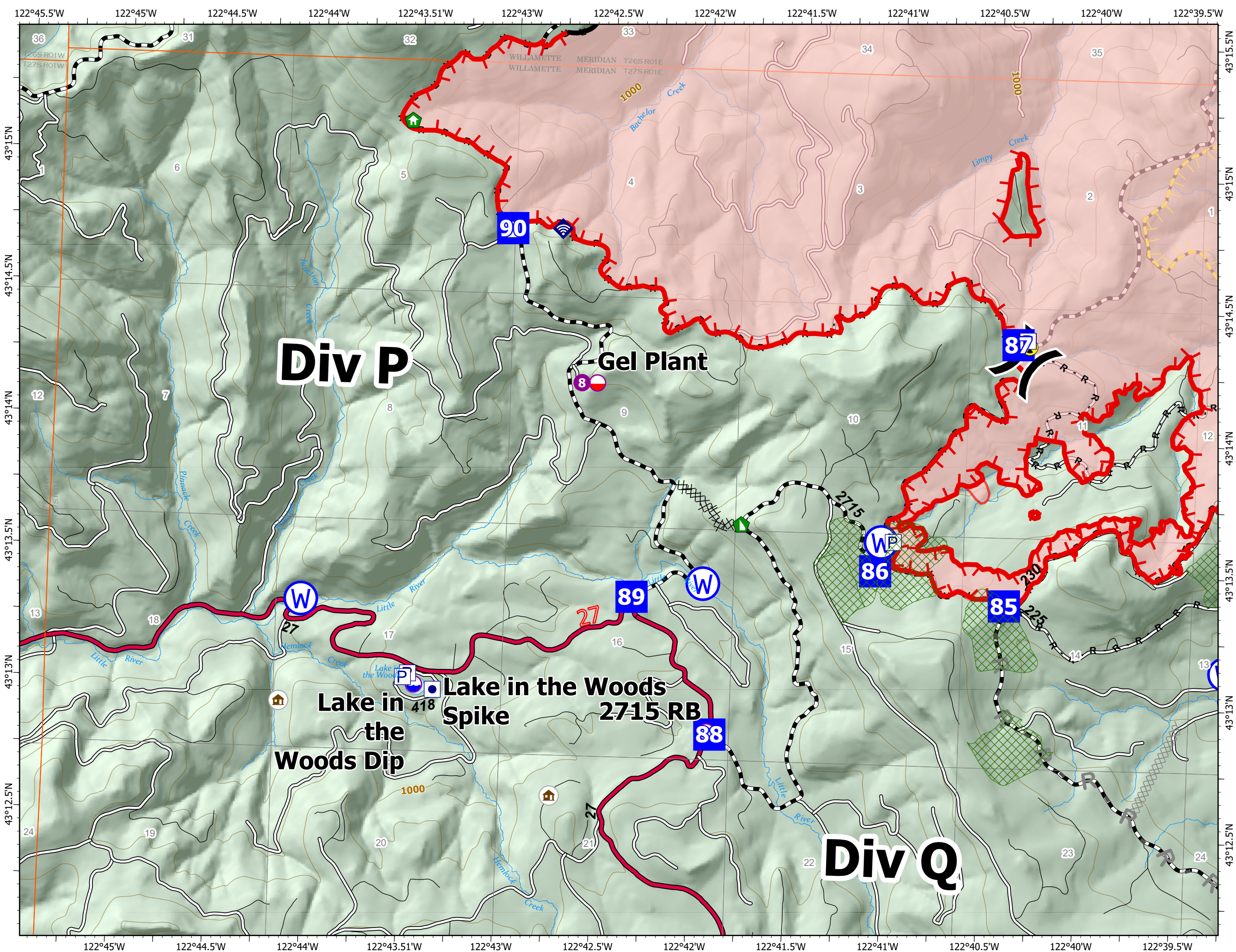
Div Q

Page Number: 8



7/27/2021 1855

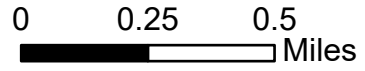
North American 1983 Datum. LatLong Grid



IAP Map

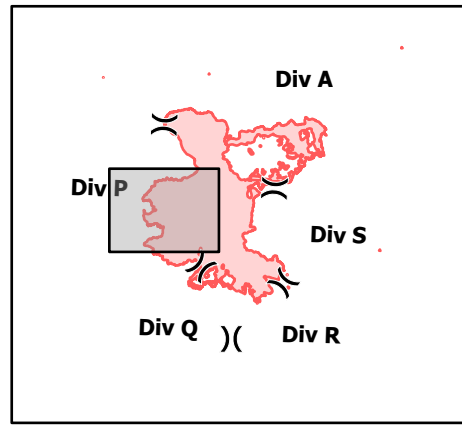
Jack Fire
OR-UPF-000265
07/28/2021 - 24hr

22,074 acres at 07/26/2021 @ 2246



- Check Point
- Dip Site
- Helispot
- Drop Point
- Bridge
- Structure Wrap
- Repair Point
- Dozer Push
- Internet Access
- Water Source
- Completed Dozer Line
- Completed Hand Line
- Completed Road as Line
- Planned Road as Line
- Retardant Drop
- Fire Edge
- Contained Line
- Other
- Prescribed Fire
- Wildfire Daily Fire Perimeter
- Utility Power Lines
- JackFireStructures_pt
- Timber Sale
- Wilderness
- ATP
- Area to Protect (ATP)
- Hwy
- FS Mainlines
- Access Roads
- Local Roads
- Forest Roads
- Roadless Areas

Page Number: 9



7/27/2021 1855

North American 1983 Datum. LatLong Grid

