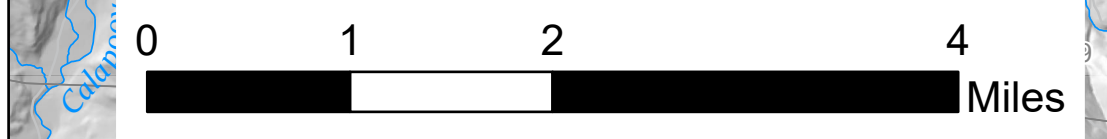


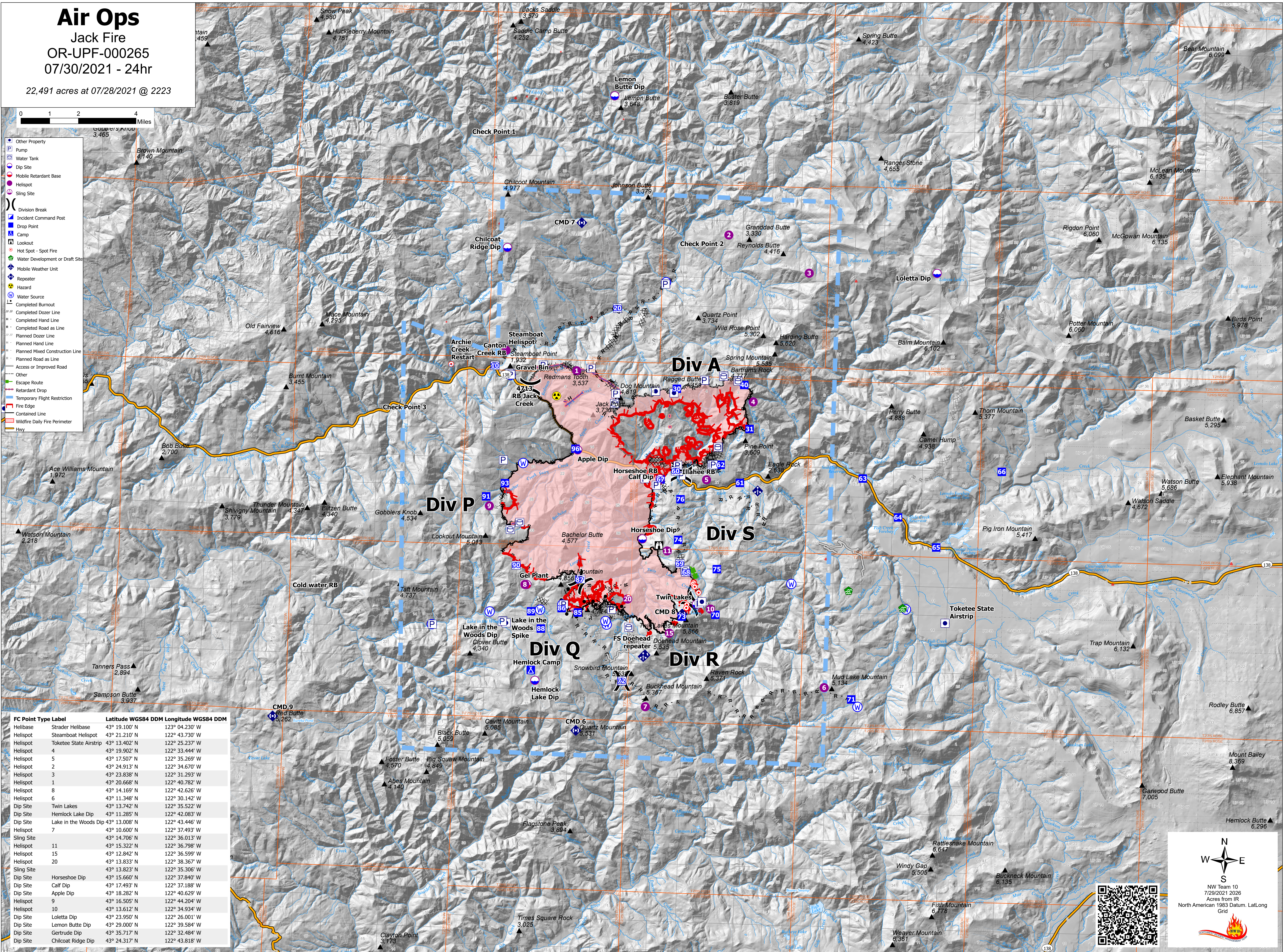
Air Ops

Jack Fire
OR-UPF-000265
07/30/2021 - 24hr

22,491 acres at 07/28/2021 @ 2223



- Other Property
- Pump
- Water Tank
- Dip Site
- Mobile Retardant Base
- Helispot
- Sling Site
- Division Break
- Incident Command Post
- Drop Point
- Camp
- Lookout
- Hot Spot - Spot Fire
- Water Development or Draft Site
- Mobile Weather Unit
- Repeater
- Hazard
- Water Source
- Completed Burnout
- Completed Dozer Line
- Completed Hand Line
- Completed Road as Line
- Planned Dozer Line
- Planned Hand Line
- Planned Mixed Construction Line
- Planned Road as Line
- Access or Improved Road
- Other
- Escape Route
- Retardant Drop
- Temporary Flight Restriction
- Fire Edge
- Contained Line
- Wildfire Daily Fire Perimeter
- Hwy



FC Point Type Label	Latitude WGS84 DDM	Longitude WGS84 DDM
Helibase	Strader Helibase 43° 19.100' N	123° 04.230' W
Helispot	Steamboat Helispot 43° 21.210' N	122° 43.730' W
Helispot	Toketeetee State Airstrip 43° 13.402' N	122° 25.237' W
Helispot	4 43° 19.902' N	122° 33.444' W
Helispot	5 43° 17.507' N	122° 35.269' W
Helispot	2 43° 24.913' N	122° 34.670' W
Helispot	3 43° 23.838' N	122° 31.293' W
Helispot	1 43° 20.668' N	122° 40.782' W
Helispot	8 43° 14.169' N	122° 42.626' W
Helispot	6 43° 11.348' N	122° 30.142' W
Dip Site	Twin Lakes 43° 13.742' N	122° 35.522' W
Dip Site	Hemlock Lake Dip 43° 11.285' N	122° 42.083' W
Dip Site	Lake in the Woods Dip 43° 13.008' N	122° 43.446' W
Helispot	7 43° 10.600' N	122° 37.493' W
Sling Site	43° 14.706' N	122° 36.013' W
Helispot	11 43° 15.322' N	122° 36.798' W
Helispot	15 43° 12.842' N	122° 36.599' W
Helispot	20 43° 13.833' N	122° 38.367' W
Sling Site	43° 13.823' N	122° 35.306' W
Dip Site	Horseshoe Dip 43° 15.660' N	122° 37.840' W
Dip Site	Calif Dip 43° 17.493' N	122° 37.188' W
Dip Site	Apple Dip 43° 18.282' N	122° 40.629' W
Helispot	9 43° 16.505' N	122° 44.204' W
Helispot	10 43° 13.612' N	122° 34.934' W
Dip Site	Loletta Dip 43° 23.950' N	122° 26.001' W
Dip Site	Lemon Butte Dip 43° 29.000' N	122° 39.584' W
Dip Site	Gertrude Dip 43° 35.717' N	122° 32.484' W
Dip Site	Chilcoat Ridge Dip 43° 24.317' N	122° 43.818' W

N
S
E
W

NW Team 10
7/29/2021 2026
Acres from IR
North American 1983 Datum, Lat/Long
Grid

