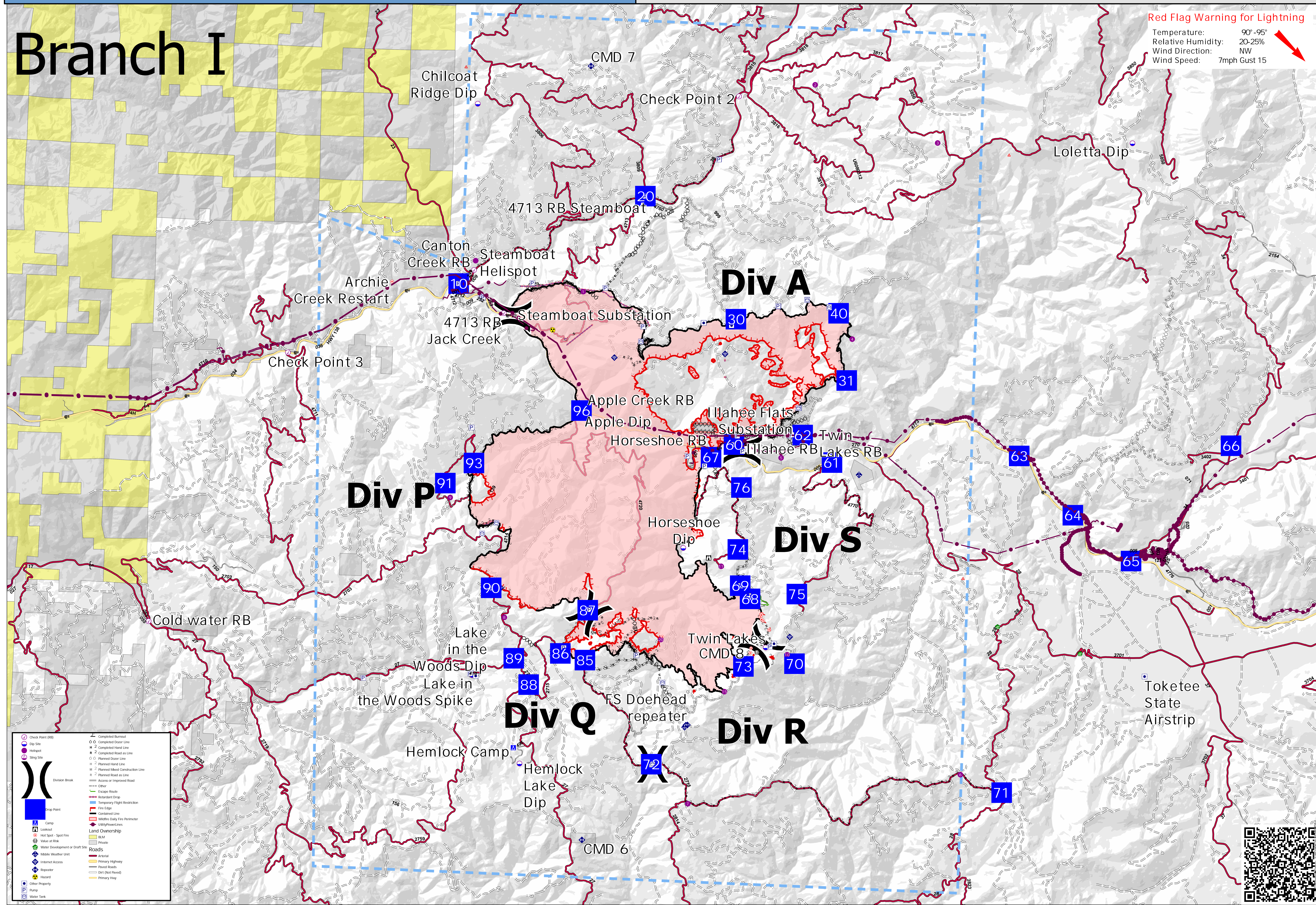




Red Flag Warning for Lightning
Temperature: 90°-95°
Relative Humidity: 20-25%
Wind Direction: NW
Wind Speed: 7mph Gust 15

Branch I



- Check Point (CP)
- Dip Site
- Helispot
- Sling Site
- Division Break
- Hot Spot - Spot Fire
- Value at Risk
- Water Development or Draft Site
- Mobile Weather Unit
- Infrared Access
- Responder
- Hazard
- Other Property
- Pump
- Water Tank
- Completed Burnout
- Completed Deer Line
- Completed Hand Line
- Completed Road as Line
- Planned Deer Line
- Planned Hand Line
- Planned Mixed Construction Line
- Planned Road as Line
- Access or Improved Road
- Other
- Escape Route
- Retardant Drop
- Temporary Right Restriction
- Fire Edge
- Contained Line
- Wildfire Daily Fire Perimeter
- Wildfire Lines
- Land Ownership
- BLM
- Private
- Roads
- Arterial
- Primary Highway
- Paved Roads
- Dirt (Not Paved)
- Primary Hwy

