

Briefing Map

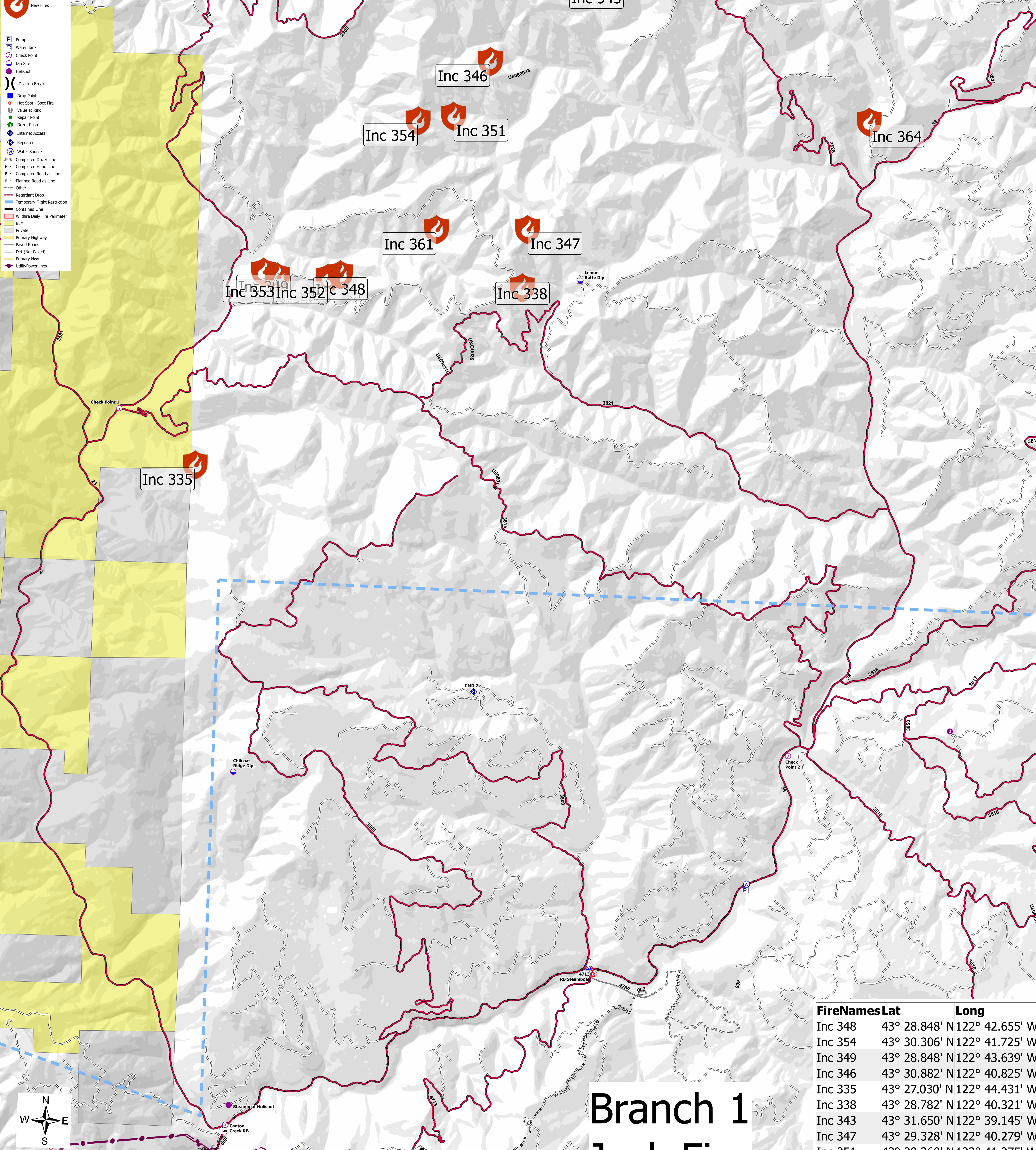
Initial Attack Fires
07/30/2021 - 24hr

22,491 acres at 07/28/2021 @ 2223

Branch 2



- New Fires
- Pump
- Water Tank
- Check Point
- Dip Site
- Hellsite
- Division Break
- Drop Point
- Hot Spot - Spot Fire
- Value at Risk
- Repair Point
- Dozer Push
- Internet Access
- Repeater
- Water Source
- Completed Dozer Line
- Completed Hand Line
- Completed Road as Line
- Planned Road as Line
- Other
- Retardant Drop
- Temporary Flight Restriction
- Contained Line
- Wildfire Daily Fire Perimeter
- BLM
- Private
- Primary Highway
- Paved Roads
- Dirt (Not Paved)
- Primary Hwy
- Utility Power Lines



Branch 1 Jack Fire

FireNames	Lat	Long
Inc 348	43° 28.848' N	122° 42.655' W
Inc 354	43° 30.306' N	122° 41.725' W
Inc 349	43° 28.848' N	122° 43.639' W
Inc 346	43° 30.882' N	122° 40.825' W
Inc 335	43° 27.030' N	122° 44.431' W
Inc 338	43° 28.782' N	122° 40.321' W
Inc 343	43° 31.650' N	122° 39.145' W
Inc 347	43° 29.328' N	122° 40.279' W
Inc 351	43° 30.360' N	122° 41.275' W
Inc 352	43° 28.812' N	122° 42.811' W
Inc 353	43° 28.806' N	122° 43.459' W
Inc 361	43° 29.298' N	122° 41.443' W
Inc 364	43° 30.432' N	122° 35.947' W



7/30/2021 1144
Acres from IR
North American 1983 Datum. Lat/Long
Grid