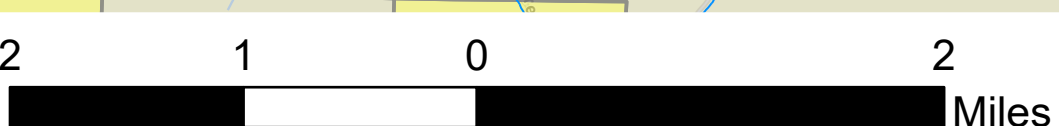


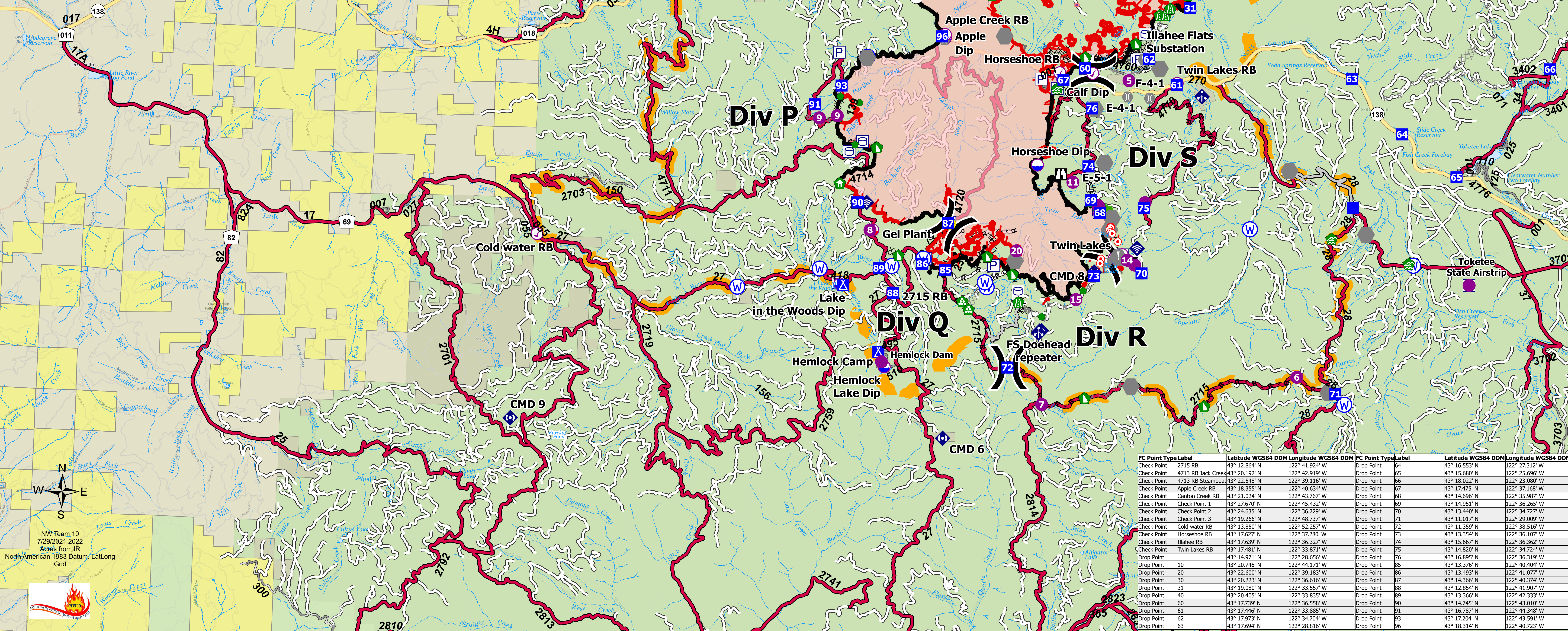
Transportation Map

Jack Fire
OR-UPF-000265
07/30/2021 - 24hr

22,491 acres at 07/28/2021 @ 2223



- Fire**
- Other Property
 - Pump
 - Water Tank
 - Check Point (RB)
 - Dip Site
 - Mobile Retardant Base
 - Helispot
 - Helibase
 - Sling Site
 - Mobile Weather Unit
 - Internet Access
 - Repeater
 - Hazard
 - Water Source
 - Completed Burnout
 - Completed Dozer Line
 - Completed Hand Line
 - Completed Road as Line
 - Planned Dozer Line
 - Planned Hand Line
 - Planned Mixed Construction Line
 - Planned Road as Line
 - Access or Improved Road
 - Other
 - Escape Route
 - Retardant Drop
 - Fire Edge
 - Contained Line
 - Wildfire Daily Fire Perimeter
 - Area Closure
 - Primary Hwy
 - Arterial
 - Paved Road
 - Gravel Road
 - Dirt Roads
 - Unimproved Roads
 - Incident Command Post
 - Drop Point
 - Camp
 - Lookout
 - Hot Spot - Spot Fire
 - Value at Risk
 - Other
 - Bridge
 - Water Development or Draft Site
 - Structure Wrap
 - Road Repair
 - Repair Point
 - Landing or Log Deck
 - Hazard Tree
 - Dozer Push



FC Point Type	Label	Latitude WGS84 DDM	Longitude WGS84 DDM	FC Point Type	Label	Latitude WGS84 DDM	Longitude WGS84 DDM
Check Point	2715 RB	43° 12.864' N	122° 41.924' W	Drop Point	54	43° 16.553' N	122° 27.312' W
Check Point	4713 RB Jack Creek	43° 20.192' N	122° 42.919' W	Drop Point	65	43° 15.680' N	122° 25.696' W
Check Point	4713 RB Steamboat	43° 22.548' N	122° 39.116' W	Drop Point	66	43° 18.022' N	122° 23.088' W
Check Point	Apple Creek RB	43° 18.355' N	122° 40.634' W	Drop Point	67	43° 17.475' N	122° 37.168' W
Check Point	Canton Creek RB	43° 21.024' N	122° 43.767' W	Drop Point	68	43° 14.696' N	122° 35.987' W
Check Point	Check Point 1	43° 27.670' N	122° 45.432' W	Drop Point	69	43° 14.951' N	122° 36.265' W
Check Point	Check Point 2	43° 24.635' N	122° 36.729' W	Drop Point	70	43° 13.440' N	122° 34.727' W
Check Point	Check Point 3	43° 19.266' N	122° 48.737' W	Drop Point	71	43° 11.017' N	122° 29.009' W
Check Point	Cold water RB	43° 13.850' N	122° 52.257' W	Drop Point	72	43° 11.359' N	122° 38.516' W
Check Point	Horseshoe RB	43° 17.627' N	122° 37.280' W	Drop Point	73	43° 13.354' N	122° 36.107' W
Check Point	Illahae RB	43° 17.630' N	122° 36.327' W	Drop Point	74	43° 15.667' N	122° 36.362' W
Check Point	Twin Lakes RB	43° 17.481' N	122° 33.871' W	Drop Point	75	43° 14.820' N	122° 34.724' W
Drop Point	10	43° 20.746' N	122° 44.171' W	Drop Point	76	43° 16.895' N	122° 36.319' W
Drop Point	20	43° 22.600' N	122° 39.183' W	Drop Point	85	43° 13.376' N	122° 40.404' W
Drop Point	30	43° 20.223' N	122° 36.616' W	Drop Point	86	43° 13.493' N	122° 41.077' W
Drop Point	31	43° 19.080' N	122° 33.557' W	Drop Point	87	43° 14.366' N	122° 40.374' W
Drop Point	40	43° 20.405' N	122° 33.835' W	Drop Point	88	43° 12.854' N	122° 41.907' W
Drop Point	50	43° 17.739' N	122° 36.558' W	Drop Point	89	43° 13.366' N	122° 42.333' W
Drop Point	60	43° 17.446' N	122° 33.885' W	Drop Point	90	43° 14.745' N	122° 43.010' W
Drop Point	61	43° 17.446' N	122° 33.885' W	Drop Point	91	43° 16.787' N	122° 44.348' W
Drop Point	62	43° 17.973' N	122° 34.704' W	Drop Point	93	43° 17.204' N	122° 43.591' W
Drop Point	63	43° 17.694' N	122° 28.816' W	Drop Point	96	43° 18.314' N	122° 40.723' W

NW Team 10
7/29/2021 2022
Acres from IR
North American 1983 Datum, Lat/Long Grid

