

# AIR OPERATIONS

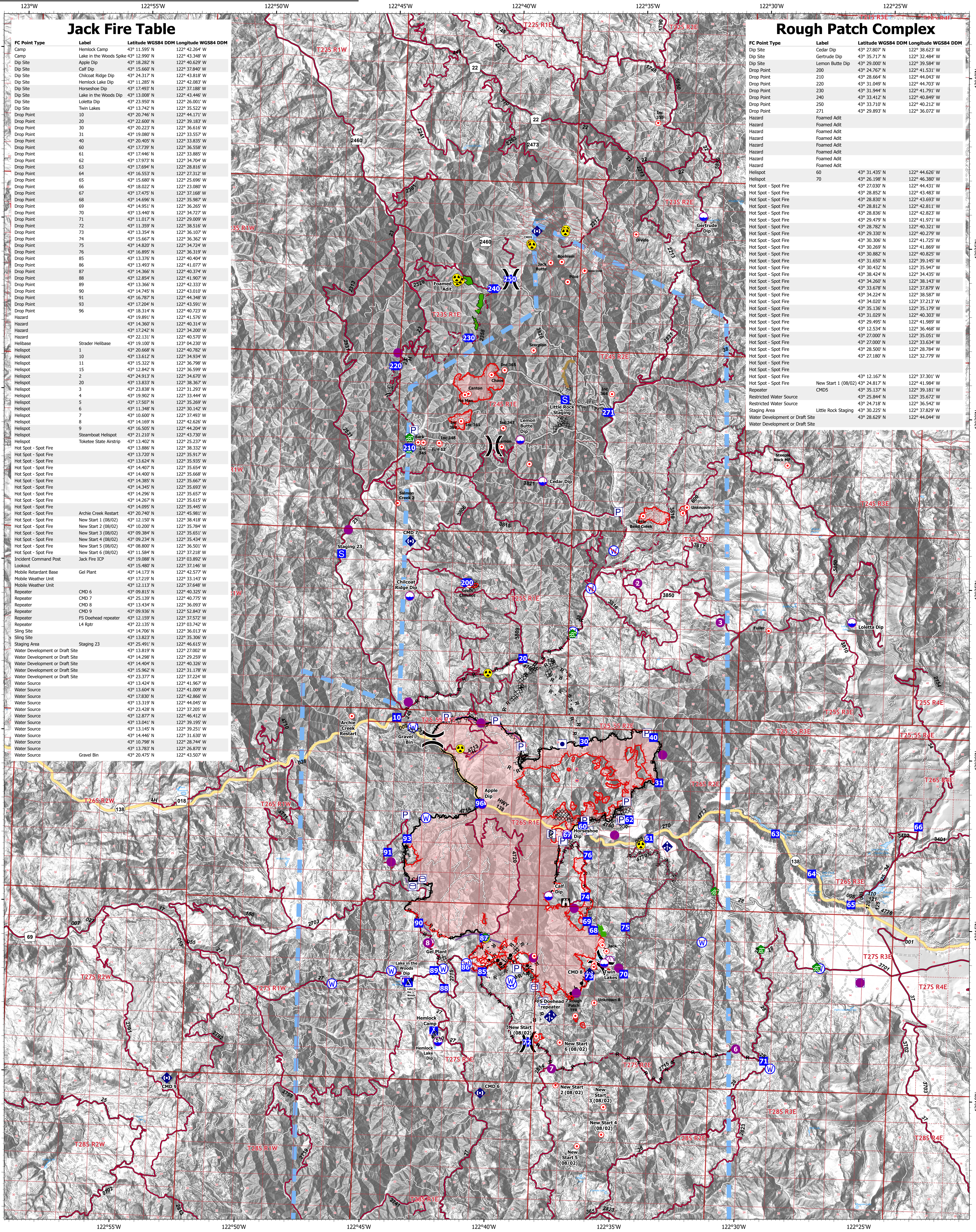
# JACK FIRE ROUGH PATCH CX

23,454 acres on 08/04/2021 @ 2245

1,183 acres on 08/04/2021 @ 2300



JACK FIRE OR-UPF-000265 ROUGH PATCH CX OR-UPF-000373 08/16/2021 - 24HR

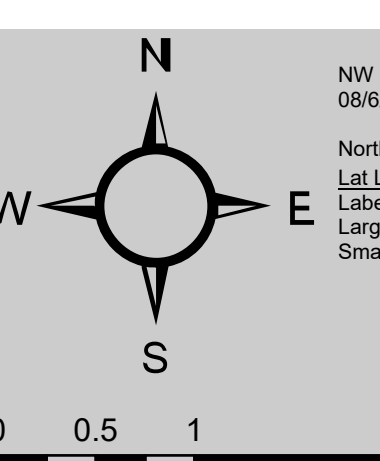


### Jack Fire Table

FC Point Type	Label	Latitude WGS84 DDM	Longitude WGS84 DDM
Camp	Hemlock Camp	43° 11.595' N	122° 42.264' W
Camp	Lake in the Woods Spike	43° 12.990' N	122° 43.348' W
Dip Site	Apple Dip	43° 18.282' N	122° 40.629' W
Dip Site	Call Dip	43° 19.660' N	122° 37.840' W
Dip Site	Chilcoot Ridge Dip	43° 24.317' N	122° 43.818' W
Dip Site	Hemlock Lake Dip	43° 11.285' N	122° 42.083' W
Dip Site	Horseshoe Dip	43° 17.493' N	122° 37.188' W
Dip Site	Lake in the Woods Dip	43° 13.008' N	122° 43.446' W
Dip Site	Loretta Dip	43° 23.950' N	122° 26.001' W
Dip Site	Twin Lakes	43° 13.742' N	122° 35.522' W
Drop Point	10	43° 20.746' N	122° 44.171' W
Drop Point	20	43° 22.600' N	122° 39.183' W
Drop Point	30	43° 20.223' N	122° 36.616' W
Drop Point	31	43° 19.080' N	122° 33.557' W
Drop Point	40	43° 20.405' N	122° 33.835' W
Drop Point	60	43° 17.739' N	122° 36.558' W
Drop Point	61	43° 14.468' N	122° 35.885' W
Drop Point	62	43° 17.973' N	122° 34.704' W
Drop Point	63	43° 17.694' N	122° 28.816' W
Drop Point	64	43° 16.553' N	122° 27.312' W
Drop Point	65	43° 15.680' N	122° 25.696' W
Drop Point	66	43° 18.022' N	122° 23.080' W
Drop Point	67	43° 17.475' N	122° 37.108' W
Drop Point	68	43° 14.698' N	122° 36.362' W
Drop Point	69	43° 14.951' N	122° 36.265' W
Drop Point	70	43° 13.440' N	122° 34.727' W
Drop Point	71	43° 11.017' N	122° 29.009' W
Drop Point	72	43° 11.359' N	122° 38.516' W
Drop Point	73	43° 13.354' N	122° 36.107' W
Drop Point	74	43° 15.667' N	122° 36.362' W
Drop Point	75	43° 14.820' N	122° 34.724' W
Drop Point	76	43° 16.895' N	122° 36.319' W
Drop Point	85	43° 13.376' N	122° 40.404' W
Drop Point	86	43° 13.493' N	122° 41.077' W
Drop Point	87	43° 14.366' N	122° 40.374' W
Drop Point	88	43° 12.854' N	122° 41.907' W
Drop Point	89	43° 13.366' N	122° 36.362' W
Drop Point	90	43° 14.745' N	122° 43.010' W
Drop Point	91	43° 16.787' N	122° 44.348' W
Drop Point	93	43° 17.204' N	122° 43.591' W
Drop Point	96	43° 18.314' N	122° 40.723' W
Hazard		43° 19.891' N	122° 41.576' W
Hazard		43° 14.360' N	122° 40.314' W
Hazard		43° 12.242' N	122° 34.200' W
Hazard		43° 22.131' N	122° 40.570' W
Helibase	Strader Helibase	43° 19.100' N	123° 04.230' W
Helispot	1	43° 20.668' N	122° 40.782' W
Helispot	10	43° 13.612' N	122° 34.934' W
Helispot	11	43° 15.322' N	122° 36.798' W
Helispot	15	43° 12.840' N	122° 36.599' W
Helispot	2	43° 24.919' N	122° 34.570' W
Helispot	20	43° 13.833' N	122° 38.367' W
Helispot	3	43° 23.838' N	122° 31.293' W
Helispot	4	43° 19.902' N	122° 33.444' W
Helispot	5	43° 17.507' N	122° 35.269' W
Helispot	6	43° 11.348' N	122° 30.142' W
Helispot	7	43° 16.600' N	122° 37.493' W
Helispot	8	43° 14.169' N	122° 42.626' W
Helispot	9	43° 16.505' N	122° 44.204' W
Helispot	Steamboat Helispot	43° 21.210' N	122° 43.730' W
Helispot	Toketee State Airstrip	43° 13.402' N	122° 35.237' W
Hot Spot - Spot Fire		43° 13.886' N	122° 38.332' W
Hot Spot - Spot Fire		43° 13.720' N	122° 35.917' W
Hot Spot - Spot Fire		43° 13.624' N	122° 35.935' W
Hot Spot - Spot Fire		43° 14.407' N	122° 35.654' W
Hot Spot - Spot Fire		43° 14.400' N	122° 35.668' W
Hot Spot - Spot Fire		43° 14.385' N	122° 35.667' W
Hot Spot - Spot Fire		43° 14.345' N	122° 35.693' W
Hot Spot - Spot Fire		43° 14.296' N	122° 35.657' W
Hot Spot - Spot Fire		43° 14.267' N	122° 35.615' W
Hot Spot - Spot Fire		43° 14.095' N	122° 34.545' W
Hot Spot - Spot Fire		43° 20.740' N	122° 45.981' W
Hot Spot - Spot Fire	New Start 1 (08/02)	43° 12.150' N	122° 38.418' W
Hot Spot - Spot Fire	New Start 2 (08/02)	43° 10.200' N	122° 35.784' W
Hot Spot - Spot Fire	New Start 3 (08/02)	43° 09.384' N	122° 35.651' W
Hot Spot - Spot Fire	New Start 4 (08/02)	43° 09.234' N	122° 35.434' W
Hot Spot - Spot Fire	New Start 5 (08/02)	43° 08.800' N	122° 36.501' W
Hot Spot - Spot Fire	New Start 6 (08/02)	43° 11.584' N	122° 37.218' W
Incident Command Post	Jack Fire ICP	43° 19.088' N	123° 03.892' W
Lookout		43° 15.480' N	122° 37.146' W
Mobile Retardant Base	Gel Plant	43° 14.173' N	122° 42.577' W
Mobile Weather Unit		43° 17.219' N	122° 33.143' W
Mobile Weather Unit		43° 12.113' N	122° 37.648' W
Repeater	CMD 6	43° 09.815' N	122° 40.225' W
Repeater	CMD 7	43° 25.139' N	122° 40.775' W
Repeater	CMD 8	43° 13.434' N	122° 36.093' W
Repeater	CMD 9	43° 09.936' N	122° 52.843' W
Repeater	FS Doehead repeater	43° 12.159' N	122° 37.572' W
Repeater	L4 Rptr	43° 22.135' N	122° 03.742' W
Sling Site		43° 14.706' N	122° 36.813' W
Sling Site		43° 13.823' N	122° 35.306' W
Staging Area	Staging 23	43° 25.491' N	122° 46.615' W
Water Development or Draft Site		43° 13.819' N	122° 27.002' W
Water Development or Draft Site		43° 14.298' N	122° 29.259' W
Water Development or Draft Site		43° 14.404' N	122° 40.326' W
Water Development or Draft Site		43° 15.962' N	122° 31.178' W
Water Development or Draft Site		43° 23.377' N	122° 37.224' W
Water Development or Draft Site		43° 13.424' N	122° 41.967' W
Water Source		43° 13.604' N	122° 41.009' W
Water Source		43° 17.830' N	122° 42.866' W
Water Source		43° 13.319' N	122° 44.045' W
Water Source		43° 23.428' N	122° 37.205' W
Water Source		43° 12.877' N	122° 46.412' W
Water Source		43° 13.941' N	122° 39.195' W
Water Source		43° 13.145' N	122° 39.251' W
Water Source		43° 14.446' N	122° 31.630' W
Water Source		43° 10.798' N	122° 28.744' W
Water Source		43° 13.783' N	122° 26.870' W
Water Source	Gravel Bin	43° 20.475' N	122° 43.507' W

### Rough Patch Complex

FC Point Type	Label	Latitude WGS84 DDM	Longitude WGS84 DDM
Dip Site	Cedar Dip	43° 27.807' N	122° 38.623' W
Dip Site	Gertrude Dip	43° 35.717' N	122° 32.484' W
Dip Site	Lemon Butte Dip	43° 29.000' N	122° 39.584' W
Drop Point	200	43° 24.767' N	122° 41.531' W
Drop Point	210	43° 28.664' N	122° 44.043' W
Drop Point	220	43° 31.049' N	122° 44.703' W
Drop Point	230	43° 31.944' N	122° 41.791' W
Drop Point	240	43° 33.412' N	122° 40.849' W
Drop Point	250	43° 33.710' N	122° 40.212' W
Drop Point	271	43° 29.893' N	122° 36.072' W
Hazard	Foamed Adit		
Hazard	Foamed Adit		
Hazard	Foamed Adit		
Hazard	Foamed Adit		
Hazard	Foamed Adit		
Hazard	Foamed Adit		
Hazard	Foamed Adit		
Helispot	60	43° 31.435' N	122° 44.626' W
Helispot	70	43° 26.198' N	122° 46.380' W
Hot Spot - Spot Fire		43° 27.030' N	122° 44.431' W
Hot Spot - Spot Fire		43° 28.852' N	122° 42.463' W
Hot Spot - Spot Fire		43° 28.830' N	122° 43.693' W
Hot Spot - Spot Fire		43° 28.812' N	122° 42.811' W
Hot Spot - Spot Fire		43° 28.836' N	122° 42.823' W
Hot Spot - Spot Fire		43° 29.479' N	122° 41.971' W
Hot Spot - Spot Fire		43° 28.782' N	122° 40.321' W
Hot Spot - Spot Fire		43° 29.330' N	122° 40.279' W
Hot Spot - Spot Fire		43° 30.306' N	122° 41.725' W
Hot Spot - Spot Fire		43° 30.269' N	122° 41.869' W
Hot Spot - Spot Fire		43° 30.882' N	122° 40.625' W
Hot Spot - Spot Fire		43° 31.650' N	122° 39.145' W
Hot Spot - Spot Fire		43° 30.432' N	122° 35.947' W
Hot Spot - Spot Fire		43° 38.424' N	122° 34.435' W
Hot Spot - Spot Fire		43° 34.260' N	122° 38.143' W
Hot Spot - Spot Fire		43° 33.678' N	122° 37.879' W
Hot Spot - Spot Fire		43° 34.224' N	122° 38.587' W
Hot Spot - Spot Fire		43° 34.020' N	122° 37.213' W
Hot Spot - Spot Fire		43° 35.136' N	122° 35.179' W
Hot Spot - Spot Fire		43° 31.629' N	122° 40.383' W
Hot Spot - Spot Fire		43° 29.495' N	122° 41.989' W
Hot Spot - Spot Fire		43° 12.534' N	122° 36.468' W
Hot Spot - Spot Fire		43° 27.000' N	122° 35.051' W
Hot Spot - Spot Fire		43° 27.000' N	122° 33.634' W
Hot Spot - Spot Fire		43° 28.500' N	122° 28.784' W
Hot Spot - Spot Fire		43° 27.180' N	122° 32.779' W
Hot Spot - Spot Fire		43° 12.167' N	122° 37.301' W
Hot Spot - Spot Fire		43° 24.817' N	122° 41.994' W
Repeater	CMD5	43° 35.137' N	122° 39.181' W
Restricted Water Source		43° 25.844' N	122° 35.672' W
Restricted Water Source		43° 24.718' N	122° 36.542' W
Staging Area	Little Rock Staging	43° 30.225' N	122° 37.829' W
Water Development or Draft Site		43° 28.629' N	122° 44.044' W
Water Development or Draft Site			



- Wildfire Daily Fire Perimeter
- Dip Site
- Mobile Retardant Base
- Helispot
- Sling Site
- Division Break
- Drop Point
- Camp
- Staging Area
- Lookout
- Hot Spot - Spot Fire
- Water Development or Draft Site
- Mobile Weather Unit
- Repeater
- Hazard
- Water Source
- Restricted Water Source
- Completed Burnout
- Completed Dozer Line
- Completed Hand Line
- Planned Fuel Break
- Planned Hand Line
- Planned Mixed Construction Line
- Completed Road as Line
- Access or Improved Road
- Other
- Repair Line
- Escaped Route
- Planned Road as Line
- Foam Drop
- Retardant Drop
- Temporary Flight Restriction
- Fire Edge
- Contained Line
- Other Property
- Pump
- Water Tank
- Helicopter Logging
- Primary Hwy
- ARTERIAL
- Paved Road
- Gravel Road
- Dirt Roads
- Unimproved Roads
- Lake / Pond
- Reservoir

