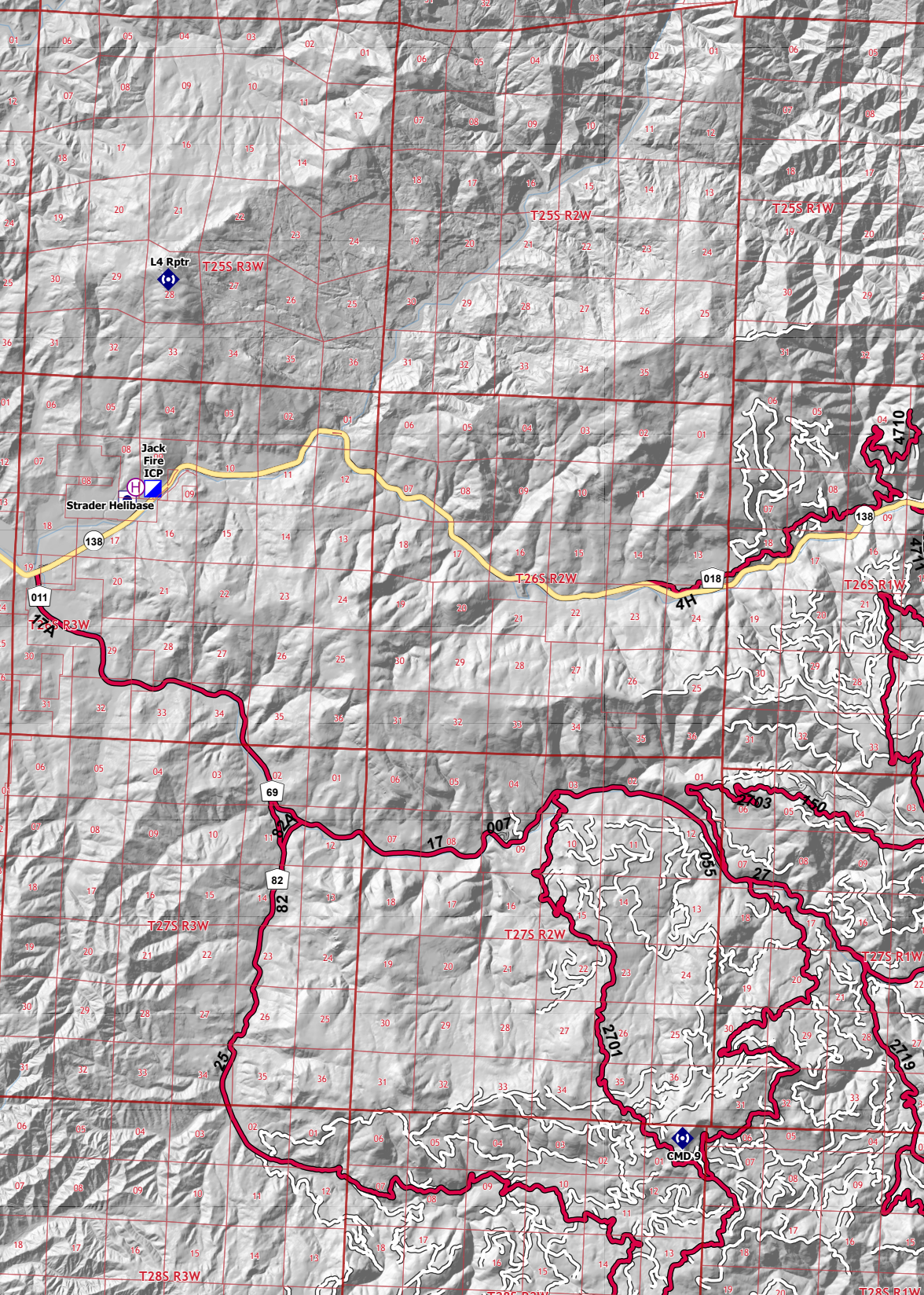
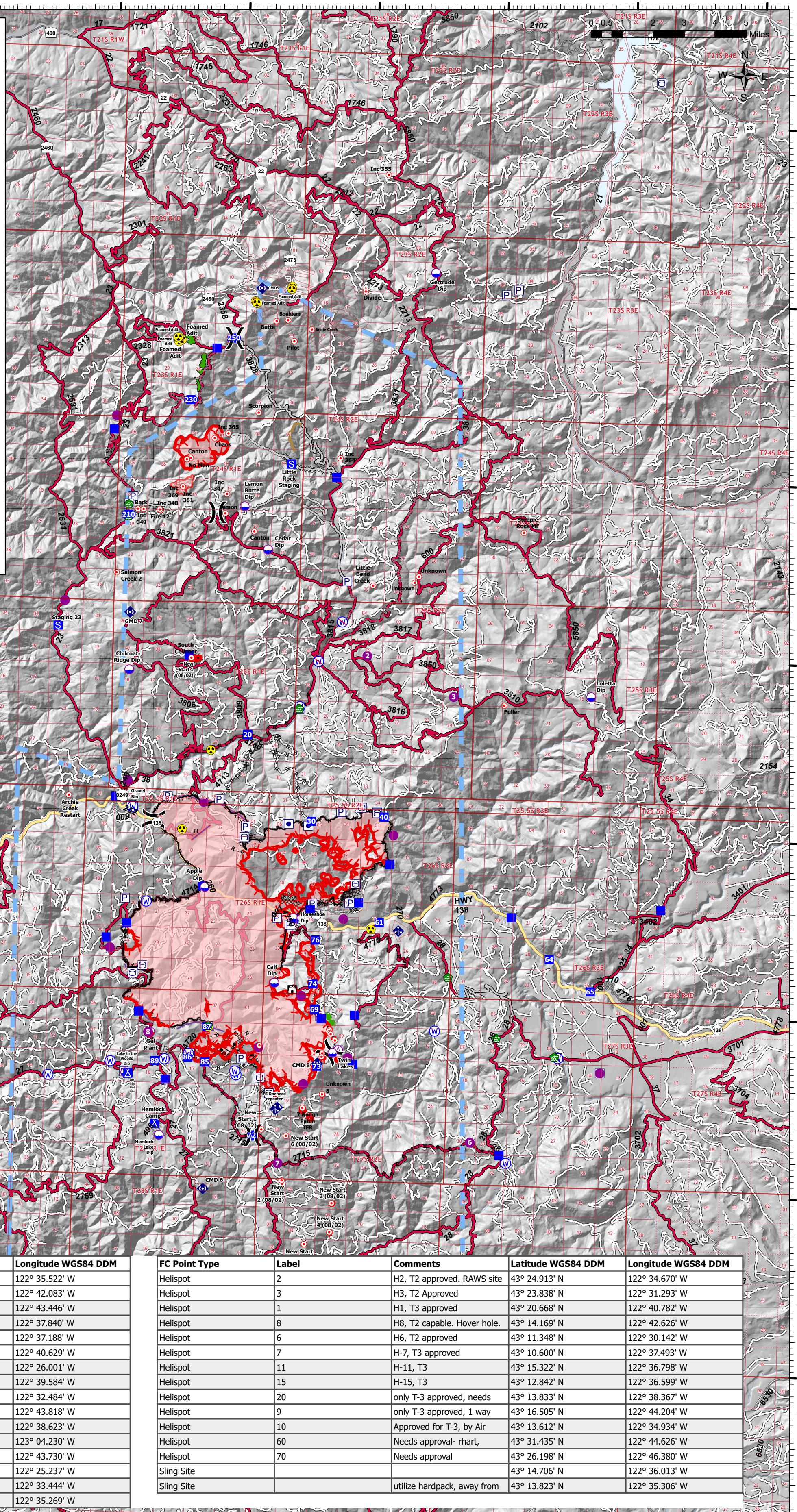


Incident Name	Latitude WGS84 DDM	Longitude WGS84 DDM
7 Rough Patch TFR (Rough Patch Complex)	43° 12.167' N	122° 37.301' W
Annie Creek (Rough Patch Complex)	43° 34.020' N	122° 37.213' W
Bark (Rough Patch Complex)	43° 28.830' N	122° 43.693' W
Boehiem (Rough Patch Complex)	43° 34.260' N	122° 38.143' W
Canton (Rough Patch Complex)	43° 30.306' N	122° 41.725' W
Canton (Rough Patch Complex)	43° 30.882' N	122° 40.825' W
Chaos (Rough Patch Complex)	43° 35.136' N	122° 35.179' W
Divide (Rough Patch Complex)	43° 28.812' N	122° 42.811' W
Fuller (Rough Patch Complex)	43° 29.330' N	122° 40.279' W
Inc 347 (Rough Patch Complex)	43° 28.836' N	122° 42.823' W
Inc 349 (Rough Patch Complex)	43° 28.852' N	122° 43.483' W
Inc 355 (Rough Patch Complex)	43° 38.424' N	122° 34.435' W
Inc 361 (Rough Patch Complex)	43° 29.479' N	122° 41.971' W
Inc 364 (Rough Patch Complex)	43° 30.432' N	122° 35.947' W
Inc 365 (Rough Patch Complex)	43° 31.029' N	122° 40.303' W
Inc 369 (Rough Patch Complex)	43° 29.495' N	122° 41.989' W
Jack Butte (Rough Patch Complex)	43° 34.224' N	122° 38.587' W
Lemon (Rough Patch Complex)	43° 28.782' N	122° 40.321' W
Little Bend Creek (Rough Patch Complex)	43° 27.000' N	122° 35.051' W
No Man (Rough Patch Complex)	43° 30.269' N	122° 41.869' W
Pilot (Rough Patch Complex)	43° 33.678' N	122° 37.879' W
Salmon Creek 2 (Rough Patch Complex)	43° 27.030' N	122° 44.431' W
Scorpion (Rough Patch Complex)	43° 31.650' N	122° 39.145' W
South Chilcoot (Rough Patch Complex)	43° 24.817' N	122° 41.984' W
Steeple Rock MF (Rough Patch Complex)	43° 28.500' N	122° 28.784' W
Unknown (Rough Patch Complex)	43° 27.000' N	122° 33.634' W
Unknown (Rough Patch Complex)	43° 27.180' N	122° 32.779' W
Unknown 8 (Rough Patch Complex)	43° 12.534' N	122° 36.468' W



FC Point Type	Label	Comments	Latitude WGS84 DDM	Longitude WGS84 DDM
Dip Site	Twin Lakes	Twin Lakes, approved	43° 13.742' N	122° 35.522' W
Dip Site	Hemlock Lake Dip	Hemlock Lake, approved	43° 11.285' N	122° 42.083' W
Dip Site	Lake in the Woods Dip	Lake in the Woods, approved	43° 13.008' N	122° 43.446' W
Dip Site	Calf Dip		43° 15.660' N	122° 37.840' W
Dip Site	Horseshoe Dip	Calf Dip	43° 17.493' N	122° 37.188' W
Dip Site	Apple Dip	Apple Dip	43° 18.282' N	122° 40.629' W
Dip Site	Loletta Dip		43° 23.950' N	122° 26.001' W
Dip Site	Lemon Butte Dip		43° 29.000' N	122° 39.584' W
Dip Site	Gertrude Dip		43° 35.717' N	122° 32.484' W
Dip Site	Chilcoot Ridge Dip	No Tank	43° 24.317' N	122° 43.818' W
Dip Site	Cedar Dip		43° 27.807' N	122° 38.623' W
Helibase	Strader Helibase		43° 19.100' N	123° 04.230' W
Helispot	Steamboat Helispot	T1, T2, T3 approved	43° 21.210' N	122° 43.730' W
Helispot	Toketee State Airstrip	T1, T2, T3 approved	43° 13.402' N	122° 25.237' W
Helispot	4	T2, T3, Dust Abatement	43° 19.902' N	122° 33.444' W
Helispot	5	T1, T2, T3 - Private Grass	43° 17.507' N	122° 35.269' W

FC Point Type	Label	Comments	Latitude WGS84 DDM	Longitude WGS84 DDM
Helispot	2	H2, T2 approved. RAWs site	43° 24.913' N	122° 34.670' W
Helispot	3	H3, T2 Approved	43° 23.838' N	122° 31.293' W
Helispot	1	H1, T3 approved	43° 20.668' N	122° 40.782' W
Helispot	8	H8, T2 capable. Hover hole.	43° 14.169' N	122° 42.626' W
Helispot	6	H6, T2 approved	43° 11.348' N	122° 30.142' W
Helispot	7	H-7, T3 approved	43° 10.600' N	122° 37.493' W
Helispot	11	H-11, T3	43° 15.322' N	122° 36.798' W
Helispot	15	H-15, T3	43° 12.842' N	122° 36.599' W
Helispot	20	only T-3 approved, needs	43° 14.169' N	122° 38.367' W
Helispot	9	only T-3 approved, 1 way	43° 16.505' N	122° 44.204' W
Helispot	10	Approved for T-3, by Air	43° 13.612' N	122° 34.934' W
Helispot	60	Needs approval - rhart,	43° 31.435' N	122° 44.626' W
Helispot	70	Needs approval	43° 26.198' N	122° 46.380' W
Sling Site			43° 14.706' N	122° 36.013' W
Sling Site		utilize hardpack, away from	43° 13.823' N	122° 35.306' W



Pilots Map

North American 1983 Datum. LatLong Grid
 Lat Long Grid:
 Label Tick 5m, Large Tick 1m, Small Tick 10s

Jack Fire
 OR-UPF-000265
 23,454 acres at 08/04/2021 @ 2245

Rough Patch Complex
 OR-UPF-000373
 1,183 acres at 08/04/2021 @ 2300

<ul style="list-style-type: none"> Dip Site Mobile Retardant Base Helispot Helibase Sling Site Division Break Incident Command Post Drop Point Camp 	<ul style="list-style-type: none"> Staging Area Lookout Hot Spot - Spot Fire Water Development or Draft Site Mobile Weather Unit Repeater Hazard Water Source Restricted Water Source 	<ul style="list-style-type: none"> Completed Burnout Completed Dozer Line Completed Hand Line Completed Road as Line Planned Dozer Line Planned Hand Line Planned Mixed Construction Line Planned Road as Line Access or Improved Road 	<ul style="list-style-type: none"> Other Repair Line Escape Route Foam Drop Retardant Drop Temporary Flight Restriction Fire Edge Contained Line Wildfire Daily Fire Perimeter 	<ul style="list-style-type: none"> Helicopter Logging Primary Highway Paved Roads Dirt (Not Paved) Primary Hwy ARTERIAL L - LOCAL
--	--	---	---	--

