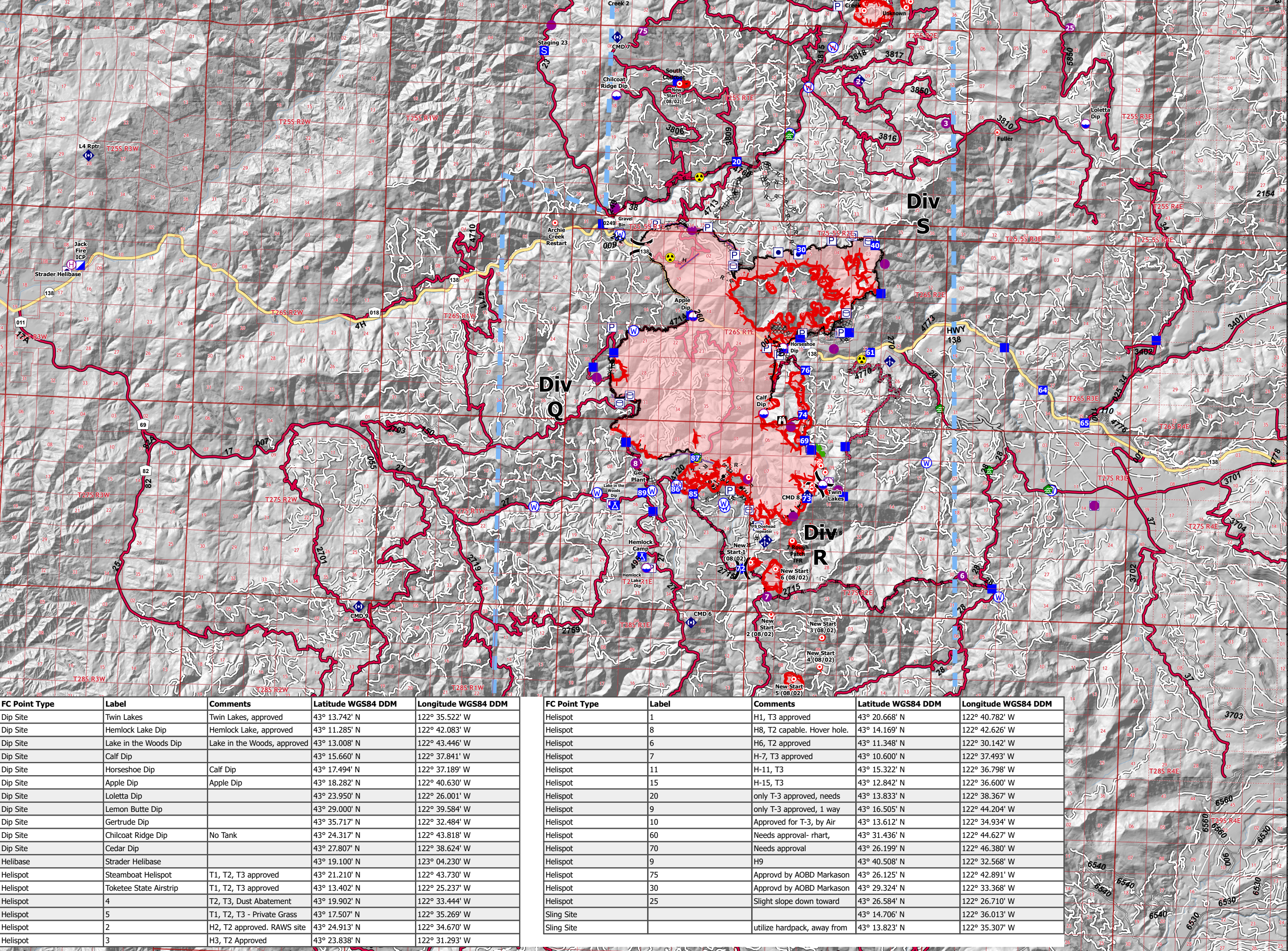


Incident Name	Latitude WGS84 DDM	Longitude WGS84 DDM
7 Rough Patch TFR (Rough Patch Complex)	43° 12.173' N	122° 36.610' W
Annie Creek (Rough Patch Complex)	43° 34.020' N	122° 37.213' W
Bark (Rough Patch Complex)	43° 28.830' N	122° 43.693' W
Boehiem (Rough Patch Complex)	43° 34.260' N	122° 38.143' W
Canton (Rough Patch Complex)	43° 30.306' N	122° 41.725' W
Canton (Rough Patch Complex)	43° 28.305' N	122° 39.182' W
Chaos (Rough Patch Complex)	43° 30.882' N	122° 40.825' W
Divide (Rough Patch Complex)	43° 35.136' N	122° 35.179' W
Fire 12 (Rough Patch Complex)	43° 28.812' N	122° 42.811' W
Fuller (Rough Patch Complex)	43° 23.637' N	122° 29.341' W
Inc 347 (Rough Patch Complex)	43° 29.330' N	122° 40.279' W
Inc 348 (Rough Patch Complex)	43° 28.831' N	122° 42.847' W
Inc 349 (Rough Patch Complex)	43° 28.829' N	122° 43.476' W
Inc 355 (Rough Patch Complex)	43° 38.424' N	122° 34.435' W
Inc 361 (Rough Patch Complex)	43° 29.479' N	122° 41.971' W
Inc 364 (Rough Patch Complex)	43° 30.432' N	122° 35.947' W
Inc 365 (Rough Patch Complex)	43° 31.029' N	122° 40.303' W
Inc 369 (Rough Patch Complex)	43° 29.495' N	122° 41.989' W
Jack Butte (Rough Patch Complex)	43° 34.224' N	122° 38.587' W
Lemon (Rough Patch Complex)	43° 28.782' N	122° 40.321' W
Little Bend Creek (Rough Patch Complex)	43° 26.887' N	122° 34.534' W
No Man (Rough Patch Complex)	43° 30.269' N	122° 41.869' W
Pilot (Rough Patch Complex)	43° 33.678' N	122° 37.879' W
Salmon Creek 2 (Rough Patch Complex)	43° 27.030' N	122° 44.431' W
Scorpion (Rough Patch Complex)	43° 31.639' N	122° 39.162' W
South Chilcoot (Rough Patch Complex)	43° 24.702' N	122° 41.442' W
Steeple Rock MF (Rough Patch Complex)	43° 28.500' N	122° 28.784' W
Unknown (Rough Patch Complex)	43° 27.008' N	122° 32.939' W
Unknown (Rough Patch Complex)	43° 27.180' N	122° 32.779' W
Unknown 8 (Rough Patch Complex)	43° 12.571' N	122° 35.870' W



FC Point Type	Label	Comments	Latitude WGS84 DDM	Longitude WGS84 DDM
Dip Site	Twin Lakes	Twin Lakes, approved	43° 13.742' N	122° 35.522' W
Dip Site	Hemlock Lake Dip	Hemlock Lake, approved	43° 11.285' N	122° 42.083' W
Dip Site	Lake in the Woods Dip	Lake in the Woods, approved	43° 13.008' N	122° 43.446' W
Dip Site	Calf Dip		43° 15.660' N	122° 37.841' W
Dip Site	Horseshoe Dip	Calf Dip	43° 17.494' N	122° 37.189' W
Dip Site	Apple Dip	Apple Dip	43° 18.282' N	122° 40.630' W
Dip Site	Loletta Dip		43° 23.950' N	122° 26.001' W
Dip Site	Lemon Butte Dip		43° 29.000' N	122° 39.584' W
Dip Site	Gertrude Dip		43° 35.717' N	122° 32.484' W
Dip Site	Chilcoat Ridge Dip	No Tank	43° 24.317' N	122° 43.818' W
Dip Site	Cedar Dip		43° 27.807' N	122° 38.624' W
Helibase	Strader Helibase		43° 19.100' N	123° 04.230' W
Helispot	Steamboat Helispot	T1, T2, T3 approved	43° 21.210' N	122° 43.730' W
Helispot	Toketee State Airstrip	T1, T2, T3 approved	43° 13.402' N	122° 25.237' W
Helispot	4	T2, T3, Dust Abatement	43° 19.902' N	122° 33.444' W
Helispot	5	T1, T2, T3 - Private Grass	43° 17.507' N	122° 35.269' W
Helispot	2	H2, T2 approved. RAWFS site	43° 24.913' N	122° 34.670' W
Helispot	3	H3, T2 Approved	43° 23.838' N	122° 31.293' W

FC Point Type	Label	Comments	Latitude WGS84 DDM	Longitude WGS84 DDM
Helispot	1	H1, T3 approved	43° 20.668' N	122° 40.782' W
Helispot	8	H8, T2 capable. Hover hole.	43° 14.169' N	122° 42.626' W
Helispot	6	H6, T2 approved	43° 11.348' N	122° 30.142' W
Helispot	7	H-7, T3 approved	43° 10.600' N	122° 37.493' W
Helispot	11	H-11, T3	43° 15.322' N	122° 36.798' W
Helispot	15	H-15, T3	43° 12.842' N	122° 36.600' W
Helispot	20	only T-3 approved, needs	43° 13.833' N	122° 38.367' W
Helispot	9	only T-3 approved, 1 way	43° 16.505' N	122° 44.204' W
Helispot	10	Approved for T-3, by Air	43° 13.612' N	122° 34.934' W
Helispot	60	Needs approval- rhart,	43° 31.436' N	122° 44.627' W
Helispot	70	Needs approval	43° 26.199' N	122° 46.380' W
Helispot	9	H9	43° 40.508' N	122° 32.568' W
Helispot	75	Approved by AOB Markason	43° 26.125' N	122° 42.891' W
Helispot	30	Approved by AOB Markason	43° 29.324' N	122° 33.368' W
Helispot	25	Slight slope down toward	43° 26.584' N	122° 26.710' W
Sling Site			43° 14.706' N	122° 36.013' W
Sling Site		utilize hardpack, away from	43° 13.823' N	122° 35.307' W

Pilots Map
NW IMT 13 - CH
08/7/2021 - 24hr

North American 1983 Datum. LatLong Grid

Lat Long Grid:
Label Tick 5m, Large Tick 1m, Small Tick 10s

Jack Fire
OR-UPF-000265
23,644 acres at 08/05/2021 @ 2230

Rough Patch Complex
OR-UPF-000373
1,529 acres at 08/05/2021 @ 2230

<ul style="list-style-type: none"> ● Dip Site ● Mobile Retardant Base ● Helispot ● Helibase ● Sling Site) Division Break) Incident Command Post) Drop Point) Camp 	<ul style="list-style-type: none"> ■ Staging Area ■ Lookout ● Hot Spot - Spot Fire ● Water Development or Draft Site ● Mobile Weather Unit ● Repeater ● Hazard ● Water Source ● Restricted Water Source 	<ul style="list-style-type: none"> ■ Completed Burnout ■ Completed Dozer Line ■ Completed Hand Line ■ Completed Road as Line ■ Planned Dozer Line ■ Planned Fuel Break ■ Planned Hand Line ■ Planned Mixed Construction Line ■ Planned Road as Line 	<ul style="list-style-type: none"> — Access or Improved Road — Other — Repair Line — Escape Route — Completed Road as Line — Planned Road as Line — Retardant Drop — Temporary Flight Restriction — Fire Edge — Contained Line 	<ul style="list-style-type: none"> ■ Wildfire Daily Fire Perimeter ■ Helicopter Logging — Primary Highway — Paved Roads — Dirt (Not Paved) — Primary Hwy — ARTERIAL — L - LOCAL
---	--	--	---	--