

# AIR OPERATIONS

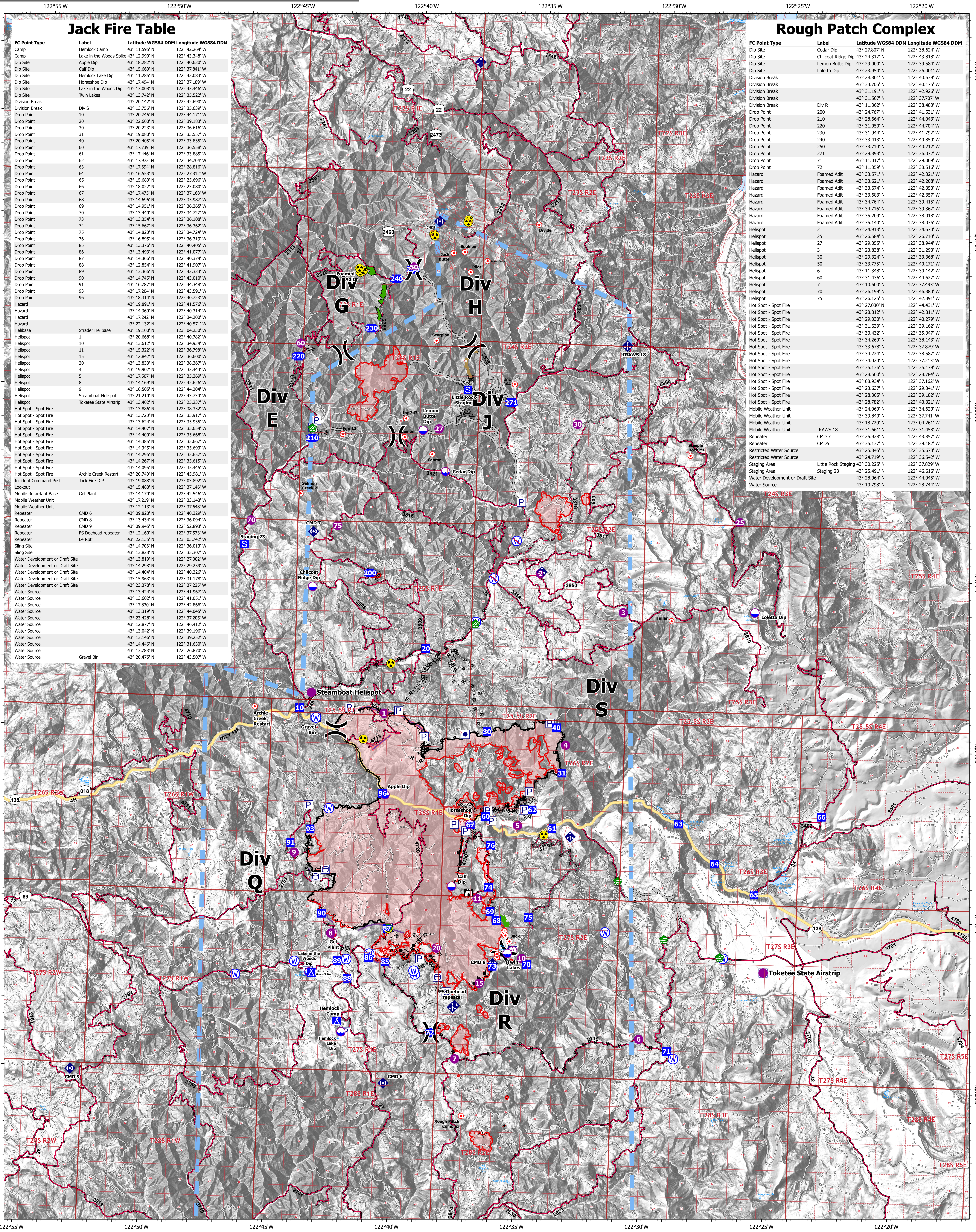
# JACK FIRE ROUGH PATCH CX

23,290 acres at 08/06/2021 @ 2255

2,419 acres at 08/06/2021 @ 2255



JACK FIRE OR-UPF-000265 ROUGH PATCH CX OR-UPF-000373 08/18/2021 - 24HR



## Jack Fire Table

FC Point Type	Label	Latitude WGS84 DDM	Longitude WGS84 DDM
Camp	Hemlock Camp	43° 11.595' N	122° 42.264' W
Camp	Lake in the Woods Spike	43° 12.990' N	122° 43.348' W
Dip Site	Apple Dip	43° 18.282' N	122° 40.630' W
Dip Site	Call Dip	43° 15.660' N	122° 37.941' W
Dip Site	Hemlock Lake Dip	43° 11.285' N	122° 42.083' W
Dip Site	Horseshoe Dip	43° 17.494' N	122° 37.189' W
Dip Site	Lake in the Woods Dip	43° 13.008' N	122° 43.446' W
Dip Site	Twin Lakes	43° 13.742' N	122° 35.522' W
Division Break		43° 20.142' N	122° 42.690' W
Division Break	Div S	43° 13.756' N	122° 35.639' W
Drop Point	10	43° 20.746' N	122° 44.171' W
Drop Point	20	43° 22.600' N	122° 39.183' W
Drop Point	30	43° 20.223' N	122° 36.616' W
Drop Point	31	43° 19.080' N	122° 33.557' W
Drop Point	40	43° 20.405' N	122° 33.835' W
Drop Point	60	43° 17.739' N	122° 36.558' W
Drop Point	61	43° 17.446' N	122° 33.885' W
Drop Point	62	43° 17.973' N	122° 34.704' W
Drop Point	63	43° 17.694' N	122° 28.816' W
Drop Point	64	43° 16.553' N	122° 27.312' W
Drop Point	65	43° 15.680' N	122° 25.696' W
Drop Point	66	43° 18.022' N	122° 23.080' W
Drop Point	67	43° 17.475' N	122° 37.168' W
Drop Point	68	43° 16.696' N	122° 35.987' W
Drop Point	69	43° 14.951' N	122° 36.265' W
Drop Point	70	43° 13.440' N	122° 34.727' W
Drop Point	73	43° 13.354' N	122° 36.108' W
Drop Point	74	43° 15.667' N	122° 36.362' W
Drop Point	75	43° 14.820' N	122° 34.724' W
Drop Point	76	43° 16.895' N	122° 36.319' W
Drop Point	85	43° 13.376' N	122° 40.459' W
Drop Point	86	43° 13.493' N	122° 41.077' W
Drop Point	87	43° 14.366' N	122° 40.374' W
Drop Point	88	43° 12.854' N	122° 41.907' W
Drop Point	89	43° 13.366' N	122° 42.333' W
Drop Point	90	43° 14.742' N	122° 43.010' W
Drop Point	91	43° 16.787' N	122° 34.949' W
Drop Point	93	43° 17.204' N	122° 43.591' W
Drop Point	96	43° 18.314' N	122° 40.723' W
Hazard	8991	43° 19.891' N	122° 41.576' W
Hazard	8992	43° 14.360' N	122° 40.314' W
Hazard	8993	43° 17.242' N	122° 34.200' W
Hazard	8994	43° 22.132' N	122° 40.571' W
Helibase	Strader Helibase	43° 19.100' N	122° 40.230' W
Helispot	1	43° 20.668' N	122° 40.782' W
Helispot	10	43° 13.612' N	122° 34.934' W
Helispot	11	43° 15.322' N	122° 36.798' W
Helispot	15	43° 12.842' N	122° 36.600' W
Helispot	20	43° 13.833' N	122° 38.367' W
Helispot	4	43° 19.300' N	122° 33.444' W
Helispot	5	43° 13.507' N	122° 35.369' W
Helispot	8	43° 14.169' N	122° 42.626' W
Helispot	9	43° 16.505' N	122° 44.204' W
Helispot	Steamboat Helispot	43° 21.210' N	122° 43.730' W
Helispot	Toketee State Airstrip	43° 13.402' N	122° 25.237' W
Hot Spot - Spot Fire		43° 13.886' N	122° 38.332' W
Hot Spot - Spot Fire		43° 13.720' N	122° 35.917' W
Hot Spot - Spot Fire		43° 13.624' N	122° 35.925' W
Hot Spot - Spot Fire		43° 14.407' N	122° 35.654' W
Hot Spot - Spot Fire		43° 14.400' N	122° 35.668' W
Hot Spot - Spot Fire		43° 14.385' N	122° 35.667' W
Hot Spot - Spot Fire		43° 14.345' N	122° 35.693' W
Hot Spot - Spot Fire		43° 14.296' N	122° 35.657' W
Hot Spot - Spot Fire		43° 14.267' N	122° 35.615' W
Hot Spot - Spot Fire		43° 14.095' N	122° 35.445' W
Hot Spot - Spot Fire		43° 20.740' N	122° 45.981' W
Incident Command Post	Jack Fire ICP	43° 19.088' N	122° 43.892' W
Lookout		43° 15.480' N	122° 37.146' W
Mobile Retardant Base	Gel Plant	43° 14.170' N	122° 42.546' W
Mobile Weather Unit		43° 12.219' N	122° 33.143' W
Mobile Weather Unit		43° 12.113' N	122° 37.548' W
Repeater	CMD 6	43° 09.820' N	122° 40.329' W
Repeater	CMD 8	43° 13.434' N	122° 36.094' W
Repeater	CMD 9	43° 09.945' N	122° 52.893' W
Repeater	FS Doehhead repeater	43° 12.160' N	122° 37.573' W
Repeater	L4 Rptr	43° 22.135' N	122° 03.742' W
Sling Site		43° 14.780' N	122° 36.013' W
Sling Site		43° 13.823' N	122° 35.307' W
Water Development or Draft Site		43° 13.819' N	122° 27.002' W
Water Development or Draft Site		43° 14.298' N	122° 29.259' W
Water Development or Draft Site		43° 14.404' N	122° 40.326' W
Water Development or Draft Site		43° 15.963' N	122° 31.178' W
Water Development or Draft Site		43° 23.378' N	122° 37.225' W
Water Source		43° 12.424' N	122° 41.967' W
Water Source		43° 13.602' N	122° 41.051' W
Water Source		43° 17.830' N	122° 42.866' W
Water Source		43° 13.319' N	122° 44.045' W
Water Source		43° 23.428' N	122° 37.205' W
Water Source		43° 12.877' N	122° 46.412' W
Water Source		43° 13.047' N	122° 39.196' W
Water Source		43° 13.146' N	122° 39.352' W
Water Source		43° 14.446' N	122° 31.630' W
Water Source		43° 13.783' N	122° 26.870' W
Water Source		43° 20.475' N	122° 43.507' W

## Rough Patch Complex

FC Point Type	Label	Latitude WGS84 DDM	Longitude WGS84 DDM
Dip Site	Cedar Dip	43° 27.807' N	122° 38.624' W
Dip Site	Chilcoot Ridge Dip	43° 24.317' N	122° 43.818' W
Dip Site	Lemon Butte Dip	43° 29.000' N	122° 39.584' W
Dip Site	Loletta Dip	43° 23.950' N	122° 26.001' W
Division Break		43° 28.801' N	122° 40.639' W
Division Break		43° 33.706' N	122° 40.175' W
Division Break		43° 31.191' N	122° 42.926' W
Division Break		43° 31.507' N	122° 37.707' W
Division Break	Div R	43° 11.362' N	122° 38.483' W
Drop Point	200	43° 24.767' N	122° 41.531' W
Drop Point	210	43° 28.664' N	122° 44.043' W
Drop Point	220	43° 31.050' N	122° 44.704' W
Drop Point	230	43° 31.944' N	122° 41.792' W
Drop Point	240	43° 33.413' N	122° 40.850' W
Drop Point	250	43° 33.710' N	122° 40.212' W
Drop Point	271	43° 28.893' N	122° 36.072' W
Drop Point	71	43° 11.017' N	122° 29.009' W
Drop Point	72	43° 11.359' N	122° 38.516' W
Hazard	Foamed Adit	43° 33.571' N	122° 42.321' W
Hazard	Foamed Adit	43° 33.621' N	122° 42.208' W
Hazard	Foamed Adit	43° 33.674' N	122° 42.350' W
Hazard	Foamed Adit	43° 33.683' N	122° 42.357' W
Hazard	Foamed Adit	43° 34.764' N	122° 39.415' W
Hazard	Foamed Adit	43° 34.716' N	122° 39.367' W
Hazard	Foamed Adit	43° 35.209' N	122° 38.818' W
Hazard	Foamed Adit	43° 35.400' N	122° 38.036' W
Helispot	2	43° 24.913' N	122° 34.670' W
Helispot	25	43° 26.584' N	122° 26.710' W
Helispot	27	43° 29.055' N	122° 38.944' W
Helispot	3	43° 23.838' N	122° 31.293' W
Helispot	30	43° 29.324' N	122° 33.368' W
Helispot	50	43° 33.775' N	122° 40.171' W
Helispot	6	43° 11.348' N	122° 30.142' W
Helispot	60	43° 31.436' N	122° 44.627' W
Helispot	7	43° 16.600' N	122° 36.587' W
Helispot	70	43° 26.199' N	122° 46.380' W
Helispot	75	43° 26.125' N	122° 42.891' W
Hot Spot - Spot Fire		43° 27.030' N	122° 44.431' W
Hot Spot - Spot Fire		43° 28.812' N	122° 42.811' W
Hot Spot - Spot Fire		43° 29.330' N	122° 40.279' W
Hot Spot - Spot Fire		43° 31.639' N	122° 39.162' W
Hot Spot - Spot Fire		43° 30.432' N	122° 35.947' W
Hot Spot - Spot Fire		43° 34.260' N	122° 38.143' W
Hot Spot - Spot Fire		43° 33.678' N	122° 37.879' W
Hot Spot - Spot Fire		43° 34.234' N	122° 38.587' W
Hot Spot - Spot Fire		43° 34.020' N	122° 37.213' W
Hot Spot - Spot Fire		43° 35.136' N	122° 35.179' W
Hot Spot - Spot Fire		43° 28.500' N	122° 28.784' W
Hot Spot - Spot Fire		43° 08.934' N	122° 37.162' W
Hot Spot - Spot Fire		43° 23.637' N	122° 29.341' W
Hot Spot - Spot Fire		43° 28.305' N	122° 39.182' W
Hot Spot - Spot Fire		43° 28.782' N	122° 40.321' W
Mobile Weather Unit		43° 24.960' N	122° 34.620' W
Mobile Weather Unit		43° 35.840' N	122° 37.741' W
Mobile Weather Unit		43° 18.720' N	122° 04.261' W
Mobile Weather Unit	IRAWS 18	43° 31.661' N	122° 31.458' W
Repeater	CMD 7	43° 25.928' N	122° 43.857' W
Repeater	CMD5	43° 35.137' N	122° 39.182' W
Restricted Water Source		43° 25.845' N	122° 35.673' W
Restricted Water Source		43° 24.719' N	122° 36.542' W
Staging Area	Little Rock Staging	43° 30.225' N	122° 37.829' W
Staging Area	Staging 23	43° 25.491' N	122° 46.616' W
Water Development or Draft Site		43° 28.964' N	122° 44.045' W
Water Source		43° 10.798' N	122° 28.744' W

Legend for map symbols including: Wildfire Daily Fire Perimeter, Dip Site, Mobile Retardant Base, Helispot, Sling Site, Division Break, Drop Point, Camp, Staging Area, Lookout, Hot Spot - Spot Fire, Water Development or Draft Site, Mobile Weather Unit, Repeater, Hazard, Water Source, Restricted Water Source, Completed Burnout, Completed Dozer Line, Completed Hand Line, Planned Dozer Line, Planned Hand Line, Planned Mixed Construction Line, Access or Improved Road, Other, Repair Line, Escapes Route, Completed Road as Line, Planned Road as Line, Other Property, Pump, Water Tank, Helicopter Logging, ARTERIAL, Paved Road, Gravel Road, Dirt Roads, Unimproved Roads, Foam Drop, Retardant Drop, Temporary Flight Restriction, Fire Edge, Contained Line, Lake / Pond, Reservoir.

Scale: 0 0.5 1 2 3 Miles