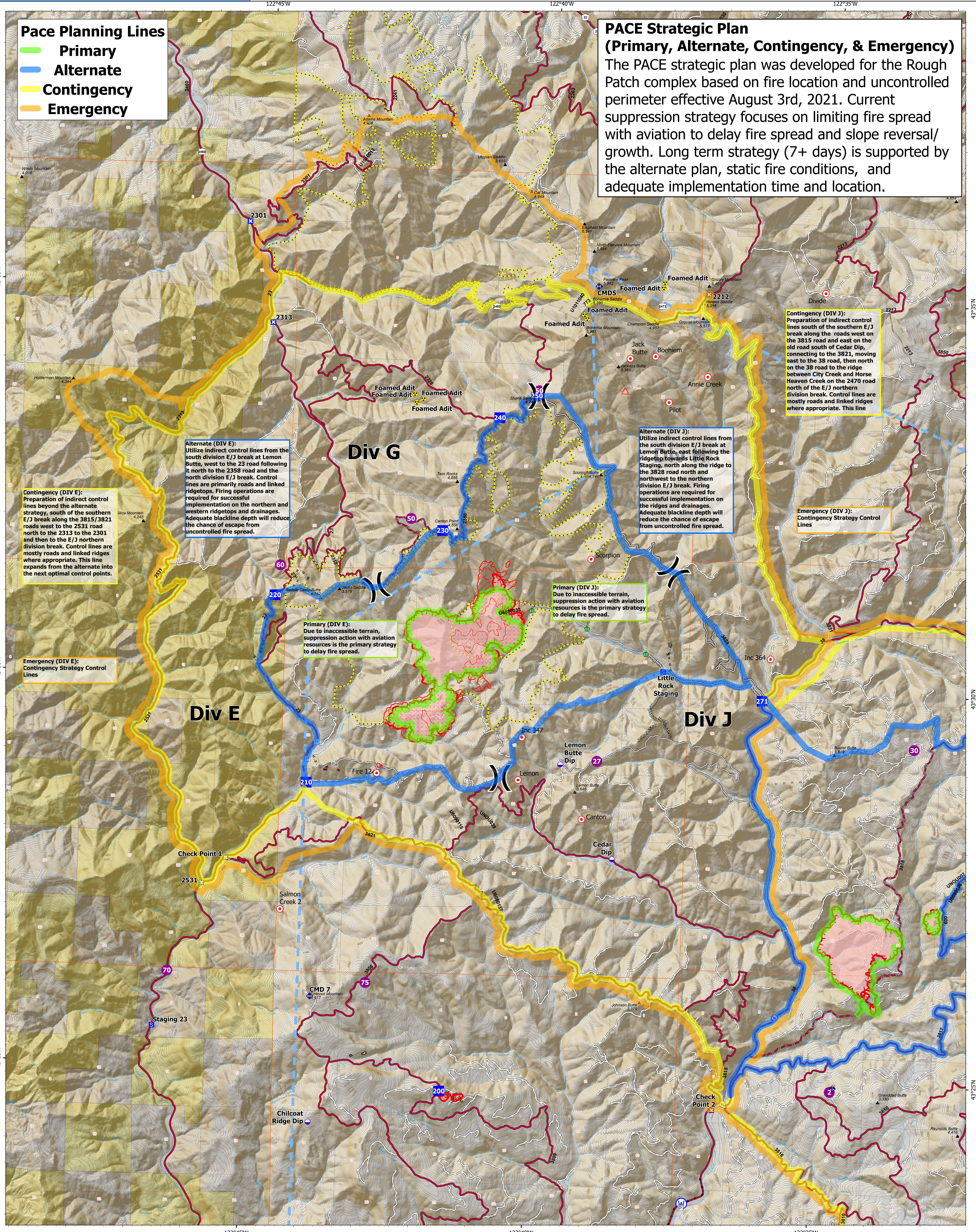


08/06/2021 - 24 HR  
OR-UPF-000373

- Pace Planning Lines**
- Primary
  - Alternate
  - Contingency
  - Emergency

**PACE Strategic Plan (Primary, Alternate, Contingency, & Emergency)**

The PACE strategic plan was developed for the Rough Patch complex based on fire location and uncontrolled perimeter effective August 3rd, 2021. Current suppression strategy focuses on limiting fire spread with aviation to delay fire spread and slope reversal/growth. Long term strategy (7+ days) is supported by the alternate plan, static fire conditions, and adequate implementation time and location.



**Contingency (DIV E):** Preparation of indirect control lines beyond the alternate strategy, south of the southern E/J break along the 3815/3821 roads west to the 2531 road north to the 2313 to the 2301 and then to the E/J northern division break. Control lines are mostly roads and linked ridges where appropriate. This line expands from the alternate into the next optimal control points.

**Alternate (DIV E):** Utilize indirect control lines from the south division E/J break at Lemon Butte, west to the 23 road following it north to the 2358 road and the north division E/J break. Control lines are primarily roads and linked ridgetops. Firing operations are required for successful implementation on the northern and western ridgetops and drainages. Adequate blackline depth will reduce the chance of escape from uncontrolled fire spread.

**Primary (DIV E):** Due to inaccessible terrain, suppression action with aviation resources is the primary strategy to delay fire spread.

**Primary (DIV J):** Due to inaccessible terrain, suppression action with aviation resources is the primary strategy to delay fire spread.

**Alternate (DIV J):** Utilize indirect control lines from the south division E/J break at Lemon Butte, east following the ridgetop towards Little Rock Staging, north along the ridge to the 3828 road north and northwest to the northern division E/J break. Firing operations are required for successful implementation on the ridges and drainages. Adequate blackline depth will reduce the chance of escape from uncontrolled fire spread.

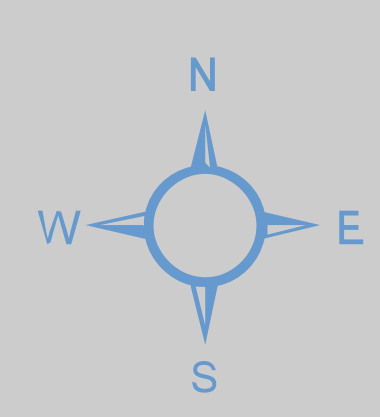
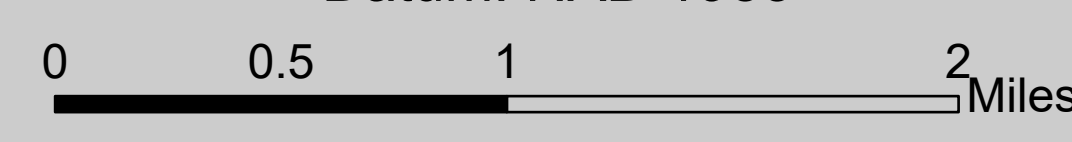
**Contingency (DIV J):** Preparation of indirect control lines south of the southern E/J break along the roads west on the 3815 road and east on the old road south of Cedar Dip, connecting to the 3821, moving east to the 38 road, then north on the 38 road to the ridge between City Creek and Horse Heaven Creek on the 2470 road north of the E/J northern division break. Control lines are mostly roads and linked ridges where appropriate. This line

**Emergency (DIV J):** Contingency Strategy Control Lines

2,419 Est. Acres

Acres from IR 08/06/2021 @ 2255

Datum: NAD 1983



- |  |   |  |  |  |   |   |   |
|--|---|--|--|--|---|---|---|
| <ul style="list-style-type: none"> <li>Avoidance Areas</li> <li>Area to Protect (ATP)</li> <li>Dry Hills</li> <li>Label Pairs</li> <li>Pump</li> <li>Water Tank</li> <li>Dip Site</li> </ul> | <ul style="list-style-type: none"> <li>Helipoint</li> <li>Division Break</li> <li>Drop Point</li> <li>Close</li> <li>Staging Area</li> <li>Hot Spot - Spot Fire</li> <li>Value at Risk</li> </ul> | <ul style="list-style-type: none"> <li>Water Development or Draft Site</li> <li>Stream Crossing</li> <li>Mobile Weather Unit</li> <li>Repeater</li> <li>Hazard</li> <li>Water Source</li> <li>Restricted Water Source</li> </ul> | <ul style="list-style-type: none"> <li>Completed Doser Line</li> <li>Completed Hand Line</li> <li>Planned Doser Line</li> <li>Planned Hand Line</li> <li>Planned Road as Line</li> </ul> | <ul style="list-style-type: none"> <li>Access or Improved Road</li> <li>Other</li> <li>Riprap Line</li> <li>Temporary Flight Restriction</li> <li>Fire Edge</li> <li>Wildfire Daily Fire Perimeter</li> <li>Roadless Area</li> </ul> | <ul style="list-style-type: none"> <li>Aerial</li> <li>Summit</li> <li>Area Closure</li> <li>Contour 50%</li> <li>Lake / Pond</li> <li>Stream/River</li> <li>BLM</li> </ul> | <ul style="list-style-type: none"> <li>Private</li> <li>IR Polygon</li> <li>IR Area Covered by IR Flight</li> <li>Clad Cover</li> <li>IR Heat Perimeter</li> <li>IR Intense Heat</li> </ul> | <ul style="list-style-type: none"> <li>IR Scattered Heat</li> <li>IR</li> <li>Primary</li> <li>Alternate</li> <li>Contingency</li> <li>Emergency</li> </ul> |
|--|---|--|--|--|---|---|---|

