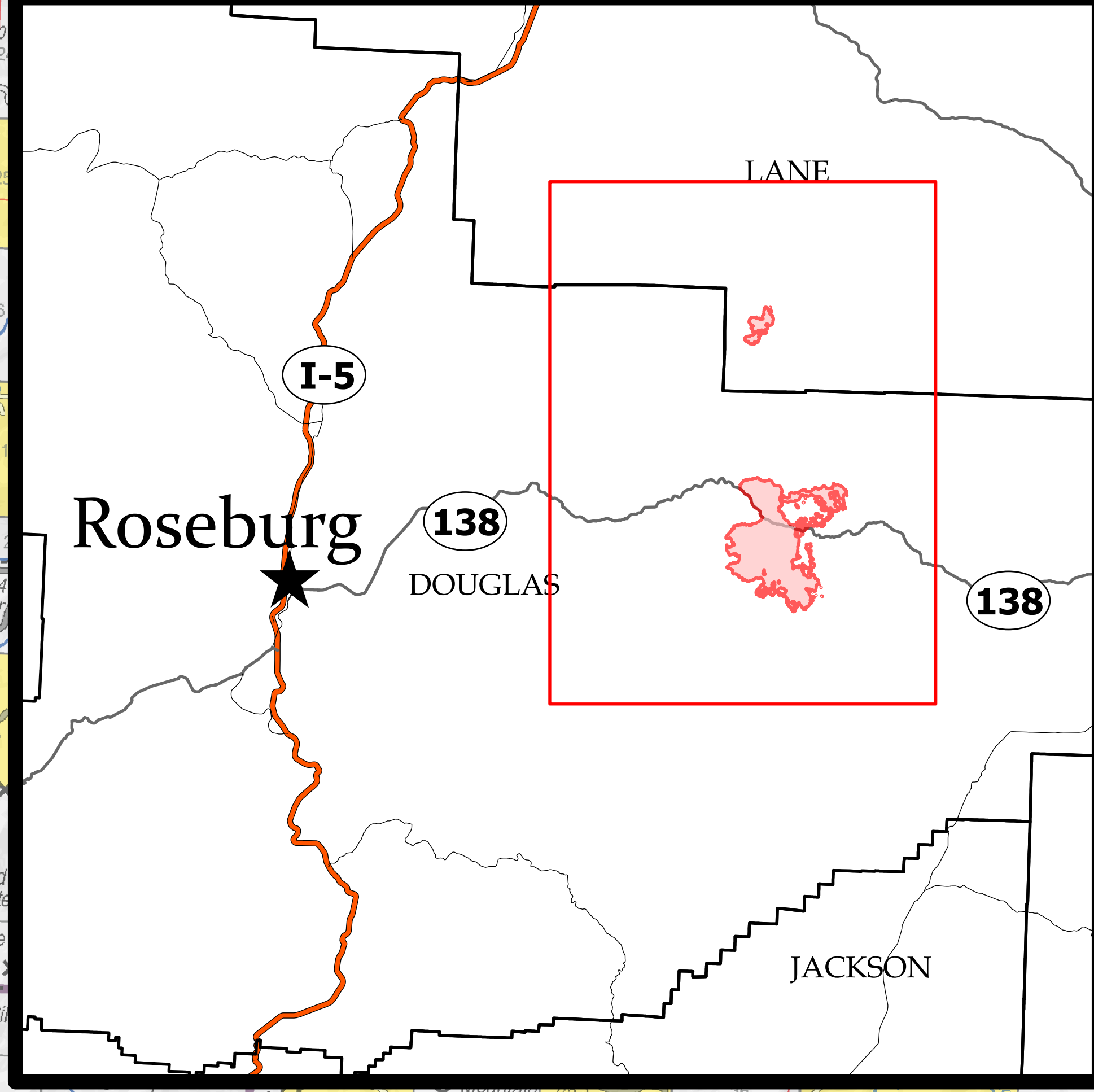
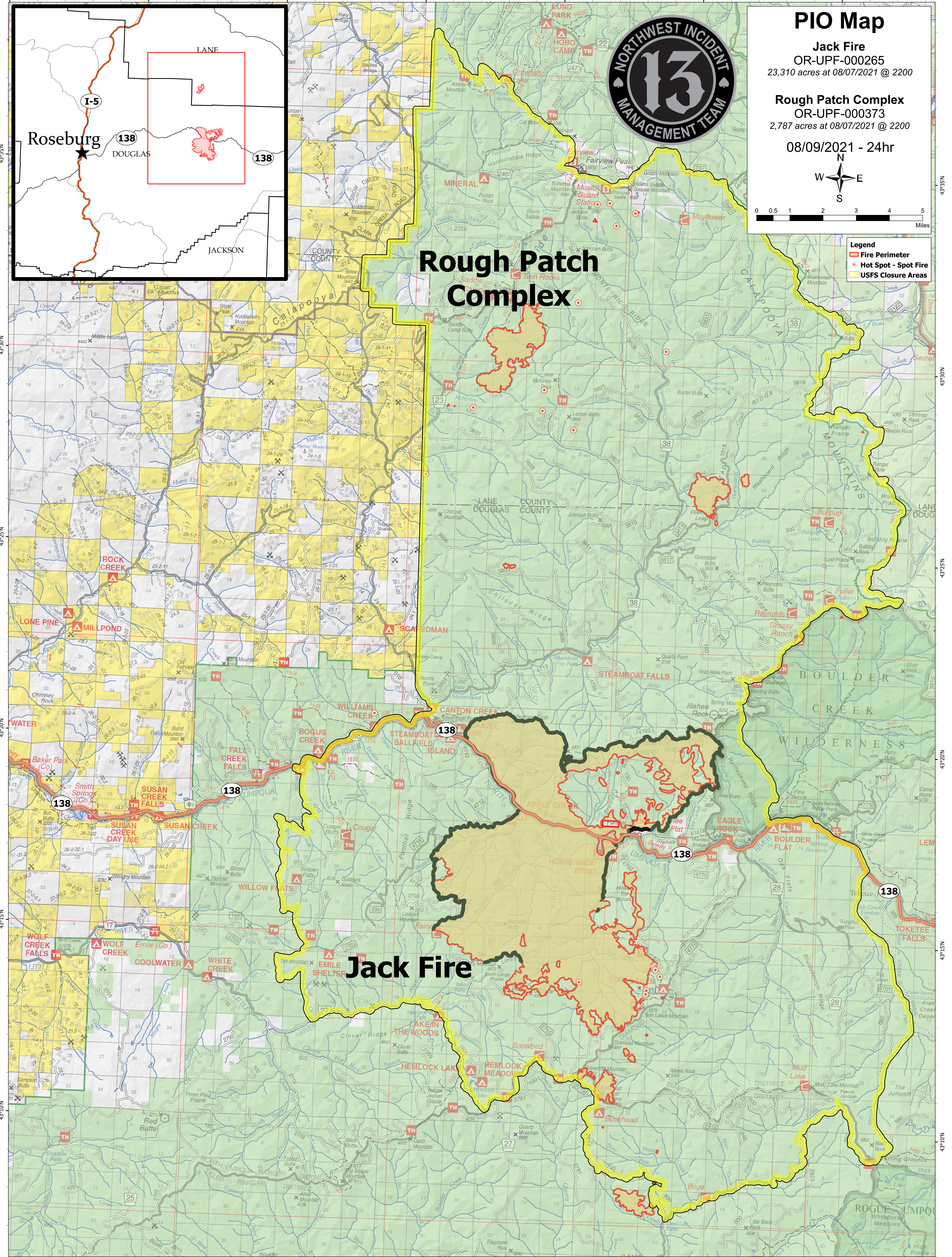


122°35'W 122°30'W 122°25'W 122°20'W 122°15'W 122°10'W 122°5'W 122°0'W



**PIO Map**

**Jack Fire**  
OR-UPF-000265  
23,310 acres at 08/07/2021 @ 2200

**Rough Patch Complex**  
OR-UPF-000373  
2,787 acres at 08/07/2021 @ 2200

08/09/2021 - 24hr

- Legend**
- Fire Perimeter
  - Hot Spot - Spot Fire
  - USFS Closure Areas

# Rough Patch Complex

# Jack Fire

43°35'N 43°30'N 43°25'N 43°20'N 43°15'N 43°10'N

122°55'W 122°50'W 122°45'W 122°40'W 122°35'W 122°30'W