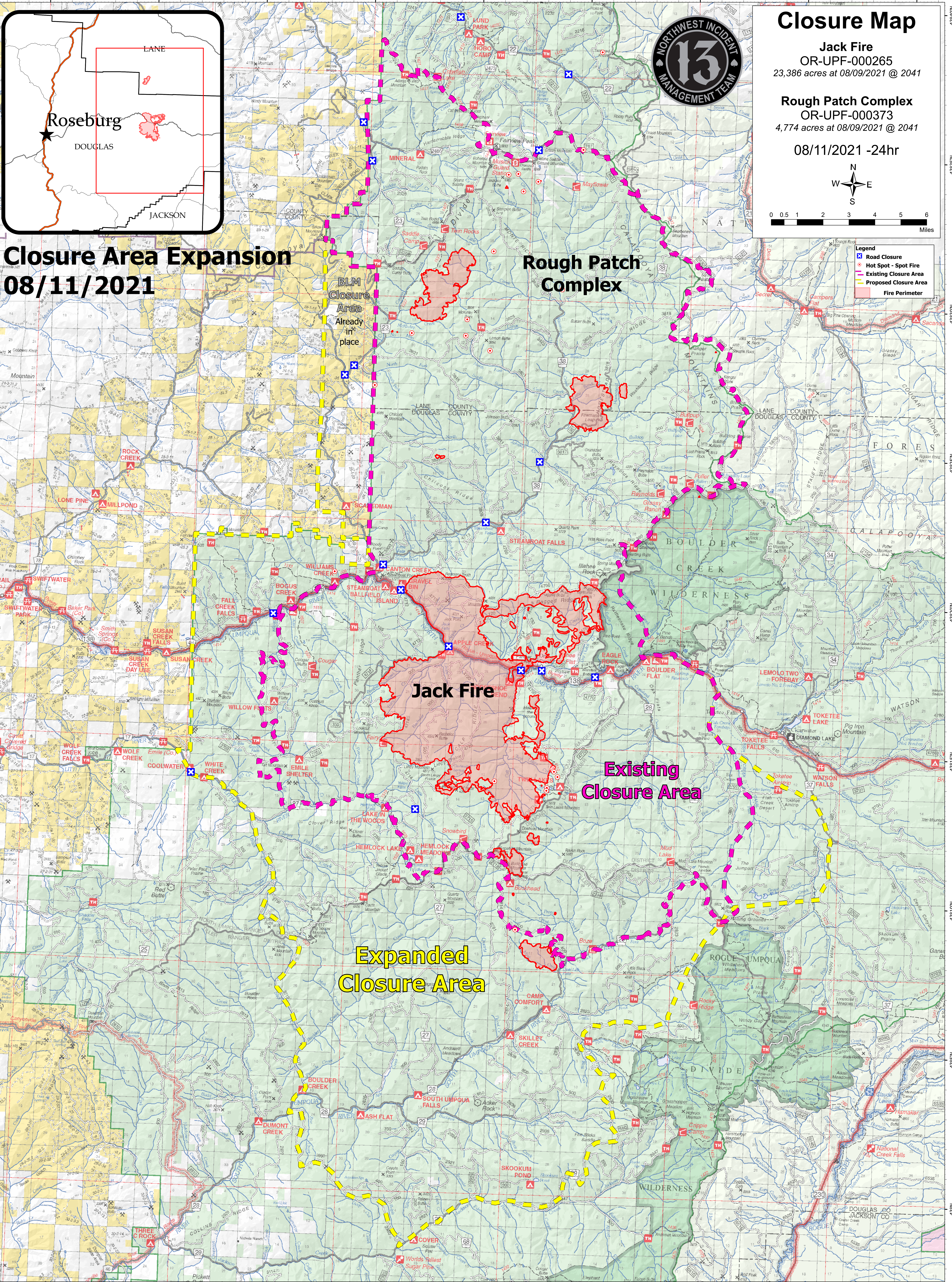


123°W 122°55'W 122°50'W 122°45'W 122°40'W 122°35'W 122°30'W 122°25'W 122°20'W



# Closure Area Expansion 08/11/2021

# Rough Patch Complex

# Jack Fire

# Existing Closure Area

# Expanded Closure Area

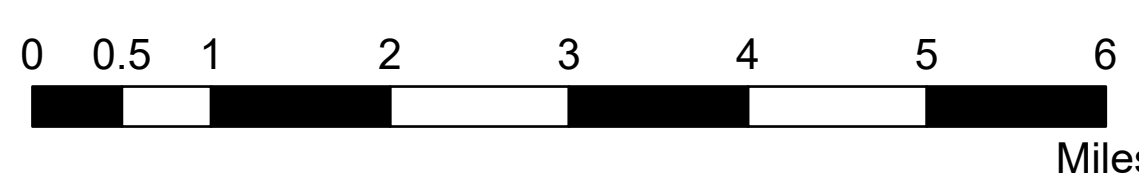
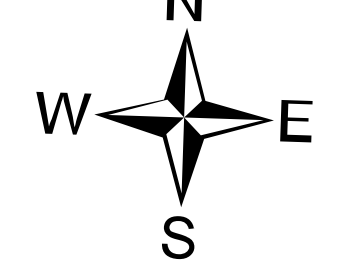
BLM Closure Area Already in place

## Closure Map

**Jack Fire**  
OR-UPF-000265  
23,386 acres at 08/09/2021 @ 2041

**Rough Patch Complex**  
OR-UPF-000373  
4,774 acres at 08/09/2021 @ 2041

08/11/2021 -24hr



- Legend**
- Road Closure
  - Hot Spot - Spot Fire
  - Existing Closure Area
  - Proposed Closure Area
  - Fire Perimeter

123°W 122°55'W 122°50'W 122°45'W 122°40'W 122°35'W 122°30'W 122°25'W 122°20'W

43°35'N 43°30'N 43°25'N 43°20'N 43°15'N 43°10'N 43°5'N

123°W 122°55'W 122°50'W 122°45'W 122°40'W 122°35'W 122°30'W 122°25'W 122°20'W