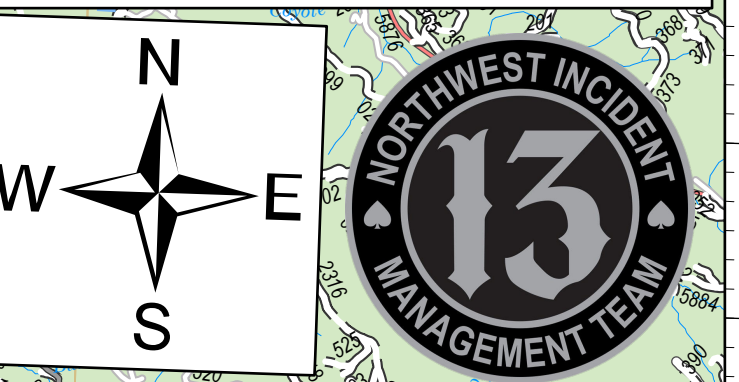


Transportation Map

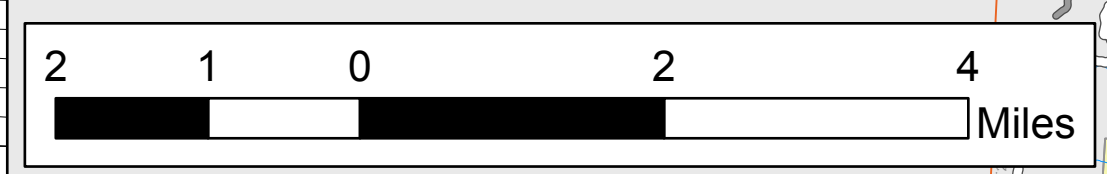
Jack Fire
OR-UPF-000265
23,386 acres at 08/09/2021 @ 2041

Rough Patch Complex
OR-UPF-000373
4,774 acres at 08/09/2021 @ 2041
08/11/2021 - 24hr

NW Team 13
8/10/2021 2136
Acres from IR Acres from IR
North American 1983 Datum, Lat/Long
Grid



- Other Property
- Pump
- Water Tank
- Dip Site
- Mobile Retardant Base
- Helispot
- Sling Site
- Division Break
- Drop Point
- Closure
- Camp
- Staging Area
- Lookout
- Hot Spot - Spot Fire
- Value at Risk
- Other
- Landmark
- Bridge
- Water Development or Draft Site
- Mobile Weather Unit
- Internet Access
- Repeater
- Hazard
- Restricted Water Source
- Completed Burnout
- Completed Dozer Line
- Completed Hand Line
- Completed Road as Line
- Planned Dozer Line
- Planned Fuel Break
- Planned Hand Line
- Planned Mixed Construction Line
- Planned Road as Line
- Access or Improved Road
- Other
- Repair Line
- Escape Route
- Foam Drop
- Retardant Drop
- Route
- Temporary Flight Restriction
- Fire Edge
- Contained Line
- Wildfire Daily Fire Perimeter
- Paved Roads
- Dirt (Not Paved)
- Primary Hwy
- ARTERIAL



FC Point Type	Label	Latitude WGS84 DDM	Longitude WGS84 DDM	FC Point Type	Label	Latitude WGS84 DDM	Longitude WGS84 DDM
Drop Point	10	43° 20.746' N	122° 44.171' W	Drop Point	65	43° 15.680' N	122° 25.696' W
Drop Point	100			Drop Point	67	43° 17.475' N	122° 37.168' W
Drop Point	102			Drop Point	68	43° 14.696' N	122° 35.987' W
Drop Point	103			Drop Point	69	43° 14.951' N	122° 36.265' W
Drop Point	20	43° 22.600' N	122° 39.183' W	Drop Point	70	43° 13.440' N	122° 34.727' W
Drop Point	200	43° 24.767' N	122° 41.531' W	Drop Point	71	43° 11.017' N	122° 39.009' W
Drop Point	210	43° 28.664' N	122° 44.043' W	Drop Point	72	43° 11.359' N	122° 38.516' W
Drop Point	220	43° 31.050' N	122° 44.704' W	Drop Point	73	43° 13.354' N	122° 36.108' W
Drop Point	230	43° 31.944' N	122° 41.792' W	Drop Point	74	43° 15.667' N	122° 36.362' W
Drop Point	240	43° 33.413' N	122° 40.850' W	Drop Point	75	43° 14.820' N	122° 34.724' W
Drop Point	250	43° 33.710' N	122° 40.212' W	Drop Point	76	43° 16.895' N	122° 36.319' W
Drop Point	271	43° 29.893' N	122° 36.072' W	Drop Point	77		
Drop Point	280	43° 26.333' N	122° 35.154' W	Drop Point	85	43° 13.376' N	122° 40.405' W
Drop Point	281	43° 24.725' N	122° 36.567' W	Drop Point	86	43° 13.493' N	122° 41.077' W
Drop Point	30	43° 20.223' N	122° 36.616' W	Drop Point	87	43° 14.366' N	122° 40.374' W
Drop Point	31	43° 19.080' N	122° 33.557' W	Drop Point	88	43° 12.854' N	122° 41.907' W
Drop Point	40	43° 20.405' N	122° 33.835' W	Drop Point	89	43° 13.366' N	122° 42.333' W
Drop Point	60	43° 17.739' N	122° 36.558' W	Drop Point	90	43° 14.745' N	122° 43.010' W
Drop Point	61	43° 17.446' N	122° 33.885' W	Drop Point	91	43° 16.787' N	122° 44.348' W
Drop Point	62	43° 17.973' N	122° 34.704' W	Drop Point	93	43° 17.204' N	122° 43.591' W
Drop Point	63	43° 17.694' N	122° 28.816' W	Drop Point	96	43° 18.314' N	122° 40.723' W
Drop Point	64	43° 16.553' N	122° 27.312' W				

