

# AIR OPERATIONS

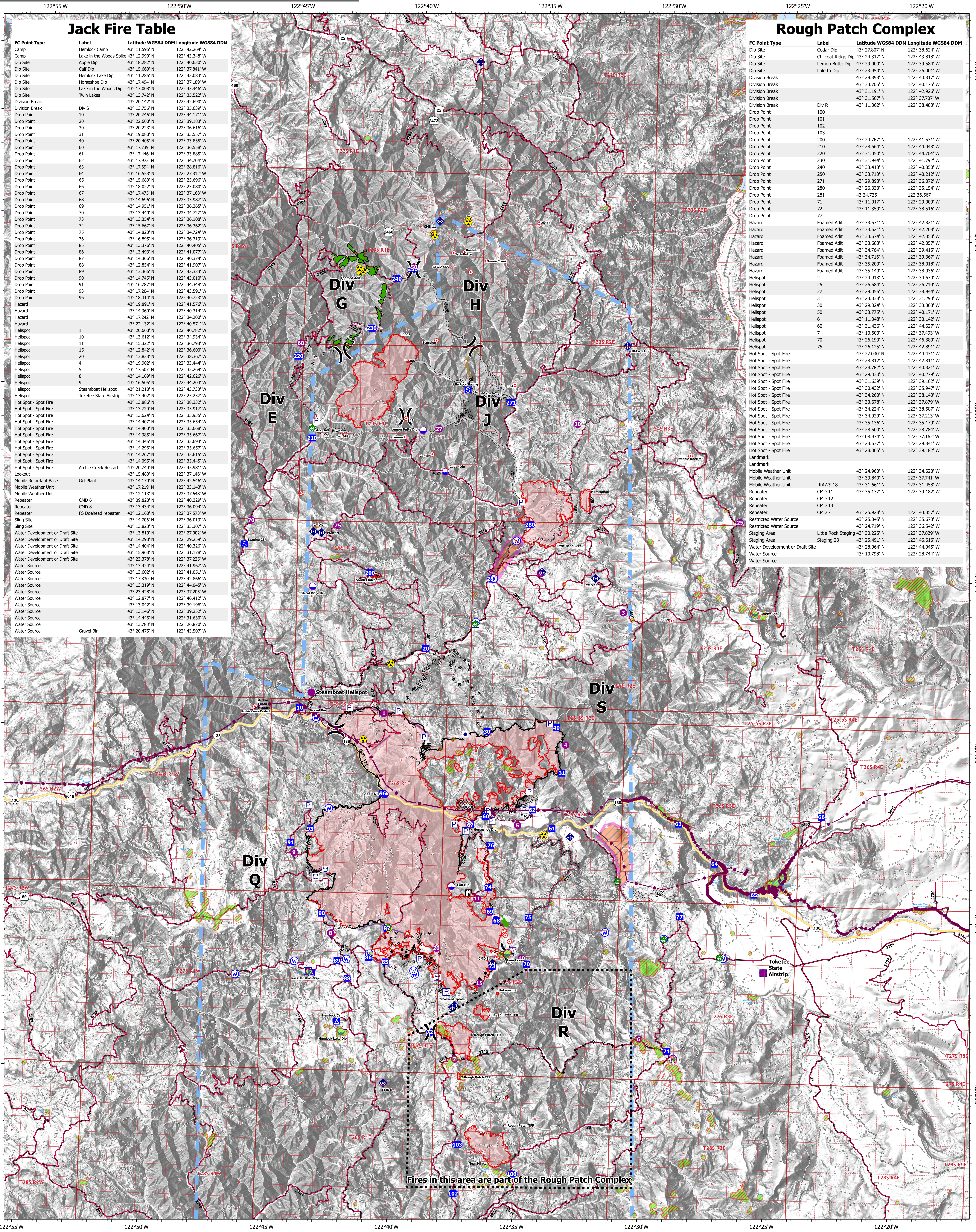
# JACK FIRE ROUGH PATCH CX

23,418 acres at 08/10/2021 @ 2108

5,727 acres at 08/10/2021 @ 2108



JACK FIRE OR-UPF-000265 ROUGH PATCH CX OR-UPF-000373 8/12/2021 - 24HR



## Jack Fire Table

FC Point Type	Label	Latitude WGS84 DDM	Longitude WGS84 DDM
Camp	Hemlock Camp	43° 11.595' N	122° 42.264' W
Camp	Lake in the Woods Spike	43° 12.990' N	122° 43.348' W
Dip Site	Apple Dip	43° 18.282' N	122° 40.630' W
Dip Site	Call Dip	43° 15.660' N	122° 37.841' W
Dip Site	Hemlock Lake Dip	43° 11.285' N	122° 42.083' W
Dip Site	Horseshoe Dip	43° 17.494' N	122° 37.189' W
Dip Site	Lake in the Woods Dip	43° 13.008' N	122° 43.446' W
Dip Site	Twin Lakes	43° 13.742' N	122° 35.522' W
Division Break		43° 20.142' N	122° 42.690' W
Division Break	Div S	43° 13.756' N	122° 35.639' W
Drop Point	10	43° 20.746' N	122° 44.171' W
Drop Point	20	43° 22.600' N	122° 39.183' W
Drop Point	30	43° 20.223' N	122° 36.616' W
Drop Point	31	43° 19.080' N	122° 33.557' W
Drop Point	40	43° 20.405' N	122° 33.835' W
Drop Point	60	43° 17.739' N	122° 36.538' W
Drop Point	61	43° 17.446' N	122° 35.887' W
Drop Point	62	43° 17.973' N	122° 34.704' W
Drop Point	63	43° 17.694' N	122° 28.816' W
Drop Point	64	43° 16.553' N	122° 27.312' W
Drop Point	65	43° 15.680' N	122° 25.696' W
Drop Point	66	43° 18.022' N	122° 23.080' W
Drop Point	67	43° 17.475' N	122° 37.108' W
Drop Point	68	43° 14.698' N	122° 36.319' W
Drop Point	69	43° 14.951' N	122° 36.265' W
Drop Point	70	43° 13.440' N	122° 34.727' W
Drop Point	73	43° 13.354' N	122° 36.108' W
Drop Point	74	43° 15.667' N	122° 36.362' W
Drop Point	75	43° 14.820' N	122° 34.724' W
Drop Point	76	43° 16.895' N	122° 36.319' W
Drop Point	78	43° 13.376' N	122° 40.823' W
Drop Point	86	43° 13.493' N	122° 41.077' W
Drop Point	87	43° 14.366' N	122° 40.374' W
Drop Point	88	43° 12.854' N	122° 41.907' W
Drop Point	89	43° 13.366' N	122° 42.333' W
Drop Point	90	43° 14.748' N	122° 43.010' W
Drop Point	91	43° 16.787' N	122° 40.348' W
Drop Point	93	43° 17.204' N	122° 43.591' W
Drop Point	96	43° 18.314' N	122° 40.723' W
Hazard		43° 19.891' N	122° 41.576' W
Hazard		43° 14.360' N	122° 40.314' W
Hazard		43° 17.242' N	122° 34.200' W
Hazard		43° 22.132' N	122° 40.571' W
Helispot	1	43° 20.668' N	122° 34.924' W
Helispot	11	43° 15.322' N	122° 36.798' W
Helispot	15	43° 12.842' N	122° 36.600' W
Helispot	20	43° 13.833' N	122° 38.367' W
Helispot	4	43° 19.902' N	122° 33.444' W
Helispot	5	43° 17.507' N	122° 35.269' W
Helispot	8	43° 14.169' N	122° 42.626' W
Helispot	9	43° 16.505' N	122° 44.204' W
Helispot	Steamboat Helispot	43° 21.210' N	122° 43.730' W
Helispot	Toketelee State Airstrip	43° 13.402' N	122° 33.143' W
Hot Spot - Spot Fire		43° 13.886' N	122° 38.332' W
Hot Spot - Spot Fire		43° 13.720' N	122° 35.917' W
Hot Spot - Spot Fire		43° 13.624' N	122° 35.935' W
Hot Spot - Spot Fire		43° 14.407' N	122° 35.654' W
Hot Spot - Spot Fire		43° 14.400' N	122° 35.668' W
Hot Spot - Spot Fire		43° 14.385' N	122° 35.667' W
Hot Spot - Spot Fire		43° 14.345' N	122° 35.693' W
Hot Spot - Spot Fire		43° 14.296' N	122° 35.657' W
Hot Spot - Spot Fire		43° 14.267' N	122° 35.615' W
Hot Spot - Spot Fire		43° 14.095' N	122° 35.445' W
Hot Spot - Spot Fire	Archie Creek Restart	43° 20.740' N	122° 45.981' W
Lookout		43° 15.480' N	122° 37.146' W
Mobile Retardant Base	Gel Plant	43° 14.170' N	122° 42.546' W
Mobile Weather Unit		43° 17.219' N	122° 33.143' W
Mobile Weather Unit		43° 12.113' N	122° 37.648' W
Repeater	CHD 6	43° 09.820' N	122° 40.329' W
Repeater	CHD 8	43° 13.434' N	122° 36.094' W
Repeater	FS Doehead repeater	43° 12.160' N	122° 37.573' W
Sling Site		43° 14.706' N	122° 36.013' W
Sling Site		43° 13.823' N	122° 35.307' W
Water Development or Draft Site		43° 13.819' N	122° 27.002' W
Water Development or Draft Site		43° 14.298' N	122° 29.259' W
Water Development or Draft Site		43° 14.401' N	122° 40.326' W
Water Development or Draft Site		43° 15.963' N	122° 31.178' W
Water Development or Draft Site		43° 23.378' N	122° 37.225' W
Water Source		43° 13.424' N	122° 41.967' W
Water Source		43° 13.602' N	122° 41.051' W
Water Source		43° 17.830' N	122° 42.866' W
Water Source		43° 13.319' N	122° 44.045' W
Water Source		43° 23.428' N	122° 37.305' W
Water Source		43° 12.877' N	122° 46.412' W
Water Source		43° 13.042' N	122° 39.196' W
Water Source		43° 13.146' N	122° 39.252' W
Water Source		43° 14.446' N	122° 31.630' W
Water Source		43° 13.783' N	122° 26.870' W
Water Source	Gravel Bin	43° 20.475' N	122° 43.507' W

## Rough Patch Complex

FC Point Type	Label	Latitude WGS84 DDM	Longitude WGS84 DDM
Dip Site	Cedar Dip	43° 27.807' N	122° 38.624' W
Dip Site	Chilcoat Ridge Dip	43° 24.317' N	122° 43.818' W
Dip Site	Lemon Butte Dip	43° 29.000' N	122° 39.584' W
Dip Site	Loletta Dip	43° 23.950' N	122° 26.001' W
Division Break		43° 23.953' N	122° 40.317' W
Division Break		43° 33.706' N	122° 40.175' W
Division Break		43° 31.191' N	122° 42.926' W
Division Break		43° 31.507' N	122° 37.707' W
Division Break	Div R	43° 11.362' N	122° 38.483' W
Drop Point	100		
Drop Point	101		
Drop Point	102		
Drop Point	103		
Drop Point	200	43° 24.767' N	122° 41.531' W
Drop Point	210	43° 26.664' N	122° 44.043' W
Drop Point	220	43° 31.050' N	122° 44.704' W
Drop Point	230	43° 31.944' N	122° 41.792' W
Drop Point	240	43° 33.413' N	122° 40.850' W
Drop Point	250	43° 33.710' N	122° 40.212' W
Drop Point	271	43° 29.893' N	122° 36.072' W
Drop Point	280	43° 26.333' N	122° 35.154' W
Drop Point	281	43 24.725	122 36.567
Drop Point	71	43° 11.017' N	122° 29.009' W
Drop Point	72	43° 11.359' N	122° 38.516' W
Drop Point	77		
Foamed Adit		43° 33.571' N	122° 42.321' W
Foamed Adit		43° 33.621' N	122° 42.208' W
Foamed Adit		43° 33.674' N	122° 42.350' W
Foamed Adit		43° 33.683' N	122° 42.357' W
Foamed Adit		43° 34.764' N	122° 39.415' W
Foamed Adit		43° 34.716' N	122° 39.367' W
Foamed Adit		43° 35.209' N	122° 38.018' W
Foamed Adit		43° 35.140' N	122° 38.036' W
Helispot	2	43° 24.913' N	122° 34.670' W
Helispot	25	43° 25.584' N	122° 35.710' W
Helispot	27	43° 29.055' N	122° 38.944' W
Helispot	3	43° 23.838' N	122° 31.293' W
Helispot	30	43° 29.324' N	122° 33.368' W
Helispot	50	43° 33.775' N	122° 40.171' W
Helispot	6	43° 11.348' N	122° 30.142' W
Helispot	60	43° 31.436' N	122° 44.627' W
Helispot	7	43° 10.600' N	122° 37.493' W
Helispot	70	43° 26.199' N	122° 46.380' W
Helispot		43° 26.125' N	122° 42.891' W
Hot Spot - Spot Fire		43° 27.030' N	122° 44.431' W
Hot Spot - Spot Fire		43° 28.812' N	122° 42.811' W
Hot Spot - Spot Fire		43° 28.782' N	122° 40.321' W
Hot Spot - Spot Fire		43° 29.330' N	122° 40.279' W
Hot Spot - Spot Fire		43° 31.639' N	122° 39.162' W
Hot Spot - Spot Fire		43° 30.432' N	122° 35.947' W
Hot Spot - Spot Fire		43° 34.260' N	122° 38.143' W
Hot Spot - Spot Fire		43° 33.678' N	122° 37.879' W
Hot Spot - Spot Fire		43° 34.224' N	122° 38.587' W
Hot Spot - Spot Fire		43° 34.020' N	122° 37.213' W
Hot Spot - Spot Fire		43° 35.136' N	122° 35.179' W
Hot Spot - Spot Fire		43° 28.500' N	122° 28.784' W
Hot Spot - Spot Fire		43° 08.934' N	122° 37.162' W
Hot Spot - Spot Fire		43° 23.637' N	122° 29.341' W
Hot Spot - Spot Fire		43° 28.305' N	122° 39.182' W
Landmark			
Mobile Weather Unit		43° 24.960' N	122° 34.620' W
Mobile Weather Unit		43° 39.840' N	122° 37.741' W
Mobile Weather Unit	IRAWS 18	43° 31.661' N	122° 31.458' W
Repeater	CHD 11	43° 35.137' N	122° 39.182' W
Repeater	CHD 12		
Repeater	CHD 13		
Repeater	CMD 7	43° 25.928' N	122° 43.857' W
Restricted Water Source		43° 25.845' N	122° 35.673' W
Restricted Water Source		43° 24.719' N	122° 36.542' W
Staging Area	Little Rock Staging	43° 30.225' N	122° 37.829' W
Staging Area	Staging 23	43° 25.491' N	122° 46.616' W
Water Development or Draft Site		43° 28.964' N	122° 44.045' W
Water Source		43° 10.798' N	122° 28.744' W

Fires in this area are part of the Rough Patch Complex

North Arrow  
Scale: 0, 0.5, 1, 2, 3 Miles

Wildfire Daily Fire Perimeter	Division Break	Hot Spot - Spot Fire	Hazard	Completed Hand Line	Planned Mixed Construction Line	Escape Route	Contained Line	ARTERIAL	Lake / Pond
Dip Site	Drop Point	Landmark	Water Source	Completed Road as Line	Planned Road as Line	Foam Drop	Other Property	Paved Road	Reservoir
Mobile Retardant Base	Camp	Water Development or Draft Site	Restricted Water Source	Planned Dozer Line	Access or Improved Road	Retardant Drop	Pump	Gravel Road	Utility Power Lines
Helispot	Staging Area	Mobile Weather Unit	Completed Burnout	Planned Fuel Break	Other	Temporary Flight Restriction	Water Tank	Dirt Roads	Drifter Timber Sale (Helicopter Logging)
Sling Site	Lookout	Repeater	Completed Dozer Line	Planned Hand Line	Repair Line	Fire Edge	Primary Hwy	Unimproved Roads	Sensitive Areas
								Aerial Fire Retardant Avoidance Areas	