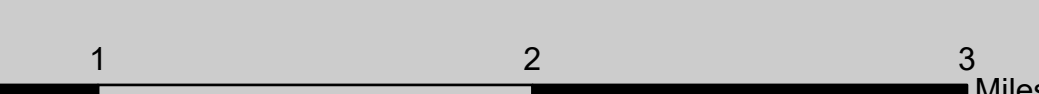
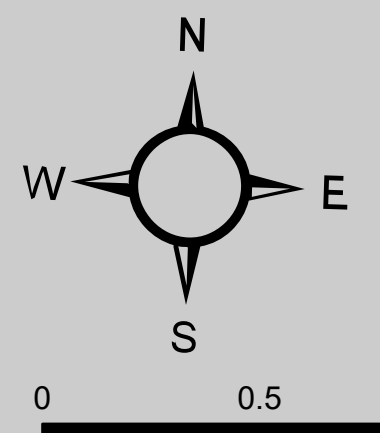
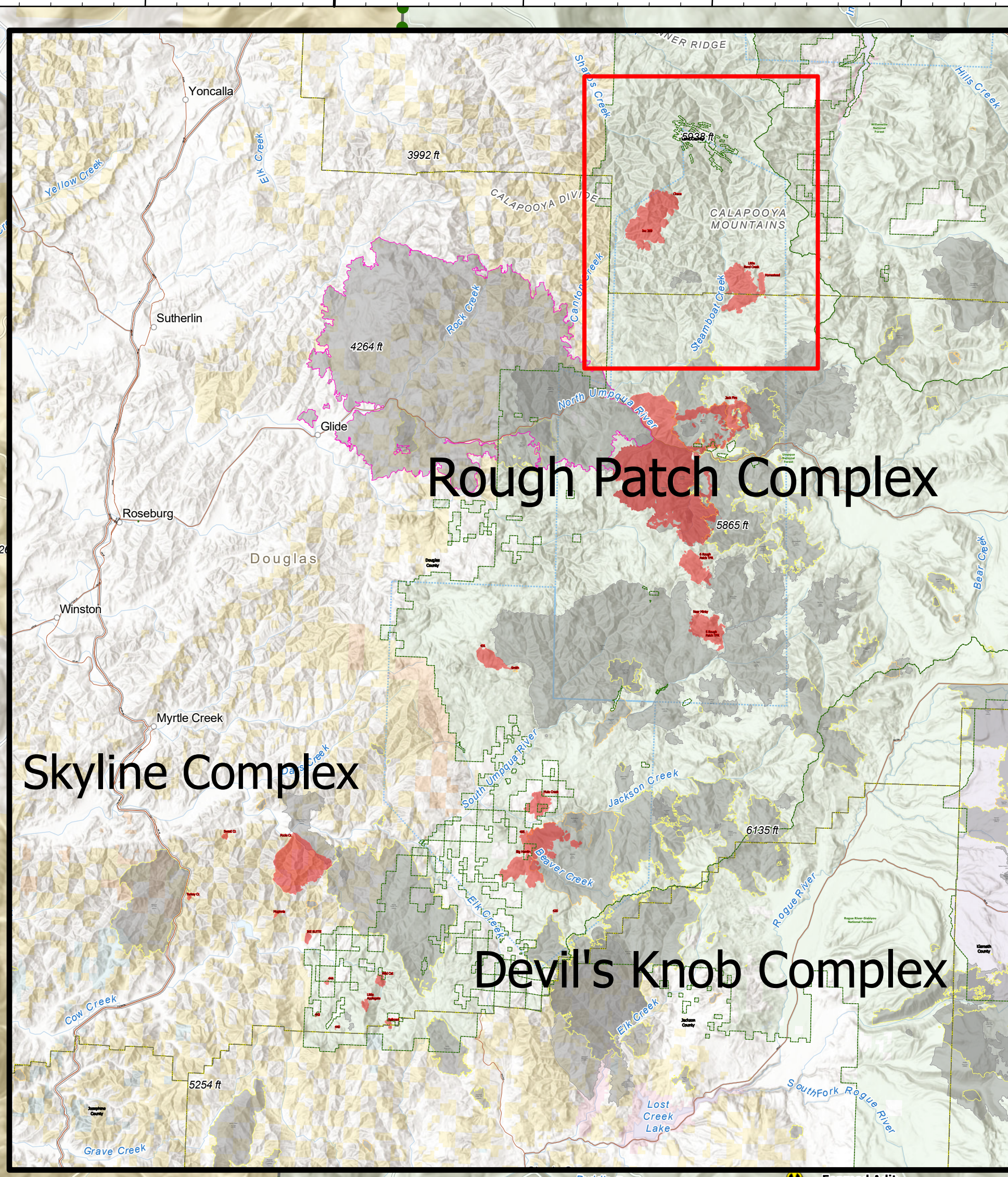
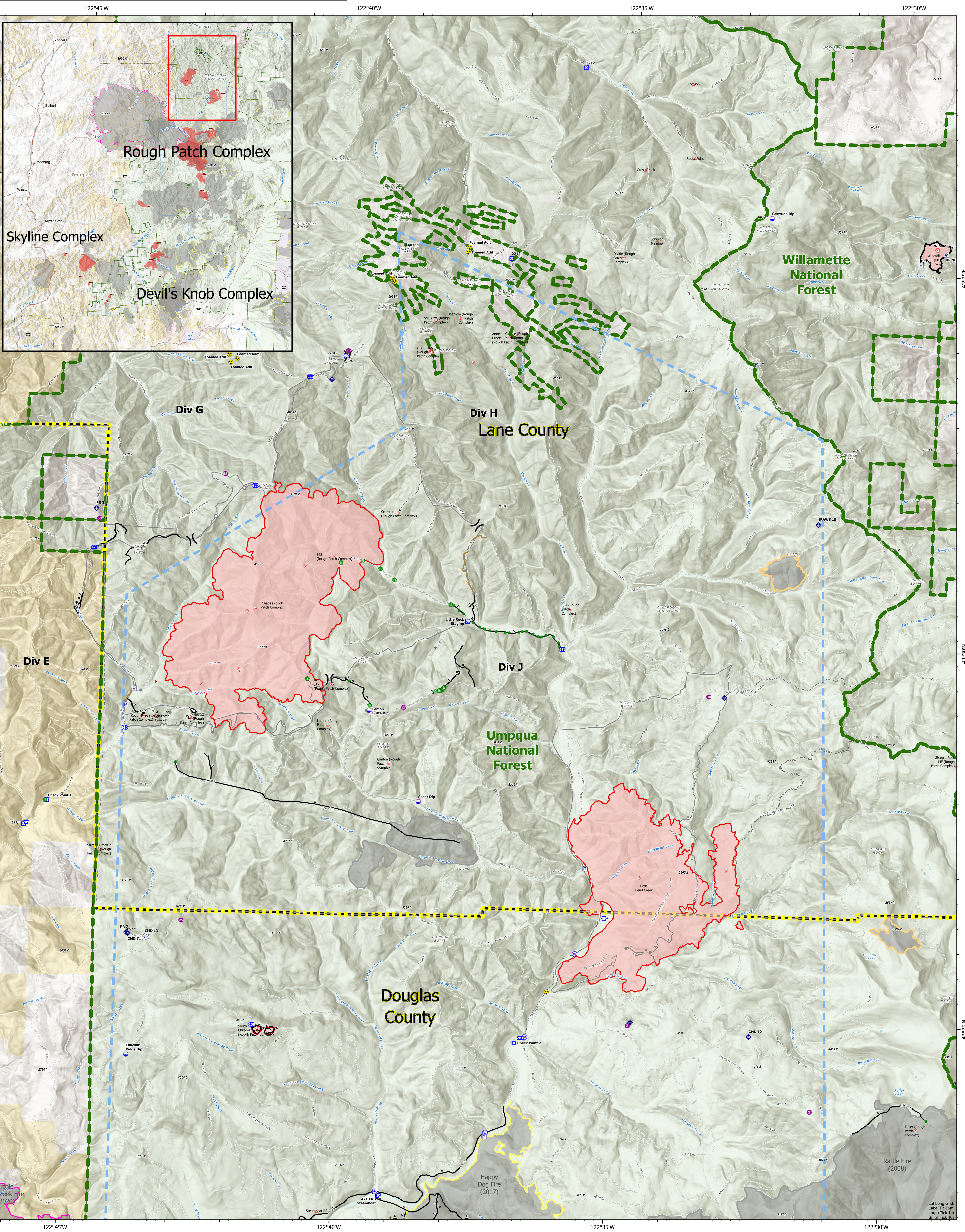




08/14/2021 - 24 HR



<ul style="list-style-type: none"> Administrative Forest Fire County NWCC Fire History (2000-2020) 2000-2009 2010-2014 2015-2019 2020 	<ul style="list-style-type: none"> SMA GRP Bureau of Land Management (BLM) US Forest Service (USFS) Private Accountable Property Pump Water Tank 	<ul style="list-style-type: none"> Event Line Completed Outer Line Completed Head Line Completed Road as Line Planned Outer Line Planned Head Line Planned Road as Line Planned Road as Line Access or Improved Road 	<ul style="list-style-type: none"> Other Road Temporary Flight Restriction Fire Edge Contained Line Event Polygon Wildfire Daily Fire Perimeter Label Print 	<ul style="list-style-type: none"> Accountable Property Dip Site Hot Spot - Spot Fire Fire Origin 	<ul style="list-style-type: none"> Value at Risk Other Landmark Water Development or Draft Site Stream Crossing Road Repair Road Repair Landing or Log Dock 	<ul style="list-style-type: none"> Restricted Water Source Event Line Completed Outer Line Completed Head Line Completed Road as Line Planned Outer Line Planned Head Line Planned Road as Line 	<ul style="list-style-type: none"> Access or Improved Road Other Ready Line Temporary Flight Restriction Fire Edge Contained Line Event Polygon Wildfire Daily Fire Perimeter
---	--	---	---	---	---	---	---



Datum: NAD 1983