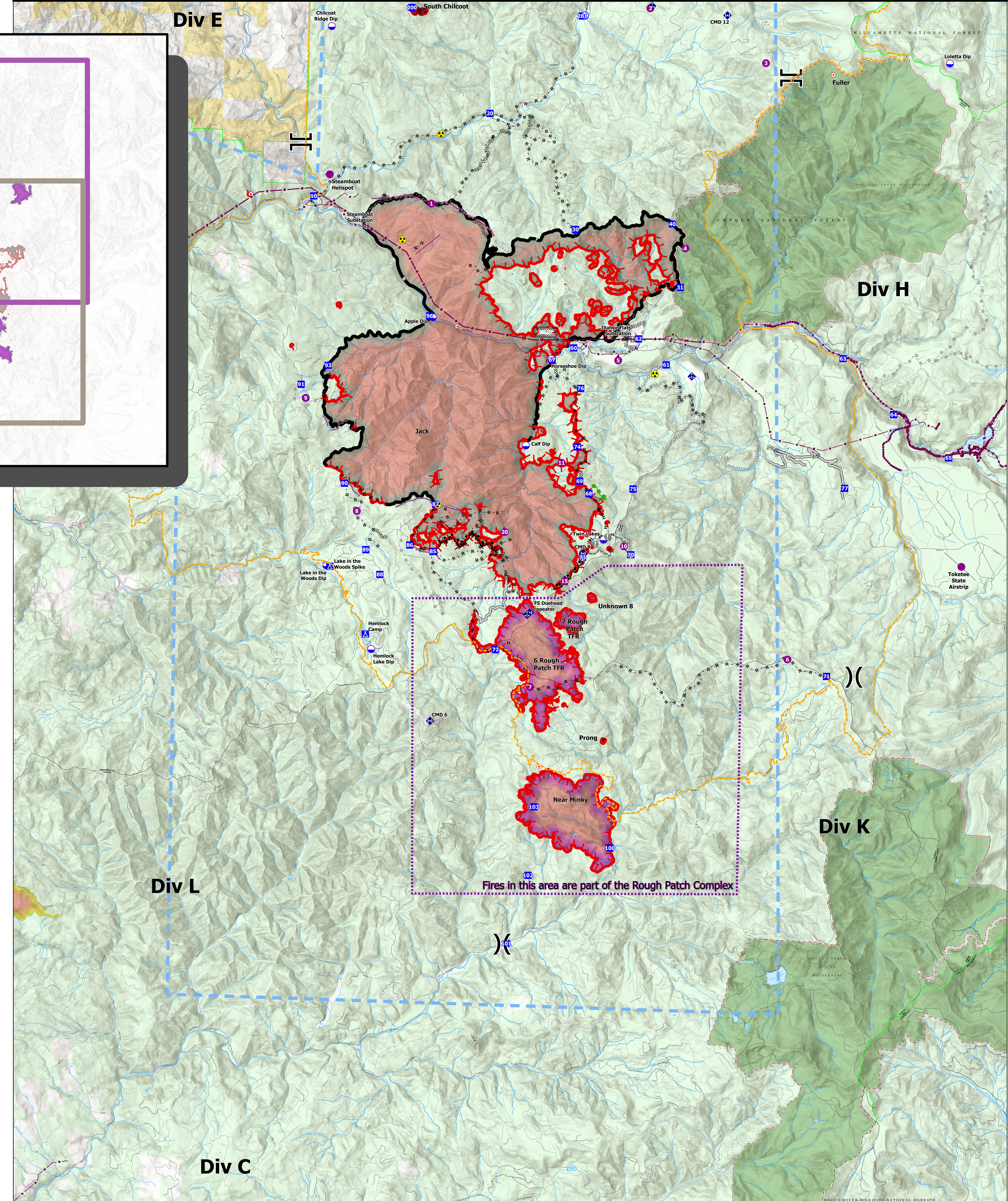
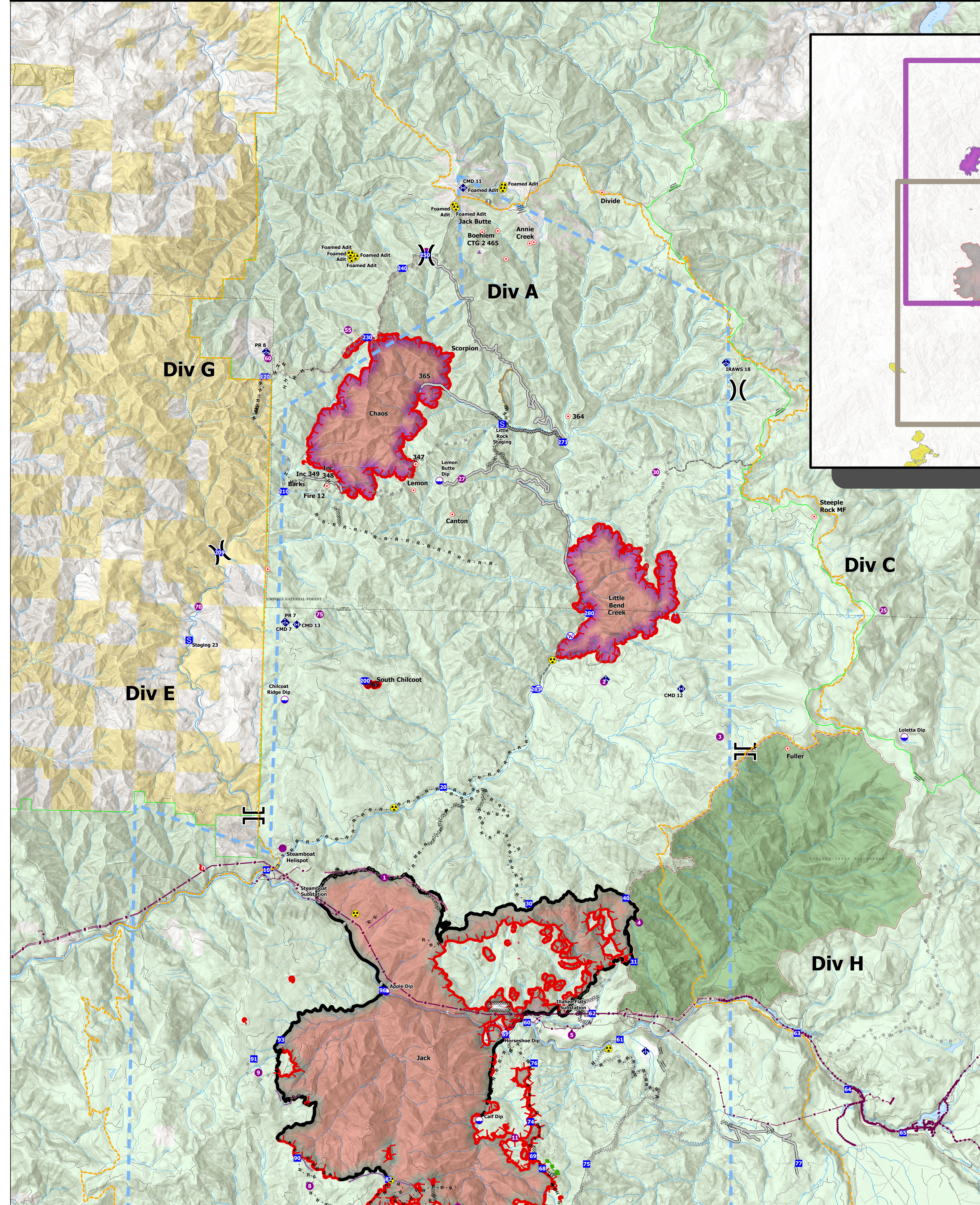


Rough Patch

OR-UPF-000373: 12,271 Ac
Branch 1

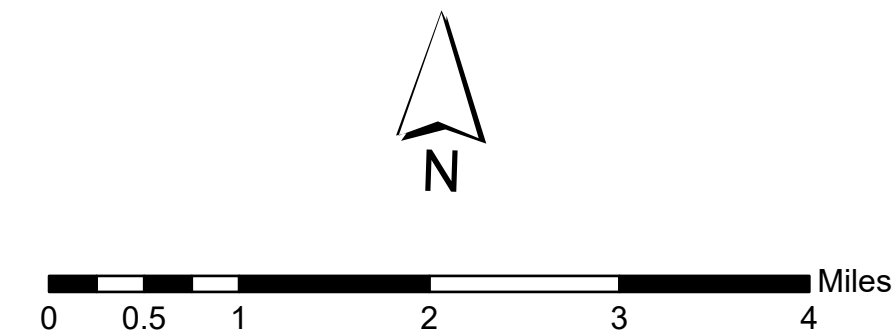
Jack

OR-UPF-000373: 23,648 Ac



Briefing Map

Jack Fire (OR-UPF-00265): 23,648 Ac
Rough Patch Complex(OR-UPF-00373): 12,271 Ac
As of 08/14/2021 @ 2123



- ClosureAreas
- UtilityPowerLines
- Administrative FS Boundary
- Proclaimed FS Boundary
- Ranger District Boundary
- Dip Site
- Hillspot
- Division Break
- Branch Break

- Drop Point
- Staging Area
- Hot Spot - Spot Fire
- Value at Risk
- Mobile Weather Unit
- Dip Site
- Hazard
- Restricted Water Source
- Completed Burnout
- Completed Dozer Line
- Completed Hand Line
- Completed Road as Line
- Planned Dozer Line
- Planned Fuel Break
- Planned Hand Line
- Planned Mixed Construction Line
- Planned Road as Line
- Access or Improved Road

- Other
- Repair Line
- Escape Route
- Foam Drop
- Retardant Drop
- Temporary Flight Restriction
- Fire Edge
- Contained Line
- Wildfire Daily Fire Perimeter, Jack Fire

- Wildfire Daily Fire Perimeter, Rough Patch Complex
- U.S. Forest Service
- Bureau of Land Management
- Other Federal Land
- Other Land, Including Private
- Wilderness