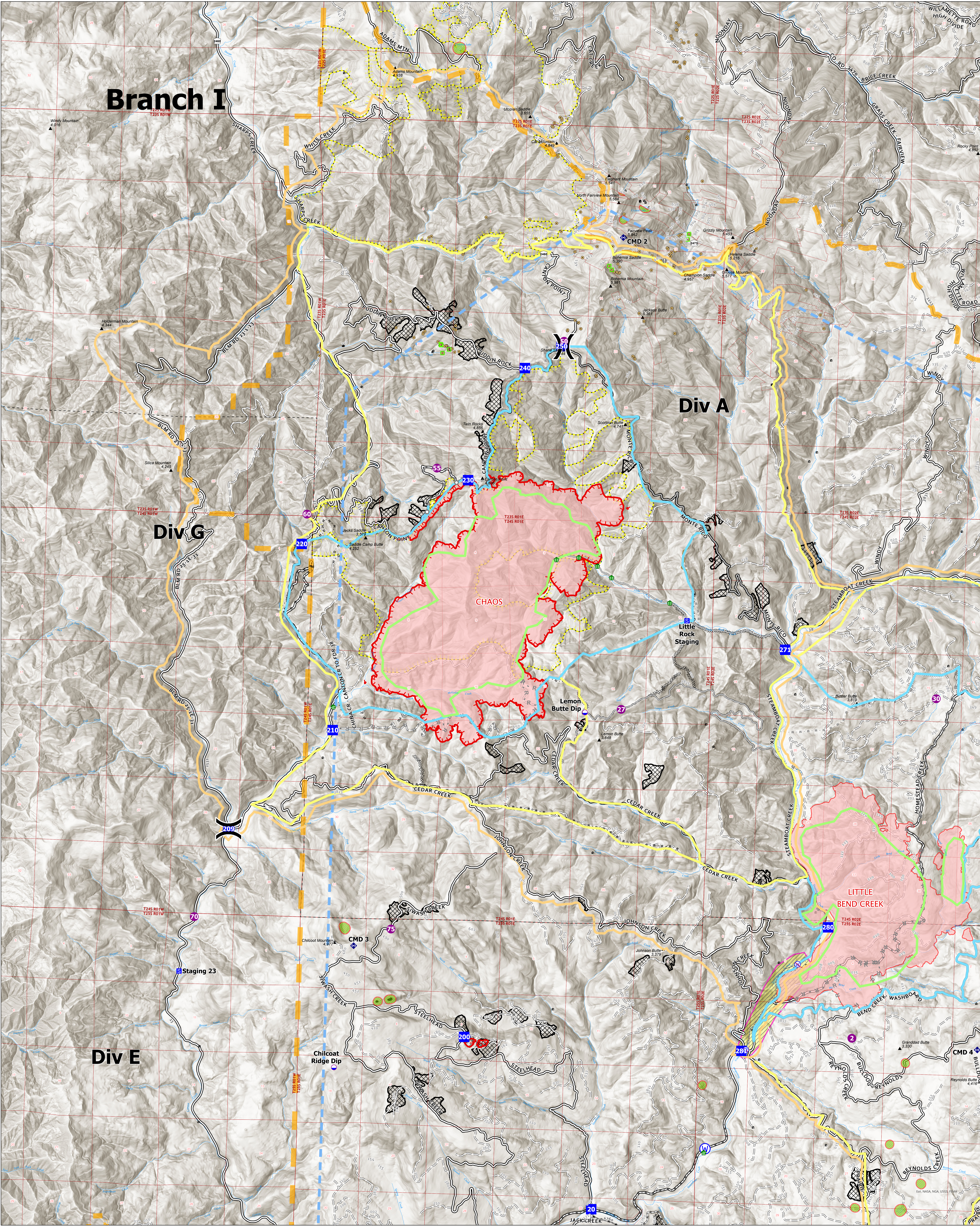


# Branch I



## Suppression Strategy

### Chaos Fire



08/16/2021 - 24 hr

0 0.25 0.5 1 1.5 2 Miles

<b>PACE Lines</b> Primary Alternate Contingency Emergency Foamed Adit Closures County Boundary Structures Umqupa NF Master Adits	<b>Aerial Fire Retardant Avoidance Areas</b> Label Point <b>Air Operations</b> Dip Site Helispot <b>Assignment Breaks</b> Division Break	<b>Logistics</b> Drop Point Staging Area <b>Reference</b> Value at Risk Landmark <b>Repair</b> Water Development or Draft Site Stream Crossing	<b>Communications</b> Repeater <b>Water</b> Water Source Restricted Water Source Area Closure <b>Ops Completed</b> Completed Dozer Line Completed Hand Line Completed Road as Line <b>Ops Planned</b> Planned Dozer Line Planned Mixed Construction Line Planned Road as Line <b>Reference</b> Access or Improved Road Other	<b>Repair</b> Repair Line <b>Air Ops</b> Temporary Flight Restriction <b>Fire Perimeter</b> Fire Edge Polygon Type Wildfire Daily Fire Perimeter	<b>Sensitive Areas</b> Area To Protect (polygon) Roadless Areas BLM Private Forest Service Land World Hillshade
--	--	--	--	---	---



GB IMT 2  
8/16/2021 1642

North American 1983 Datum, Lat/Long Grid